

# 2019 Dodge Ram 1500 Laramie Black 4X4 DUPONT KEVLAR,LIFTED,FUEL WHLS

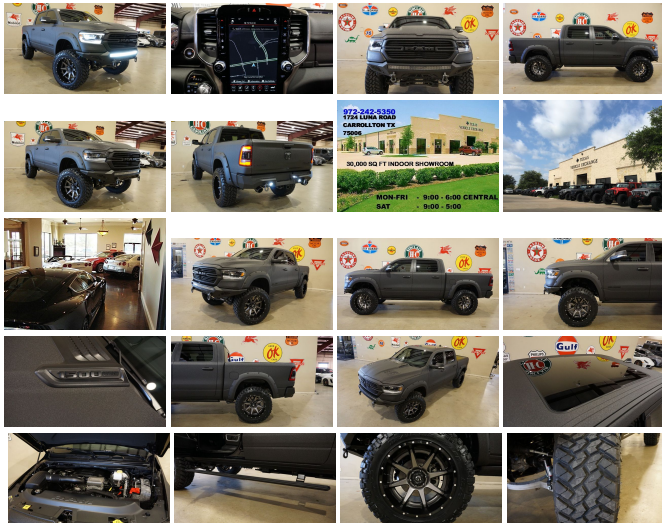
View this car on our website at [tveauto.com/6555656/ebrochure](http://tveauto.com/6555656/ebrochure)



Our Price **\$78,900**

## Specifications:

Year:	2019
VIN:	1C6SRFJT6KN610668
Make:	Dodge
Stock:	610668
Model/Trim:	Ram 1500 Laramie Black 4X4 DUPONT KEVLAR,LIFTED,FUEL WHLS
Condition:	Pre-Owned
Body:	Pickup Truck
Exterior:	Black
Engine:	ENGINE: 5.7L V8 HEMI MDS VVT ETORQUE
Interior:	Black Leather
Transmission:	TRANSMISSION: 8-SPEED AUTOMATIC (8HP75)
Mileage:	665
Drivetrain:	4 Wheel Drive
Economy:	City 17 / Highway 22



NATION WIDE FINANCING

SUBMIT CREDIT APP [WWW.TVEAUTO.COM](http://WWW.TVEAUTO.COM)

OR CALL 972-242-5350

2019 DODGE RAM 1500 CREW CAB LARAMIE BLACK 4X4, 5.7L V8 HEMI eTORQUE ENGINE, 8 SPEED AUTOMATIC TRANSMISSION, ONLY 665 MILES, RAPTOR BLACK KEVLAR COATING W/BLACK LEATHER INTERIOR, CARFAX REPORTS 1 OWNER NO ACCIDENTS, NON-SMOKER, REMOTE START, ADDICTIVE DESERT DESIGNS STEALTH FIGHTER FRONT BUMPER WITH 40" LED LIGHT BAR & WARN D-RINGS FRONT & REAR PARK DISTANCE

D-RINGS, FRONT & REAR AIR DISTANCE SENSORS, PRO COMP 6" SUSPENSION LIFT KIT, BUSHWACKER FENDER FLARES, PANORAMIC SUNROOF, 12.0" TOUCH SCREEN NAVIGATION, BACK-UP CAMERA, POWER RETRACTABLE RUNNING BOARDS, POWER WINDOWS, POWER DOOR LOCKS, POWER FOLDING HEATED MIRRORS WITH TURN SIGNALS, BLIND SPOT CONTROL, HEATED TILT/TELESCOPE STEERING WHEEL WITH AUDIO & CRUISE CONTROLS, DUAL POWER HEATED & COOLED FRONT SEATS WITH DRIVER 2 MEMORY POSITION, POWER ADJUSTABLE PEDALS, TRACTION CONTROL, TOW/HAIL BUTTON, REAR AXLE LOCK BUTTON, TRAILER BRAKE CONTROLLER, ICE COLD A/C, DUAL CLIMATE CONTROL, HARMAN/KARDON HD AM/FM/SIRIUS STEREO WITH CD PLAYER, U-CONNECT, SELF DIMMING REAR VIEW MIRROR, HOMELINK GARAGE CONTROLS, DUAL LIGHTED VANITY MIRRORS, REAR HEATED SEATS, REAR A/C VENTS, POWER SLIDING REAR WINDOW, PACE EDWARDS POWER BED COVER WITH REMOTE CONTROL, SPRAY IN BEDLINER, ADDICTIVE DESERT DESIGNS STEALTH FIGHTER REAR BUMPER WITH 2 DUALY D2 LED LIGHTS & WARN D-RINGS, TOW PACKAGE WITH RECEIVER HITCH, RUBBER FLOOR MATS, OWNER'S MANUAL, 2 KEYS/2 REMOTES. 22" FUEL "RAMPAGE" 2-PIECE WHEELS, FRONT TIRES ARE BRAND NEW NITTO TRAIL GRAPPLER 37X13.50R/22, REAR TIRES ARE BRAND NEW NITTO TRAIL GRAPPLER 37X13.50R/22. RUNS AND DRIVES GREAT. GIVE US A CALL @ 972-242-5350 OR STOP BY FOR A TEST DRIVE. 1724 LUNA RD IN CARROLLTON - 2 MILES NORTH OF 635. CLICK ON CARFAX ICON TO VIEW A FULL REPORT AT NO COST TO YOU.

## Vehicle History Report : as Of 10/22/2019

 Snapshot

2019 RAM LARAMIE

	No accidents reported to CARFAX
	No damage reported to CARFAX
	CARFAX 1-Owner vehicle
	At least 1 open recall
	Well maintained vehicle
	665 Last reported odometer reading

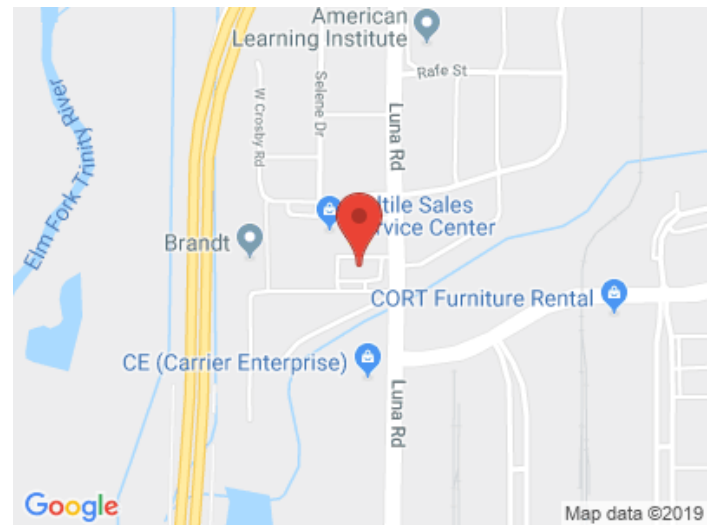


**FREE CARFAX Report**

See the full CARFAX Report for additional information

\*carfax Snapshot is a reflection of available information on the date the report was pulled. carfax is constantly being updated with new information and is subject to change at any time.

## Our Location :



2019 Dodge Ram 1500 Laramie Black 4X4 DUPONT KEVLAR,LIFTED,FUEL WHLS

Texas Vehicle Exchange - 972-242-5350 - View this car on our website at [veauto.com/6555656/ebrochure](http://veauto.com/6555656/ebrochure)

## Installed Options

### Interior

- #1 Seat Foam Cushion- 1 12V DC Power Outlet
- 1 12V DC Power Outlet and 2 AC Power Outlets - 3 Rear Seat Head Restraints
- 4 Way Front Headrests
- 60-40 Folding Split-Bench Front Facing Fold-Up Cushion Vinyl Rear Seat
- 8-Way Power Driver Seat -inc: Power Recline, Height Adjustment, Fore/Aft Movement and Cushion Tilt
- 8.4" Touchscreen Display- Analog Display- Apple CarPlay- Compass
- Cruise Control w/Steering Wheel Controls- Day-Night Auto-Dimming Rearview Mirror
- Delayed Accessory Power
- Driver And Passenger Visor Vanity Mirrors w/Driver And Passenger Illumination
- Driver Seat Memory- Dual Zone Front Automatic Air Conditioning w/Front Infrared
- FOB Controls -inc: Remote Engine Start- Fade-To-Off Interior Lighting
- Front Center Armrest w/Storage and Rear Center Armrest- Front Map Lights
- Front Seat Back Map Pockets
- Full Carpet Floor Covering -inc: Carpet Front And Rear Floor Mats - Full Cloth Headliner
- GPS Antenna Input- Garage Door Transmitter
- Gauges -inc: Speedometer, Odometer, Voltmeter, Oil Pressure, Engine Coolant Temp, Tachometer, Oil Temperature, Transmission Fluid Temp, Engine Hour Meter, Trip Odometer and Trip Computer
- Google Android Auto- HVAC -inc: Underseat Ducts and Console Ducts
- Heated Front Seats- Heated Steering Wheel- Illuminated Front Cupholder
- Illuminated Locking Glove Box
- Instrument Panel Bin, Dashboard Storage, RamBin Interior Concealed Storage, Driver / Passenger And Rear Door Bins and 1st Row Underseat Storage
- Interior Trim -inc: Deluxe Sound Insulation, Simulated Wood/Metal-Look Instrument Panel Insert, Simulated Wood/Metal-Look Door Panel Insert, Chrome/Metal-Look Interior Accents and Metal-Look Overhead Console Insert
- Leather Steering Wheel- Leather Trim 40/20/40 Bench Seat
- Manual Tilt/Telescoping Steering Column

- Memory Settings -inc: Door Mirrors, Audio and Pedals- Metal-Look Gear Shift Knob
- Mini Overhead Console, 1 12V DC Power Outlet and 2 AC Power Outlets
- Outside Temp Gauge- Passenger Seat- Perimeter Alarm- Pickup Cargo Box Lights
- Power 1st Row Windows w/Driver And Passenger 1-Touch Up/Down
- Power 4-Way Driver Lumbar Adjust- Power 4-Way Passenger Lumbar Adjust
- Power 8-Way Driver & Passenger Seats- Power Adjustable Pedals
- Power Door Locks w/Autolock Feature- Power Rear Windows
- Proximity Key For Doors And Push Button Start - RamBin Cargo Area Concealed Storage
- Rear Cupholder- Redundant Digital Speedometer
- Remote Keyless Entry w/Integrated Key Transmitter, Illuminated Entry and Panic Button
- Seats w/Leatherette Back Material- Sentry Key Engine Immobilizer- Systems Monitor
- Trip Computer- Uconnect Access Mobile Hotspot Internet Access- Valet Function
- Ventilated Front Seats- Vinyl Door Trim Insert- Voice Recorder

---

## Exterior

- Black Side Windows Trim- Body-Colored Fender Flares
- Cargo Lamp w/High Mount Stop Light- Chrome Door Handles
- Chrome Front Bumper w/Chrome Rub Strip/Fascia Accent- Chrome Grille
- Chrome Power w/Tilt Down Heated Side Mirrors w/Driver Auto Dimming, Power Folding and Turn Signal Indicator
- Chrome Rear Step Bumper- Clearcoat Paint- Deep Tinted Glass- Front Fog Lamps
- Front License Plate Bracket- Full-Size Spare Tire Stored Underbody w/Crankdown
- Fully Automatic Aero-Composite Led Low/High Beam Daytime Running Headlamps w/Delay-Off
- Galvanized Steel/Aluminum Panels- LED Brakelights- Laminated Glass
- Perimeter/Approach Lights- Power Rear Window w/Defroster- Regular Box Style
- Steel Spare Wheel- Tailgate Rear Cargo Access
- Tailgate/Rear Door Lock Included w/Power Door Locks
- Tires: 275/65R18 BSW All Season LRR- Variable Intermittent Wipers
- Wheels: 18" x 8" Aluminum Base Painted

---

## Safety

- #1 Seat Foam Cushion- 1 12V DC Power Outlet
- 1 12V DC Power Outlet and 2 AC Power Outlets - 3 Rear Seat Head Restraints
- 4 Way Front Headrests
- 60-40 Folding Split-Bench Front Facing Fold-Up Cushion Vinyl Rear Seat
- 8-Way Power Driver Seat -inc: Power Recline, Height Adjustment, Fore/Aft Movement and Cushion Tilt
- 8.4" Touchscreen Display- Analog Display- Apple CarPlay- Compass
- Cruise Control w/Steering Wheel Controls- Day-Night Auto-Dimming Rearview Mirror
- Delayed Accessory Power
- Driver And Passenger Visor Vanity Mirrors w/Driver And Passenger Illumination
- Driver Seat Memory- Dual Zone Front Automatic Air Conditioning w/Front Infrared
- FOB Controls -inc: Remote Engine Start- Fade-To-Off Interior Lighting
- Front Center Armrest w/Storage and Rear Center Armrest- Front Map Lights
- Front Seat Back Map Pockets
- Full Carpet Floor Covering -inc: Carpet Front And Rear Floor Mats - Full Cloth Headliner
- GPS Antenna Input- Garage Door Transmitter
- Gauges -inc: Speedometer, Odometer, Voltmeter, Oil Pressure, Engine Coolant Temp, Tachometer, Oil Temperature, Transmission Fluid Temp, Engine Hour Meter, Trip Odometer and Trip Computer
- Google Android Auto- HVAC -inc: Underseat Ducts and Console Ducts
- Heated Front Seats- Heated Steering Wheel- Illuminated Front Cupholder
- Illuminated Locking Glove Box
- Instrument Panel Bin, Dashboard Storage, RamBin Interior Concealed Storage, Driver / Passenger And Rear Door Bins and 1st Row Underseat Storage
- Interior Trim -inc: Deluxe Sound Insulation, Simulated Wood/Metal-Look Instrument Panel Insert, Simulated Wood/Metal-Look Door Panel Insert, Chrome/Metal-Look Interior Accents and Metal-Look Overhead Console Insert
- Leather Steering Wheel- Leather Trim 40/20/40 Bench Seat
- Manual Tilt/Telescoping Steering Column
- Memory Settings -inc: Door Mirrors, Audio and Pedals- Metal-Look Gear Shift Knob
- Mini Overhead Console, 1 12V DC Power Outlet and 2 AC Power Outlets
- Outside Temp Gauge- Passenger Seat- Perimeter Alarm- Pickup Cargo Box Lights
- Power 1st Row Windows w/Driver And Passenger 1-Touch Up/Down
- Power 4-Way Driver Lumbar Adjust- Power 4-Way Passenger Lumbar Adjust
- Power 8-Way Driver & Passenger Seats- Power Adjustable Pedals
- Power Door Locks w/Autolock Feature- Power Rear Windows
- Proximity Key For Doors And Push Button Start - RamBin Cargo Area Concealed Storage
- Rear Cupholder- Redundant Digital Speedometer
- Remote Keyless Entry w/Integrated Key Transmitter, Illuminated Entry and Panic Button
- Seats w/Leatherette Back Material- Sentry Key Engine Immobilizer- Systems Monitor

- Seats w/Leatherette Dash material- Chevy Key Engine Immobilizer- Systems Monitor
- Trip Computer- Uconnect Access Mobile Hotspot Internet Access- Valet Function
- Ventilated Front Seats- Vinyl Door Trim Insert- Voice Recorder

## Mechanical

- 1670# Maximum Payload- 26 Gal. Fuel Tank- 3.21 Rear Axle Ratio
- 48V Belt Starter Generator- 50 State Emissions- 730CCA Maintenance-Free Battery
- Auto Locking Hubs
- Class IV Towing Equipment -inc: Harness, Hitch and Trailer Sway Control
- Electric Power-Assist Steering- Electronic Transfer Case- Engine Auto Stop-Start Feature
- Engine Oil Cooler- Engine: 3.6L V6 24V VVT eTorque UPG I
- Front And Rear Anti-Roll Bars- GVWR: 6,900 lbs- HD Shock Absorbers
- Lithium Ion Traction Battery- Multi-Link Rear Suspension w/Coil Springs
- Part And Full-Time Four-Wheel Drive
- Quasi-Dual Stainless Steel Exhaust w/Chrome Tailpipe Finisher
- Regenerative 4-Wheel Disc Brakes w/4-Wheel ABS, Front Vented Discs, Brake Assist, Hill Hold Control and Electric Parking Brake
- Short And Long Arm Front Suspension w/Coil Springs
- Transmission w/Driver Selectable Mode and Sequential Shift Control w/Steering Wheel Controls
- Transmission: 8-Speed Automatic (850RE)

## Option Packages

### Factory Installed Packages

#### ENGINE: 5.7L V8 HEMI MDS VVT

##### ETORQUE

- inc: 23 Gallon Fuel Tank, Hemi Badge, Dual Rear Exhaust w/Bright Tips, GVWR: 7,100 lbs, 18" Aluminum Spare Wheel, Heavy Duty Engine Cooling, Active Noise Control System

\$2,645

#### TRANSMISSION: 8-SPEED AUTOMATIC (8HP75)

#### 33 GALLON FUEL TANK

\$445

#### BLACK APPEARANCE PACKAGE

- inc: Body Color Door Handles, Grille B/Color Outline 3 Texture 4, Black Headlamp Bezels, Sport Performance Hood, Dual Exhaust w/Black Tips, Wheels: 22" x 9" Polished Painted, Tires: 285/45R22XL BSW All Season, Body Color Rear Bumper w/Step Pads, Black Exterior Truck Badging, Black Interior Accents, Body Color Front Bumper, Power Heated Fold-Away Mirrors

\$3,395

#### DUAL-PANE PANORAMIC SUNROOF

- inc: LED Dome/Reading Lamp, Dome Dual LED Reading Lamp

\$1,495

#### E-LOCKER REAR AXLE

\$545

#### FRONT & REAR RUBBER FLOOR MATS

\$135

#### LARAMIE LEVEL 2 EQUIPMENT GROUP

- inc: Foam Bottle Insert (Door Trim Panel), Rear 60/40 Folding Split Recline Seat, ParkSense Front/Rear Park Assist w/Stop, Auto Park Brake, Headlamp

\$4,595

Auto High Beam Headlamp  
Control, Rain Sensitive  
Windshield Wipers, Radio:  
Uconnect 4C Nav w/8.4"  
Display, SiriusXM Travel Link,  
5-Year SiriusXM Travel Link  
Service, Disassociated  
Touchscreen Display, 5-Year  
SiriusXM Traffic Service, 1-YR  
SiriusXM Guardian Trial, HD  
Radio, SiriusXM Traffic Plus,  
For Details, Visit  
DriveUconnect.com, GPS  
Navigation, No Satellite  
Coverage w/Hi/AK/PR/VI/GU,  
Wireless Charging Pad, Heated  
Second Row Seats, Remote  
Tailgate Release, Rear  
Underseat Compartment  
Storage, Tailgate Ajar Warning  
Lamp, harman/kardon 19  
Speaker Premium Sound,  
Single Disc Remote CD Player,  
Blind Spot & Cross Path  
Detection

---

**POWER RUNNING BOARDS**  
\$995

---

**PROTECTION GROUP** \$395  
-inc: Fuel Tank Skid Plate,  
Transfer Case Skid Plate,  
Front Suspension Skid Plate,  
Tow Hooks, Steering Gear  
Skid Plate

---

**RADIO: UCONNECT 12 W/NAVIGATION** \$1,995  
-inc: SiriusXM Travel Link, USB  
Host Flip, 5-Year SiriusXM  
Travel Link Service,  
Disassociated Touchscreen  
Display, 5-Year SiriusXM  
Traffic Service, 1-YR SiriusXM  
Guardian Trial, HD Radio,  
SiriusXM Traffic Plus, For  
Details, Visit  
DriveUconnect.com, 12"  
Touchscreen Display, GPS  
Navigation, No Satellite  
Coverage w/Hi/AK/PR/VI/GU,  
SiriusXM w/360L

---

**TRAILER BRAKE CONTROL**  
\$295

---

**3.92 REAR AXLE RATIO**  
\$95

---

**BLACK, LEATHER TRIMMED BUCKET  
SEATS** \$1,295  
-inc: Rear 60/40 Folding Split  
Recline Seat, Full Length  
Upgraded Floor Console,  
Bucket Seats, Center Console  
Parts Module

---

**Option Packages Total**  
\$18,325

Texas Vehicle Exchange

[tveauto.com](http://tveauto.com)

972-242-5350

1724 Luna Road

Carrollton, TX 75006

© 2019 AutoRevo - All rights reserved. - Powered by AutoRevo