



## 2013 Subaru Legacy 2.5i Premium

**Steve Tanney 914-636-4439**

**Our Price \$9,995**

View this vehicle on our website at [us1autony.com](http://us1autony.com)

U.S. 1 Auto Sales

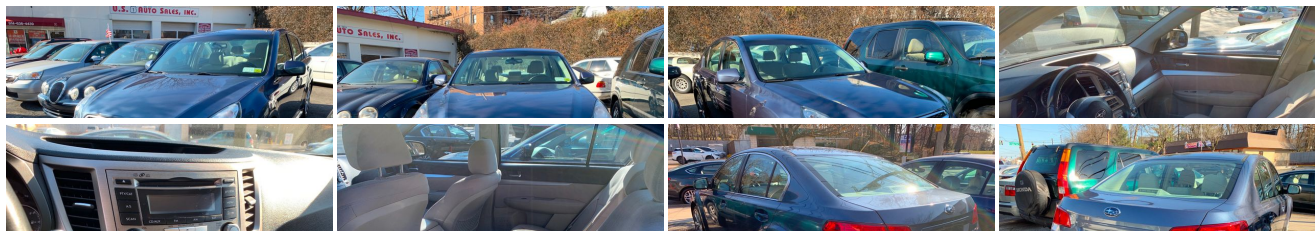
[914-636-4439](tel:914-636-4439)

109 E Main St, New Rochelle, NY 10801

[Photos](#)

[Details](#)

[Contact](#)



### Specifications:

<b>Year:</b>	2013
<b>VIN:</b>	<a href="#">4S3BMBC63D3048833</a>
<b>Make:</b>	Subaru
<b>Model/Trim:</b>	Legacy 2.5i Premium
<b>Condition:</b>	Pre-Owned

Body:	Sedan
Exterior:	Blue
Engine:	2.5L DOHC SMPI 16-valve 4-cyl boxer engine -inc: active valve control system (AVCS) variable valve timing, chain-driven camshafts w/auto chain tensioners, tumble generator valves
Interior:	Tan Cloth
Mileage:	105,248
Drivetrain:	All Wheel Drive
Economy:	City 24 / Highway 32

## Vehicle Description

### Installed Options

#### Interior

- (2) 12V aux pwr outlets -inc: dash, center console
- Carpeted floor mats -inc: driver mat retention hook- Cloth upholstery- Pwr door locks
- Remote keyless entry -inc: answer back chirp- Security system
- Steering wheel-mounted audio & Bluetooth controls
- 10-way pwr driver seat w/pwr lumbar support- Air filtration system
- Anti-theft engine immobilizer- Black door sill covers- Chrome interior door handles
- Cruise control
- Cup holders -inc: (2) center console, (2) rear seat armrest, front & rear door trim panels
- Dual illuminated visor vanity mirrors
- Front bucket seats -inc: whiplash protection, height-adjustable head restraints, height-adjustable driver seat
- Front door courtesy lights- Front passenger seatback pocket
- Illuminated ignition switch ring
- Illuminated overhead console -inc: dual front map lights, sunglasses holder
- Leather-wrapped shifter Leather-wrapped steering wheel Manual air conditioning
- Multi-function display -inc: ECO gauge, average fuel economy, outside temp
- Off-delay dome light
- Pwr windows -inc: driver-side auto-up/down, anti-pinch protection, illuminated switches all doors
- Rear 65/35 split fold-down bench seat -inc: armrest, head restraints at all (3) seating positions
- Rear window defroster- Tilt/telescopic steering column- Trunk area grocery bag hooks

#### Exterior

- 17" silver finish alloy wheels
- Auto-on/off headlights -inc: ignition switch auto-off, black inner bezels
- Body color exterior door handles- Body color front & rear bumpers
- Body color manual-folding pwr mirrors- Body color rocker spoiler
- Dark upper windshield sunshade band- P215/50R17 all-season tires
- T135/80R16 spare tire- Variable intermittent windshield wipers w/washer

#### Safety

- (2) 12V aux pwr outlets -inc: dash, center console
- Carpeted floor mats -inc: driver mat retention hook- Cloth upholstery- Pwr door locks
- Remote keyless entry -inc: answer back chirp- Security system
- Steering wheel-mounted audio & Bluetooth controls
- 10-way pwr driver seat w/pwr lumbar support- Air filtration system
- Anti-theft engine immobilizer- Black door sill covers- Chrome interior door handles
- Cruise control
- Cup holders -inc: (2) center console, (2) rear seat armrest, front & rear door trim panels
- Dual illuminated visor vanity mirrors
- Front bucket seats -inc: whiplash protection, height-adjustable head restraints, height-adjustable driver seat
- Front door courtesy lights- Front passenger seatback pocket
- Illuminated ignition switch ring
- Illuminated overhead console -inc: dual front map lights, sunglasses holder
- Leather-wrapped shifter Leather-wrapped steering wheel Manual air conditioning
- Multi-function display -inc: ECO gauge, average fuel economy, outside temp
- Off-delay dome light

Pwr windows -inc: driver-side auto-up/down, anti-pinch protection, illuminated switches all

- Pwr windows -inc: driver-side auto-up/down, anti-pinch protection, illuminated switches all doors
- Rear 65/35 split fold-down bench seat -inc: armrest, head restraints at all (3) seating positions
- Rear window defroster- Tilt/telescopic steering column- Trunk area grocery bag hooks

## Mechanical

- 2.5L DOHC SMPI 16-valve 4-cyl boxer engine -inc: active valve control system (AVCS) variable valve timing, chain-driven camshafts w/auto chain tensioners, tumble generator valves
- Direct ignition system- Double wishbone rear suspension -inc: anti-lift geometry
- Electronic throttle control (ETC)- Front & rear stabilizer bars- Hill Holder
- Lineartronic continuously variable transmission (CVT) -inc: steering wheel-mounted paddle-shifters, 6-speed manual mode function
- MacPherson strut front suspension -inc: anti-dive geometry
- Quick ratio pwr assisted steering- Single-outlet stainless steel exhaust tip
- Symmetrical all-wheel drive- Tool kit -inc: lug wrench, 2-way screwdriver
- Ventilated front/solid rear disc brakes

U.S. 1 Auto Sales

U.S. 1 Auto Sales

View this car on our website at [us1autony.com/6552691](https://us1autony.com/6552691)

Website: [us1autony.com](https://us1autony.com)

Phone: [914-636-4439](tel:914-636-4439)

Map: [109 E Main St, New Rochelle, NY 10801](#)

