



2002 Pontiac Firebird Trans Am

Our Price \$19,998

View this vehicle on our website at lakesidemotorco.com

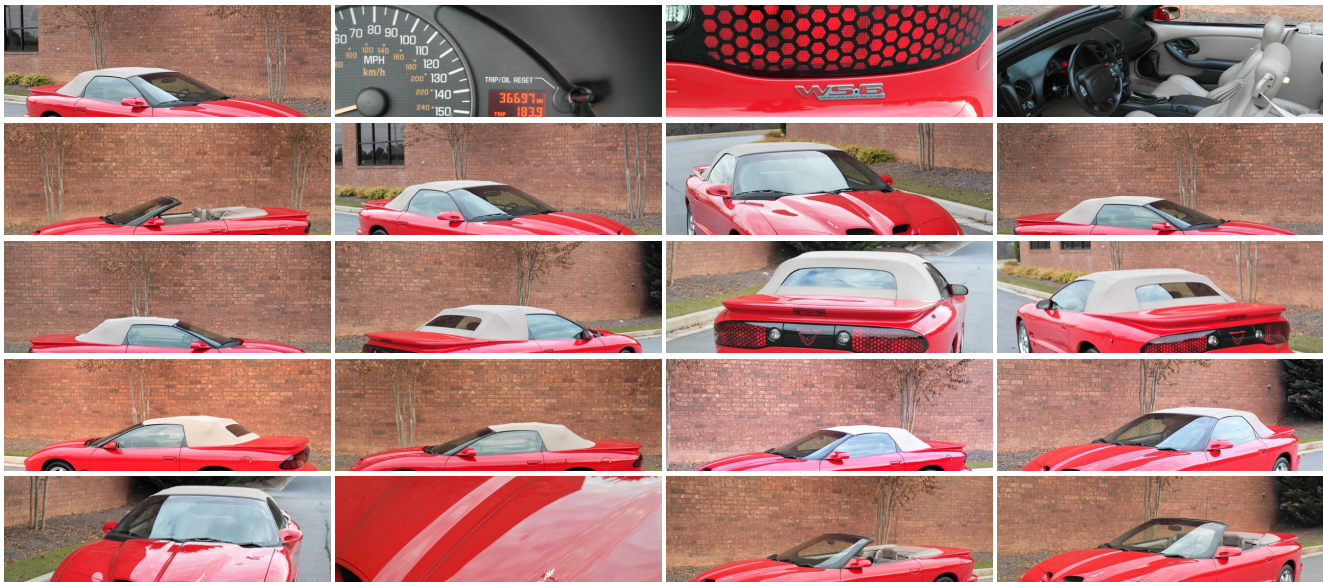
7703164300

4050 Enterprise Way, Ste 100 , Flowery Branch, GA 30542

Photos

Details

Contact



Specifications:

Year:	2002
VIN:	2G2FV32G822162309
Make:	Pontiac
Model/Trim:	Firebird Trans Am
Condition:	Pre-Owned
Body:	Convertible
Exterior:	Bright Red
Engine:	5.7L (346) SFI V8 ENGINE
Interior:	Camel Leather
Transmission:	4-SPEED AUTOMATIC TRANSMISSION W/OD
Mileage:	36,677
Drivetrain:	Rear Wheel Drive
Economy:	City 18 / Highway 26

Vehicle Description

ALL VEHICLES SHOWN BY APPOINTMENT All Original Trans AM WS6!. No Accident History! Extremely clean in Show condition! 36k Actual & Original Miles!! All features and functions work exactly as they should! For over 80+ photos and complimentary AutoCheck vehicle history report please visit Lakesidemotorco.com

Lakeside Motor Company has extensive experience offering ONLY the highest quality pre-owned vehicles without the traditional games of the big dealers! We are straight forward and transparent from the first conversation. We won't waste your time. Check out Lakesidemotorco.com on Google to see what our previous customer are saying about us!

Installed Options

Interior

- Automatic pwr door locks-inc: retained accessory pwr- Carpeted front/rear floor mats
- Protection Group-inc: theft deterrent system, remote keyless entry
- 6-way pwr driver seat- Air conditioning- Cruise control
- Day/night rearview mirror w/reading lamps- Dual covered visor vanity mirrors
- ETR AM/FM stereo w/CD player-inc: graphic equalizer, touch control, seek & scan, clock, search/replay, Theftlock, Monsoon 500-watt amplifier, (8) speakers, leather-wrapped steering wheel w/radio controls
- Front door map pockets
- Full-length front console w/dual cupholders, auxiliary pwr outlet, storage box
- Fully carpeted luggage compartment
- Instrumentation-inc: analog speedometer, tachometer, odometer, trip odometer, voltmeter, fuel/coolant temp/oil pressure gauges
- Prado leather reclining front bucket seats- Pwr antenna- Pwr windows
- Rear window defogger- Remote decklid release- Tilt steering column

Exterior

- Composite body panels-inc: doors, fenders, fascias, rear spoiler
- Daytime running lamps- Rear decklid spoiler- Body-color body-side moldings
- Body-color soft fascia-type bumpers- Concealed quartz halogen headlamps
- Controlled-cycle windshield wipers- Convertible soft top- Dual pwr sport mirrors
- Fog lamps- Solar-Ray tinted glass

Safety

- Automatic pwr door locks-inc: retained accessory pwr- Carpeted front/rear floor mats
- Protection Group-inc: theft deterrent system, remote keyless entry
- 6-way pwr driver seat- Air conditioning- Cruise control
- Day/night rearview mirror w/reading lamps- Dual covered visor vanity mirrors
- ETR AM/FM stereo w/CD player-inc: graphic equalizer, touch control, seek & scan, clock, search/replay, Theftlock, Monsoon 500-watt amplifier, (8) speakers, leather-wrapped steering wheel w/radio controls
- Front door map pockets
- Full-length front console w/dual cupholders, auxiliary pwr outlet, storage box
- Fully carpeted luggage compartment
- Instrumentation-inc: analog speedometer, tachometer, odometer, trip odometer, voltmeter, fuel/coolant temp/oil pressure gauges
- Prado leather reclining front bucket seats- Pwr antenna- Pwr windows
- Rear window defogger- Remote decklid release- Tilt steering column

Mechanical

- 4-wheel anti-lock braking system (ABS)- 16" silver 5-spoke cast aluminum wheels
- 16.8 gallon fuel tank- 4-speed automatic transmission w/OD- 5.7L (346) SFI V8 engine
- Brake/transmission shift interlock- Compact spare tire- Delco Freedom II battery
- Front/rear gas-charged shocks- Front/rear stabilizer bar
- Independent short/long arm front suspension- P245/50ZR16 all-weather SBR BSW tires
- Pwr front/rear vented disc brakes- Pwr rack & pinion steering- Pwr steering cooler
- Rear suspension w/torque arm, trailing arm, track bar- Rear wheel drive
- Stainless steel exhaust system

Option Packages

Factory Installed Packages

5.7L (346) SFI V8 ENGINE

4-SPEED AUTOMATIC TRANSMISSION W/OD

3.23 PERFORMANCE REAR AXLE RATIO

\$300

RAM AIR PERFORMANCE & HANDLING PKG

-inc: Ram Air induction system, functional air scoops, P275/40ZR17 tires, 17" high-polished aluminum wheels, specific tuned suspension, specific low-restriction dual outlet exhaust tips, 320 horsepower, pwr steering cooler

\$3,290

TRACTION CONTROL

\$450

ETR AM/FM STEREO W/CD PLAYER

-inc: graphic equalizer, touch control, seek & scan, clock, search/replay, Theftlock, Monsoon 500-watt amplifier, (8) speakers, leather-wrapped steering wheel w/radio controls

PRADO LEATHER SEAT TRIM

RECLINING FRONT BUCKET SEATS

P275/40ZR17 SBR TIRES

17" POLISHED CAST ALUMINUM WHEELS

Option Packages Total

\$4,040

Lakeside Motor Company, LLC

Lakeside Motor Company, LLC

View this car on our website at lakesidemotorco.com/6551932

Website: lakesidemotorco.com

Phone: 7703164300

Map: [4050 Enterprise Way, Ste 100, Flowery Branch, GA 30542](#)

