

2016 Nissan Versa S

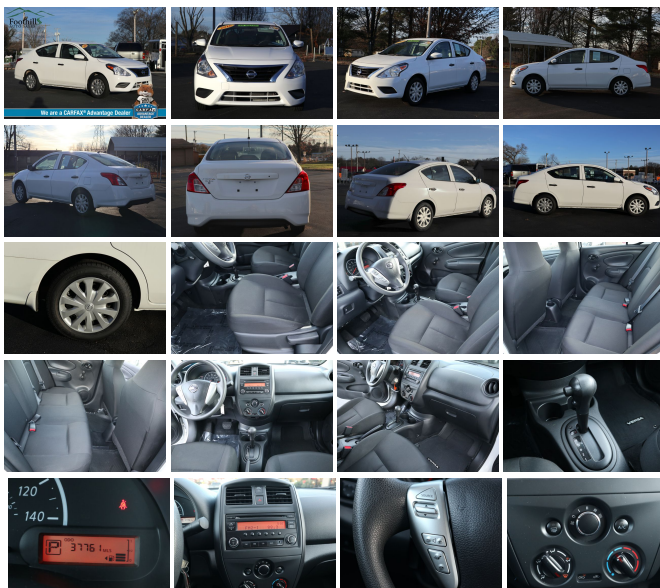
View this car on our website at foothillsautosalestn.com/6549094/ebrochure



Our Price **\$8,990**

Specifications:

Year:	2016
VIN:	3N1CN7AP4GL910821
Make:	Nissan
Model/Trim:	Versa S
Condition:	Pre-Owned
Body:	Sedan
Exterior:	Fresh Powder
Engine:	Engine: 1.6L DOHC 16 Valve 4-Cylinder
Interior:	Black Cloth
Mileage:	33,720
Drivetrain:	Front Wheel Drive
Economy:	City 26 / Highway 35









2016 Nissan Versa S


Foothills Auto Sales - 865-980-8500 - View this car on our website at foothillsautosalestn.com/6549094/ebrochure

Vehicle History Report : as Of 12/12/2018

CARFAX Snapshot

2016 NISSAN VERSA S/S PLUS/SV/SL

	Accident reported
	2 Previous owners
	15 Service history records
	Personal vehicle
	Last owned in Tennessee
	37,707 Last reported odometer reading



FREE CARFAX Report

See the full CARFAX Report for additional information

*carfax Snapshot is a reflection of available information on the date the report was pulled. carfax is constantly being updated with new information and is subject to change at any time.

Our Location :



2016 Nissan Versa S

Foothills Auto Sales - 865-980-8500 - View this car on our website at foothillsautosalestn.com/6549094/ebrochure

Installed Options

Interior

- 1 12V DC Power Outlet- 4-Way Driver Seat -inc: Manual Recline and Fore/Aft Movement
- 4-Way Passenger Seat -inc: Manual Recline and Fore/Aft Movement
- Adjustable Front Bucket Seats -inc: 4-way manual driver's seat
- Bench Front Facing Rear Seat - Cargo Space Lights- Carpet Floor Trim- Cloth Seat Trim
- Day-Night Rearview Mirror- Delayed Accessory Power- Digital/Analog Display
- Driver And Passenger Door Bins- Driver Foot Rest- Fade-To-Off Interior Lighting
- Fixed Front Head Restraints and Manual Adjustable Rear Head Restraints
- Front Cupholder- Full Board Headliner- Full Carpet Floor Covering
- Full Floor Console w/Storage and 1 12V DC Power Outlet
- Gauges -inc: Speedometer, Odometer, Tachometer, Trip Odometer and Trip Computer
- Glove Box
- Interior Trim -inc: Metal-Look Instrument Panel Insert and Metal-Look Interior Accents
- Manual 1st Row Windows- Manual Air Conditioning- Manual Rear Windows
- Manual Tilt Steering Column
- Passenger Visor Vanity Mirror w/Driver And Passenger Auxiliary Mirror - Rear Cupholder
- Remote Releases -Inc: Mechanical Cargo Access and Mechanical Fuel
- Seats w/Cloth Back Material- Trip Computer- Urethane Gear Shift Knob

Exterior

- Aero-Composite Halogen Headlamps- Black Door Handles
- Black Grille w/Chrome Surround
- Black Side Windows Trim and Black Front Windshield Trim - Body-Colored Front Bumper
- Body-Colored Power Side Mirrors w/Manual Folding- Body-Colored Rear Bumper
- Clearcoat Paint- Compact Spare Tire Mounted Inside Under Cargo- Fixed Interval Wipers
- Fixed Rear Window w/Defroster- Fully Galvanized Steel Panels- Light Tinted Glass
- Steel Spare Wheel- Tires: P185/65R15 AS -inc: Low rolling- Trunk Rear Cargo Access
- Wheels: 15" Steel w/Full Wheel Covers

Safety

- 1 12V DC Power Outlet- 4-Way Driver Seat -inc: Manual Recline and Fore/Aft Movement
- 4-Way Passenger Seat -inc: Manual Recline and Fore/Aft Movement
- Adjustable Front Bucket Seats -inc: 4-way manual driver's seat
- Bench Front Facing Rear Seat - Cargo Space Lights- Carpet Floor Trim- Cloth Seat Trim
- Day-Night Rearview Mirror- Delayed Accessory Power- Digital/Analog Display
- Driver And Passenger Door Bins- Driver Foot Rest- Fade-To-Off Interior Lighting
- Fixed Front Head Restraints and Manual Adjustable Rear Head Restraints
- Front Cupholder- Full Board Headliner- Full Carpet Floor Covering
- Full Floor Console w/Storage and 1 12V DC Power Outlet
- Gauges -inc: Speedometer, Odometer, Tachometer, Trip Odometer and Trip Computer
- Glove Box
- Interior Trim -inc: Metal-Look Instrument Panel Insert and Metal-Look Interior Accents
- Manual 1st Row Windows- Manual Air Conditioning- Manual Rear Windows
- Manual Tilt Steering Column
- Passenger Visor Vanity Mirror w/Driver And Passenger Auxiliary Mirror - Rear Cupholder
- Remote Releases -Inc: Mechanical Cargo Access and Mechanical Fuel
- Seats w/Cloth Back Material- Trip Computer- Urethane Gear Shift Knob

Mechanical

- 10.8 Gal. Fuel Tank- 110 Amp Alternator
- 47-Amp/Hr 470CCA Maintenance-Free Battery w/Run Down Protection
- Electric Power-Assist Speed-Sensing Steering- Engine: 1.6L DOHC 16 Valve 4-Cylinder
- Front And Rear Anti-Roll Bars
- Front Disc/Rear Drum Brakes w/4-Wheel ABS, Front Vented Discs and Brake Assist
- Front-Wheel Drive- Gas-Pressurized Shock Absorbers- Single Stainless Steel Exhaust
- Strut Front Suspension w/Coil Springs- Torsion Beam Rear Suspension w/Coil Springs
- Transmission: 4-Speed Automatic

All vehicles are pre-owned. The e-Price is a cash price and excludes tax, title, license and \$50.00 doc fee. Prices subject to change. Contact our Sales Team for detailed information.

Foothills Auto Sales

foothillsautosalestn.com

865-980-8500

2617 Highway 411 S

Maryville, TN 37801

© 2018 AutoRevo - All rights reserved. - Powered by [AutoRevo](#)