

## 2013 Chevrolet Tahoe LT

View this car on our website at [bleskinmotors.com/6548341/ebrochure](http://bleskinmotors.com/6548341/ebrochure)

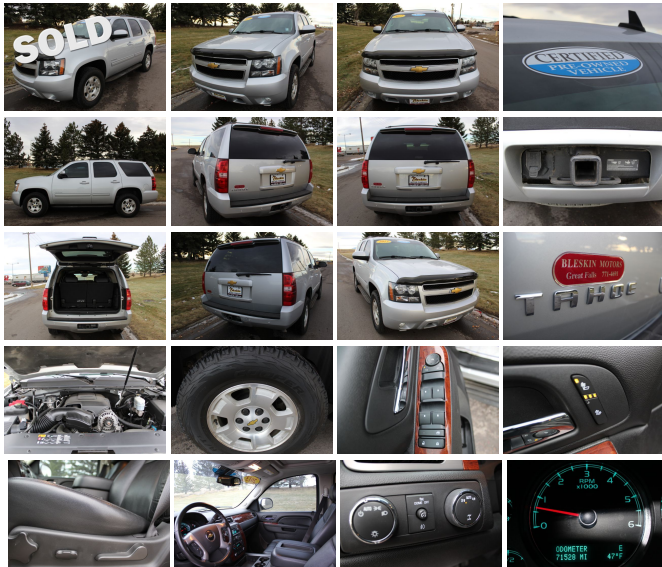


Our Price **\$25,995**

### Specifications:

<b>Year:</b>	2013
<b>VIN:</b>	1GNSKBE09DR352624
<b>Make:</b>	Chevrolet
<b>Stock:</b>	18385B
<b>Model/Trim:</b>	Tahoe LT
<b>Condition:</b>	Pre-Owned
<b>Body:</b>	SUV
<b>Exterior:</b>	Champagne Silver Metallic
<b>Engine:</b>	ENGINE, VORTEC 5.3L V8 SFI FLEXFUEL
<b>Interior:</b>	Light Titanium/Dark Titanium Leather Interior Leather
<b>Mileage:</b>	71,542
<b>Drivetrain:</b>	4 Wheel Drive
<b>Economy:</b>	City 15 / Highway 21

Owners Manuals, Power Steering, Luggage Rack, AM/FM/CD/SAT



2013 Chevrolet Tahoe LT

Bleskin Motor Company - 406-771-4691 - View this car on our website at [bleskinmotors.com/6548341/ebrochure](http://bleskinmotors.com/6548341/ebrochure)

## Our Location :



2013 Chevrolet Tahoe LT

Bleskin Motor Company - 406-771-4691 - View this car on our website at [bleskinmotors.com/6548341/ebrochure](http://bleskinmotors.com/6548341/ebrochure)

## Installed Options

### Interior

- Seats, front bucket with leather-appointed seating (AG1) 6-way power driver and (AG2) front passenger seat adjusters, adjustable head restraints, driver manual lumbar control, floor console and rear storage pockets
- Seats, second row 60/40 split-folding bench, 3-passenger with center armrest with 2 cup holders
- Seats, heated, driver and front passenger (Included and only available with (A95) front bucket seats. (AN3) front bucket seats contain integrated seat heaters.)
- Seat adjuster, driver 6-way power- Seat adjuster, front passenger 6-way power
- Seats, third row 50/50 split-bench, 3-passenger removable, all-belts-to-seat
- Console, floor with storage area, cup holders and integrated second row audio controls
- Headliner, cloth- Floor covering, color-keyed carpeting
- Floor mats, color-keyed carpeted first and second row, removable
- Steering column, Tilt-Wheel, adjustable with brake/transmission shift interlock
- Steering wheel, leather-wrapped
- Steering wheel controls, mounted audio and cruise controls
- Instrumentation, analog with speedometer, odometer with trip odometer, fuel level, voltmeter, engine temperature, oil pressure and tachometer
- Warning tones headlamp on, key-in-ignition, driver and right-front passenger safety belt unfasten and turn signal on
- Windows, power with driver Express-Down and lockout features
- Pedals, power-adjustable for accelerator and brake (Includes memory function with (AN3) front bucket seats.)
- Door locks, power programmable with lockout protection
- Remote vehicle starter system includes Remote Keyless Entry
- Cruise control, electronic with set and resume speed
- Theft-deterrent system, vehicle, PASS-Key III
- Heater, rear auxiliary with rear passenger heating ducts
- Air conditioning, tri-zone automatic climate control with individual climate settings for driver and right front passenger
- Air conditioning, rear auxiliary- Defogger, rear-window electric

- Power outlets, 5 auxiliary, 12-volt includes 2 on the instrument panel, 1 in the cargo area, 1 inside the center console and 1 at the back of the console
- Mirror, inside rearview manual day/night
- Visors, driver and front passenger illuminated vanity mirrors, padded with cloth trim, extends on rod
- Assist handles, front passenger and second row outboard
- Lighting, interior with dome light, driver- and passenger-side door switch with delayed entry feature, cargo lights, door handle or Remote Keyless Entry-activated illuminated entry and map lights in front and second seat positions

---

## Exterior

- Wheels, 4 - 17" x 7.5" (43.2 cm x 19.1 cm) aluminum, 5-spoke with smooth surface and rectangular pockets
- Tires, P265/70R17 all-season, blackwall (Not available with (Z71) Off-Road Suspension Package.)
- Wheel, 17" (43.2 cm) full-size, steel spare
- Tire carrier, lockable outside spare winch-type mounted under frame at rear
- Tire, spare P265/70R17 all-season blackwall
- Luggage rack side rails, roof-mounted, Black
- Luggage rack center rails, roof-mounted, Black- Fascia, front color-keyed
- Fascia, rear color-keyed- Moldings, color-keyed bodyside
- Assist steps, Black (Not available with (Z71) Off-Road Suspension Package.)
- Headlamps, dual halogen composite with automatic exterior lamp control and flash-to-pass feature
- Fog lamps, front, halogen
- Mirrors, outside heated power-adjustable, manual-folding (Mirror caps are color-keyed.)
- Glass, Solar-Ray deep-tinted (all windows except light-tinted glass on windshield and driver- and front passenger-side glass)
- Wiper, rear intermittent with washer- Door handles, color-keyed
- Liftgate with liftglass rear door system with rear-window wiper/washer

---

## Safety

- Seats, front bucket with leather-appointed seating (AG1) 6-way power driver and (AG2) front passenger seat adjusters, adjustable head restraints, driver manual lumbar control, floor console and rear storage pockets
- Seats, second row 60/40 split-folding bench, 3-passenger with center armrest with 2 cup holders
- Seats, heated, driver and front passenger (Included and only available with (A95) front bucket seats. (AN3) front bucket seats contain integrated seat heaters.)
- Seat adjuster, driver 6-way power- Seat adjuster, front passenger 6-way power
- Seats, third row 50/50 split-bench, 3-passenger removable, all-belts-to-seat
- Console, floor with storage area, cup holders and integrated second row audio controls
- Headliner, cloth- Floor covering, color-keyed carpeting
- Floor mats, color-keyed carpeted first and second row, removable
- Steering column, Tilt-Wheel, adjustable with brake/transmission shift interlock
- Steering wheel, leather-wrapped
- Steering wheel controls, mounted audio and cruise controls
- Instrumentation, analog with speedometer, odometer with trip odometer, fuel level, voltmeter, engine temperature, oil pressure and tachometer
- Warning tones headlamp on, key-in-ignition, driver and right-front passenger safety belt unfasten and turn signal on
- Windows, power with driver Express-Down and lockout features
- Pedals, power-adjustable for accelerator and brake (Includes memory function with (AN3) front bucket seats.)
- Door locks, power programmable with lockout protection
- Remote vehicle starter system includes Remote Keyless Entry
- Cruise control, electronic with set and resume speed
- Theft-deterrent system, vehicle, PASS-Key III
- Heater, rear auxiliary with rear passenger heating ducts
- Air conditioning, tri-zone automatic climate control with individual climate settings for driver and right front passenger
- Air conditioning, rear auxiliary- Defogger, rear-window electric
- Power outlets, 5 auxiliary, 12-volt includes 2 on the instrument panel, 1 in the cargo area, 1 inside the center console and 1 at the back of the console
- Mirror, inside rearview manual day/night
- Visors, driver and front passenger illuminated vanity mirrors, padded with cloth trim, extends on rod
- Assist handles, front passenger and second row outboard
- Lighting, interior with dome light, driver- and passenger-side door switch with delayed entry feature, cargo lights, door handle or Remote Keyless Entry-activated illuminated entry and map lights in front and second seat positions

---

## Mechanical

- Engine, Vortec 5.3L V8 SFI FlexFuel with Active Fuel Management, capable of running on unleaded or up to 85% ethanol (with gas - 320 hp (238.6 kW) @ 5400 rpm - 335 lb.-ft. of

unleaded or up to 85% ethanol (with gas - 326 hp [243.1 kW] @ 5300 rpm, 348 lb-ft of torque [469.8 N-m] @ 4000 rpm, with E85 ethanol - 326 hp [243.1 kW] @ 5300 rpm, 348 lb-ft of torque [469.8 N-m] @ 4400 rpm), iron block

- Transmission, 6-speed automatic, electronically controlled with overdrive and tow/haul mode
- Rear axle, 3.08 ratio (Not available with (K5L) Heavy-Duty Trailering Package.)
- Suspension Package, Premium Smooth Ride
- GVWR, 7300 lbs. (3311 kg) (Standard on 4WD models.)
- Differential, heavy-duty locking rear- 4-wheel drive
- Transfer case, active, single-speed, electronic Autotrac with rotary controls, does not include neutral. Cannot be dinghy towed. (Requires (GU4) 3.08 rear axle ratio. Not available on 2WD models or with (K5L) heavy-duty trailering package.)
- Battery, 660 cold cranking amps with 80 amp hour rating - Alternator, 160 amps
- Trailering equipment includes trailering hitch platform, 7-wire harness with independent fused trailering circuits mated to a 7-way sealed connector and 2" trailering receiver
- Recovery hooks, front, frame-mounted (Included and only available on 2WD models when (Z71) Off-Road Suspension Package is ordered. Standard on 4WD models.)
- Suspension, front coil-over-shock with stabilizer bar
- Suspension, rear multi-link with coil springs- Steering, power
- Brakes, 4-wheel antilock, 4-wheel disc, VAC power- Powertrain grade braking

## Option Packages

### Factory Installed Packages

- ENGINE, VORTEC 5.3L V8 SFI

#### FLEXFUEL

with Active Fuel Management,  
capable of running on  
unleaded or up to 85% ethanol  
(with gas - 326 hp [243.1 kW]  
@ 5300 rpm, 348 lb-ft of  
torque [469.8 N-m] @ 4000  
rpm, with E85 ethanol - 326 hp  
[243.1 kW] @ 5300 rpm, 348  
lb-ft of torque [469.8 N-m] @  
4400 rpm), iron block

All vehicles are pre-owned. The e-Price is a cash price and excludes tax, title, license and \$50.00 doc fee. Prices subject to change. Contact our Sales Team for detailed information.

Bleskin Motor Company

[bleskinmotors.com](http://bleskinmotors.com)

406-771-4691

4901 10th Avenue South

Great Falls, Montana 59405

© 2019 AutoRevo - All rights reserved. - Powered by AutoRevo