

2833 Alpine Rd  
Eau Claire, Wisconsin  
54703

# 2015 Jeep Grand Cherokee Overland Clean Diesel 4x4 SUV w/Heated/Cooled Seats, Navigation & Panoramic Roof

**Steve Allingham**

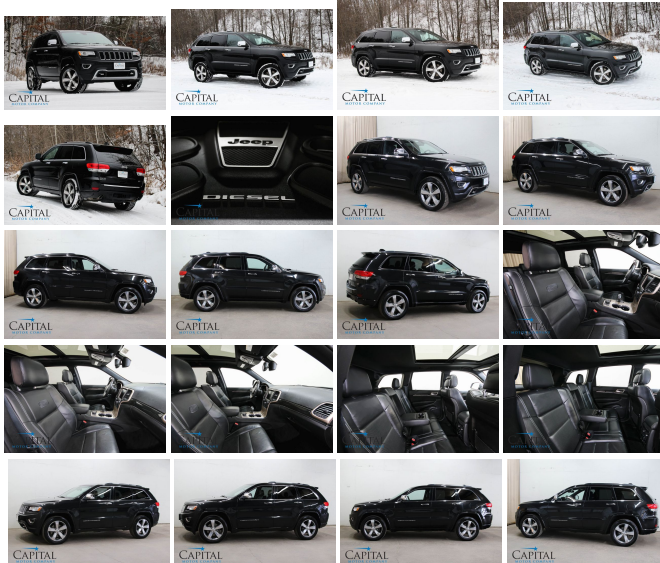
View this car on our website at [capitalmotorcompany.com/6548068/ebrochure](http://capitalmotorcompany.com/6548068/ebrochure)



Your Price **\$23,950**

## Specifications:

<b>Year:</b>	2015
<b>VIN:</b>	1C4RJFCM5FC678630
<b>Make:</b>	Jeep
<b>Stock:</b>	4590
<b>Model/Trim:</b>	Grand Cherokee Overland Clean Diesel 4x4 SUV w/Heated/Cooled Seats, Navigation & Panoramic Roof
<b>Condition:</b>	Pre-Owned
<b>Body:</b>	SUV
<b>Exterior:</b>	Brilliant Black Crystal Pearlcoat
<b>Engine:</b>	3.0L Clean Diesel V6
<b>Interior:</b>	Black Leather
<b>Transmission:</b>	8-Speed Automatic
<b>Mileage:</b>	111,064
<b>Drivetrain:</b>	4 Wheel Drive
<b>Economy:</b>	City 22 / Highway 30



We have for sale a gorgeous, 1-Owner 2015 Jeep Grand Cherokee Overland 4x4 Eco-Diesel Luxury SUV that looks and drives fantastic! This Jeep is one of the most capable and versatile SUVs on the road – or off! It has beautiful Black paint with 20-Inch Wheels, a fully loaded interior and the ability to get 30MPG on the highway or tow over 7,000 pounds! If you like how this Jeep looks in the pictures you will fall in love when once you get to drive it!

30MPG on the Highway thanks to the exceptionally smooth 3.0L EcoDiesel V6 engine and 8-Speed Automatic transmission! This Clean Diesel Engine is nothing like the old truck diesels. In fact, most people would never even know this Jeep had a diesel engine! The Quadra-Drive II 4x4 system is a phenomenal full-time 4-wheel drive system that makes this

the perfect SUV to drive in any part of the country.

**DRIVE SELECTABLE Select-Terrain 4x4 Settings** allows the driver to choose from several different driving modes including: Auto Mode, Snow Mode, Mud Mode, Sand Mode and even Rock Crawling Mode! Each setting specifically tailors the SUV's engine, transmission, suspension and traction settings are configured for optimum drivability!

**7,200 Pound Towing Capacity** thanks to the added torque from the Diesel V6 engine this Jeep can handle most people's towing duties without breaking sweat. You won't have any concerns towing your boat, camper or utility trailer!

**Quadra-Lift Air Suspension** makes this Jeep one of the most capable, "Go anywhere, do anything" SUVs on the road! The suspension is height adjustable by push of a button which allows you to raise the suspension for more ground clearance or lower it for better handling!

**Heated Steering Wheel, Heated & Ventilated Front Seats and Heated Rear Seats** are all very nice options to have especially in this part of the country. The steering wheel and seats heat up fast and make a cold morning commute to work or class so much better. Additionally, with the **Factory Remote Start** you have the ability to start the Jeep from inside your home or office so you never have to get into an uncomfortable Jeep again!

**Touchscreen Navigation System** with turn-by-turn directions. This system is very simple to use and the screen also displays the 4-wheel drive and vehicle info and it will automatically switch to the **Rear View Camera** display when you put the vehicle in reverse!

**10-Speaker Surround Sound Audio System** that offers amazing sound quality with **AM/FM/CD audio, Satellite Radio, SD Memory Card Storage, Aux/USB Audio Inputs and Bluetooth Streaming Audio** so you can sync your phone or Mp3 player and bring all of your favorite music on the road with you! It also has **Bluetooth Connection** so you can send and receive phone calls while driving without distraction!

To make sure this Jeep Grand Cherokee runs and

The more we know about your vehicle, the better we can help you. Our inspection process is very thorough and all of the SUV's systems, fluids, brakes, suspension, tires, electrical, engine and drivetrain are inspected so there are no surprises. If you have any questions or you are considering trading in your current vehicle, please call anytime at (715) 833-2020.

...

2015 Jeep Grand Cherokee Overland Clean Diesel 4x4 SUV w/Heated/Cooled Seats, Navigation & Panoramic Roof  
Capital Motor Company - - View this car on our website at [capitalmotorcompany.com/6548068/ebrochure](http://capitalmotorcompany.com/6548068/ebrochure)

### Our Location :



2015 Jeep Grand Cherokee Overland Clean Diesel 4x4 SUV w/Heated/Cooled Seats, Navigation & Panoramic Roof  
Capital Motor Company - - View this car on our website at [capitalmotorcompany.com/6548068/ebrochure](http://capitalmotorcompany.com/6548068/ebrochure)

## Installed Options

### Interior

- 12-Way Power Driver Seat -inc: Power Recline, Height Adjustment, Fore/Aft Movement, Cushion Tilt and Power 4-Way Lumbar Support
- 12-Way Power Passenger Seat -inc: Power Recline, Height Adjustment, Fore/Aft Movement, Cushion Tilt and Power 4-Way Lumbar Support
- 2 Seatback Storage Pockets- 3 12V DC Power Outlets
- 3 12V DC Power Outlets and 1 AC Power Outlet
- 60-40 Folding Split-Bench Front Facing Heated Manual Reclining Fold Forward Seatback Leather Rear Seat
- 8.4" Touchscreen Display- Air Filtration- Cargo Area Concealed Storage
- Cargo Features -inc: Cargo Tray/Organizer- Cargo Net- Cargo Space Lights
- Carpet Floor Trim- Compass- Cruise Control w/Steering Wheel Controls
- Day-Night Auto-Dimming Rearview Mirror- Delayed Accessory Power

- Digital/Analog Display
- Driver And Passenger Heated-Cushion, Driver And Passenger Heated-Seatback and Ventilated Front Seats
- Driver And Passenger Visor Vanity Mirrors w/Driver And Passenger Illumination
- Dual Zone Front Automatic Air Conditioning w/Front Infrared
- FOB Controls -inc: Trunk/Hatch/Tailgate and Remote Engine Start
- Fade-To-Off Interior Lighting- Front And Rear Map Lights
- Front Center Armrest w/Storage and Rear Center Armrest- Front Cupholder
- Front Seats w/Power 4-Way Driver Lumbar
- Full Carpet Floor Covering -inc: Carpet Front And Rear Floor Mats - Full Cloth Headliner
- Full Floor Console w/Covered Storage, Mini Overhead Console w/Storage, 3 12V DC Power Outlets and 1 AC Power Outlet
- Garage Door Transmitter
- Gauges -inc: Speedometer, Odometer, Oil Pressure, Engine Coolant Temp, Tachometer, Oil Temperature, Transmission Fluid Temp, Engine Hour Meter, Trip Odometer and Trip Computer
- HVAC -inc: Console Ducts- Heated Leather/Genuine Wood Steering Wheel
- Illuminated Locking Glove Box
- Instrument Panel Covered Bin, Driver / Passenger And Rear Door Bins
- Interior Trim -inc: Genuine Wood/Metal-Look Instrument Panel Insert, Genuine Wood/Chrome Door Panel Insert, Metal-Look Console Insert, Chrome/Metal-Look Interior Accents and Leather Upholstered Dashboard
- Leather Door Trim Insert- Leather Trim Seats w/Edge Welting
- Leather/Metal-Look Gear Shift Knob
- Manual Anti-Whiplash Adjustable Front Head Restraints and Fixed Rear Head Restraints
- Memory Settings -inc: Driver Seat, Door Mirrors and Audio - Outside Temp Gauge
- Perimeter Alarm- Power 1st Row Windows w/Driver And Passenger 1-Touch Up/Down
- Power Door Locks w/Autolock Feature- Power Fuel Flap Locking Type
- Power Rear Windows and Fixed 3rd Row Windows
- Power Tilt/Telescoping Steering Column- Proximity Key For Doors And Push Button Start
- Rear Cupholder
- Remote Keyless Entry w/Integrated Key Transmitter, Illuminated Entry and Panic Button
- Remote Releases -Inc: Power Fuel- Roll-Up Cargo Cover
- Sentry Key Engine Immobilizer - Systems Monitor- Tracker System- Trip Computer
- Valet Function- Voice Recorder

---

## Exterior

- Body-Colored Front Bumper w/Gray Rub Strip/Fascia Accent, Chrome Bumper Insert and 2 Tow Hooks
- Body-Colored Grille w/Chrome Accents
- Body-Colored Rear Step Bumper w/Gray Rub Strip/Fascia Accent and Chrome Bumper Insert
- Chrome Bodyside Insert, Rocker Panel Extensions and Body-Colored Fender Flares
- Chrome Door Handles
- Chrome Power w/Tilt Down Heated Auto Dimming Side Mirrors w/Power Folding and Turn Signal Indicator
- Chrome Side Windows Trim and Black Front Windshield Trim - Clearcoat Paint
- Deep Tinted Glass
- Express Open/Close Sliding And Tilting Glass 1st And 2nd Row Sunroof w/Power Sunshade
- Fixed Rear Window w/Fixed Interval Wiper, Heated Wiper Park and Defroster
- Front Fog Lamps- Full-Size Spare Tire Mounted Inside Under Cargo
- Fully Automatic Projector Beam High Intensity Low/High Beam Daytime Running Auto-Leveling Auto High-Beam Headlamps w/Delay-Off
- Galvanized Steel/Aluminum Panels- LED Brakelights- Laminated Glass- Lip Spoiler
- Perimeter/Approach Lights- Power Liftgate Rear Cargo Access- Roof Rack Rails Only
- Speed Sensitive Rain Detecting Variable Intermittent Wipers- Steel Spare Wheel
- Tailgate/Rear Door Lock Included w/Power Door Locks- Tires: P265/50R20 BSW AS
- Wheels: 20" x 8.0" Aluminum

---

## Safety

- 12-Way Power Driver Seat -inc: Power Recline, Height Adjustment, Fore/Aft Movement, Cushion Tilt and Power 4-Way Lumbar Support
- 12-Way Power Passenger Seat -inc: Power Recline, Height Adjustment, Fore/Aft Movement, Cushion Tilt and Power 4-Way Lumbar Support
- 2 Seatback Storage Pockets- 3 12V DC Power Outlets
- 3 12V DC Power Outlets and 1 AC Power Outlet
- 60-40 Folding Split-Bench Front Facing Heated Manual Reclining Fold Forward Seatback Leather Rear Seat
- 8.4" Touchscreen Display- Air Filtration- Cargo Area Concealed Storage
- Cargo Features -inc: Cargo Tray/Organizer- Cargo Net- Cargo Space Lights
- Carpet Floor Trim- Compass- Cruise Control w/Steering Wheel Controls
- Day-Night Auto-Dimming Rearview Mirror- Delayed Accessory Power

- Digital/Analog Display
- Driver And Passenger Heated-Cushion, Driver And Passenger Heated-Seatback and Ventilated Front Seats
- Driver And Passenger Visor Vanity Mirrors w/Driver And Passenger Illumination
- Dual Zone Front Automatic Air Conditioning w/Front Infrared
- FOB Controls -inc: Trunk/Hatch/Tailgate and Remote Engine Start
- Fade-To-Off Interior Lighting- Front And Rear Map Lights
- Front Center Armrest w/Storage and Rear Center Armrest- Front Cupholder
- Front Seats w/Power 4-Way Driver Lumbar
- Full Carpet Floor Covering -inc: Carpet Front And Rear Floor Mats - Full Cloth Headliner
- Full Floor Console w/Covered Storage, Mini Overhead Console w/Storage, 3 12V DC Power Outlets and 1 AC Power Outlet
- Garage Door Transmitter
- Gauges -inc: Speedometer, Odometer, Oil Pressure, Engine Coolant Temp, Tachometer, Oil Temperature, Transmission Fluid Temp, Engine Hour Meter, Trip Odometer and Trip Computer
- HVAC -inc: Console Ducts- Heated Leather/Genuine Wood Steering Wheel
- Illuminated Locking Glove Box
- Instrument Panel Covered Bin, Driver / Passenger And Rear Door Bins
- Interior Trim -inc: Genuine Wood/Metal-Look Instrument Panel Insert, Genuine Wood/Chrome Door Panel Insert, Metal-Look Console Insert, Chrome/Metal-Look Interior Accents and Leather Upholstered Dashboard
- Leather Door Trim Insert- Leather Trim Seats w/Edge Welting
- Leather/Metal-Look Gear Shift Knob
- Manual Anti-Whiplash Adjustable Front Head Restraints and Fixed Rear Head Restraints
- Memory Settings -inc: Driver Seat, Door Mirrors and Audio - Outside Temp Gauge
- Perimeter Alarm- Power 1st Row Windows w/Driver And Passenger 1-Touch Up/Down
- Power Door Locks w/Autolock Feature- Power Fuel Flap Locking Type
- Power Rear Windows and Fixed 3rd Row Windows
- Power Tilt/Telescoping Steering Column- Proximity Key For Doors And Push Button Start
- Rear Cupholder
- Remote Keyless Entry w/Integrated Key Transmitter, Illuminated Entry and Panic Button
- Remote Releases -Inc: Power Fuel- Roll-Up Cargo Cover
- Sentry Key Engine Immobilizer- Systems Monitor- Tracker System- Trip Computer
- Valet Function- Voice Recorder

## Mechanical

- 1150# Maximum Payload- 180 Amp Alternator- 24.6 Gal. Fuel Tank
- 3.45 Rear Axle Ratio- 4-Corner Auto-Leveling Suspension
- 4-Wheel Disc Brakes w/4-Wheel ABS, Front Vented Discs, Brake Assist and Hill Hold Control
- 50 State Emissions- 700CCA Maintenance-Free Battery w/Run Down Protection
- Automatic Full-Time Four-Wheel Drive
- Automatic w/Driver Control Height Adjustable Suspension
- Class IV Towing Equipment -inc: Harness, Hitch and Trailer Sway Control
- Dual Stainless Steel Exhaust w/Chrome Tailpipe Finisher
- Electro-Hydraulic Power Assist Steering- Electronic Transfer Case- Engine Oil Cooler
- Engine: 3.6L V6 24V VVT- Front And Rear Anti-Roll Bars- GVWR: 6,500 lbs
- Gas-Pressurized Shock Absorbers- Hill Descent Control- Multi-Link Rear Suspension
- Normal Duty Suspension- Permanent Locking Hubs
- Short And Long Arm Front Suspension
- Transmission w/Driver Selectable Mode and Sequential Shift Control w/Steering Wheel Controls
- Transmission: 8-Speed Automatic (845RE)

## Option Packages

### Factory Installed Packages

ENGINE: 3.0L V6 TURBO DIESEL  
-inc: GVWR: 6,800 lbs, 220 Amp Alternator, 6 Additional Gallons Of Diesel Fuel, Anti-Lock 4-Wheel Disc HD Brakes, Dual Bright Exhaust Tips, Heavy Duty Engine Cooling, Electro-Hydraulic Power Steering, EcoDiesel Badge, Engine Oil Cooler, 800 Amp Maintenance Free Battery, 230MM Rear Axle, Selective Catalytic Reduction (Urea)

QUICK ORDER PACKAGE 22P  
-inc: Engine: 3.0L V6 Turbo

-inc: engine: 3.0L V6 Turbo  
Diesel, Transmission: 8-Speed  
Automatic (8HP70)

---

Option Packages Total  
\$4,500

All vehicles are pre-owned. The e-Price is a cash price and excludes tax, title, license and \$50.00 doc fee. Prices subject to change. Contact our Sales Team for detailed information.

---

Capital Motor Company

[capitalmotorcompany.com](http://capitalmotorcompany.com)

2833 Alpine Rd

Eau Claire, Wisconsin 54703

© 2019 AutoRevo - All rights reserved. - Powered by [AutoRevo](#)