

2833 Alpine Rd
Eau Claire, Wisconsin
54703

2017 Volvo XC60 Inscription AWD Crossover w/Navigation, Heated F/R Seats, Panoramic Roof, BLIS & 20" Rims

Steve Allingham

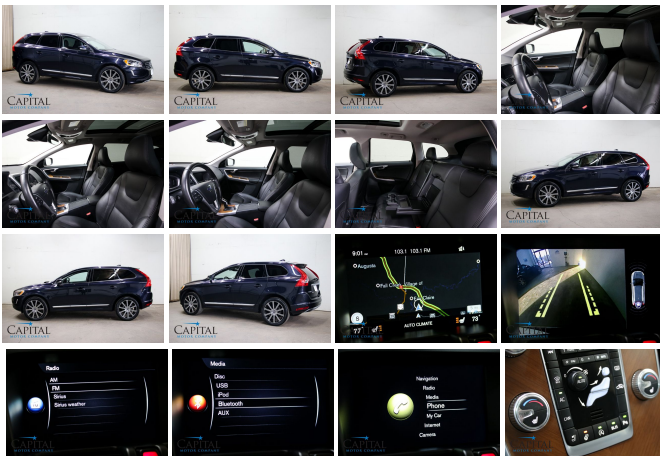
View this car on our website at capitalmotorcompany.com/6547893/ebrochure



Your Price **\$33,950**

Specifications:

Year:	2017
VIN:	YV449MRUXH2034139
Make:	Volvo
Stock:	4582
Model/Trim:	XC60 Inscription AWD Crossover w/Navigation, Heated F/R Seats, Panoramic Roof, BLIS & 20" Rims
Condition:	Pre-Owned
Body:	SUV
Exterior:	Magic Blue Metallic
Engine:	2.0L Twincharged 4-Cylinder
Interior:	Black Leather
Transmission:	8-Speed Automatic
Mileage:	19,258
Drivetrain:	All Wheel Drive
Economy:	City 19 / Highway 27



COMING SOON...

Thank you for your interest in this 2017 Volvo XC60 Inscription AWD Luxury Crossover SUV with Navigation System, Rear-View Camera, Blind-Spot Information System, Heated Front and Rear Seats, Heated Steering Wheel, Keyless Entry and Start, Preferred Option Package, High Performance Audio System with Streaming Bluetooth Audio, 20-Inch Wheel Package and only 19,258 Miles! It has just arrived at our showroom and has not yet completed our entire pre-sale process. We will have a full description and photos very shortly. If you would like more information or would like to come see the vehicle, please call us at (715) 833-2020.

...

2017 Volvo XC60 Inscription AWD Crossover w/Navigation, Heated F/R Seats, Panoramic Roof, BLIS & 20" Rims
Capital Motor Company - - View this car on our website at capitalmotorcompany.com/6547893/ebrochure

Our Location :



2017 Volvo XC60 Inscription AWD Crossover w/Navigation, Heated F/R Seats, Panoramic Roof, BLIS & 20" Rims
Capital Motor Company - - View this car on our website at capitalmotorcompany.com/6547893/ebrochure

Installed Options

Interior

- 2 12V DC Power Outlets- 2 Seatback Storage Pockets
- 40-20-40 Folding Bench Front Facing Fold Forward Seatback Rear Seat
- 8-Way Driver Seat- 8-Way Passenger Seat- Air Filtration
- Anti-Whiplash Fixed Front Head Restraints and Manual Adjustable Rear Head Restraints
- Bucket Front Seats w/Leatherette Back Material - Cargo Area Concealed Storage
- Cargo Space Lights- Carpet Floor Trim and Carpet Trunk Lid/Rear Cargo Door Trim
- Compass- Cruise Control w/Steering Wheel Controls
- Day-Night Auto-Dimming Rearview Mirror- Delayed Accessory Power- Digital Display
- Driver And Passenger Visor Vanity Mirrors w/Driver And Passenger Illumination
- Driver Foot Rest- Dual Zone Front Automatic Air Conditioning- Engine Immobilizer
- FOB Controls -inc: Trunk/Hatch/Tailgate and Remote Engine Start
- Fade-To-Off Interior Lighting- Front And Rear Map Lights
- Front Center Armrest and Rear Center Armrest w/Storage
- Front Comfort Seats -inc: power lumbar, power driver seat w/memory and power passenger seat
- Front Cupholder- Full Carpet Floor Covering -inc: Carpet Front And Rear Floor Mats
- Full Cloth Headliner- Full Floor Console w/Covered Storage and 2 12V DC Power Outlets
- Gauges -inc: Speedometer, Odometer, Tachometer, Trip Odometer and Trip Computer
- HVAC -inc: Underseat Ducts and Headliner/Pillar Ducts - Illuminated Locking Glove Box
- Instrument Panel Bin, Driver / Passenger And Rear Door Bins
- Interior Trim -inc: Aluminum/Genuine Wood Instrument Panel Insert, Aluminum/Genuine Wood Door Panel Insert, Aluminum/Genuine Wood Console Insert and Aluminum Interior Accents
- Leather Seating Surfaces- Leather/Aluminum Gear Shift Knob
- Leather/Aluminum Steering Wheel- Leatherette Door Trim Insert
- Manual Tilt/Telescoping Steering Column- Memory Settings -inc: Door Mirrors

- Outside Temp Gauge- Perimeter Alarm
- Power 1st Row Windows w/Front And Rear 1-Touch Up/Down
- Power Door Locks w/Autolock Feature
- Power Rear Windows and Fixed 3rd Row Windows
- Proximity Key For Doors And Push Button Start - Rear Cupholder
- Redundant Digital Speedometer
- Remote Keyless Entry w/Integrated Key Transmitter, Illuminated Entry and Panic Button
- Remote Releases -Inc: Power Cargo Access and Power Fuel
- Sensus Navigation with Mapcare- Smart Device Integration- Systems Monitor
- Tracker System- Trip Computer- Trunk/Hatch Auto-Latch- Valet Function

Exterior

- Body-Colored Door Handles
- Body-Colored Front Bumper w/Black Rub Strip/Fascia Accent
- Body-Colored Power w/Tilt Down Heated Auto Dimming Side Mirrors w/Manual Folding and Turn Signal Indicator
- Body-Colored Rear Step Bumper w/Black Rub Strip/Fascia Accent
- Chrome Bodyside Insert, Body-Colored Bodyside Cladding and Rocker Panel Extensions
- Chrome Grille- Chrome Side Windows Trim
- Compact Spare Tire Mounted Inside Under Cargo- Deep Tinted Glass
- Express Open/Close Sliding And Tilting Laminated Glass 1st And 2nd Row Sunroof w/Power Sunshade
- Fixed Rear Window w/Fixed Interval Wiper and Defroster
- Fully Automatic Aero-Composite Halogen Daytime Running Headlamps w/Delay-Off
- Galvanized Steel/Aluminum Panels- LED Brakelights- Lip Spoiler- Monotone Paint
- Perimeter/Approach Lights- Power Liftgate Rear Cargo Access
- Rain Detecting Variable Intermittent Wipers- Rear Fog Lamps- Roof Rack Rails Only
- Steel Spare Wheel- Tailgate/Rear Door Lock Included w/Power Door Locks
- Tires: P255/45R20 AS BSW- Wheels: 20" Titania Diamond Cut Alloy

Safety

- 2 12V DC Power Outlets- 2 Seatback Storage Pockets
- 40-20-40 Folding Bench Front Facing Fold Forward Seatback Rear Seat
- 8-Way Driver Seat- 8-Way Passenger Seat- Air Filtration
- Anti-Whiplash Fixed Front Head Restraints and Manual Adjustable Rear Head Restraints
- Bucket Front Seats w/Leatherette Back Material - Cargo Area Concealed Storage
- Cargo Space Lights- Carpet Floor Trim and Carpet Trunk Lid/Rear Cargo Door Trim
- Compass- Cruise Control w/Steering Wheel Controls
- Day-Night Auto-Dimming Rearview Mirror- Delayed Accessory Power- Digital Display
- Driver And Passenger Visor Vanity Mirrors w/Driver And Passenger Illumination
- Driver Foot Rest- Dual Zone Front Automatic Air Conditioning- Engine Immobilizer
- FOB Controls -inc: Trunk/Hatch/Tailgate and Remote Engine Start
- Fade-To-Off Interior Lighting- Front And Rear Map Lights
- Front Center Armrest and Rear Center Armrest w/Storage
- Front Comfort Seats -inc: power lumbar, power driver seat w/memory and power passenger seat
- Front Cupholder- Full Carpet Floor Covering -inc: Carpet Front And Rear Floor Mats
- Full Cloth Headliner- Full Floor Console w/Covered Storage and 2 12V DC Power Outlets
- Gauges -inc: Speedometer, Odometer, Tachometer, Trip Odometer and Trip Computer
- HVAC -inc: Underseat Ducts and Headliner/Pillar Ducts - Illuminated Locking Glove Box
- Instrument Panel Bin, Driver / Passenger And Rear Door Bins
- Interior Trim -inc: Aluminum/Genuine Wood Instrument Panel Insert, Aluminum/Genuine Wood Door Panel Insert, Aluminum/Genuine Wood Console Insert and Aluminum Interior Accents
- Leather Seating Surfaces- Leather/Aluminum Gear Shift Knob
- Leather/Aluminum Steering Wheel- Leatherette Door Trim Insert
- Manual Tilt/Telescoping Steering Column- Memory Settings -inc: Door Mirrors
- Outside Temp Gauge- Perimeter Alarm
- Power 1st Row Windows w/Front And Rear 1-Touch Up/Down
- Power Door Locks w/Autolock Feature
- Power Rear Windows and Fixed 3rd Row Windows
- Proximity Key For Doors And Push Button Start - Rear Cupholder
- Redundant Digital Speedometer
- Remote Keyless Entry w/Integrated Key Transmitter, Illuminated Entry and Panic Button
- Remote Releases -Inc: Power Cargo Access and Power Fuel
- Sensus Navigation with Mapcare- Smart Device Integration- Systems Monitor
- Tracker System- Trip Computer- Trunk/Hatch Auto-Latch- Valet Function

Mechanical

- 18.5 Gal. Fuel Tank- 180 Amp Alternator- 3.75 Axle Ratio
- 4-Wheel Disc Brakes w/4-Wheel ABS- Front And Rear Vented Discs- Brake Assist and

- 4-Wheel Disc Brakes w/ 4-Wheel ABS, Front And Rear Vented Discs, Brake Assist and Electric Parking Brake
- 70-Amp/Hr 600CCA Maintenance-Free Battery w/Run Down Protection
- Brake Actuated Limited Slip Differential
- Engine: 2.0L 16V I4 Supercharged Turbo Drive-E - Front And Rear Anti-Roll Bars
- Full-Time All-Wheel Drive- GVWR: TBD- Gas-Pressurized Shock Absorbers
- Hydraulic Power-Assist Steering- Multi-Link Rear Suspension w/Coil Springs
- Permanent Locking Hubs
- Quasi-Dual Stainless Steel Exhaust w/Polished Tailpipe Finisher
- Strut Front Suspension w/Coil Springs- Towing Equipment -inc: Trailer Sway Control
- Transmission w/Oil Cooler
- Transmission: 8-Speed Geartronic Automatic -inc: Start/Stop and Adaptive Shift

Option Packages

Factory Installed Packages

ENGINE: 2.0L 16V I4 SUPERCHARGED
TURBO DRIVE-E

CLIMATE PACKAGE

-inc: Heated Rear Seats, Heated Steering Wheel, Interior Air Quality System (IAQS), Heated Windshield, Heated Front Seats, Heated Windshield Washer Nozzles **\$1,550**

HEATED FRONT SEATS
\$500

PREFERRED OPTION PACKAGE

-inc: Electric Folding Rear Headrests, HomeLink Integrated Garage Door Opener, Active Dual Xenon Headlights, Headlight Washers, Front Park Assist, 12V Power Outlet in Cargo Area **\$1,450**

WHEELS: 20" AVIOR ALLOY
\$250

Option Packages Total
\$3,750

All vehicles are pre-owned. The e-Price is a cash price and excludes tax, title, license and \$50.00 doc fee. Prices subject to change. Contact our Sales Team for detailed information.

Capital Motor Company

capitalmotorcompany.com

2833 Alpine Rd

Eau Claire, Wisconsin 54703

© 2019 AutoRevo - All rights reserved. - Powered by AutoRevo