



2002 Ford Mustang GT Premium

NO HAGGLE CASH PRICE! \$4,587

Average Retail Price \$7,845

View this vehicle on our website at sterlingmotorsport.com

[571-313-1989](tel:571-313-1989)

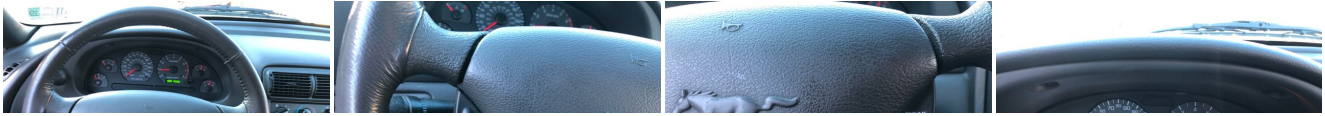
9 Douglas Court Unit 101 , Sterling, VA 20166

Photos

Details

Contact





Specifications:

Year:	2002
VIN:	1FAFP42X32F200500
Make:	Ford
Stock:	200500
Model/Trim:	Mustang GT Premium
Condition:	Pre-Owned
Body:	Coupe
Exterior:	Black
Engine:	4.6L SOHC 260-HP 16-VALVE SMPI V8 ENGINE
Interior:	Dark Charcoal Leather
Transmission:	4-SPEED AUTOMATIC TRANSMISSION W/OD
Mileage:	108,201
Drivetrain:	Rear Wheel Drive
Economy:	City 17 / Highway 24

Vehicle Description

Installed Options

Interior

- Pwr door locks- (2) pwr points- 150 MPH speedometer- Air conditioning
- Cargo compartment lamp Color-keyed carpeting
- Color-keyed cloth headliner/sun visors- Color-keyed floor mats
- Door trim panels w/full-length armrests- Driver-side footrest- Dual covered vanity mirrors
- Front floor console w/armrest, storage bin, cupholders
- Leather reclining front sport bucket seats w/2-way adjustable head restraints
- Leather-wrapped steering wheel
- Light group-inc: dome lamp w/front door courtesy switches- Locking glove box
- Luggage area carpet & trim
- Mach 460 ETR AM/FM stereo radio w/6-disc in-dash CD changer-inc: 230-watt RMS (460-watt peak pwr), 60-watt equalized amp, (2) 85-watt subwoofer amps,(4) 5.5" x 7.5" speakers, (4) 2.5" midrange/tweeters, RDS, DSP, speed-sensitive volume, 3-second anti-skip memory, clock
- Pwr decklid release- Pwr driver seat- Pwr windows w/driver-side express down
- Rear split fold-down seat- Rear window defroster- Remote keyless/illuminated entry
- SecurILock anti-theft system- Speed control- Storage net between visors on headliner
- Tachometer, trip odometer, voltmeter, temp/fuel/oil pressure gauges- Tilt steering wheel

Exterior

- Complex halogen headlamps- Fog lamps- Front/rear color-keyed fascias
- GT composite hood w/flow through scoop- GT side scoops
- Intermittent windshield wipers- Pwr mirrors (RH convex)- Single-wing rear spoiler
- Tinted glass

Safety

- Pwr door locks- (2) pwr points- 150 MPH speedometer- Air conditioning
- Cargo compartment lamp Color-keyed carpeting
- Color-keyed cloth headliner/sun visors- Color-keyed floor mats
- Door trim panels w/full-length armrests- Driver-side footrest- Dual covered vanity mirrors
- Front floor console w/armrest, storage bin, cupholders
- Leather reclining front sport bucket seats w/2-way adjustable head restraints
- Leather-wrapped steering wheel
- Light group-inc: dome lamp w/front door courtesy switches- Locking glove box
- Luggage area carpet & trim
- Mach 460 ETR AM/FM stereo radio w/6-disc in-dash CD changer-inc: 230-watt RMS (460-watt peak pwr), 60-watt equalized amp, (2) 85-watt subwoofer amps,(4) 5.5" x 7.5" speakers, (4) 2.5" midrange/tweeters, RDS, DSP, speed-sensitive volume, 3-second anti-skip memory, clock
- Pwr decklid release- Pwr driver seat- Pwr windows w/driver-side express down
- Rear split fold-down seat- Rear window defroster- Remote keyless/illuminated entry
- SecurILock anti-theft system- Speed control- Storage net between visors on headliner
- Tachometer, trip odometer, voltmeter, temp/fuel/oil pressure gauges- Tilt steering wheel

Mechanical

- 4-wheel anti-lock braking system- 5-speed manual transmission w/OD
- All-speed traction control- P245/45ZR17 performance tires
- Traction-Loc limited slip rear differential- 15" mini-spare tire w/aluminum wheel
- 15.7 gallon fuel tank- 17" x 8" premium aluminum wheels
- 4.6L SOHC 260-HP 16-valve SMPI V8 engine
- Engine block heater *Std & only available on non-fleet vehicles in AK, MN, ND, SD, MT, WI, WY*
- GT Quadra-Shock rear suspension w/variable-rate coil springs- HD 130-amp alternator
- HD 58 amp/hr maintenance-free battery
- Modified MacPherson strut front suspension w/front stabilizer bar
- Pwr 4-wheel disc brakes- Pwr rack & pinion steering- Rear wheel drive
- Stainless steel dual exhaust system- Unique GT strut/shock absorber calibrations

Option Packages

Factory Installed Packages

4.6L SOHC 260-HP 16-VALVE SMPI V8 ENGINE

LEATHER FRONT SPORT BUCKET SEATS

4-SPEED AUTOMATIC TRANSMISSION W/OD

\$815

PREMIUM SERIES ORDER CODE

Option Packages Total

\$815

Price excludes \$699.00 processing fee, registration fees and State and Local sales taxes. 3% surcharge will be added on all CC charges over \$500.00. Deposits are non-refundable. All our sales are based on first-come-first-serve policy. We work very hard to accurately describe our vehicles through text descriptions and elaborate photos. When you purchase a pre-owned vehicle it is not a new vehicle. Any used vehicle can have normal wear and blemishes. Please read the descriptions thoroughly and view all pictures.

Sterling Motorsport

Sterling Motorsport

View this car on our website at sterlingmotorsport.com/6545639

Website: sterlingmotorsport.com

Phone: 571-313-1989

Map: 9 Douglas Court Unit 101, Sterling, VA 20166

