



## 2007 MERCEDES-BENZ C230 2.5L SPORT 53K MLS SERVICE RECORDS AVAILABLE!

**Our Price \$6,990**

**Retail Value \$9,310**

View this vehicle on our website at [boutiqueautosales.com](http://boutiqueautosales.com)

Boutique Auto Sales

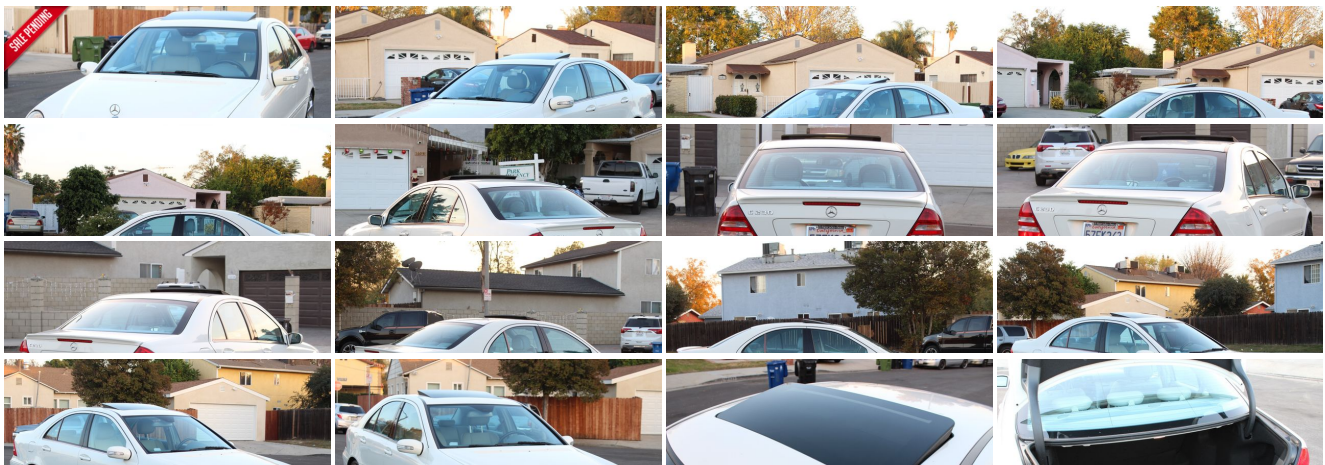
[310-987-1212](tel:310-987-1212)

5950 Laurel Canyon Blvd, North Hollywood, CA 91607

Photos

Details

Contact





## Specifications:

<b>Year:</b>	2007
<b>VIN:</b>	<a href="#">WDBRF52H47A947552</a>
<b>Make:</b>	MERCEDES-BENZ
<b>Stock:</b>	7552
<b>Model/Trim:</b>	C230 2.5L SPORT 53K MLS SERVICE RECORDS AVAILABLE!
<b>Condition:</b>	Pre-Owned
<b>Body:</b>	Sedan
<b>Exterior:</b>	Arctic White
<b>Engine:</b>	2.5L DOHC SMPI 24-valve V6 engine
<b>Interior:</b>	Ash Leather
<b>Transmission:</b>	7-SPEED AUTOMATIC DRIVER-ADAPTIVE TRANSMISSION
<b>Mileage:</b>	53,935
<b>Drivetrain:</b>	Rear Wheel Drive
<b>Economy:</b>	City 19 / Highway 25

## Vehicle Description

### Installed Options

#### Interior

- 10-way adjustable front sport seats w/pwr height & recline, lumbar support
- AM/FM/weatherband stereo w/CD player-inc: MP3 capability, 6-speakers, automatic speed-sensitive volume adjustment, fiber-optic communication among among components
- Anti-theft alarm system w/towaway protection
- Audible reminders-inc: fasten seat belt, release parking brake, headlamps on, remove ignition key
- Automatic dual-zone climate control-inc: dust/pollen filters, tunnel mode w/(1) touch closing of all windows, upper & lower temp sensors, dash-top diffuser vent
- Black Birdseye Maple interior trim
- Black leather-trimmed 3-spoke 4-way tilt & telescoping adjustable sport steering wheel-inc: raised thumbgrips, audio/multifunctional display controls
- Black/silver leather-trimmed sport shift knob- Courtesy lamps w/delay shutoff
- Cruise control- Dual front map lights- Dual illuminated visor vanity mirrors
- Dual seatback pockets
- Electrically heated rear window w/auto shut off based on time & exterior temp
- Entrance lamps in front doors- Folding rear armrest w/slide-out dual cupholders
- Front center armrest-inc: dual enclosed storage, 3-way lid, air vents at rear of console
- Head restraints at all positions- Illuminated 2-tier glovebox
- Illuminated carpeted cargo area
- Instrumentation-inc: fuel & coolant temp gauge, clock, Touch Shift/mode selection display, tachometer
- M-B Tex upholstery- Mercedes-Benz Maintenance System Plus display
- Multifunction display in instrument cluster-inc: trip computer, exterior temp gauge, oil level check, digital speedometer, audio status, reminder & malfunction messages, driver-programmable settings
- Night security illumination- Parcel net in front RH footwell- Pockets in all doors
- Pwr windows w/(1) touch express up & down- Rear-cabin courtesy light
- Retractable large-capacity dual cupholders- Rubber-studded aluminum pedals
- SmartKey infrared-remote-inc: opening trunk, opening & closing windows, panic alarm, fuel filler door, lock unlock all doors or drivers
- SmartKey system-inc: remote central locking system, anti-theft engine immobilizer, driver-programmable user-recognition features, drive away automatic locking
- Touch turn signals (flashes (3) times w/(1) touch)- Velour floor carpeting & floor mats

#### Exterior

### Option Packages

#### Factory Installed Packages

7-SPEED AUTOMATIC DRIVER-ADAPTIVE TRANSMISSION -inc: Touch Shift	\$1,390
6-DISC CD CHANGER	\$420
HEATED SEATS	\$680
IPOD INTEGRATION KIT	\$375
LIGHTING PKG -inc: bi-xenon headlamps, heated headlamp washers	\$790
PHONE EQUIPMENT -inc: Hands-free cellphone integration kit	\$765
PWR DRIVERS SEAT & STEERING COLUMN W/MEMORY	\$600
REAR SIDE AIRBAGS	\$385
SPLIT FOLDING REAR SEATS	\$290
SUNROOF PKG -inc: auto-dimming rearview mirror, auto-dimming drivers exterior mirror, rain sensor	\$1,790

- AMG front air dam w/front mesh air intakes- AMG side skirts & rear apron
- AMG trunk lid spoiler- Black grille w/chrome ribs & surround- Blue-tinted glass
- Chrome trim-inc: bumpers, rub strips, side window sills
- Dual aero-blade windshield wipers w/heated washer system- Dual pwr heated mirrors
- Halogen front foglamps- Nano-particle clearcoat technology paint
- Programmable daytime running lamps- Single red rear foglamp
- Variable-focus halogen headlamps-inc: polycarbonate lenses, light-sensing auto-on headlamps, automatic lamp substitution

## Safety

- 10-way adjustable front sport seats w/pwr height & recline, lumbar support
- AM/FM/weatherband stereo w/CD player-inc: MP3 capability, 6-speakers, automatic speed-sensitive volume adjustment, fiber-optic communication among components
- Anti-theft alarm system w/towaway protection
- Audible reminders-inc: fasten seat belt, release parking brake, headlamps on, remove ignition key
- Automatic dual-zone climate control-inc: dust/pollen filters, tunnel mode w/(1) touch closing of all windows, upper & lower temp sensors, dash-top diffuser vent
- Black Birdseye Maple interior trim
- Black leather-trimmed 3-spoke 4-way tilt & telescoping adjustable sport steering wheel-inc: raised thumbgrips, audio/multifunctional display controls
- Black/silver leather-trimmed sport shift knob- Courtesy lamps w/delay shutoff
- Cruise control- Dual front map lights- Dual illuminated visor vanity mirrors
- Dual seatback pockets
- Electrically heated rear window w/auto shut off based on time & exterior temp
- Entrance lamps in front doors- Folding rear armrest w/slide-out dual cupholders
- Front center armrest-inc: dual enclosed storage, 3-way lid, air vents at rear of console
- Head restraints at all positions- Illuminated 2-tier glovebox
- Illuminated carpeted cargo area
- Instrumentation-inc: fuel & coolant temp gauge, clock, Touch Shift/mode selection display, tachometer
- M-B Tex upholstery- Mercedes-Benz Maintenance System Plus display
- Multifunction display in instrument cluster-inc: trip computer, exterior temp gauge, oil level check, digital speedometer, audio status, reminder & malfunction messages, driver-programmable settings
- Night security illumination- Parcel net in front RH footwell- Pockets in all doors
- Pwr windows w/(1) touch express up & down- Rear-cabin courtesy light
- Retractable large-capacity dual cupholders- Rubber-studded aluminum pedals
- SmartKey infrared-remote-inc: opening trunk, opening & closing windows, panic alarm, fuel filler door, lock unlock all doors or drivers
- SmartKey system-inc: remote central locking system, anti-theft engine immobilizer, driver-programmable user-recognition features, drive away automatic locking
- Touch turn signals (flashes (3) times w/(1) touch)- Velour floor carpeting & floor mats

## Mechanical

- 6-speed fully synchronized manual transmission-inc: direct-action short-throw shifter
- 1-piston pwr solid rear disc brakes
- 17" x 7.5" front/17" x 8.5" rear 6-spoke aluminum wheels
- 2-piston pwr perforated & internally ventilated front disc brakes
- 2.5L DOHC SMPI 24-valve V6 engine
- 225/45ZR17 front/245/40ZR17 rear high-performance tires
- Anti-lock braking system w/brake assist- Dual chrome AMG exhaust tips
- Dual-stage resonance intake manifold- Electronic stability program (ESP)
- Enlarged front/rear stabilizer bar
- Independent 3-link front suspension-inc: coil springs over sport-tuned gas- pressurized shock absorbers, antidive geometry
- Independent 5-arm multilink rear suspension-inc: antisquat geometry, alignment control, separate coil springs, sport-tuned shock absorbers
- Lowered ride height
- Quick-ratio pwr rack & pinion steering w/integrated hydraulic damper- Rear wheel drive

wipers, glass sunroof, pwr rear sunshade, garage door opener

## TELE AID

\$820

## METALLIC PAINT

\$680

## LEATHER SEATING SURFACES

\$1,500

## Option Packages Total

\$10,485

Boutique Auto Sales

Boutique Auto Sales

View this car on our website at [boutiqueautosales.com/6544378](http://boutiqueautosales.com/6544378)

Website: [boutiqueautosales.com](http://boutiqueautosales.com)

Phone: 310-987-1212

Map: 5950 Laurel Canyon Blvd, North Hollywood, CA 91607

