



WWW.WACONIAADODGECHRYSLERJEEP.COM

952-442-2010



Computer generated image. Actual vehicle may differ.

2018 3500 4x4 Crew Cab 149.5 in. WB SRW Tradesman
VIN #: 3C63R3CL7JG375012 | Stock #: 17336



2018 Ram 3500 Tradesman

Our Price \$50,508

View this vehicle on our website at victoriaautosales.com

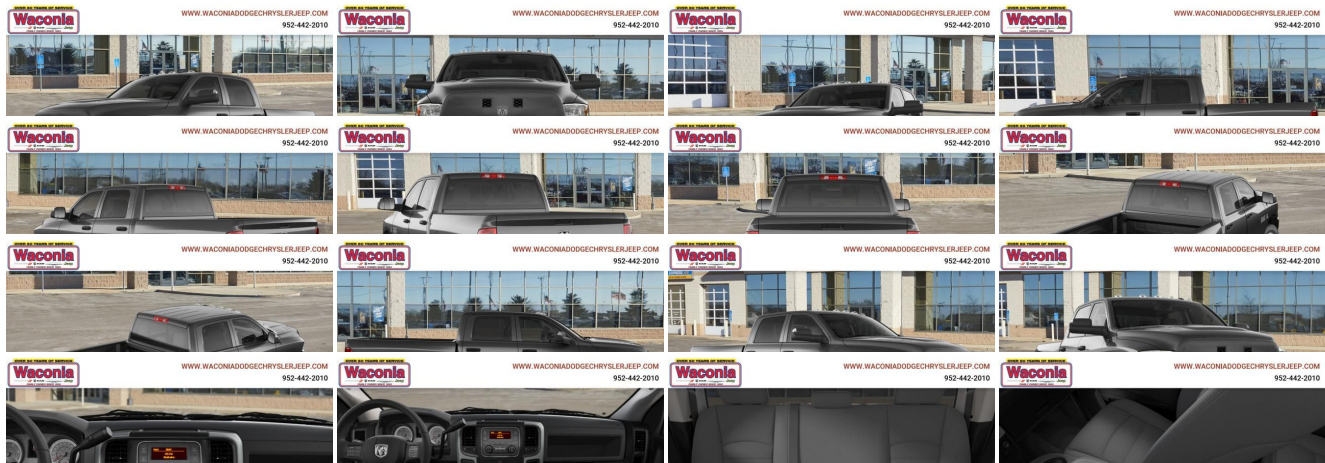
952-564-6165

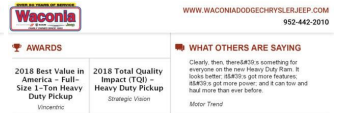
1400 Steiger Lake Ln, Victoria, MN 55386

Photos

Details

Contact





KEY FEATURES

POWERTRAIN: HEM 370hp 6.7L In-line 6 diesel direct injection engine, 6 speed automatic transmission, four-wheel drive. **SAFETY:** 6 airbags, stability control, ParkView rear camera, Bluetooth wireless phone connectivity, ParkSense rear parking sensor. **COMFORT:** 4-way manual front, front cloth seat upholstery, manual climate control. All rear folding seats, 6 person seating capacity. **CONVENIENCE:**

OPTIONAL EQUIPMENT

- Quick Order Package 2FA Tradesman
- Engine 6.7L I6 Cummins Turbo Diesel
- 180 Amp Alternator
- Transmission 6 Speed Automatic 68RFE
- 3.42 Axle Ratio
- GVWR: 11,700 lbs

AWARDS

2018 Best Value in America - Full-Size 1-Ton Heavy Duty Pickup
Vincennes

2018 Total Quality Impact (TQI) - Heavy Duty Pickup
Stoughton, Vermont

WHAT OTHERS ARE SAYING

Clearly, then, there's a lot to like about the new Heavy Duty Ram. It looks better, it's got more features, it's got more power, and it can tow and haul more than ever before.

Motor Trend

Specifications:

Year:	2018
VIN:	3C63R3CL7JG375012
Make:	Ram
Stock:	17336
Model/Trim:	3500 Tradesman
Condition:	New
Body:	Pickup Truck
Exterior:	Granite Crystal Met. Clear Coat
Engine:	ENGINE: 6.7L I6 CUMMINS TURBO DIESEL
Interior:	V9X8
Mileage:	18
Drivetrain:	4 Wheel Drive

Vehicle Description

Turbo Charged Engine, Bed Liner, 4x4, iPod/MP3 Input, Back-Up Camera, TRANSMISSION: 6-SPEED AUTOMATIC 68RFE... ENGINE: 6.7L I6 CUMMINS TURBO DIESEL, SNOW CHIEF GROUP. Granite Crystal Metallic Clearcoat exterior, Tradesman trim CLICK ME!

KEY FEATURES INCLUDE

4x4, Back-Up Camera, iPod/MP3 Input, Trailer Hitch MP3 Player, Privacy Glass, Child Safety Locks, Electronic Stability Control, Heated Mirrors.

OPTION PACKAGES

ENGINE: 6.7L I6 CUMMINS TURBO DIESEL Cummins Turbo Diesel Badge, Current Generation Engine Controller, GVWR: 11,700 lbs, Diesel Exhaust Brake, Selective Catalytic Reduction (Urea), 180 Amp Alternator, RAM Active Air, WHEEL TO WHEEL SIDE STEPS, POPULAR EQUIPMENT GROUP Remote Keyless Entry, Carpet Floor Covering, Front & Rear Floor Mats, SiriusXM Satellite Radio, For More Info, Call 800-643-2112, 1-Year SiriusXM Radio Service, SPRAY IN BEDLINER, SNOW CHIEF GROUP Transfer Case Skid Plate Shield, I/P Mounted Auxiliary Switches, Clearance Lamps, Tires: LT275/70R18E OWL On/Off Road, PARKSENSE REAR PARK ASSIST SYSTEM, RADIO: UCONNECT 3.0 Integrated Voice Command w/Bluetooth, TRANSMISSION: 6-SPEED AUTOMATIC 68RFE 3.42 Axle Ratio, Front Armrest w/Cupholders.

EXPERTS ARE SAYING

KBB.com's review says "When it comes to ability, Ram's heavy-duty 2018 2500/3500 HD pickup trucks have more than enough muscle to back up their bold and rugged appearance."

WHO WE ARE

At Waconia new and used Chrysler, Dodge, Ram and Jeep dealership. Has been a locally owned and operated family business since 1965. We strive to exceed your expectations. With a knowledgeable sales team, large inventory and everyday low prices, Waconia is the only place you will need to shop for a new or used car by Chrysler, Dodge, Ram or Jeep.

Please confirm the accuracy of the included equipment by calling us prior to purchase.

Installed Options	Option Packages
<p>Interior</p> <ul style="list-style-type: none"> - Power Rear Windows- HD Vinyl 40/20/40 Split Bench Seat - Power Door Locks w/Autolock Feature - Power 1st Row Windows w/Driver And Passenger 1-Touch Up/Down - 40/20/40 Split Bench Seat - 4-Way Driver Seat -inc: Manual Recline and Fore/Aft Movement - 4-Way Passenger Seat -inc: Manual Recline and Fore/Aft Movement - Front Facing Vinyl Rear Seat- Manual Tilt Steering Column - Gauges -inc: Speedometer, Odometer, Voltmeter, Oil Pressure, Engine Coolant Temp, Tachometer, Oil Temperature, Transmission Fluid Temp, Engine Hour Meter and Trip Odometer - Rear Folding Seat- Front Cupholder- Cruise Control w/Steering Wheel Controls - Manual Air Conditioning- HVAC -inc: Underseat Ducts and Console Ducts - Glove Box - Interior Trim -inc: Deluxe Sound Insulation, Metal-Look Instrument Panel Insert and Chrome/Metal-Look Interior Accents 	<p>Factory Installed Packages</p> <hr/> <p>ENGINE: 6.7L I6 CUMMINS TURBO DIESEL -inc: Cummins Turbo Diesel Badge, Current Generation Engine Controller, GVWR: 11,700 lbs, Diesel Exhaust Brake, Selective Catalytic Reduction (Urea), 180 Amp Alternator, RAM Active Air</p> <hr/> <p>Option Packages Total \$9,300</p> <hr/> <p style="text-align: right;">\$9,300</p>

Chrome/Metal-Look Interior Accents

- Full Cloth Headliner- Urethane Gear Shift Knob- Day-Night Rearview Mirror
- Rear View Auto Dim Mirror w/Display- 2 12V DC Power Outlets
- Fade-To-Off Interior Lighting- Full Vinyl/Rubber Floor Covering
- Cargo Area Concealed Storage- Pickup Cargo Box Lights- Mini Floor Console
- Instrument Panel Bin, Dashboard Storage, Driver / Passenger And Rear Door Bins and 2nd Row Underseat Storage
- Delayed Accessory Power- Systems Monitor- Analog Display
- Seats w/Vinyl Back Material- Front Center Armrest
- Manual Adjustable Front Head Restraints and Manual Adjustable Rear Head Restraints
- Sentry Key Engine Immobilizer

Exterior

- Wheels: 18" x 8.0" Steel- Tires: LT275/70R18E BSW AS
- Full-Size Spare Tire Stored Underbody w/Crankdown- Manual Tailgate/Rear Door Lock
- Regular Box Style- Steel Spare Wheel- Clearcoat Paint
- Black Front Bumper w/2 Tow Hooks- Black Rear Step Bumper
- Front Bumper Sight Shields- Black Side Windows Trim and Black Front Windshield Trim
- Black Door Handles- Manual Extendable Trailer Style Mirrors
- Black Power Side Mirrors w/Convex Spotter and Manual Folding
- Exterior Mirrors w/Supplemental Signals- Exterior Mirrors w/Heating Element
- Fixed Rear Window- Variable Intermittent Wipers- Deep Tinted Glass
- Fully Galvanized Steel Panels- Black Grille- Front License Plate Bracket
- Tailgate Rear Cargo Access
- Fully Automatic Aero-Composite Halogen Headlamps w/Delay-Off
- Cargo Lamp w/High Mount Stop Light- Exterior Mirrors Courtesy Lamps
- Vendor Painted Cargo Box Tracking

Safety

- Power Rear Windows- HD Vinyl 40/20/40 Split Bench Seat
- Power Door Locks w/Autolock Feature
- Power 1st Row Windows w/Driver And Passenger 1-Touch Up/Down
- 40/20/40 Split Bench Seat
- 4-Way Driver Seat -inc: Manual Recline and Fore/Aft Movement
- 4-Way Passenger Seat -inc: Manual Recline and Fore/Aft Movement
- Front Facing Vinyl Rear Seat- Manual Tilt Steering Column
- Gauges -inc: Speedometer, Odometer, Voltmeter, Oil Pressure, Engine Coolant Temp, Tachometer, Oil Temperature, Transmission Fluid Temp, Engine Hour Meter and Trip Odometer
- Rear Folding Seat- Front Cupholder- Cruise Control w/Steering Wheel Controls
- Manual Air Conditioning- HVAC -inc: Underseat Ducts and Console Ducts - Glove Box
- Interior Trim -inc: Deluxe Sound Insulation, Metal-Look Instrument Panel Insert and Chrome/Metal-Look Interior Accents
- Full Cloth Headliner- Urethane Gear Shift Knob- Day-Night Rearview Mirror
- Rear View Auto Dim Mirror w/Display- 2 12V DC Power Outlets
- Fade-To-Off Interior Lighting- Full Vinyl/Rubber Floor Covering
- Cargo Area Concealed Storage- Pickup Cargo Box Lights- Mini Floor Console
- Instrument Panel Bin, Dashboard Storage, Driver / Passenger And Rear Door Bins and 2nd Row Underseat Storage
- Delayed Accessory Power- Systems Monitor- Analog Display
- Seats w/Vinyl Back Material- Front Center Armrest
- Manual Adjustable Front Head Restraints and Manual Adjustable Rear Head Restraints
- Sentry Key Engine Immobilizer

Mechanical

- Engine: 5.7L V8 HEMI VVT- Transmission: 6-Speed Automatic 66RFE
- Transmission w/Driver Selectable Mode, Sequential Shift Control and Oil Cooler
- Class V Towing Equipment -inc: Harness, Hitch and Trailer Sway Control
- 3.73 Axle Ratio- GVWR: 10,700 lbs- 50 State Emissions- Manual Transfer Case
- Part-Time Four-Wheel Drive
- 730CCA Maintenance-Free Battery w/Run Down Protection- 160 Amp Alternator
- Electronically Controlled Throttle- Tip Start- 3970# Maximum Payload
- HD Shock Absorbers- Front Anti-Roll Bar- Hydraulic Power-Assist Steering
- Single Stainless Steel Exhaust- 31 Gal. Fuel Tank- Auto Locking Hubs
- Multi-Link Front Suspension w/Coil Springs- Leaf Rear Suspension w/Leaf Springs
- 4-Wheel Disc Brakes w/4-Wheel ABS, Front And Rear Vented Discs, Brake Assist and Hill Hold Control
- Mechanical Limited Slip Differential

[Empty box]

Victoria Auto Sales

View this car on our website at victoriaautosales.com/6543130

Website: victoriaautosales.com

Phone: [952-564-6165](tel:952-564-6165)

Map: [1400 Steiger Lake Ln, Victoria, MN 55386](#)

