



2007 Chevrolet Corvette Z06

Website Price \$27,995

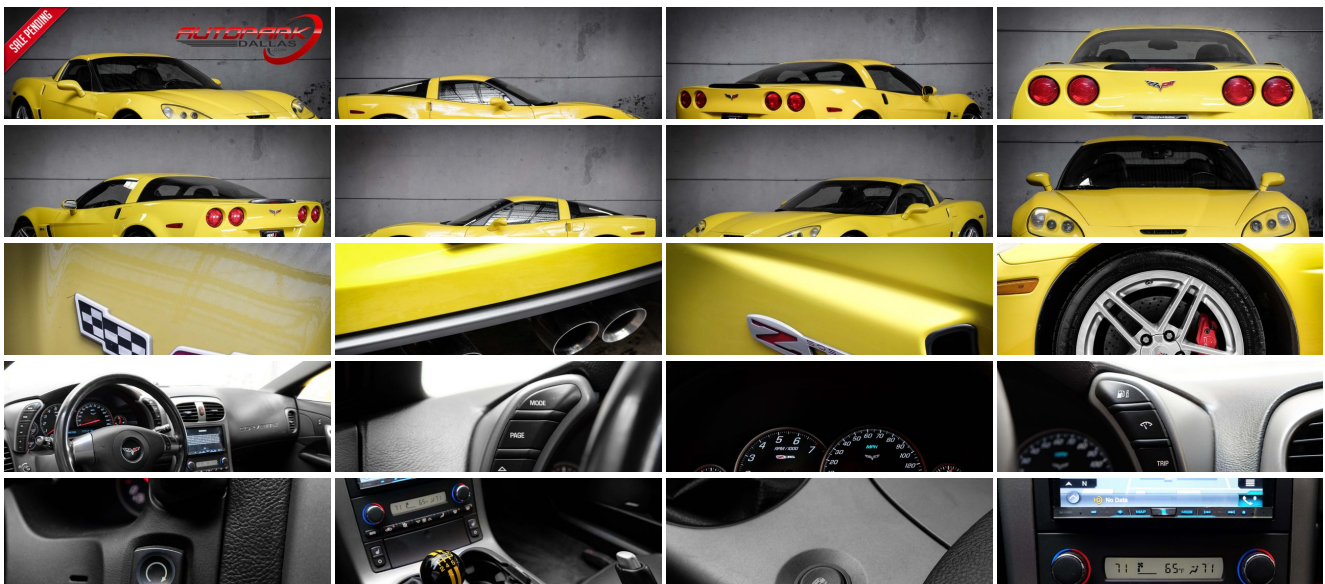
View this vehicle on our website at autoparkdallas.com



(214) 945-2601

2061 S Stemmons Fwy , Lewisville, TX 75067

- Photos
- Details
- Contact



Specifications:

Year:	2007
VIN:	1G1YY26E675108641
Make:	Chevrolet
Model/Trim:	Corvette Z06
Condition:	Pre-Owned
Body:	Coupe
Exterior:	Velocity Yellow Tintcoat
Engine:	ENGINE, 7.0L (427 CI) LS7 V8 SFI
Interior:	Ebony Leather
Transmission:	TRANSMISSION, 6-SPEED MANUAL, SHORT-THROW
Mileage:	77,713
Drivetrain:	Rear Wheel Drive
Economy:	City 16 / Highway 26

Vehicle Description

AutoPark Dallas is excited to offer you this 2007 Chevrolet Corvette Z06 for sale! Deep history has brought these stunning cars to life. On January 17, 1953, at New York's Waldorf Astoria hotel the first Corvette was introduced to America. Since then everybody knows the sleek and sporty look of the Corvette, the beauty behind everything put into these Chevy Corvettes is what keeps us in love. No matter if your an enthusiast or just want a fun ride that give you the sense of freedom, come check out this fantastic Corvette Z06 in our 16,000 Sq Ft Showroom located in Addison, TX. amongst our 60+ inventory!

2007 Chevrolet Corvette Z06

Clean CarFax!

LOW MILES!

New Continental Tires!

Velocity Yellow Tintcoat Exterior

Ebony Black Leather Interior

Pioneer Stereo System

Hands Free Bluetooth

Navigation

Heated Driver & Passenger Seats

Comfort Access Keyless Entry

Push Button Start

Cruise Control

Dual Climate Controls

7.0L LS7 V8 SFI Engine

6-Speed Manual Transmission

Rear Wheel Drive

Steering Wheel Mounted Controls

Rear-view Mirror w/ Compass

Driver Seat Memory

Bose Premium Audio System

Trunk Cargo Shade

Professionally Detailed!

Well Maintained!

AND SO MUCH MORE!!!

Financing is available!

Get pre-approved in no time by filling out a credit application on the finance section of our website!

We also offer different extended warranty options!

****All vehicles are priced for QUICK SALE. All REASONABLE offers will be considered****

AutoPark Dallas is dedicated to offering a level of customer service not usually found in the automobile industry. We take pride in continuing this service long after the vehicle has been delivered. We strive for excellence and make every effort to see that our customer is completely satisfied with every purchase. Referrals and Testimonials is what our business is built on.

Our extensive buying experience guarantees quality, pre-owned and new vehicles hand-picked from factory sources. Our love for the automobile and our dislike of traditional dealership tactics motivate us to provide the service we do!

Pre-purchase inspections are always welcomed! We also offer airport shuttles, amazing finance options, extended warranties and so much more!

We accept trade-ins, will BUY your car (modified or not) even if you don't buy one from us, and offer consignment deals to SELL your vehicle for you! For more information just give us a CALL or TEXT!!

#214-945-2601

Call or Text **Anytime!**

Se habla Español

WWW.AUTOPARKDALLAS.COM

Installed Options

Interior

- Mirror, inside rearview manual day/night, includes dual reading lights
- Seats, front bucket with perforated leather seating surfaces, Z06 embroidery and contrasting stitching
- Steering column, Tilt-Wheel, manual
- Theft-deterrent system, vehicle, push button start, immobilizer and audible visual alarm
- Air conditioning, dual-zone automatic climate control with individual climate settings for driver and right-front passenger and outside temperature display
- Air filtration system with pollen filter- Antenna, integral, hidden
- Audio system, AM/FM stereo with CD player and MP3 playback, seek-and-scan, digital clock, auto-tone control, Radio Data System (RDS), automatic volume and Theftlock. Includes (U66) 7-speaker system
- Console, floor, 2 covered cup holders, ashtray with cigar lighter, auxiliary power outlet and CD storage
- Cruise control, electronic with set and resume speed - Defogger, rear-window, electric
- Door locks, power programmable with lockout protection- Floor mats, carpeted
- Hatch release, push button open
- Head-Up Display, with dot-matrix readouts for street mode, track mode with g-meter, vehicle speed, engine rpm and readings from key gauges including water temperature and oil pressure
- Instrumentation, electronic analog with Driver Information Center and 2-line display
- Keyless Access, with push button start and 2 remote transmitters that enable automatic door unlock and open by touching door switch
- Lighting, interior with courtesy, cargo and glovebox- Oil life monitoring system

Option Packages

Factory Installed Packages

ENGINE, 7.0L (427 CI) LS7 V8 SFI
with dry sump oil system (505 hp [376.6 kW] @
6300 rpm, 470 lb-ft of torque [634.5 N-m] @
4800 rpm)

TRANSMISSION, 6-SPEED MANUAL, SHORT-THROW
(Includes (GU6) 3.42 axle ratio.)

AIR BAGS, FRONTAL AND SIDE-IMPACT, DRIVER AND FRONT
PASSENGER WITH PASSENGER SENSING SYSTEM

(Always use safety belts and the correct child restraints for your child's age and size. Even in vehicles equipped with air bags and the Passenger Sensing System, children are safer when properly secured in a rear seat. Never place a rear-facing infant restraint in the front seat of any vehicle with an active frontal air bag. See the vehicle's Owners Manual and child safety seat instructions for more safety information.)

MEMORY PACKAGE

- Seat adjuster, driver 6-way power- Steering wheel, 3-spoke leather-wrapped
- Storage, with lockable glovebox, center console and 2 rear compartments with covers (One compartment contains battery on Z06.)
- Tire Pressure Monitor System, air pressure sensors in each tire, pressure display in Driver Information Center
- Visors, driver and front passenger illuminated vanity mirrors
- Windows, power with driver and passenger Express-Down

Exterior

- Mirrors, outside heated power-adjustable, body-color- Daytime Running Lamps
- Fog lamps, front, integral in front fascia- Glass, Solar-Ray light-tinted
- Headlamps, dual projector lamps, Xenon, High-Intensity Discharge (HID) low-beam, tungsten-halogen high-beam with automatic exterior lamp control
- Wipers, front intermittent

Safety

- Mirror, inside rearview manual day/night, includes dual reading lights
- Seats, front bucket with perforated leather seating surfaces, Z06 embroidery and contrasting stitching
- Steering column, Tilt-Wheel, manual
- Theft-deterrent system, vehicle, push button start, immobilizer and audible visual alarm
- Air conditioning, dual-zone automatic climate control with individual climate settings for driver and right-front passenger and outside temperature display
- Air filtration system with pollen filter- Antenna, integral, hidden
- Audio system, AM/FM stereo with CD player and MP3 playback, seek-and-scan, digital clock, auto-tone control, Radio Data System (RDS), automatic volume and Theftlock. Includes (U66) 7-speaker system
- Console, floor, 2 covered cup holders, ashtray with cigar lighter, auxiliary power outlet and CD storage
- Cruise control, electronic with set and resume speed - Defogger, rear-window, electric
- Door locks, power programmable with lockout protection- Floor mats, carpeted
- Hatch release, push button open
- Head-Up Display, with dot-matrix readouts for street mode, track mode with g-meter, vehicle speed, engine rpm and readings from key gauges including water temperature and oil pressure
- Instrumentation, electronic analog with Driver Information Center and 2-line display
- Keyless Access, with push button start and 2 remote transmitters that enable automatic door unlock and open by touching door switch
- Lighting, interior with courtesy, cargo and glovebox- Oil life monitoring system
- Seat adjuster, driver 6-way power- Steering wheel, 3-spoke leather-wrapped
- Storage, with lockable glovebox, center console and 2 rear compartments with covers (One compartment contains battery on Z06.)
- Tire Pressure Monitor System, air pressure sensors in each tire, pressure display in Driver Information Center
- Visors, driver and front passenger illuminated vanity mirrors
- Windows, power with driver and passenger Express-Down

Mechanical

- Transmission, 6-speed manual, short-throw (Includes (GU6) 3.42 axle ratio.)
- Wheels, Z06 Silver-painted aluminum, 18" x 9.5" (45.7 cm x 24.1 cm) front and 19" x 12" (48.3 cm x 30.48 cm) rear
- Active handling, improves traction and enhances vehicle stability
- Brakes, 4-wheel antilock, 4-wheel disc- Engine access, rear opening hood
- Engine, 7.0L (427 ci) LS7 V8 SFI with dry sump oil system (505 hp [376.6 kW] @ 6300 rpm, 470 lb-ft of torque [634.5 N-m] @ 4800 rpm)
- Exhaust, dual mode aluminized stainless-steel with 4" polished stainless- steel tips
- Rear axle, 3.42 ratio, limited slip- Rear wheel drive
- Steering, power, speed-sensitive, rack-and-pinion
- Tires, front P275/35ZR18 Eagle F1 Supercar, extended mobility
- Tires, rear P325/30ZR19 Eagle F1 Supercar, extended mobility
- Traction control, all-speed
- Z06 Performance Package, 4-wheel independent, includes transverse composite springs, power steering, engine oil, axle and transmission coolers, stiffer springs and stabilizer bars, specific shock absorbers, larger brakes with 6- piston front and 4-piston rear cross-drilled rotors and specific tires

recalls 2 driver "presets" for 6-way power seat, outside mirrors and telescoping steering column

MIRROR, INSIDE REARVIEW AUTO-DIMMING WITH COMPASS
includes dual reading lights

STEERING WHEEL CONTROLS, MOUNTED AUDIO CONTROLS

UNIVERSAL HOME REMOTE

includes garage door opener, 3-channel programmable, located on driver visor

XM SATELLITE RADIO.

With a wide variety of programming, XM has something to excite any driver. Whether you want to be entertained or informed, to laugh, think, or sing, XM has the perfect channel for you-coast-to-coast, and in digital-quality sound. 3 trial months-no obligation.

EMISSIONS, FEDERAL REQUIREMENTS

SOLID PAINT

PREFERRED EQUIPMENT GROUP

includes (AJ7) Air bags, frontal and side-impact, (US9) Audio system, AM/FM stereo with 6-disc, in-dash CD changer and MP3 playback, (U2K) XM Satellite Radio, (UK3) Steering wheel controls, mounted audio controls, Enhanced Acoustic Package, Cargo net, in rear compartment area, (D42) Luggage shade, (AAB) Memory Package, (DD8) Mirror, inside rearview auto-dimming with compass, (KA1) Seats, heated driver and front passenger, (N37) Steering column, power telescopic with manual tilt, (UG1) Universal Home Remote, (DD0) Mirrors, outside heated power-adjustable and driver-side auto-dimming, body-color

\$3,485

AUDIO SYSTEM WITH NAVIGATION, AM/FM STEREO WITH CD PLAYER, MP3 PLAYBACK AND DVD-BASED TOUCH-SCREEN NAVIGATION

seek-and-scan, digital clock, auto-tone control, Radio Data System (RDS), automatic volume, TheftLock, 6.5" LCD color display and voice recognition.

\$3,640

HIGHWEAR NUANCE LEATHER SEAT TRIM

SEATS, FRONT BUCKET WITH PERFORATED LEATHER SEATING SURFACES

Z06 embroidery and contrasting stitching

WHEELS, Z06 POLISHED ALUMINUM

18" x 9.5" (45.7 cm x 24.1 cm) front and 19" x 12" (48.3 cm x 30.48 cm) rear

\$1,495

Option Packages Total

\$8,620

AUTOPARK

Dallas

Auto Park Dallas

View this car on our website at autoparkdallas.com/6542380

Website: autoparkdallas.com

Phone: (214) 945-2601

Map: 2061 S Stemmons Fwy, Lewisville, TX 75067

