

2014 Jeep Compass Sport

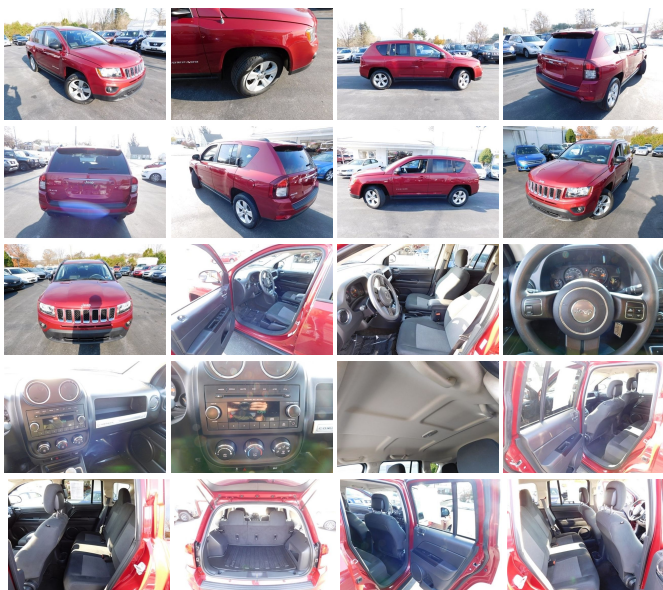
View this car on our website at oregonpikemotors.com/6538612/ebrochure



Our Price **\$12,995**

Specifications:

Year:	2014
VIN:	1C4NJDBB6ED567581
Make:	Jeep
Stock:	P8154J
Model/Trim:	Compass Sport
Condition:	Pre-Owned
Body:	SUV
Exterior:	MAROON
Engine:	ENGINE: 2.4L I4 DOHC 16V DUAL VVT
Interior:	GRAY
Mileage:	50,789
Drivetrain:	4 Wheel Drive
Economy:	City 20 / Highway 23



Meet our great looking 2014 Jeep Compass Sport 4X4 shown in glistening Deep Cherry Red Crystal Pearl Coat. Powered by a peppy 2.4 Liter 4 Cylinder that offers an impressive 172hp paired with a 6 Speed Automatic with Tip Start. This Four Wheel Drive scores near 28mpg on the open road plus offers a smooth ride and precise handling. With Compass, you have found your direction as you enjoy near 400 miles per tank driving further for any adventure. This sophisticated compact crossover continues to look more refined as it resembles Jeep's flagship, the Grand Cherokee and is a perfect vehicle for a driver like you that enjoys the Cherokee look but prefers this smaller size. Your adventurous side shows off with eye-catching 16-inch wheels and trail gripping tires.




Inside the Sport, you will be treated to soft-touch materials adding to your comfortable ride. Review our pictures and you will see tons of features that make this a must-have item. Features such as remote keyless entry, illuminated cup holders, and power locks, windows, and exterior mirrors are all standard.

Jeep prides itself on being a leader in safety and security for owners like you. Features like Electronic Stability Control and Advanced Front Airbags keep you and your family safe on and off road. Be proud of your ride and look no further! Get your bearings with this Compass. Print this page and call us Now... We Know You Will Enjoy Your Test Drive Towards Ownership!

Vehicle History Report : as Of 12/14/2018

 Snapshot

2014 JEEP COMPASS SPORT

	No accidents reported to CARFAX
	No damage reported to CARFAX
	3 Previous owners
	12 Service history records
	Types of owners: Rental, Personal
	50,789 Last reported odometer reading



FREE CARFAX Report

See the full CARFAX Report for additional information

*carfax Snapshot is a reflection of available information on the date the report was pulled. carfax is constantly being updated with new information and is subject to change at any time.

Our Location :



2014 Jeep Compass Sport

Oregon Pike Motors - 717-859-3600 - View this car on our website at oregonpikemotors.com/6538612/ebrochure

Installed Options

Interior

- 4-Way Driver Seat -inc: Manual Recline and Fore/Aft Movement
- 4-Way Passenger Seat -inc: Manual Recline and Fore/Aft Movement
- 60-40 Folding Bench Front Facing Fold Forward Seatback Cloth Rear Seat
- Manual Tilt Steering Column
- Gauges -inc: Speedometer, Odometer, Engine Coolant Temp, Tachometer and Trip Odometer
- Manual Rear Windows and Fixed 3rd Row Windows- Front Cupholder- Rear Cupholder
- 1 12V DC Power Outlet- Cruise Control w/Steering Wheel Controls
- HVAC -inc: Underseat Ducts- Manual Air Conditioning- Glove Box- Driver Foot Rest
- Full Cloth Headliner- Urethane Gear Shift Knob
- Interior Trim -inc: Chrome Instrument Panel Insert and Chrome Interior Accents
- Premium Cloth Bucket Seats - Driver And Passenger Visor Vanity Mirrors
- Day-Night Rearview Mirror
- Full Floor Console w/Covered Storage and 1 12V DC Power Outlet - Front Map Lights
- Fade-To-Off Interior Lighting
- Full Carpet Floor Covering -inc: Carpet Front And Rear Floor Mats - Carpet Floor Trim
- Cargo Space Lights- Instrument Panel Bin, Driver / Passenger And Rear Door Bins
- Delayed Accessory Power- Manual 1st Row Windows- Outside Temp Gauge
- Analog Display
- Manual Anti-Whiplash Adjustable Front Head Restraints and Fixed Rear Head Restraints
- Front Center Armrest w/Storage- Sentry Key Engine Immobilizer- Air Filtration

Exterior

- Wheels: 17" x 6.5" Aluminum - Tires: P215/60R17 BSW AS Touring
- Wheels w/Painted Accents- Steel Spare Wheel
- Compact Spare Tire Mounted Inside Under Cargo - Clearcoat Paint
- Body-Colored Rear Step Bumper w/Black Rub Strip/Fascia Accent

- Body-Colored Front Bumper w/Metal-Look Rub Strip/Fascia Accent
- Black Bodyside Cladding- Black Side Windows Trim and Black Front Windshield Trim
- Black Door Handles- Black Manual Side Mirrors w/Manual Folding
- Fixed Rear Window w/Fixed Interval Wiper and Defroster- Deep Tinted Glass
- Variable Intermittent Wipers- Fully Galvanized Steel Panels- Lip Spoiler
- Metal-Look Grille- Liftgate Rear Cargo Access- Manual Tailgate/Rear Door Lock
- Roof Rack Rails Only- Front Fog Lamps- LED Brakelights
- Aero-Composite Halogen Headlamps

Safety

- 4-Way Driver Seat -inc: Manual Recline and Fore/Aft Movement
- 4-Way Passenger Seat -inc: Manual Recline and Fore/Aft Movement
- 60-40 Folding Bench Front Facing Fold Forward Seatback Cloth Rear Seat
- Manual Tilt Steering Column
- Gauges -inc: Speedometer, Odometer, Engine Coolant Temp, Tachometer and Trip Odometer
- Manual Rear Windows and Fixed 3rd Row Windows- Front Cupholder- Rear Cupholder
- 1 12V DC Power Outlet- Cruise Control w/Steering Wheel Controls
- HVAC -inc: Underseat Ducts- Manual Air Conditioning- Glove Box- Driver Foot Rest
- Full Cloth Headliner- Urethane Gear Shift Knob
- Interior Trim -inc: Chrome Instrument Panel Insert and Chrome Interior Accents
- Premium Cloth Bucket Seats- Driver And Passenger Visor Vanity Mirrors
- Day-Night Rearview Mirror
- Full Floor Console w/Covered Storage and 1 12V DC Power Outlet - Front Map Lights
- Fade-To-Off Interior Lighting
- Full Carpet Floor Covering -inc: Carpet Front And Rear Floor Mats - Carpet Floor Trim
- Cargo Space Lights- Instrument Panel Bin, Driver / Passenger And Rear Door Bins
- Delayed Accessory Power- Manual 1st Row Windows- Outside Temp Gauge
- Analog Display
- Manual Anti-Whiplash Adjustable Front Head Restraints and Fixed Rear Head Restraints
- Front Center Armrest w/Storage- Sentry Key Engine Immobilizer- Air Filtration

Mechanical

- Engine: 2.4L I4 DOHC 16V Dual VVT - Transmission: 5-Speed Manual T355
- 4.12 Axle Ratio- GVWR: 4,575 lbs- Electronic Transfer Case
- Automatic Full-Time Four-Wheel Drive
- 60-Amp/Hr 525CCA Maintenance-Free Battery w/Run Down Protection
- 120 Amp Alternator- 925# Maximum Payload- Gas-Pressurized Shock Absorbers
- Front And Rear Anti-Roll Bars- Touring Suspension- Hydraulic Power-Assist Steering
- Single Stainless Steel Exhaust- 13.5 Gal. Fuel Tank- Permanent Locking Hubs
- Strut Front Suspension w/Coil Springs- Multi-Link Rear Suspension w/Coil Springs
- 4-Wheel Disc Brakes w/4-Wheel ABS, Front Vented Discs, Brake Assist and Hill Hold Control

Option Packages

Factory Installed Packages

-
ENGINE: 2.4L I4 DOHC 16V DUAL VVT

All vehicles are pre-owned. The e-Price is a cash price and excludes tax, title, license and \$50.00 doc fee. Prices subject to change. Contact our Sales Team for detailed information.