



## 2004 Pontiac GTO

**Our No-Haggle Price \$8,563**

**Book Retail Value \$10,995**

View this vehicle on our website at [leesburgautoimport.com](http://leesburgautoimport.com)

Leesburg Auto Import

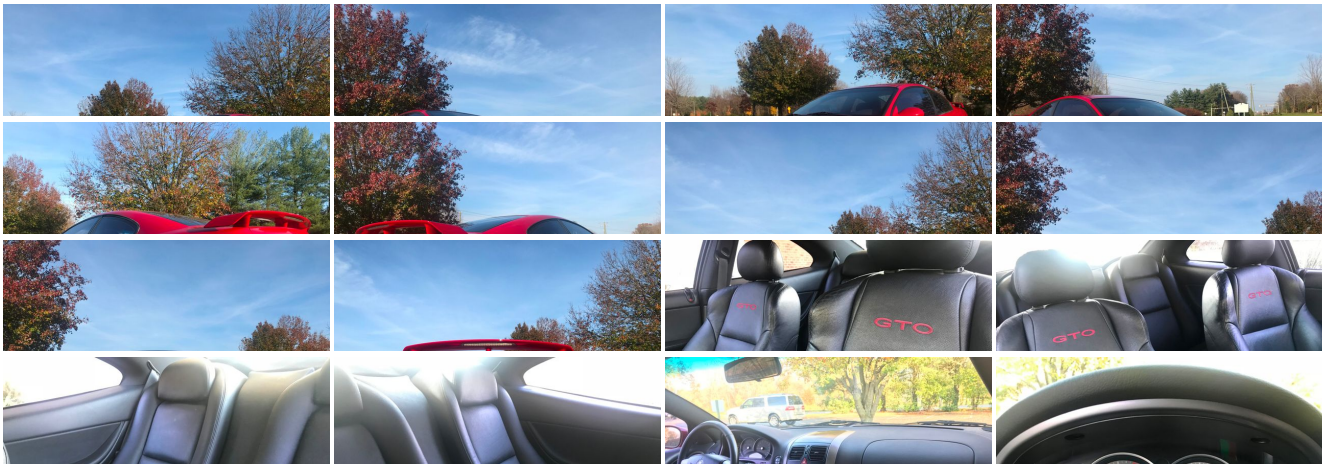
Toll Free: 1-866-249-5348, Local: 703-771-7600

2 Fairfax St SE , Leesburg, Virginia 20175

Photos

Details

Contact





# Specifications:

|                    |                              |
|--------------------|------------------------------|
| <b>Year:</b>       | 2004                         |
| <b>VIN:</b>        | 6G2VX12G84L313505            |
| <b>Make:</b>       | Pontiac                      |
| <b>Stock:</b>      | L313505                      |
| <b>Model/Trim:</b> | GTO                          |
| <b>Condition:</b>  | Pre-Owned                    |
| <b>Body:</b>       | Coupe                        |
| <b>Exterior:</b>   | RED                          |
| <b>Engine:</b>     | ENGINE, 5.7L V8 SFI ALUMINUM |
| <b>Interior:</b>   | Leather                      |
| <b>Mileage:</b>    | 116,839                      |
| <b>Drivetrain:</b> | Rear Wheel Drive             |
| <b>Economy:</b>    | City 16 / Highway 21         |

# Vehicle Description

Welcome to Leesburg Auto Import, the home of the best used cars in the east coast. We pride ourselves on our competitive and unbeatable prices. We buy cars and accept trade in.

| Installed Options  | Option Packages  |
|--|--|
| <p><b>Interior</b></p> <ul style="list-style-type: none"> <li>- Seats, front and rear sport bucket, leather</li> <li>- Door locks, power, includes lockout protection</li> <li>- Keyless entry, remote, programmable (Includes Trunk release, remote.)</li> <li>- Sound system, 6-disc CD changer in-dash, ETR AM/FM stereo with auto-tone control, 200 watt Blaupunkt stereo</li> <li>- Sound system feature, 10-speaker sound system</li> <li>- Seat adjuster, power driver and front passenger, 8-way</li> <li>- Seat adjuster, manual lumbar control, driver and front passenger</li> <li>- Seat headrest, front and height adjustable</li> <li>- Console, front, center, floor, includes storage compartment and accessory power outlet and twin cupholders</li> <li>- Floor mats, carpeted, front and rear</li> <li>- Steering wheel, adjustable, rake and telescope, steering wheel mounted radio controls, includes leather wrapped rim</li> <li>- Instrumentation, analog, backlit, includes speedometer, temperature, fuel and tachometer</li> <li>- Driver Information Center, includes average speed, season odometer, average mpg, elapsed time, trip odometer, trip time remaining, trip distance remaining, fuel used, overspeed, range and instant mpg.</li> <li>- Windows, power, includes driver and passenger express-down</li> <li>- Cruise control, electronic with set and resume speed, includes telltale in instrument panel cluster</li> <li>- Theft deterrent system, content protection- Air conditioning, manual single zone</li> <li>- Defogger, rear-window, electric, includes front and side window outlets, driver and front passenger</li> <li>- Antenna, in-glass, rear window- Map pockets, driver and front passenger seatbacks</li> <li>- Storage, door bins- Mirror, inside rearview</li> <li>- Visors, vanity mirror illuminated with cover, driver and front passenger</li> <li>- Shift knob, leather trimmed</li> <li>- Lighting, lamp interior roof, courtesy and dual reading, footwells, time delay on entry</li> </ul> | <p><b>Factory Installed Packages</b></p> <hr/> <p>ENGINE, 5.7L V8 SFI ALUMINUM</p> |
| <p><b>Exterior</b></p> <ul style="list-style-type: none"> <li>- Daytime running lamps- Spoiler, rear, aerodynamic- Door lock, cylinder driver side only</li> <li>- Headlamps, auto-on/off, programmable delay- Fog lamps, front</li> <li>- Mirrors, outside rearview, power, LH/RH remote control, electric, manual folding, body</li> </ul>   |  |

colored

- Wipers, intermittent, front, controlled-cycle- License plate cover, front

---

## Safety

- Seats, front and rear sport bucket, leather
- Door locks, power, includes lockout protection
- Keyless entry, remote, programmable (Includes Trunk release, remote.)
- Sound system, 6-disc CD changer in-dash, ETR AM/FM stereo with auto-tone control, 200 watt Blaupunkt stereo
- Sound system feature, 10-speaker sound system
- Seat adjuster, power driver and front passenger, 8-way
- Seat adjuster, manual lumbar control, driver and front passenger
- Seat headrest, front and height adjustable
- Console, front, center, floor, includes storage compartment and accessory power outlet and twin cupholders
- Floor mats, carpeted, front and rear
- Steering wheel, adjustable, rake and telescope, steering wheel mounted radio controls, includes leather wrapped rim
- Instrumentation, analog, backlit, includes speedometer, temperature, fuel and tachometer
- Driver Information Center, includes average speed, season odometer, average mpg, elapsed time, trip odometer, trip time remaining, trip distance remaining, fuel used, overspeed, range and instant mpg.
- Windows, power, includes driver and passenger express-down
- Cruise control, electronic with set and resume speed, includes telltale in instrument panel cluster
- Theft deterrent system, content protection- Air conditioning, manual single zone
- Defogger, rear-window, electric, includes front and side window outlets, driver and front passenger
- Antenna, in-glass, rear window- Map pockets, driver and front passenger seatbacks
- Storage, door bins- Mirror, inside rearview
- Visors, vanity mirror illuminated with cover, driver and front passenger
- Shift knob, leather trimmed
- Lighting, lamp interior roof, courtesy and dual reading, footwells, time delay on entry

---

## Mechanical

- Transmission, 4-speed automatic, electronically controlled with overdrive
- Traction Control with on/off switch- Brakes, 4-wheel antilock
- Engine, 5.7L V8 SFI aluminum
- Brake/transmission shift interlock, automatic transmission- Limited slip differential
- Drivetrain, rear-wheel drive
- Battery, Delco maintenance free, includes rundown protection
- Suspension, Sport, independent rear suspension- Tires, P245/45ZR17-95W, blackwall
- Tire, spare, compact- Wheels, 17" x 8" (43.2 cm), 5-spoke aluminum
- Steering, power, rack-and-pinion- Fuel capacity, approximate, 18 gallons (68 liters)
- Fuel filler door release, power- Exhaust, dual with bundled single side tips
- Exhaust outlets, chromed, dual tips

Price excludes \$599.00 processing fee, registration fees and state and local sales taxes. 3% surcharge will be added on all CC charges over \$500.00. Deposits are non-refundable. All our sales are based on first-come-first-serve policy. We work very hard to accurately describe our vehicles through text descriptions and elaborate photos. When you purchase a pre-owned vehicle it is not a new vehicle. Any used vehicle can have normal wear and blemishes. Please read the descriptions thoroughly and view all pictures.

Leesburg Auto Import

Leesburg Auto Import

View this car on our website at [leesburgautoimport.com/6537675](http://leesburgautoimport.com/6537675)

Website: [leesburgautoimport.com](http://leesburgautoimport.com)

Phone: Toll Free: 1-866-249-5348, Local: 703-771-7600

Map: [2 Fairfax St SE, Leesburg, Virginia 20175](#)

