



2003 DODGE RAM 3500 SLT DUALY 5.9L DIESEL 6-SPEED 31K MILES 4X4 MINT

Our Price \$37,900

View this vehicle on our website at njtruckking.com

King of Cars and Trucks

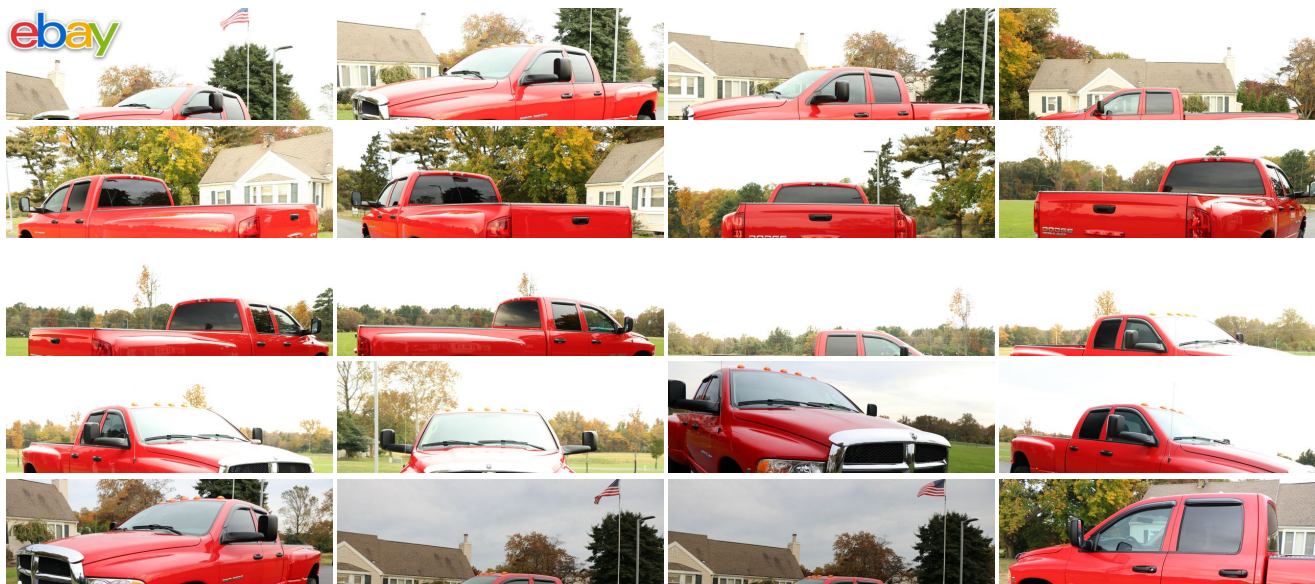
[856-693-3181](tel:856-693-3181)

1229 Broadway , Westville, New Jersey 08093

Photos

Details

Contact



Specifications:

Year:	2003
VIN:	3D7MU48C13G744451
Make:	DODGE RAM 3500 SLT
Model/Trim:	DUALY 5.9L DIESEL 6-SPEED 31K MILES 4X4 MINT
Condition:	Pre-Owned
Body:	Pickup Truck
Exterior:	Red
Engine:	5.9L (360) HO I6 CUMMINS TURBO DIESEL ENGINE
Interior:	Black
Mileage:	31,952
Drivetrain:	4 Wheel Drive

Vehicle Description

~~

THE HOLY GRAIL!

PRE-EMISSION CUMMINS 5.9L DIESEL MANUAL 6-SPEED

NICEST ONE YOU WILL FIND !! PERIOD....

2003 DODGE RAM 2500 4X4

~QUAD CAB~

SLT

5.9L CUMMINS TURBO DIESEL

6-SPEED MANUAL TRANSMISSION

(31,952 ORIGINAL / ACTUAL MILES)

RUST FREE

TIME CAPSULE

GARAGE KEPT

CLEAN CARFAX

NO PAINTWORK

METICULOUSLY MAINTAINED

BEST COLOR COMBO

MANY OPTIONS !

LEVELING KIT

TIRES LIKE NEW

DVD

BEDLINER

TINTED GLASS

TRAILER BRAKE CONTROL

ORIGINAL OWNERS MANUALS

THIS TRUCK IS IN LIKE NEW CONDITION !

YOU WILL NOT FIND A NICER PRE-EMISSION CUMMINS ANYWHERE!

WILL NOT LAST !

BEST OF THE BEST

DON'T SNOOZE AND LOSE BECAUSE YOU WILL NOT FIND ANOTHER LIKE IT !

TRUCK IS AS CLOSE TO NEW AS YOU WILL FIND !

\$37,900

Installed Options

Interior

- AM/FM stereo w/CD player-inc: CD changer control, (4) speakers - Air conditioning
- Cloth 40/20/40 split bench seat w/rear folding bench seat
- Passenger side visor vanity mirror- Pwr locks- 4-spoke steering wheel
- Day/night rearview mirror- Floor tunnel insulation- Front floor mats
- Front seat area floor carpeting- Glovebox lamp- Overhead console w/trip computer
- Passenger assist handle- Pwr windows w/driver one-touch
- Rear underseat compartment storage- Speed control- Tilt steering column

Exterior

- Black heated pwr exterior mirrors- Body-color upper front fascia- Bright front bumper
- Bright grille- Bright rear bumper w/step pads- Cargo lamp- Front air dam- Tinted glass
- Trailer tow wiring-inc: 4-pin connector- Variable speed intermittent windshield wipers

Safety

- AM/FM stereo w/CD player-inc: CD changer control, (4) speakers - Air conditioning
- Cloth 40/20/40 split bench seat w/rear folding bench seat
- Passenger side visor vanity mirror- Pwr locks- 4-spoke steering wheel
- Day/night rearview mirror- Floor tunnel insulation- Front floor mats
- Front seat area floor carpeting- Glovebox lamp- Overhead console w/trip computer
- Passenger assist handle- Pwr windows w/driver one-touch
- Rear underseat compartment storage- Speed control- Tilt steering column

Mechanical

- 17" x 6" steel wheels w/bright covers- 5-speed manual transmission w/OD
- 5.7L (350) SMPI V8 HEMI "Magnum" engine- Dual rear wheels
- Full size spare tire w/17" steel wheel, winch type carrier
- LT235/80R17 on/off-road SBR BSW tires- Pwr 4-wheel anti-lock disc brakes
- 11.5" rear axle ring gear diameter- 136-amp alternator- 3.73 axle ratio
- 35 gallon fuel tank- 700-amp battery- 8.0' pickup box
- 9.25" front axle ring gear diameter- Four wheel drive- Front stabilizer bar
- HD engine cooling- HD front/rear shock absorbers- Pwr steering

Option Packages

Factory Installed Packages

5.9L (360) HO I6 CUMMINS TURBO DIESEL ENGINE	
-inc: 750-amp battery, engine block heater	\$5,225

Option Packages Total	\$5,225
-----------------------	---------

King of Cars and Trucks

King of Cars and Trucks

View this car on our website at njtruckking.com/6534598

Website: njtruckking.com

Phone: [856-693-3181](tel:856-693-3181)

Map: [1229 Broadway, Westville, New Jersey 08093](#)

