

2004 Dodge Sprinter

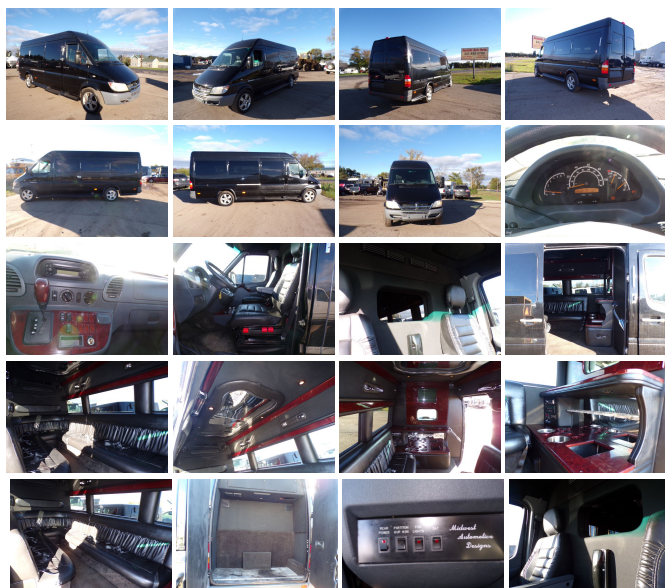
View this car on our website at eastsideautopartsmi.com/6534495/ebrochure



Our Price **\$14,995**

Specifications:

Year: 2004
VIN: WD2PD744745699434
Make: Dodge
Model/Trim: Sprinter
Condition: Pre-Owned
Body: Minivan/Van
Exterior: Black
Engine: 2.7L I5 MERCEDES TURBO DIESEL ENGINE
Interior: Gray Cloth
Mileage: 220,036
Drivetrain: Rear Wheel Drive

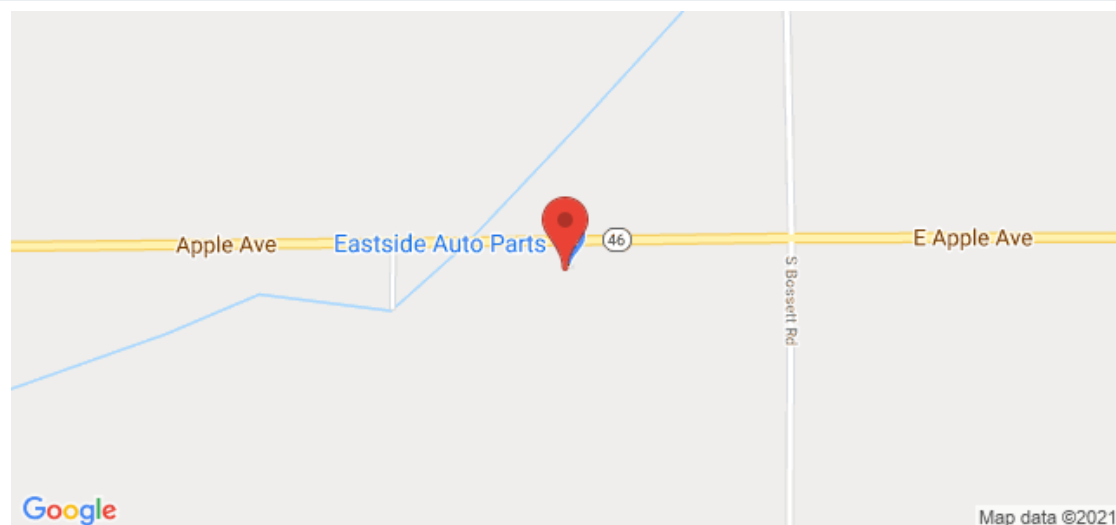


Dodge Sprinter Limo
Seats 11
Mercedes diesel
Auto
Air
Very nice limo bus
Runs and drives excellent
Built by Midwest Auto Motor Design.

2004 Dodge Sprinter

Eastside Auto - 231-853-5700 - View this car on our website at eastsideautopartsmi.com/6534495/ebrochure

Our Location :



2004 Dodge Sprinter

Eastside Auto - 231-853-5700 - View this car on our website at eastsideautopartsmi.com/6534495/ebrochure

Installed Options

Interior

- 12V auxiliary pwr outlet- 4-spoke steering wheel- AM/FM cassette radio w/2 speakers
- Air conditioning w/auto temp control- Cigar lighter- Cupholder in instrument panel
- Front ashtray- Instrumentation-inc: tachometer, outside temp gauge
- Lighting-inc: front dome lamp, cargo compartment side lamps
- Passenger seat storage bin- Reclining cloth front bucket seats w/headrests & armrests
- Rubber front floor covering- Warning lights-inc: headlamps on, driver seat belt

Exterior

- Front/rear mud flaps- Gray front/rear fascia- Halogen headlamps- High roof
- Manual exterior mirrors- Rear hinged door w/270 degree opening- Right-side sliding door

Safety

- 12V auxiliary pwr outlet- 4-spoke steering wheel- AM/FM cassette radio w/2 speakers
- Air conditioning w/auto temp control- Cigar lighter- Cupholder in instrument panel
- Front ashtray- Instrumentation-inc: tachometer, outside temp gauge
- Lighting-inc: front dome lamp, cargo compartment side lamps
- Passenger seat storage bin- Reclining cloth front bucket seats w/headrests & armrests
- Rubber front floor covering- Warning lights-inc: headlamps on, driver seat belt

Mechanical

- 100 amp battery- 158" wheel base- 16" x 6" steel wheels
- 2.7L I5 Mercedes turbo diesel engine- 26 gallon fuel tank- 3.72 axle ratio
- 4-wheel anti-lock brakes- 4-wheel hydraulic disc brakes
- 5-speed automatic transmission w/OD- 90 amp alternator- Auxiliary trans oil cooler
- Electronic stability program- Front/rear stabilizer bars
- P225/75R16 all-season SBR BSW tires- Pwr rack & pinion steering- Rear wheel drive
- Tool kit w/hydraulic jack- Underslung tire carrier w/full size spare tire/wheel

Option Packages

Factory Installed Packages

-
2.7L I5 MERCEDES TURBO DIESEL
ENGINE

Eastside Auto
eastsideautopartsmi.com
231-853-5700
10951 Apple Ave
Ravenna, MI 49451

© 2021 AutoRevo - All rights reserved. - Powered by AutoRevo