

# 2016 Ford F-150 XLT ecoboost

Sales Department (928) 763-1633

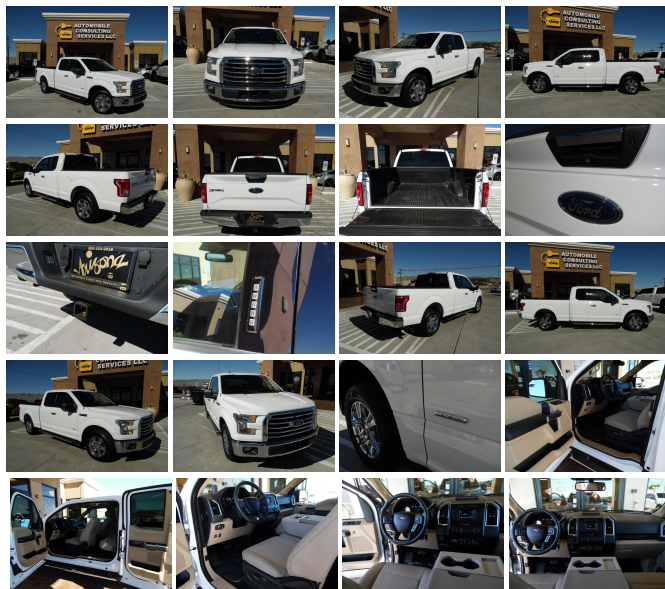
View this car on our website at [automobileconsultingservices.com/6533350/ebrochure](http://automobileconsultingservices.com/6533350/ebrochure)



Our Price **\$26,995**

## Specifications:

**Year:** 2016  
**VIN:** 1FTEX1CP0GKF20200  
**Make:** Ford  
**Stock:** 108548  
**Model/Trim:** F-150 XLT ecoboost  
**Condition:** Pre-Owned  
**Body:** Pickup Truck  
**Exterior:** Oxford White  
**Engine:** ENGINE: 2.7L V6 ECOBOOST  
**Interior:** Medium Light Camel Cloth  
**Transmission:** TRANSMISSION: ELECTRONIC 6-SPEED AUTOMATIC  
**Mileage:** 25,233  
**Drivetrain:** Rear Wheel Drive  
**Economy:** City 18 / Highway 25



2016 Ford F-150 XLT ecoboost

Automobile Consulting Services - (928) 763-1633 - View this car on our website at [automobileconsultingservices.com/6533350/ebrochure](http://automobileconsultingservices.com/6533350/ebrochure)

## Vehicle History Report : as Of 12/12/2018



### Snapshot

2016 FORD F150

	No accidents reported to CARFAX
	No damage reported to CARFAX
	CARFAX 1-Owner vehicle
	3 Service history records
	Commercial vehicle
	25,233 Last reported odometer reading



**FREE CARFAX Report**

See the full CARFAX Report for additional information

\*carfax Snapshot is a reflection of available information on the date the report was pulled. carfax is constantly being updated with new information and is subject to change at any time.

## Our Location :



2016 Ford F-150 XLT ecoboost

Automobile Consulting Services - (928) 763-1633 - View this car on our website at [automobileconsultingservices.com/6533350/ebrochure](http://automobileconsultingservices.com/6533350/ebrochure)

## Installed Options

### Interior

- 2 Seatback Storage Pockets- 3 12V DC Power Outlets
- 4-Way Driver Seat -inc: Manual Recline and Fore/Aft Movement
- 4-Way Passenger Seat -inc: Manual Recline and Fore/Aft Movement
- 60-40 Folding Split-Bench Front Facing Fold-Up Cushion Rear Seat - Analog Display
- Cloth 40/20/40 Front Seat -inc: 4-way adjustable driver/passenger headrests, manual driver/passenger lumbar and armrest w/storage
- Compass- Cruise Control w/Steering Wheel Controls- Day-Night Rearview Mirror
- Delayed Accessory Power- Driver And Passenger Visor Vanity Mirrors
- Fade-To-Off Interior Lighting- Front Cupholder- Front Map Lights
- Full Carpet Floor Covering -inc: Carpet Front And Rear Floor Mats - Full Cloth Headliner
- Gauges -inc: Speedometer, Odometer, Voltmeter, Oil Pressure, Engine Coolant Temp, Tachometer, Transmission Fluid Temp and Trip Odometer
- Glove Box- HVAC -inc: Underseat Ducts
- Instrument Panel Bin, Dashboard Storage, Driver / Passenger And Rear Door Bins and 1st Row Underseat Storage
- Interior Trim -inc: Metal-Look Instrument Panel Insert, Cabback Insulator and Chrome Interior Accents
- Keypad- Manual/Adjustable Rear Head Restraints- Manual Air Conditioning
- Manual Tilt/Telescoping Steering Column- Outside Temp Gauge- Perimeter Alarm
- Pickup Cargo Box Lights
- Power 1st Row Windows w/Driver And Passenger 1-Touch Up/Down
- Power Door Locks w/Autolock Feature- Power Rear Windows- Rear Cupholder
- Remote Keyless Entry w/Integrated Key Transmitter, Illuminated Entry and Panic Button
- Securilock Anti-Theft Ignition (pats) Engine Immobilizer- Urethane Gear Shift Knob

### Exterior

- Aluminum Panels- Black Door Handles
- Black Power Side Mirrors w/Convex Spotter and Manual Folding

- Black Side Windows Trim and Black Front Windshield Trim
- Cargo Lamp w/High Mount Stop Light
- Chrome Front Bumper w/Body-Colored Rub Strip/Fascia Accent- Chrome Grille
- Chrome Rear Step Bumper- Clearcoat Paint- Deep Tinted Glass- Fixed Rear Window
- Front Fog Lamps- Full-Size Spare Tire Stored Underbody w/Crankdown
- Fully Automatic Aero-Composite Halogen Daytime Running Lights Preference Setting Headlamps w/Delay-Off
- Perimeter/Approach Lights- Regular Box Style- Reverse Opening Rear Doors
- Steel Spare Wheel- Tailgate Rear Cargo Access
- Tailgate/Rear Door Lock Included w/Power Door Locks - Tires: P245/70R17 BSW A/S
- Variable Intermittent Wipers- Wheels: 17" Silver Painted Aluminum

## Safety

- 2 Seatback Storage Pockets- 3 12V DC Power Outlets
- 4-Way Driver Seat -inc: Manual Recline and Fore/Aft Movement
- 4-Way Passenger Seat -inc: Manual Recline and Fore/Aft Movement
- 60-40 Folding Split-Bench Front Facing Fold-Up Cushion Rear Seat - Analog Display
- Cloth 40/20/40 Front Seat -inc: 4-way adjustable driver/passenger headrests, manual driver/passenger lumbar and armrest w/storage
- Compass- Cruise Control w/Steering Wheel Controls- Day-Night Rearview Mirror
- Delayed Accessory Power- Driver And Passenger Visor Vanity Mirrors
- Fade-To-Off Interior Lighting- Front Cupholder- Front Map Lights
- Full Carpet Floor Covering -inc: Carpet Front And Rear Floor Mats - Full Cloth Headliner
- Gauges -inc: Speedometer, Odometer, Voltmeter, Oil Pressure, Engine Coolant Temp, Tachometer, Transmission Fluid Temp and Trip Odometer
- Glove Box- HVAC -inc: Underseat Ducts
- Instrument Panel Bin, Dashboard Storage, Driver / Passenger And Rear Door Bins and 1st Row Underseat Storage
- Interior Trim -inc: Metal-Look Instrument Panel Insert, Cabback Insulator and Chrome Interior Accents
- Keypad- Manual Adjustable Rear Head Restraints- Manual Air Conditioning
- Manual Tilt/Telescoping Steering Column- Outside Temp Gauge- Perimeter Alarm
- Pickup Cargo Box Lights
- Power 1st Row Windows w/Driver And Passenger 1-Touch Up/Down
- Power Door Locks w/Autolock Feature- Power Rear Windows- Rear Cupholder
- Remote Keyless Entry w/Integrated Key Transmitter, Illuminated Entry and Panic Button
- Securilock Anti-Theft Ignition (pats) Engine Immobilizer- Urethane Gear Shift Knob

## Mechanical

- 1660# Maximum Payload- 200 Amp Alternator- 23 Gal. Fuel Tank- 3.55 Axle Ratio
- 4-Wheel Disc Brakes w/4-Wheel ABS, Front And Rear Vented Discs, Brake Assist, Hill Hold Control and Electric Parking Brake
- 70-Amp/Hr 610CCA Maintenance-Free Battery w/Run Down Protection
- Double Wishbone Front Suspension w/Coil Springs
- Electric Power-Assist Speed-Sensing Steering- Engine: 3.5L V6 Ti-VCT FFV
- Front Anti-Roll Bar- GVWR: 6,100 lbs Payload Package
- Gas-Pressurized Shock Absorbers- Leaf Rear Suspension w/Leaf Springs
- Rear-Wheel Drive- Single Stainless Steel Exhaust
- Towing Equipment -inc: Harness and Trailer Sway Control
- Transmission: Electronic 6-Speed Automatic -inc: tow/haul mode

## Option Packages

### Factory Installed Packages

ENGINE: 2.7L V6 ECOBOOST  
 -inc: auto start/stop technology system, 3.31 Axle Ratio, GVWR: 6,250 lbs Payload Package \$795

TRANSMISSION: ELECTRONIC 6-SPEED AUTOMATIC  
 -inc: tow/haul mode

OXFORD WHITE

Option Packages Total

Option Packages Total  
\$795

All vehicles are pre-owned. The e-Price is a cash price and excludes tax, title, license and \$50.00 doc fee. Prices subject to change. Contact our Sales Team for detailed information.

---

Automobile Consulting Services  
[automobileconsultingservices.com](http://automobileconsultingservices.com)  
(928) 763-1633  
2691 S Miracle Mile  
Bullhead City, AZ 86442-6452  
© 2018 AutoRevo - All rights reserved. - Powered by AutoRevo