



## 2004 Chevrolet Corvette Commemorative Edition

**Website Price \$16,495**

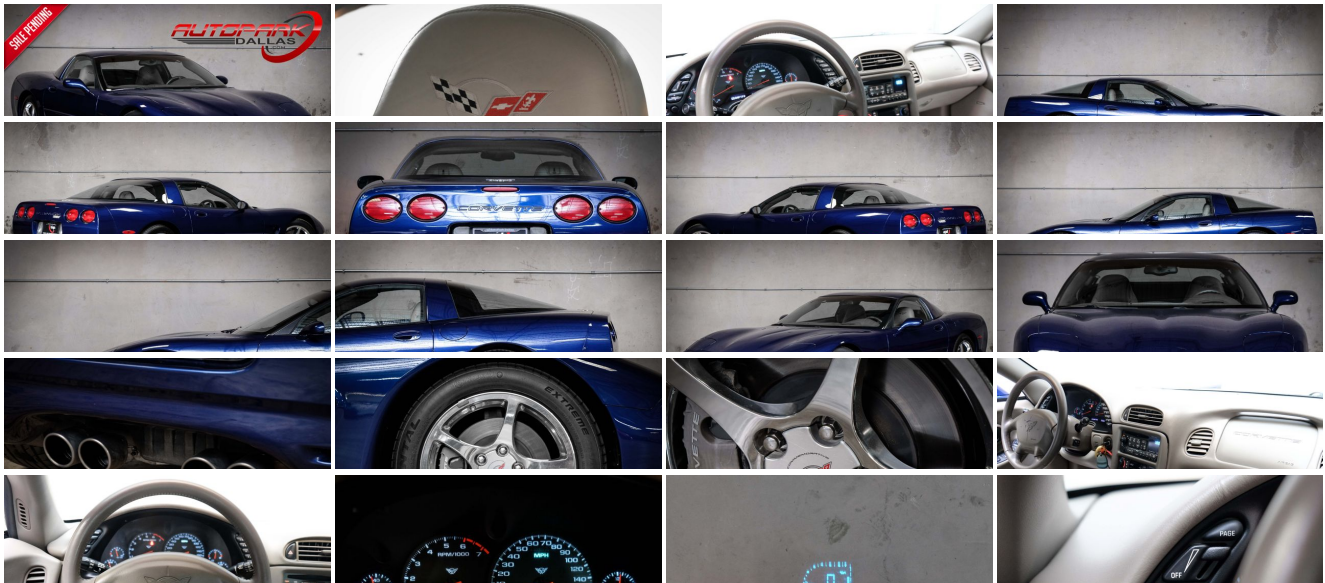
View this vehicle on our website at [autoparkdallas.com](http://autoparkdallas.com)



(214) 945-2601

2061 S Stemmons Fwy , Lewisville, TX 75067

Photos  
Details  
Contact



## Specifications:

<b>Year:</b>	2004
<b>VIN:</b>	<a href="#">1G1YY22G445116238</a>
<b>Make:</b>	Chevrolet
<b>Model/Trim:</b>	Corvette Commemorative Edition
<b>Condition:</b>	Pre-Owned
<b>Body:</b>	Coupe
<b>Exterior:</b>	LeMans Blue Metallic
<b>Engine:</b>	ENGINE, 5.7L LS1 V8 SFI
<b>Interior:</b>	Shale Commemorative Leather
<b>Transmission:</b>	TRANSMISSION, 6-SPEED MANUAL
<b>Mileage:</b>	70,320
<b>Drivetrain:</b>	Rear Wheel Drive
<b>Economy:</b>	City 18 / Highway 25

## Vehicle Description

AutoPark Dallas is excited to offer you this 2004 Chevrolet Corvette Commemorative Edition for sale! Deep history has brought these stunning cars to life. On January 17, 1953, at New York's Waldorf Astoria hotel the first Corvette was introduced to America. Since then everybody knows the sleek and sporty look of the Corvette, the beauty behind everything put into these Chevy Corvettes is what keeps us in love. No matter if your an enthusiast or just want a fun ride that give you the sense of freedom, come check out this fantastic Corvette in our 16,000 Sq Ft Showroom located in Addison, TX. amongst our 60+ inventory!

---

2004 Chevrolet Corvette

**\*Commemorative Edition!\***

**\*1 OWNER!\***

**\*Clean CarFax!\***

**\*2 Set of Keys!\***

**\*LOW MILES!\***

LeMans Blue Metallic Exterior

Removeable Glass & Color Matching Roof

Shale Commemorative Leather Interior

**\*Memory Package!\***

**\*Roof Package!\***

Heads-Up Display

Dual Climate Controls

Driver Seat Memory

Bose Premium Audio System

5.7L LS1 V8 SFI Engine

6-Speed Manual Transmission

Rear Wheel Drive

Professionally Detailed!

Well Maintained!

AMAZING CONDITION!

AND SO MUCH MORE!!!

---

# Financing is available!

Get pre-approved in no time by filling out a credit application on the finance section of our website!

We also offer different extended warranty options!

**\*\*All vehicles are priced for QUICK SALE. All REASONABLE offers will be considered\*\***

AutoPark Dallas is dedicated to offering a level of customer service not usually found in the automobile industry. We take pride in continuing this service long after the vehicle has been delivered. We strive for excellence and make every effort to see that our customer is completely satisfied with every purchase. Referrals and Testimonials is what our business is built on.

Our extensive buying experience guarantees quality, pre-owned and new vehicles hand-picked from factory sources. Our love for the automobile and our dislike of traditional dealership tactics motivate us to provide the service we do!

Pre-purchase inspections are always welcomed! We also offer airport shuttles, amazing finance options, extended warranties and so much more!

We accept trade-ins, will BUY your car (modified or not) even if you don't buy one from us, and offer consignment deals to SELL your vehicle for you! For more information just give us a CALL or TEXT!!

## #214-945-2601

## Call or Text **Anytime!**

## Se habla Español

## WWW.AUTOPARKDALLAS.COM

### Installed Options

#### Interior

- Door locks, power, programmable, includes lockout protection
- Keyless entry, remote, includes panic button and trunk/hatch release
- Seats, front Sport bucket with leather seating surfaces, includes lateral support and back angle adjustment, adjustable lumbar and side bolsters
- Sound system, ETR AM/FM stereo with CD player, includes seek-and-scan, digital clock, auto-tone control, speed-compensated volume and TheftLock
- Steering column, Tilt-Wheel
- Air conditioning, dual-zone, automatic, includes individual climate settings for driver and right front passenger, automatic climate control and outside temperature display
- Antenna, integral, front and rear - Cargo convenience net, in rear compartment
- Console, floor, lockable, includes integral cupholder, ashtray, coin holder, auxiliary power outlet and cassette/CD storage
- Cruise control, electronic with set and resume speed - Defogger, rear-window, electric
- Floor mats, carpeted
- Instrumentation, analog, electronic, includes Driver Information Center
- Lighting, interior, courtesy, cargo console and glovebox - Luggage shade
- Mirror, inside rearview, manual day/night, includes dual reading lights
- Seat adjuster, power, driver 6-way - Seat adjuster, power, front passenger 6-way
- Sound system feature, Bose speaker and amplifier system
- Steering wheel, leather-wrapped
- Storage, includes lockable glovebox, center console and 3 rear compartments with covers
- Theft-deterrent system, PASS-Key II, includes horn alarm
- Tire Pressure Monitoring System
- Visors, illuminated vanity mirrors, driver and front passenger
- Windows, power, includes driver and passenger express-down

#### Exterior

- Daytime running lamps- Hatch, rear, full-framed with interior remote release

### Option Packages

#### Factory Installed Packages

##### ENGINE, 5.7L LS1 V8 SFI

(350 HP [261.0 kW] @ 5200 rpm, 375 lb.-ft. [506.2 N-m] @ 4400 rpm for manual transmission, 360 lb.-ft. [486.0 N-m] @ 4000 rpm for automatic transmission)

##### TRANSMISSION, 6-SPEED MANUAL

\$915

##### AXLE, 3.42 RATIO, LIMITED SLIP

(Included and only available with (MN6) Transmission, 6-speed manual.)

##### COMMEMORATIVE EDITION

includes (19U) LeMans Blue exterior, Shale interior, special badges, special seat embroidery and (QF5) Wheels, high-polished, 5-spoke aluminum with specific center cap

##### HEAD-UP DISPLAY

includes digital readouts for vehicle speed, engine rpm, a performance up-shift guide for the 6-speed manual transmission, and readings from key gauges including water temperature, oil pressure and fuel levels

##### MEMORY PACKAGE

3 driver settings, remembers "presets" for 6-way

- Roof panel, removable, 1-piece, body-color
- Body structure, uniframe, includes corrosion-resistant coating
- Fog lamps, front, integral in fascia- Glass, Solar-Ray light tinted
- Headlamps, halogen, power-operated retractable
- Mirrors, outside rearview, power, heated, body-color- Paint, basecoat/clearcoat
- Wipers, intermittent, front

### Safety

- Door locks, power, programmable, includes lockout protection
- Keyless entry, remote, includes panic button and trunk/hatch release
- Seats, front Sport bucket with leather seating surfaces, includes lateral support and back angle adjustment, adjustable lumbar and side bolsters
- Sound system, ETR AM/FM stereo with CD player, includes seek-and-scan, digital clock, auto-tone control, speed-compensated volume and TheftLock
- Steering column, Tilt-Wheel
- Air conditioning, dual-zone, automatic, includes individual climate settings for driver and right front passenger, automatic climate control and outside temperature display
- Antenna, integral, front and rear- Cargo convenience net, in rear compartment
- Console, floor, lockable, includes integral cupholder, ashtray, coin holder, auxiliary power outlet and cassette/CD storage
- Cruise control, electronic with set and resume speed - Defogger, rear-window, electric
- Floor mats, carpeted
- Instrumentation, analog, electronic, includes Driver Information Center
- Lighting, interior, courtesy, cargo console and glovebox- Luggage shade
- Mirror, inside rearview, manual day/night, includes dual reading lights
- Seat adjuster, power, driver 6-way- Seat adjuster, power, front passenger 6-way
- Sound system feature, Bose speaker and amplifier system
- Steering wheel, leather-wrapped
- Storage, includes lockable glovebox, center console and 3 rear compartments with covers
- Theft-deterrent system, PASS-Key II, includes horn alarm
- Tire Pressure Monitoring System
- Visors, illuminated vanity mirrors, driver and front passenger
- Windows, power, includes driver and passenger express-down

### Mechanical

- Active handling, improves traction and enhances vehicle stability
- Axle, 2.73 ratio, limited slip (Standard with (MX0) Transmission, 4-speed automatic)
- Brakes, 4-wheel antilock, 4-wheel disc- Traction control, all-speed
- Transmission, 4-speed automatic, electronically controlled with overdrive
- 18.0 gallon fuel tank- Engine access, rear opening hood, includes underhood lamp
- Engine, 5.7L LS1 V8 SFI (350 HP [261.0 kW] @ 5200 rpm, 375 lb.-ft. [506.2 N-m] @ 4400 rpm for manual transmission, 360 lb.-ft. [486.0 N-m] @ 4000 rpm for automatic transmission)
- Exhaust outlets, chrome-plated tips
- Exhaust, stainless-steel, aluminized stainless-steel at rear of catalytic converter
- Rear wheel drive
- Suspension, 4-wheel independent, includes transverse fiberglass leaf springs
- Tires, front P245/45ZR17, extended mobility, Eagle F1
- Tires, rear P275/40ZR18, extended mobility, Eagle F1
- Wheels, 5-spoke aluminum, 17" x 8.5" (43.2 cm x 21.6 cm), front and 18" x 9.5" (45.7 cm x 24.1 cm), rear

power seat, outside mirrors, climate control, radio presets and telescoping steering column, if equipped.

MOLDINGS, BODYSIDE, BODY-COLOR \$150

ROOF PACKAGE \$1,400  
includes (CF7) Roof panel, 1-piece, body-color and (CC3) Roof panel, 1-piece, translucent

SOUND SYSTEM, 12-DISC CD CHANGER, REMOTE \$600

STEERING COLUMN, POWER TELESCOPIC  
includes manual Tilt-Wheel

### EMISSIONS, FEDERAL REQUIREMENTS

EXTRA COST PAINT \$750

PREFERRED EQUIPMENT GROUP \$3,700  
includes (UV6) Head-Up Display, (AAB) Memory Package, (DD0) Mirrors, inside rearview and driver outside rearview, electrochromic (light-sensitive auto dimming), (N37) Steering column, power telescopic, (Z15) Commemorative Edition, (T82) Twilight Sentinel, headlamp control system, (QF5) Wheels, high-polished, 5-spoke aluminum

SOUND SYSTEM, ETR AM/FM STEREO WITH CD PLAYER  
includes seek-and-scan, digital clock, auto-tone control, speed-compensated volume and TheftLock

### HIGHWEAR NUANCE LEATHER SEAT TRIM

SEATS, FRONT SPORT BUCKET WITH LEATHER SEATING SURFACES  
includes lateral support and back angle adjustment, adjustable lumbar and side bolsters

WHEELS, HIGH-POLISHED, 5-SPOKE ALUMINUM, 17" x 8.5" (43.2 CM x 21.6 CM), FRONT AND 18" x 9.5" (45.7 CM x 24.1 CM), REAR \$1,295  
(with 1SC Preferred Equipment Group, Included with (Z15) Commemorative Edition. Includes specific center caps with special logo.)

Option Packages Total \$8,810



View this car on our website at [autoparkdallas.com/6531969](http://autoparkdallas.com/6531969)

Website: [autoparkdallas.com](http://autoparkdallas.com)

Phone: (214) 945-2601

Map: 2061 S Stemmons Fwy, Lewisville, TX 75067

