



2012 Jeep Grand Cherokee Overland Summit

Our No-Haggle Price \$15,987

Book Retail Value \$19,575

View this vehicle on our website at leesburgautoimport.com

Leesburg Auto Import

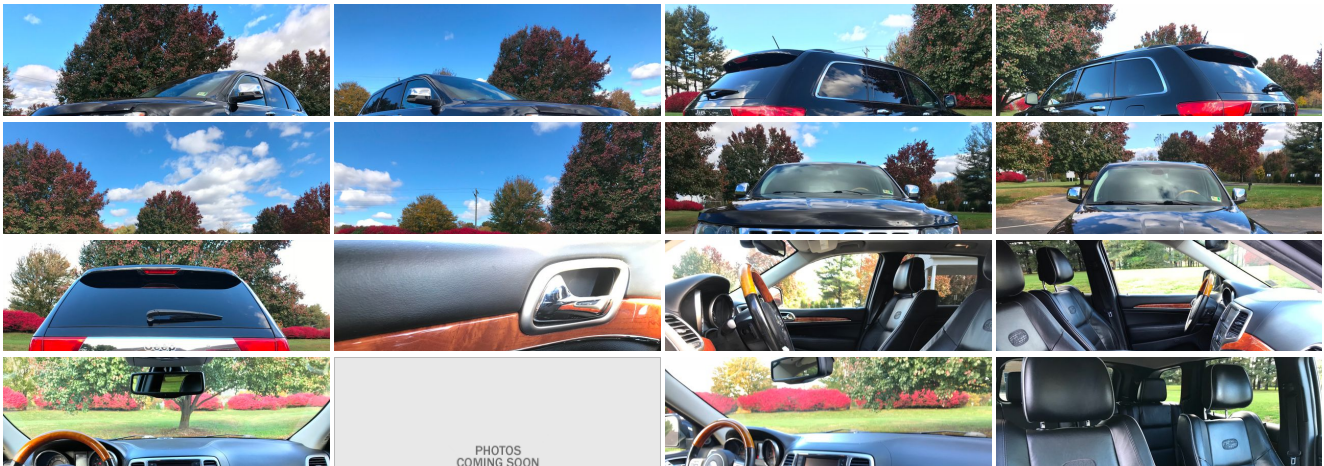
Toll Free: 1-866-249-5348, Local: 703-771-7600

2 Fairfax St SE , Leesburg, Virginia 20175

Photos

Details

Contact





Specifications:

Year:	2012
VIN:	1C4RJFCT8CC274336
Make:	Jeep
Stock:	274336
Model/Trim:	Grand Cherokee Overland Summit
Condition:	Pre-Owned
Body:	SUV
Exterior:	Brilliant Black Crystal Pearl
Engine:	5.7L VVT V8 HEMI MDS ENGINE
Interior:	Black/New Saddle Leather
Mileage:	86,747
Drivetrain:	4 Wheel Drive
Economy:	City 13 / Highway 20

Vehicle Description

Welcome to Leesburg Auto Import, the home of the best used cars in the east coast. We pride ourselves on our competitive and unbeatable prices. We buy cars and accept trade in.

Installed Options

Interior

- 115V pwr outlet- 12-volt pwr outlet- 12-volt rear pwr outlet
- Auto-dimming rear view mirror w/microphone- Heated front seats- Keyless Enter-N-Go
- Leather seating surfaces w/edge welting- Low-back bucket seats
- Memory for radio, driver seat, & mirrors
- Pwr 8-way driver/passenger seats -inc: driver seat memory - Pwr door locks
- Remote keyless entry- Remote proximity keyless entry
- Sentry key theft deterrent system- Ventilated front seats- 140-mph speedometer
- 60/40 folding rear seat- Active head restraints- Adaptive speed control- Air filtering
- Automatic air cond w/dual-zone temp control - Black olive ash interior applique
- Cargo compartment cover- Cargo net- Cargo tie-down loops
- Cargo trim panel w/storage net- Dual visors w/illuminated vanity mirrors- Floor carpet
- Front & rear LED lamps- Full length floor console- Glove box lamp- Heated rear seats
- Heated steering wheel- Illuminated cup holders- Illuminated entry
- Leather wrapped IP & center armrest- Leather wrapped shift knob
- Luxury door trim panel- Luxury front/rear floor mats w/logo- Overhead console
- Passenger assist handles- Premium instrument cluster w/tachometer
- Pwr 4-way driver/passenger lumbar adjust- Pwr front windows w/1-touch up & down
- Pwr locking fuel filler door- Pwr tilt/telescoping steering column- Rear window defroster
- Remote start system- Removable rechargeable interior lamp- Retained accessory pwr
- Security alarm- Sill molding- Steering wheel audio controls
- Universal garage door opener- Vehicle information center
- Wood/leather wrapped steering wheel

Exterior

- Dual pane panoramic sunroof- Mirror memory- P265/50R20 all-season BSW tires
- 20" x 8.0" bright polished aluminum wheels- Auto high beam headlamp control
- Auto-dimming driver side mirror- Auto-dimming passenger side mirror
- Automatic headlamp leveling system- Automatic headlamps- Bi-xenon headlamps
- Body color fascia w/bright insert- Bright door handles- Bright grille
- Bright grille & fog lamp bezels- Bright license plate brow- Bright side roof rails
- Chrome bodyside molding- Deep tint sunscreen glass- Fog lamps
- Front license plate bracket- Full size spare tire w/steel wheel- Glass liftgate

Option Packages

Factory Installed Packages

5.7L VVT V8 HEMI MDS ENGINE

-inc: 220-amp alternator, 230mm rear axle, 3.45 rear axle ratio, HD 4-wheel anti-lock disc brakes, dual exhaust w/bright tips, 6800lb GVWR, HD engine cooling, trailer tow group IV	\$2,195
---	----------------

24R OVERLAND SUMMIT CUSTOMER PREFERRED ORDER SELECTION PKG

-inc: 5.7L V8 HEMI engine, 6-speed auto trans, 20" bright polished aluminum wheels, adaptive speed control, black olive ash interior applique, blind spot & cross path detection, bright grille & fog lamp bezels, forward collision warning, front chrome tow hooks, summit edition group	\$3,600
--	----------------

Option Packages Total

\$5,795

- Heated mirrors- Hood insulation- Laminated front door glass- Mirror turn signals
- Monotone paint- Premium insulation group- Pwr liftgate- Pwr multi-function mirrors
- Rain sensing variable intermittent windshield wipers- Rear spoiler on liftgate
- Rear window wiper & washer- Tinted front door glass- Tinted windshield

Safety

- 115V pwr outlet- 12-volt pwr outlet- 12-volt rear pwr outlet
- Auto-dimming rear view mirror w/microphone- Heated front seats- Keyless Enter-N-Go
- Leather seating surfaces w/edge welting- Low-back bucket seats
- Memory for radio, driver seat, & mirrors
- Pwr 8-way driver/passenger seats -inc: driver seat memory - Pwr door locks
- Remote keyless entry- Remote proximity keyless entry
- Sentry key theft deterrent system- Ventilated front seats- 140-mph speedometer
- 60/40 folding rear seat- Active head restraints- Adaptive speed control- Air filtering
- Automatic air cond w/dual-zone temp control - Black olive ash interior applique
- Cargo compartment cover- Cargo net- Cargo tie-down loops
- Cargo trim panel w/storage net- Dual visors w/illuminated vanity mirrors- Floor carpet
- Front & rear LED lamps- Full length floor console- Glove box lamp- Heated rear seats
- Heated steering wheel- Illuminated cup holders- Illuminated entry
- Leather wrapped IP & center armrest- Leather wrapped shift knob
- Luxury door trim panel- Luxury front/rear floor mats w/logo- Overhead console
- Passenger assist handles- Premium instrument cluster w/tachometer
- Pwr 4-way driver/passenger lumbar adjust- Pwr front windows w/1-touch up & down
- Pwr locking fuel filler door- Pwr tilt/telescoping steering column- Rear window defroster
- Remote start system- Removable rechargeable interior lamp- Retained accessory pwr
- Security alarm- Sill molding- Steering wheel audio controls
- Universal garage door opener- Vehicle information center
- Wood/leather wrapped steering wheel

Mechanical

- 3.6L VVT V6 flex fuel engine (REQ: NAS 50 State Emissions)
- 5-speed automatic transmission (REQ: ERB Engine)- Anti-lock 4-wheel disc brakes
- 180-amp alternator- 195mm front axle- 195mm rear axle
- 3.09 axle ratio (REQ: ERB Engine)- 6500lb GVWR- 7 & 4-pin wiring harness
- 700-amp maintenance free battery- Bright exhaust tip- Class IV receiver hitch
- Conventional differential front axle- Conventional differential rear axle- Engine oil cooler
- Front chrome tow hooks- Normal duty suspension- Pwr rack & pinion steering
- Quadra-Trac II 4WD system- Selec-Terrain system- Standard duty engine cooling
- Tip start

Price excludes \$599.00 processing fee, registration fees and state and local sales taxes. 3% surcharge will be added on all CC charges over \$500.00. Deposits are non-refundable. All our sales are based on first-come-first-serve policy. We work very hard to accurately describe our vehicles through text descriptions and elaborate photos. When you purchase a pre-owned vehicle it is not a new vehicle. Any used vehicle can have normal wear and blemishes. Please read the descriptions thoroughly and view all pictures.

Leesburg Auto Import

Leesburg Auto Import

View this car on our website at leesburgautoimport.com/6531873

Website: leesburgautoimport.com

Phone: Toll Free: 1-866-249-5348, Local: 703-771-7600

Map: [2 Fairfax St SE, Leesburg, Virginia 20175](#)

