



2018 Jeep Wrangler JL Unlimited Sport 4X4 DUPONT KEVLAR,LIFTED,LED'S,FUEL 20'S

Our Price \$69,900

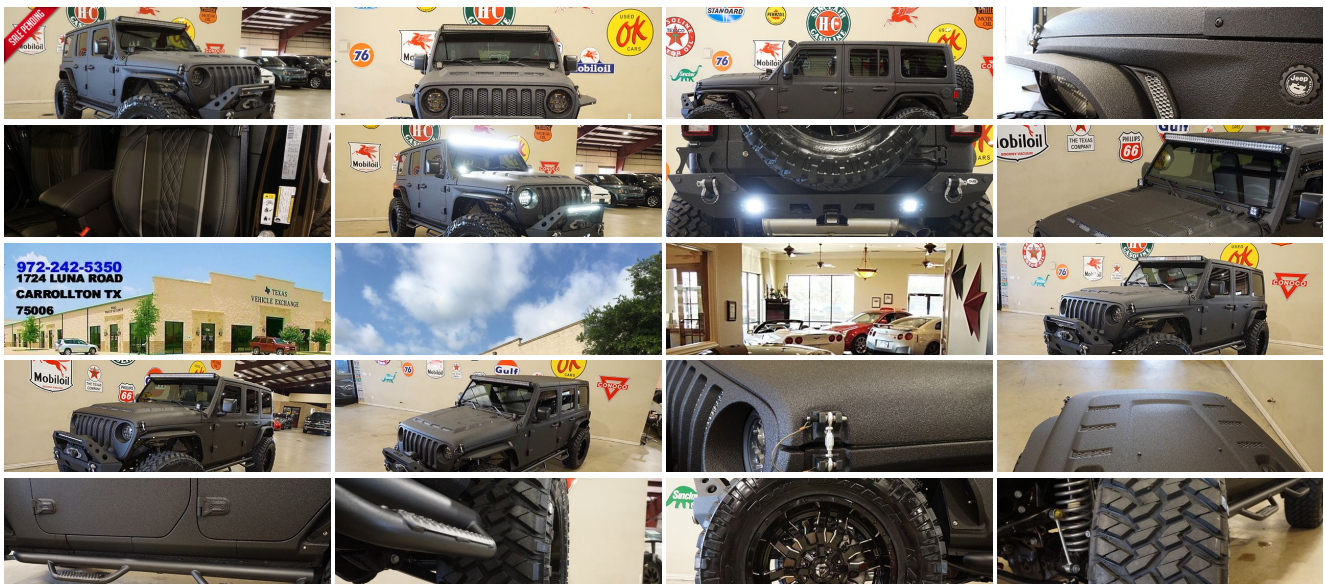
View this vehicle on our website at tveauto.com



972-242-5350

1724 Luna Road , Carrollton, TX 75006

Photos
Details
Contact



Specifications:

Year:	2018
VIN:	1C4HJXDG2JW235272
Make:	Jeep
Stock:	235272
Model/Trim:	Wrangler JL Unlimited Sport 4X4 DUPONT KEVLAR,LIFTED,LED'S,FUEL 20'S
Condition:	Pre-Owned
Body:	SUV
Exterior:	Black
Engine:	ENGINE: 3.6L V6 24V VVT UPG I W/ESS
Interior:	Black Leather
Transmission:	TRANSMISSION: 8-SPEED AUTOMATIC (850RE)
Mileage:	49
Drivetrain:	4 Wheel Drive
Economy:	City 17 / Highway 23

Vehicle Description

NATION WIDE FINANCING

SUBMIT CREDIT APP WWW.TVEAUTO.COM

OR CALL 972-242-5350

"RAPTOR BLACK EDITION"

CUSTOM BUILT **KEVLAR** 2018 JEEP WRANGLER JL UNLIMITED SPORT 4X4 WITH 24S PACKAGE

UPGRADES INCLUDE:

- * RAPTOR BLACK KEVLAR COATING WITH SILVER ACCENTS
- * CUSTOM ALEA BLACK LEATHER WITH SILVER STITCHING
- * HEATED FRONT SEATS
- * FACTORY REMOTE START
- * CONVENIENCE GROUP
- * FACTORY 7.0 INCH TOUCH SCREEN WITH AM/FM/SIRIUS STEREO & ALPINE PREMIUM AUDIO SYSTEM
- * FACTORY BACK-UP CAMERA
- * U-CONNECT

- * DV8 OFF ROAD FS-25 STUBBY FRONT BUMPER WITH FRONT SKID PLATE & LED LIGHT BAR & LED FOGLIGHTS
- * FRONT D-RINGS & ISOLATORS (SILVER)
- * SMITTYBILT NEW GEN II "X20" 10,000 LB WATERPROOF AND WIRELESS CONTROL WINCH WITH SYNTHETIC ROPE
- * FACTORY 55 PROLINK (BLACK)
- * QUAKE LED HEADLIGHTS
- * FACTORY MESH GRILLE PAINTED SILVER
- * NEW RK SPORT RAM AIR VENTED HOOD
- * DRAKE OFF ROAD HOOD LATCHES
- * DV8 OFF ROAD STEEL SLIM FENDERS
- * DV8 OFF ROAD FRONT & REAR INNER FENDERS
- * RUBICON EXPRESS 2.5" LIFT KIT WITH TERAFLX FALCON SHOCKS
- * TEREFLX FALCON STABILIZER KIT
- * SUSPENSION PARTS (PAINTED SILVER)
- * MOPAR AUXILIARY SWITCH BANK KIT
- * 50" LED LIGHT BAR AND 2 RIGID INDUSTRIES DUALY D2 LED PILLAR LIGHTS
- * SMITTYBILT BLACK TUBULAR STEPS
- * SMITTYBILT SPARE TIRE ADAPTOR
- * DV8 OFF ROAD REAR BUMPER WITH 2 LED LIGHTS
- * REAR D-RINGS & ISOLATORS (SILVER)
- * MOPAR ALL WEATHER FLOOR MATS
- * SUPERCHIPS FLASHCAL PROGRAMMER
- * 20" FUEL GLOSS BLACK & MILLED "SLEDGE" WHEELS
- * BRAND NEW NITTO TRAIL GRAPPLER 37X13.50R/20 TIRES

WE BUILD EVERY JEEP WITH PRIDE! DO NOT HESITATE TO CALL US WITH THIS JEEP BUILD. WE CAN MAKE CHANGES TO THIS JEEP BUILD OR CUSTOM BUILD ANY JEEP TO YOUR PREFERENCE. GIVE US A CALL @ 972-242-5350 OR STOP BY FOR A TEST DRIVE. 1724 LUNA RD IN CARROLLTON - 2 MILES NORTH OF 635.

Installed Options

Interior

- 6-Way Driver Seat -inc: Manual Recline, Height Adjustment, Fore/Aft Movement and Manual Lumbar Support
- Cloth Low-Back Bucket Seats
- Front Seats w/Cloth Back Material and Manual Driver Lumbar
- Full Carpet Floor Covering -inc: Carpet Front And Rear Floor Mats
- Gauges -inc: Speedometer, Odometer, Engine Coolant Temp, Tachometer, Engine Hour Meter, Trip Odometer and Trip Computer
- Manual Air Conditioning- Trip Computer- 2 12V DC Power Outlets
- 2 Seatback Storage Pockets
- 4-Way Passenger Seat -inc: Manual Recline and Fore/Aft Movement
- 60-40 Folding Split-Bench Front Facing Fold Forward Seatback Cloth Rear Seat
- Analog Display- Cargo Space Lights- Carpet Floor Trim, Carpet And Rubber Mat
- Compass- Cruise Control w/Steering Wheel Controls- Day-Night Rearview Mirror
- Delayed Accessory Power- Fade-To-Off Interior Lighting- Front And Rear Map Lights
- Front Center Armrest w/Storage
- Full Floor Console w/Locking Storage and 2 12V DC Power Outlets
- HVAC -inc: Console Ducts- Illuminated Front Cupholder- Illuminated Rear Cupholder
- Instrument Panel Bin, Dashboard Storage, Driver And Passenger Door Bins
- Interior Trim -inc: Metal-Look Instrument Panel Insert and Metal-Look Console Insert
- Locking Cargo Area Concealed Storage- Locking Glove Box
- Manual Adjustable Front Head Restraints and Foldable Rear Head Restraints
- Manual Tilt/Telescoping Steering Column- Outside Temp Gauge
- Proximity Key For Push Button Start Only - Redundant Digital Speedometer
- Removable 3rd Row Windows- Sentry Key Engine Immobilizer- Systems Monitor
- Urethane Gear Shift Knob- Vanity w/Driver And Passenger Auxiliary Mirror

Exterior

- Black Front Bumper w/2 Tow Hooks- Black Rear Bumper w/1 Tow Hook
- Manual Convertible Top w/Fixed Roll-Over Protection- Tires: 245/75R17 All Season
- Wheels: 17" x 7.5" Tech Silver Aluminum
- Aero-Composite Halogen Headlamps w/Delay-Off- Black Door Handles
- Black Fender Flares- Black Side Windows Trim- Body-Colored Grille- Clearcoat Paint
- Conventional Rear Cargo Access- Deep Tint Sunscreen Windows- Front Fog Lamps
- Full-Size Spare Tire Mounted Outside Rear
- Galvanized Steel/Aluminum/Magnesium Panels- Non-Lock Fuel Cap w/o Discriminator
- Removable Rear Window- Variable Intermittent Wipers

Safety

- 6-Way Driver Seat -inc: Manual Recline, Height Adjustment, Fore/Aft Movement and Manual Lumbar Support
- Cloth Low-Back Bucket Seats
- Front Seats w/Cloth Back Material and Manual Driver Lumbar
- Full Carpet Floor Covering -inc: Carpet Front And Rear Floor Mats
- Gauges -inc: Speedometer, Odometer, Engine Coolant Temp, Tachometer, Engine Hour Meter, Trip Odometer and Trip Computer
- Manual Air Conditioning- Trip Computer- 2 12V DC Power Outlets
- 2 Seatback Storage Pockets
- 4-Way Passenger Seat -inc: Manual Recline and Fore/Aft Movement
- 60-40 Folding Split-Bench Front Facing Fold Forward Seatback Cloth Rear Seat
- Analog Display- Cargo Space Lights- Carpet Floor Trim, Carpet And Rubber Mat
- Compass- Cruise Control w/Steering Wheel Controls- Day-Night Rearview Mirror
- Delayed Accessory Power- Fade-To-Off Interior Lighting- Front And Rear Map Lights
- Front Center Armrest w/Storage
- Full Floor Console w/Locking Storage and 2 12V DC Power Outlets
- HVAC -inc: Console Ducts- Illuminated Front Cupholder- Illuminated Rear Cupholder
- Instrument Panel Bin, Dashboard Storage, Driver And Passenger Door Bins
- Interior Trim -inc: Metal-Look Instrument Panel Insert and Metal-Look Console Insert
- Locking Cargo Area Concealed Storage- Locking Glove Box
- Manual Adjustable Front Head Restraints and Foldable Rear Head Restraints
- Manual Tilt/Telescoping Steering Column- Outside Temp Gauge
- Proximity Key For Push Button Start Only - Redundant Digital Speedometer
- Removable 3rd Row Windows- Sentry Key Engine Immobilizer- Systems Monitor
- Urethane Gear Shift Knob- Vanity w/Driver And Passenger Auxiliary Mirror

Mechanical

- Transmission: 6-Speed Manual- 1000# Maximum Payload- 180 Amp Alternator

Option Packages

Factory Installed Packages

ENGINE: 3.6L V6 24V VVT UPG I W/ESS

TRANSMISSION: 8-SPEED AUTOMATIC (850RE)
-inc: Dana M200 Rear Axle, Hill Descent Control, Tip Start **\$2,000**

ALPINE PREMIUM AUDIO SYSTEM
-inc: 220 Amp Alternator **\$1,295**

BLACK 3-PIECE HARD TOP
-inc: Rear Window Defroster, Freedom Panel Storage Bag, Rear Window Wiper/Washer **\$1,195**

CONVENIENCE GROUP
-inc: Universal Garage Door Opener **\$595**

TECHNOLOGY GROUP
-inc: USB Host Flip, Google Android Auto, Air Conditioning w/Auto Temp Control, Radio: Uconnect 4 w/7" Display, 7.0" Touchscreen Display, GPS Antenna Input, Air Filtering, Cluster 7.0" TFT Color Display, Apple CarPlay, Integrated Center Stack Radio, SiriusXM Satellite Radio, For More Info, Call 800-643-2112, 1-Yr SiriusXM Radio Service **\$995**

TRAIL RAIL MANAGEMENT SYSTEM
-inc: Cargo Compartment Floor Mat **\$195**

QUICK ORDER PACKAGE 24S SPORT S
-inc: Engine: 3.6L V6 24V VVT UPG I w/ESS, Transmission: 8-Speed Automatic (850RE), Front 1-Touch Down Power Windows, Remote Keyless Entry, Speed Sensitive Power Locks, Leather Wrapped Steering Wheel, Power Heated Mirrors, Automatic Headlamps, Sun Visors w/Illuminated Vanity Mirrors, Security Alarm **\$3,200**

Option Packages Total **\$9,475**

- 21.3 Gal. Fuel Tank- 3.43 Rear Axle Ratio
- 4-Wheel Disc Brakes w/4-Wheel ABS, Front Vented Discs, Brake Assist and Hill Hold Control
- 50 State Emissions- 650CCA Maintenance-Free Battery w/Run Down Protection
- Auto Locking Hubs- Brake Actuated Limited Slip Differential
- Electro-Hydraulic Power Assist Steering- Engine Auto Stop-Start Feature
- Engine Oil Cooler- Engine: 3.6L V6 24V VVT UPG I w/ESS
- Front And Rear Anti-Roll Bars- GVWR: 5,300 lbs- Gas-Pressurized Shock Absorbers
- Leading Link Front Suspension w/Coil Springs- Manual Transfer Case
- Normal Duty Suspension- Part-Time Four-Wheel Drive- Single Stainless Steel Exhaust
- Towing Equipment -inc: Trailer Sway Control
- Trailing Arm Rear Suspension w/Coil Springs

Texas Vehicle Exchange

Texas Vehicle Exchange

View this car on our website at tveauto.com/6531295

Website: tveauto.com

Phone: [972-242-5350](tel:972-242-5350)

Map: [1724 Luna Road, Carrollton, TX 75006](https://www.google.com/maps/place/1724+Luna+Road,+Carrollton,+TX+75006)

