



2010 Nissan Armada Platinum

NO HAGGLE CASH PRICE! \$13,786

Average Retail Price \$15,925

View this vehicle on our website at sterlingmotorsport.com

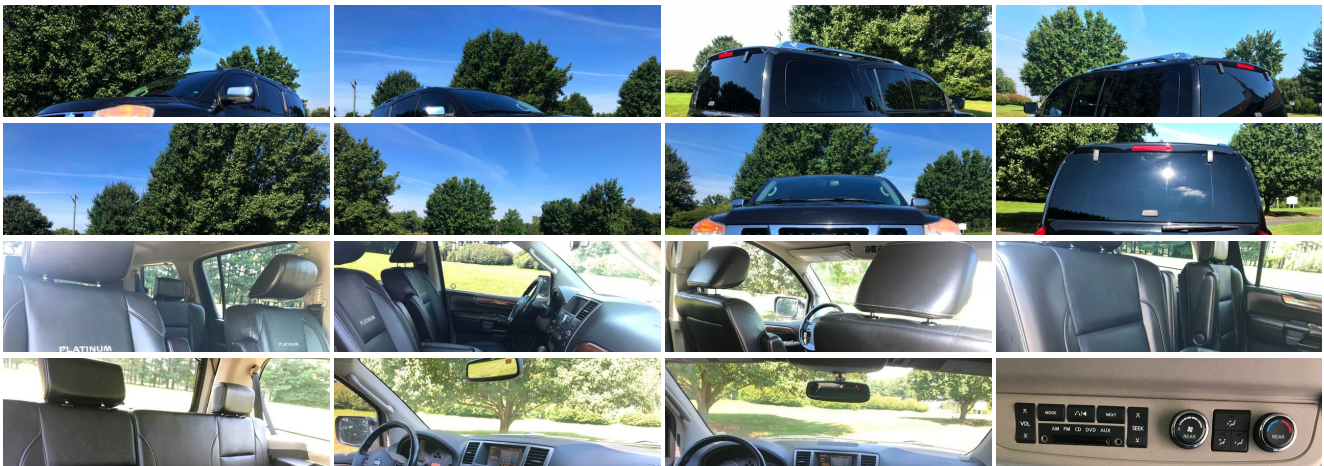
[571-313-1989](tel:571-313-1989)

9 Douglas Court Unit 101, Sterling, VA 20166

Photos

Details

Contact





Specifications:

Year:	2010
VIN:	5N1AA0NE5AN615388
Make:	Nissan
Stock:	615388
Model/Trim:	Armada Platinum
Condition:	Pre-Owned
Body:	SUV
Exterior:	Galaxy Black
Engine:	5.6L DOHC 32-valve Endurance V8 engine
Interior:	Black Leather
Mileage:	114,873
Drivetrain:	All Wheel Drive
Economy:	City 9 / Highway 13

Vehicle Description

Installed Options

Interior

- (4) 12-volt outlets- 2-driver memory for pedals, outside mirrors & driver seat
- 2nd row 40/20/40 fold-flat split bench seat w/manual recline
- 3rd row 60/40 pwr fold-flat store-in-floor bench seat
- Auto-dimming rearview mirror w/compass & garage door opener controls
- Dual level center console -inc: storage for pens, tissue, CD/DVD cases, external console storage pockets, internal 12V outlet, rear 12V outlet
- Engine immobilizer system
- Front bucket seats -inc: 8-way pwr driver seat w/manual lumbar, 4-way pwr passenger seat
- Intelligent Key- Pwr adjustable pedals- Pwr door locks w/auto lock & selective unlock
- Pwr liftgate release- Pwr liftgate window release- Remote keyless entry
- Universal garage door opener- (6) cargo area tie down hooks
- Contrast stitching on seats, door panels, steering wheel & shift knob
- Double visors w/extendors & illuminated vanity mirrors
- Dual zone auto air conditioning w/rear seat controls - Floor-mounted gated shifter
- Foot well lamp w/time delay- Heated front seats
- Heated leather-wrapped steering wheel w/cruise & audio controls
- Interior lighting -inc: front/rear reading lamps, mood lighting, illuminated entry/exit, glove box lamp, cargo area lamp
- Leather seat trim (1st & 2nd row)- Leather-wrapped shift knob
- Manual fuel door release- Manual tilt steering column- Outside temp display
- Overhead console w/storage- Pwr windows w/auto up/down & safety reverse
- Rear glass defogger w/timer- Trip computer- Vehicle security alarm system
- Wood interior trim- [M10] In-cabin microfilter

Exterior

- Pwr rear liftgate w/flip-up glass- 20" x 8" 6-spoke chrome clad aluminum alloy wheels
- Auto on/off halogen headlights - Body-color bumpers
- Chrome front/color-keyed rear door handles- Chrome grille
- Chrome pwr folding heated mirrors -inc: puddle lamps, integrated turn signals & driver-side auto-dim
- Color-keyed body-side moldings w/chrome accent- Deep tint rear privacy glass
- Fog lights- Full size spare tire- Intermittent rear wiper
- One-piece roof rack side rails w/chrome accents & adjustable cross bars
- P275/60HR20 BSW tires- Pwr flip-out rear quarter windows- Side step rails
- Speed-sensitive variable intermittent windshield wipers

- UV-reducing solar glass windshield- [B10] Front & rear splash guards
- [J01] Pwr tilt/glide moonroof

Safety

- (4) 12-volt outlets- 2-driver memory for pedals, outside mirrors & driver seat
- 2nd row 40/20/40 fold-flat split bench seat w/manual recline
- 3rd row 60/40 pwr fold-flat store-in-floor bench seat
- Auto-dimming rearview mirror w/compass & garage door opener controls
- Dual level center console -inc: storage for pens, tissue, CD/DVD cases, external console storage pockets, internal 12V outlet, rear 12V outlet
- Engine immobilizer system
- Front bucket seats -inc: 8-way pwr driver seat w/manual lumbar, 4-way pwr passenger seat
- Intelligent Key- Pwr adjustable pedals- Pwr door locks w/auto lock & selective unlock
- Pwr liftgate release- Pwr liftgate window release- Remote keyless entry
- Universal garage door opener- (6) cargo area tie down hooks
- Contrast stitching on seats, door panels, steering wheel & shift knob
- Double visors w/extendors & illuminated vanity mirrors
- Dual zone auto air conditioning w/rear seat controls - Floor-mounted gated shifter
- Foot well lamp w/time delay- Heated front seats
- Heated leather-wrapped steering wheel w/cruise & audio controls
- Interior lighting -inc: front/rear reading lamps, mood lighting, illuminated entry/exit, glove box lamp, cargo area lamp
- Leather seat trim (1st & 2nd row)- Leather-wrapped shift knob
- Manual fuel door release- Manual tilt steering column- Outside temp display
- Overhead console w/storage- Pwr windows w/auto up/down & safety reverse
- Rear glass defogger w/timer- Trip computer- Vehicle security alarm system
- Wood interior trim- [M10] In-cabin microfilter

Mechanical

- 2-speed transfer case w/4-Low & auto 4x4 - 4-wheel disc brakes (vented front)
- 4-wheel independent suspension- 5-speed automatic transmission w/tow/haul mode
- 5.6L DOHC 32-valve Endurance V8 engine- All-Mode 4-wheel drive
- Auto leveling rear suspension- Chrome tail pipe finisher
- Class III receiver hitch w/7-pin wiring harness - Dual front tow hooks
- Engine speed-sensitive pwr steering- Front & rear stabilizer bar- HD battery
- Skid plates for oil pan, transfer case & fuel tank

Price excludes \$699.00 processing fee, registration fees and State and Local sales taxes. 3% surcharge will be added on all CC charges over \$500.00. Deposits are non-refundable. All our sales are based on first-come-first-serve policy. We work very hard to accurately describe our vehicles through text descriptions and elaborate photos. When you purchase a pre-owned vehicle it is not a new vehicle. Any used vehicle can have normal wear and blemishes. Please read the descriptions thoroughly and view all pictures.

Sterling Motorsport

Sterling Motorsport

View this car on our website at sterlingmotorsport.com/6527746

Website: sterlingmotorsport.com

Phone: 571-313-1989

Map: [9 Douglas Court Unit 101, Sterling, VA 20166](#)

