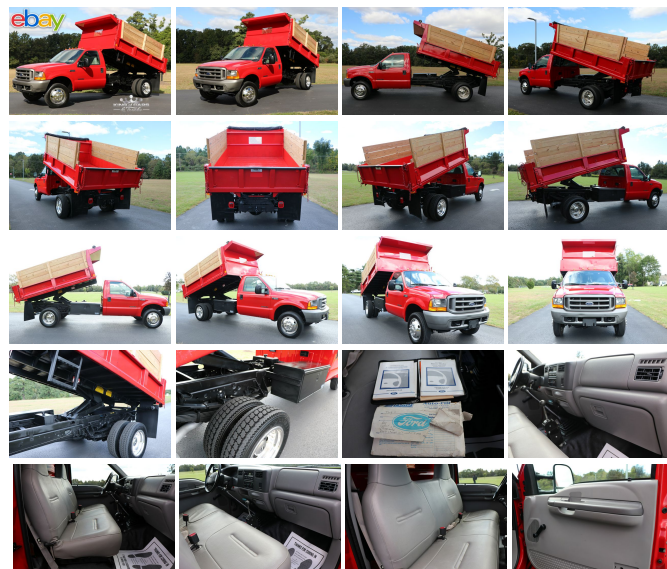


njtrucking.com
609-504-8808
1022 N Evergreen Ave
Woodbury, New Jersey
08096

King of Cars and
Trucks

2000 FORD F550 MASON PTO DUMP 7.3L DIESEL 6- SPEED 63K ORIGINAL MILES PTO

View this car on our website at njtrucking.com/6526412/ebrochure



Our Price **\$23,900**

Specifications:

Year: 2000
VIN: 1FDAF56F0YEC48092
Make: FORD F550 MASON PTO DUMP
Model/Trim: 7.3L DIESEL 6-SPEED 63K ORIGINAL MILES PTO
Condition: Pre-Owned
Body: Pickup Truck
Exterior: Red
Engine: 7.3L (444) DI V8 TURBO-DIESEL ENGINE
Interior: Gray
Mileage: 63,074
Drivetrain: Rear Wheel Drive

~~HARD TO FIND DUMP THAT IS IN AMAZING CONDITION !
 YOU WILL NOT FIND ONE BETTER !

2000 FORD F550 SUPERDUTY

~REG. CAB~

7.3L POWERSTROKE TURBO DIESEL

6-SPEED MANUAL TRANSMISSION (RARE)

(63,074 ORIGINAL / ACTUAL MILES)

2-OWNER

OWNER DRIVEN / OPERATED!

METICULOUSLY MAINTAINED

12' PTO MASON DUMP

** W/TARP **

BEST COLOR COMBO

ALL THE OPTIONS !

ORIGINAL OWNERS MANUALS

THIS TRUCK IS IN EXCELLENT CONDITION !

YOU WILL NOT FIND A NICER USED DUMP ANYWHERE IN THIS PRICE RANGE!

WHY SPEND 80K ON A NEW TRUCK WHEN YOU CAN OWN THIS FOR A 1/4 OF THAT !?!?

WILL NOT LAST !

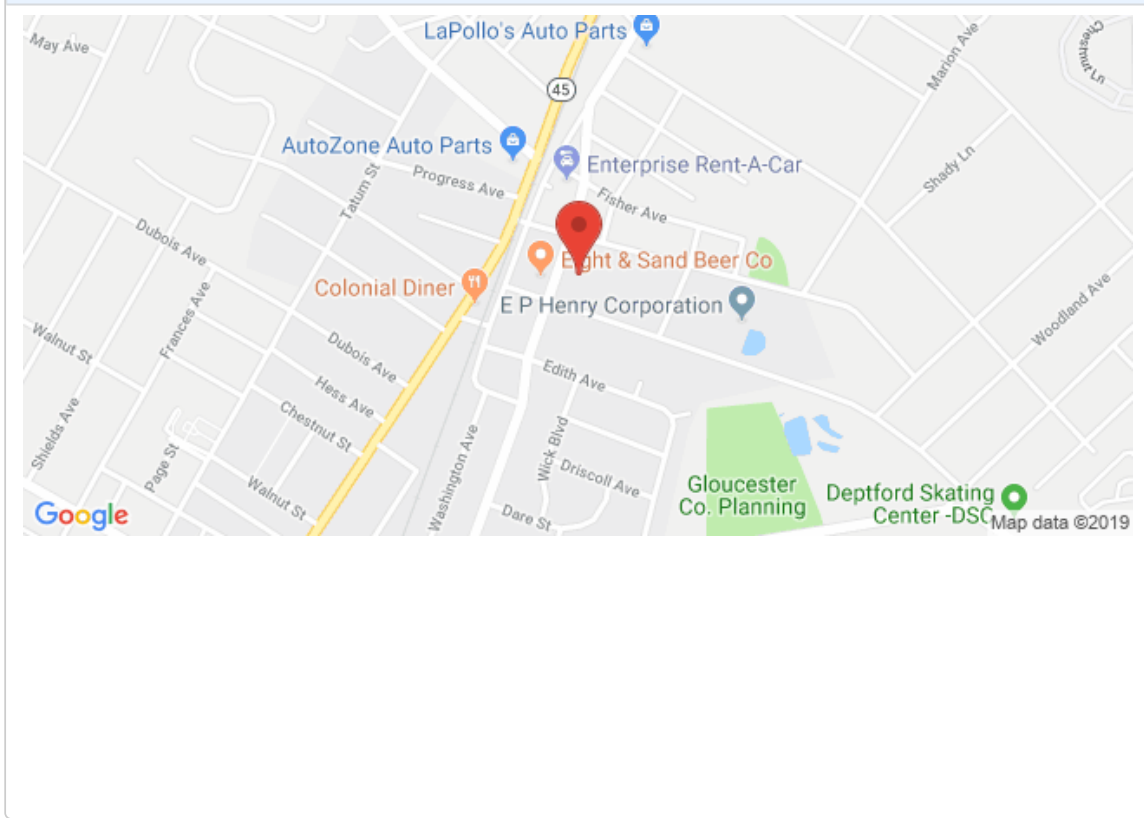
BEST OF THE BEST

DON'T SNOOZE AND LOSE BECAUSE YOU WILL NOT FIND ANOTHER LIKE IT !

\$23,900

2000 FORD F550 MASON PTO DUMP 7.3L DIESEL 6-SPEED 63K ORIGINAL MILES PTO
King of Cars and Trucks - 609-504-8808 - View this car on our website at njtrucking.com/6526412/ebrochure

Our Location :



2000 FORD F550 MASON PTO DUMP 7.3L DIESEL 6-SPEED 63K ORIGINAL MILES PTO
King of Cars and Trucks - 609-504-8808 - View this car on our website at njtrucking.com/6526412/ebrochure

Installed Options

Interior

- (4) air registers w/positive shut-off- 11.5" day/night rearview mirror- Auxiliary pwr point
- Black vinyl full floor covering- Black vinyl steering wheel- Cigar lighter
- Color-keyed door trim panel-inc: hard armrest, grab handle, reflector
- Color-keyed instrument panel w/dual cupholders- Color-keyed molded cloth headliner
- Color-keyed scuff plates- Dual front color-keyed coat hooks
- Electronic AM/FM stereo-inc: digital clock, dual door-mounted speakers
- Front door operated dome lamp w/time delay off- Front passenger assist handle
- Gray fabric back panel cover
- HD vinyl bench seat w/outboard seating position integral headrests - Inside hood release
- Instrumentation-inc: tachometer, voltmeter, trip odometer, oil pressure/ coolant temp/fuel gauges, indicator lights
- Vinyl sun visors

Exterior

- Argent grille- Argent painted front bumper- Black door handles
- Black manual fold away trailer tow mirrors- Fixed interval wipers- Roof clearance lights
- Sealed beam halogen headlights- Solar tinted glass

Safety

- (4) air registers w/positive shut-off- 11.5" day/night rearview mirror- Auxiliary pwr point
- Black vinyl full floor covering- Black vinyl steering wheel- Cigar lighter
- Color-keyed door trim panel-inc: hard armrest, grab handle, reflector
- Color-keyed instrument panel w/dual cupholders- Color-keyed molded cloth headliner
- Color-keyed scuff plates- Dual front color-keyed coat hooks
- Electronic AM/FM stereo-inc: digital clock, dual door-mounted speakers
- Front door operated dome lamp w/time delay off- Front passenger assist handle
- Gray fabric back panel cover
- HD vinyl bench seat w/outboard seating position integral headrests - Inside hood release
- Instrumentation-inc: tachometer, voltmeter, trip odometer, oil pressure/ coolant temp/fuel gauges, indicator lights
- Vinyl sun visors

Mechanical

- (2) front tow hooks- (6) 19.5" x 6.0" steel wheels
- (6) 225/70R19.5F all-season SBR BSW tires- 11,420# maximum payload- 141" WB
- 17,500# GVWR (5600 front/13,500 rear), springs (5600 front/13,500 rear), axles (6000 front/13,500 rear)
- 4-speed electronic automatic transmission w/OD- 4.88 rear axle ratio
- 40 gallon fuel tank-inc: auxiliary fuel tap - 6.8L (415) SOHC SEFI V10 engine
- 7-pin trailer tow wiring- 78 amp/hr (750 CCA) maintenance-free battery
- 95 amp alternator- Front stabilizer bar- HD gas shock absorbers- Mono-beam front axle
- Pwr 4-wheel anti-lock disc brakes- Pwr steering- Rear wheel drive

Option Packages

Factory Installed Packages

7.3L (444) DI V8 TURBO-DIESEL ENGINE

-inc: 6000# front axle/springs, 130 amp alt, dual 78 amp/hr batteries, engine block heater, exhaust back pressure valve

\$4,250

Option Packages Total

\$4,250

King of Cars and Trucks

njtrucking.com

609-504-8808

1022 N Evergreen Ave

Woodbury, New Jersey 08096

© 2019 AutoRevo - All rights reserved. - Powered by [AutoRevo](#)