



2012 Toyota Prius Plug-In Advanced

Our No-Haggle Price \$11,997

Book Retail Value \$15,250

View this vehicle on our website at leesburgautoimport.com

Leesburg Auto Import

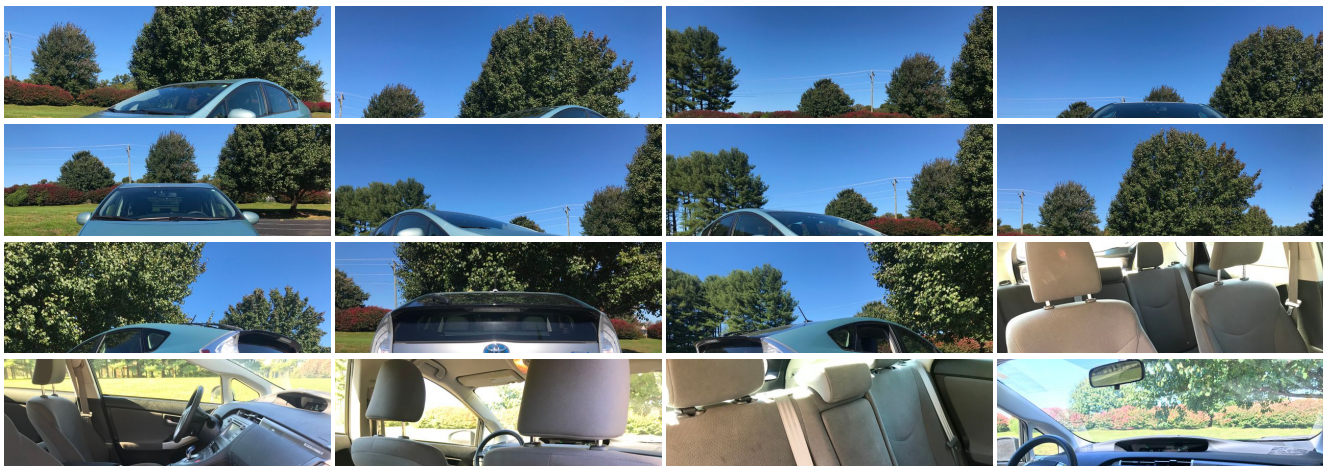
Toll Free: 1-866-249-5348, Local: 703-771-7600

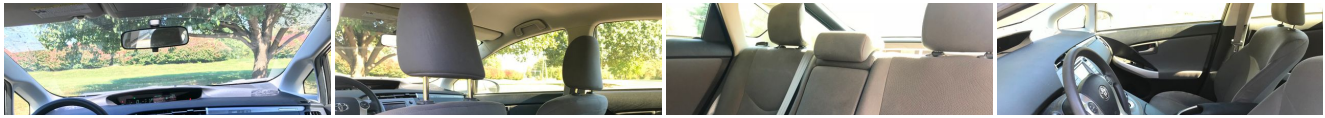
2 Fairfax St SE , Leesburg, Virginia 20175

Photos

Details

Contact





Specifications:

Year:	2012
VIN:	JTDKN3DP7C3013706
Make:	Toyota
Stock:	L013706
Model/Trim:	Prius Plug-In Advanced
Condition:	Pre-Owned
Body:	Sedan
Exterior:	GREEN
Engine:	1.8L DOHC 16-valve VVT-i Atkinson-cycle I4 hybrid engine
Interior:	Gray
Mileage:	60,519
Drivetrain:	Front Wheel Drive
Economy:	City 51 / Highway 49

Vehicle Description

Welcome to Leesburg Auto Import, the home of the best used cars in the east coast. We pride ourselves on our competitive and unbeatable prices. We buy cars and accept trade in.

Installed Options
<p>Interior</p> <ul style="list-style-type: none"> - (2) 12V pwr outlets - 8-way pwr driver & 4-way manual passenger adjustable seats -inc: pwr driver lumbar support - Automatic climate control -inc: air filter, dust & pollen filter/filtration mode, electric compressor, humidity sensor & push button controls - Central instrument display -inc: digital speedometer & odometer, instant fuel consumption, fuel gauge, shift-lever indicator - Dynamic radar cruise control- Engine immobilizer - Front center console w/armrest -inc: storage compartment w/removable utility tray, wire-management feature, (2) cup holders, (2) 12V aux pwr outlets - Heated front seats w/driver pwr lumbar support - Multi-information display -inc: energy monitor, charger timer, fuel consumption history, hybrid system indicator, average fuel economy, distance to empty, average speed & trip distance, EV driving ratio, hybrid system indicator, Eco savings record - Pwr door locks w/anti-lockout feature -inc: shift-linked automatic locking feature - Remote air conditioning system- Remote illuminated entry- SofTex leather seat material - Three-door smart key entry system -inc: panic button, remote keyless entry w/(2)-stage unlock - Tilt/telescopic adjustable steering wheel -inc: audio controls, HVAC controls, Bluetooth controls, touch tracer display controls, dynamic radar cruise control controls - (4) retractable assist grips- 60/40 split fold-down rear seat- Active headrests - Adjustable front/rear headrests -inc: fold-forward rear headrests - Auto-dimming rearview mirror- Cargo area lamp- Cargo area side panel storage - Cargo area under floor storage- Driver & passenger seatback pockets - Dual compartment glove box- Dual front sunvisors w/illuminated vanity mirrors - Front door storage pockets -inc: sculpted bottle holders- Heads-up display - HomeLink universal garage door opener - Overhead console w/maplights & shift illumination- Plasmacluster ionizer - Pwr windows w/auto up/down- Rear dome lamp - Rear fold-down armrest w/(2) cup holders- Rear window electric defogger w/timer - Retained accessory pwr- Tonneau cover w/clasp for under-floor stowage
<p>Exterior</p> <ul style="list-style-type: none"> - Auto-leveling LED headlamps w/auto-off feature -inc: washers

- 15" 10-spoke aluminum alloy wheels- Color-keyed folding pwr heated mirrors
- Driver/front passenger water-repellent side windows- Fog lamps
- Intermittent rear window wiper- LED tail lamps- P195/65R15 all-season tires
- Rear deck spoiler -inc: underbody spoilers & spats - Tire repair kit
- UV reduction glass windshield- Washer-linked variable intermittent windshield wipers

Safety

- (2) 12V pwr outlets
- 8-way pwr driver & 4-way manual passenger adjustable seats -inc: pwr driver lumbar support
- Automatic climate control -inc: air filter, dust & pollen filter/filtration mode, electric compressor, humidity sensor & push button controls
- Central instrument display -inc: digital speedometer & odometer, instant fuel consumption, fuel gauge, shift-lever indicator
- Dynamic radar cruise control- Engine immobilizer
- Front center console w/armrest -inc: storage compartment w/removable utility tray, wire-management feature, (2) cup holders, (2) 12V aux pwr outlets
- Heated front seats w/driver pwr lumbar support
- Multi-information display -inc: energy monitor, charger timer, fuel consumption history, hybrid system indicator, average fuel economy, distance to empty, average speed & trip distance, EV driving ratio, hybrid system indicator, Eco savings record
- Pwr door locks w/anti-lockout feature -inc: shift-linked automatic locking feature
- Remote air conditioning system- Remote illuminated entry- SofTex leather seat material
- Three-door smart key entry system -inc: panic button, remote keyless entry w/(2)-stage unlock
- Tilt/telescopic adjustable steering wheel -inc: audio controls, HVAC controls, Bluetooth controls, touch tracer display controls, dynamic radar cruise control controls
- (4) retractable assist grips- 60/40 split fold-down rear seat- Active headrests
- Adjustable front/rear headrests -inc: fold-forward rear headrests
- Auto-dimming rearview mirror- Cargo area lamp- Cargo area side panel storage
- Cargo area under floor storage- Driver & passenger seatback pockets
- Dual compartment glove box- Dual front sunvisors w/illuminated vanity mirrors
- Front door storage pockets -inc: sculpted bottle holders- Heads-up display
- HomeLink universal garage door opener
- Overhead console w/maplights & shift illumination- Plasmacluster ionizer
- Pwr windows w/auto up/down- Rear dome lamp
- Rear fold-down armrest w/(2) cup holders- Rear window electric defogger w/timer
- Retained accessory pwr- Tonneau cover w/clasp for under-floor stowage

Mechanical

- Hybrid system -inc: Lithium-ion battery, integrated permanent synchronous electric motor, integrated regenerative brake system
- Push button start- 1.8L DOHC 16-valve VVT-i Atkinson-cycle I4 hybrid engine
- Charge cable for 120V outlet- Charge port -inc: illumination & charging indicator light
- Continuously variable transmission (ECVT)- Electric pwr assisted rack & pinion steering
- Electronic throttle control system w/intelligence (ETCS-i) -inc: Eco, EV & power driving modes
- Front wheel drive- Independent MacPherson strut suspension w/stabilizer bar
- Torsion beam rear suspension- Ventilated front & solid rear pwr disc brakes

Price excludes \$599.00 processing fee, registration fees and state and local sales taxes. 3% surcharge will be added on all CC charges over \$500.00. Deposits are non-refundable. All our sales are based on first-come-first-serve policy. We work very hard to accurately describe our vehicles through text descriptions and elaborate photos. When you purchase a pre-owned vehicle it is not a new vehicle. Any used vehicle can have normal wear and blemishes. Please read the descriptions thoroughly and view all pictures.

Leesburg Auto Import

Leesburg Auto Import

View this car on our website at leesburgautoimport.com/6525770

Website: leesburgautoimport.com

Phone: Toll Free: 1-866-249-5348, Local: 703-771-7600

Map: [2 Fairfax St SE, Leesburg, Virginia 20175](#)

