

njtruckking.com
856-693-3181
1229 Broadway
Westville, New Jersey
08093

King of Cars and
Trucks

2012 FORD F550 LANDSCAPE CONTRACTOR DUMP 6.8L V10 35K MILES 1-OWNER

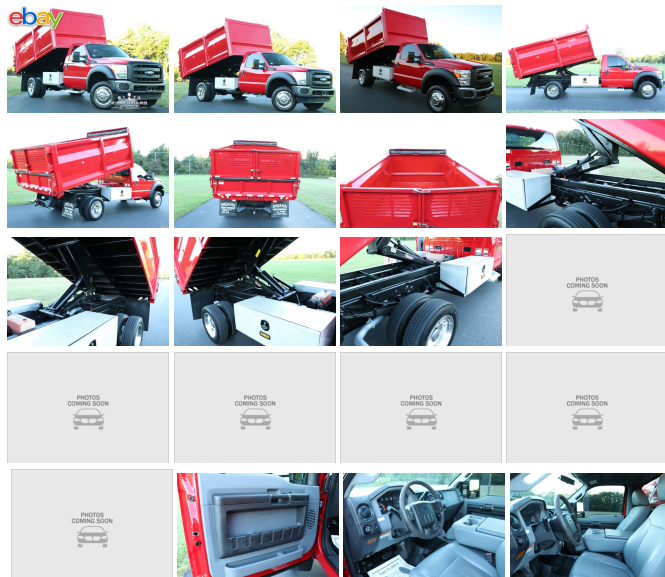
View this car on our website at njtruckking.com/6523768/ebrochure



Our Price **\$41,900**

Specifications:

Year:	2012
VIN:	1FDUF5GY0CEA83781
Make:	FORD F550 LANDSCAPE
Model/Trim:	CONTRACTOR DUMP 6.8L V10 35K MILES 1-OWNER
Condition:	Pre-Owned
Body:	Pickup Truck
Exterior:	Red
Engine:	6.8L SOHC EFI TRITON 30-VALVE V10 ENGINE
Interior:	Gray
Mileage:	35,545
Drivetrain:	Rear Wheel Drive



ULTRA RARE DUMP !!

ONE OF A KIND

2012 FORD F550 DUMP TRUCK

~12' RUGBY CONTRACTOR DUMP~

SIDE ENTRY DOOR & TARP

TOW PACKAGE

6.8L V10 GAS ENGINE

AUTOMATIC TRANSMISSION

(35,545 ORIGINAL / ACTUAL MILES)

1-OWNER

1-DRIVER

METICULOUSLY MAINTAINED

LED LIGHTS

BEST COLOR COMBO

ALL THE OPTIONS

THIS TRUCK IS PRISTINE !

NON SMOKER..NO PAINTWORK

YOU WILL NOT FIND A NICER USED DUMP ANYWHERE!

WILL NOT LAST !

BEST OF THE BEST

DON'T SNOOZE AND LOSE BECAUSE YOU WILL NOT FIND
ANOTHER LIKE IT !

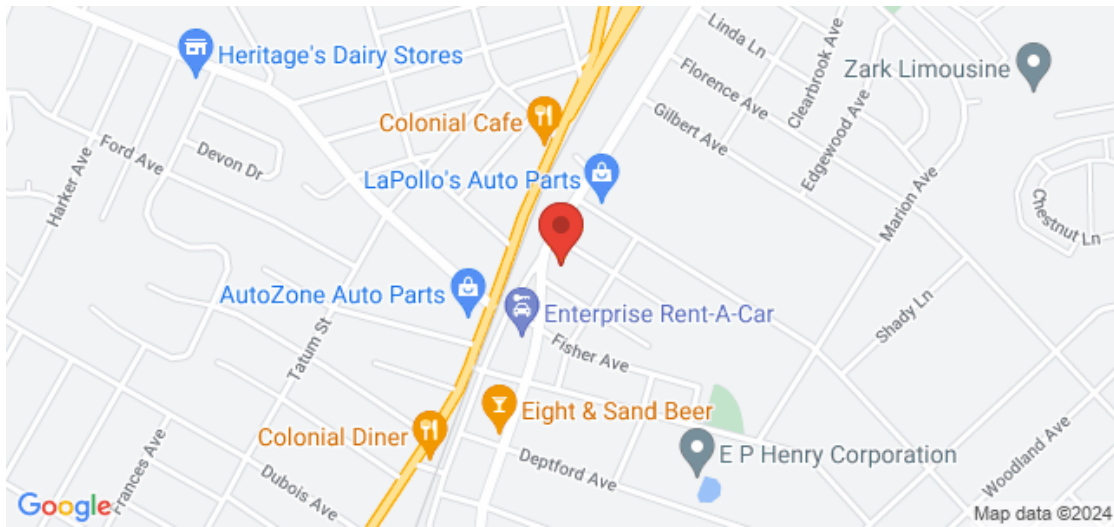
SAVE THOUSANDS OVER NEW !!!

\$41,900

2012 FORD F550 LANDSCAPE CONTRACTOR DUMP 6.8L V10 35K MILES 1-OWNER

King of Cars and Trucks - 856-693-3181 - View this car on our website at njtruckking.com/6523768/ebrochure

Our Location :



2012 FORD F550 LANDSCAPE CONTRACTOR DUMP 6.8L V10 35K MILES 1-OWNER

King of Cars and Trucks - 856-693-3181 - View this car on our website at njtruckking.com/6523768/ebrochure

Installed Options

Interior

- Auxiliary pwr point
- Color-coordinated instrument panel -inc: glove box, (4) air registers w/positive shutoff, pwr point & (4) upfitter switches
- HD vinyl 40/20/40 split bench seat -inc: center armrest, cup holder, storage
- Manual air conditioning- 11.5" day/night rearview mirror- Black vinyl full floor covering
- Black vinyl steering wheel
- Color-coordinated door trim panel -inc: armrest, grab handle, reflector
- Color-coordinated molded cloth headliner- Color-coordinated scuff plates
- Color-coordinated vinyl sun visors -inc: LH pocket, RH insert - Dash-top tray
- Door activated dome lamp w/delay, I/P switch operation
- Dual color-coordinated coat hooks- Dual front grab handles- Dual map lights
- Front passenger roof ride handles- I/P mounted dual cup holders- Inside hood release
- Instrumentation -inc: multifunction switch message center w/ice blue lighting
- Manual driver lumbar support- Oil minder system- Secondary glove box
- Tilt & telescoping steering wheel/column

Exterior

- 225/70R19.5G BSW tires -inc: (2) front all-season & (4) rear all-season tires
- 19.5" argent painted steel wheels- 3-blink lane change signal- Black door handles
- Black painted grille- Black painted steel front bumper w/grained MIC top cover
- Dual beam jewel headlights- Fixed rear window- Front fender vents
- Front license plate bracket
- Manual telescoping trailer tow mirrors w/manual glass & 2-way fold- Roof clearance lights
- Solar tinted glass- Underhood service light- Variable intermittent windshield wipers

Safety

- Auxiliary pwr point
- Color-coordinated instrument panel -inc: glove box, (4) air registers w/positive shutoff, pwr point & (4) upfitter switches
- HD vinyl 40/20/40 split bench seat -inc: center armrest, cup holder, storage
- Manual air conditioning- 11.5" day/night rearview mirror- Black vinyl full floor covering
- Black vinyl steering wheel
- Color-coordinated door trim panel -inc: armrest, grab handle, reflector
- Color-coordinated molded cloth headliner- Color-coordinated scuff plates
- Color-coordinated vinyl sun visors -inc: LH pocket, RH insert - Dash-top tray
- Door activated dome lamp w/delay, I/P switch operation
- Dual color-coordinated coat hooks- Dual front grab handles- Dual map lights
- Front passenger roof ride handles- I/P mounted dual cup holders- Inside hood release
- Instrumentation -inc: multifunction switch message center w/ice blue lighting
- Manual driver lumbar support- Oil minder system- Secondary glove box
- Tilt & telescoping steering wheel/column

Mechanical

- Dual rear wheels
- TorqShift 5-speed automatic transmission w/OD -inc: tow/haul mode (REQ: 99Y Engine)
- (2) front tow hooks- (40) gallon aft-axle fuel tank- 141" wheelbase
- 155-amp HD alternator- 4.88 axle ratio (REQ: 99Y Engine)
- 6.8L SOHC EFI Triton 30-valve V10 engine
- 7-wire trailer tow harness w/relays, blunt cut & labeled- 78 amp/hr 750 CCA battery
- Front/rear stabilizer bars- HD gas shock absorbers
- Mono-beam front axle w/coil spring suspension- Pwr 4-wheel disc brakes w/hydro boost
- Pwr steering w/steering damper- Rear auxiliary springs- Rear wheel drive
- Stationary elevated idle control (SEIC)

Option Packages

Factory Installed Packages

6.8L SOHC EFI TRITON 30-VALVE V10 ENGINE

