



2010 Chevrolet Equinox LT w/1LT

NO HAGGLE CASH PRICE! \$5,997

Average Retail Price \$8,735

View this vehicle on our website at sterlingmotorsport.com

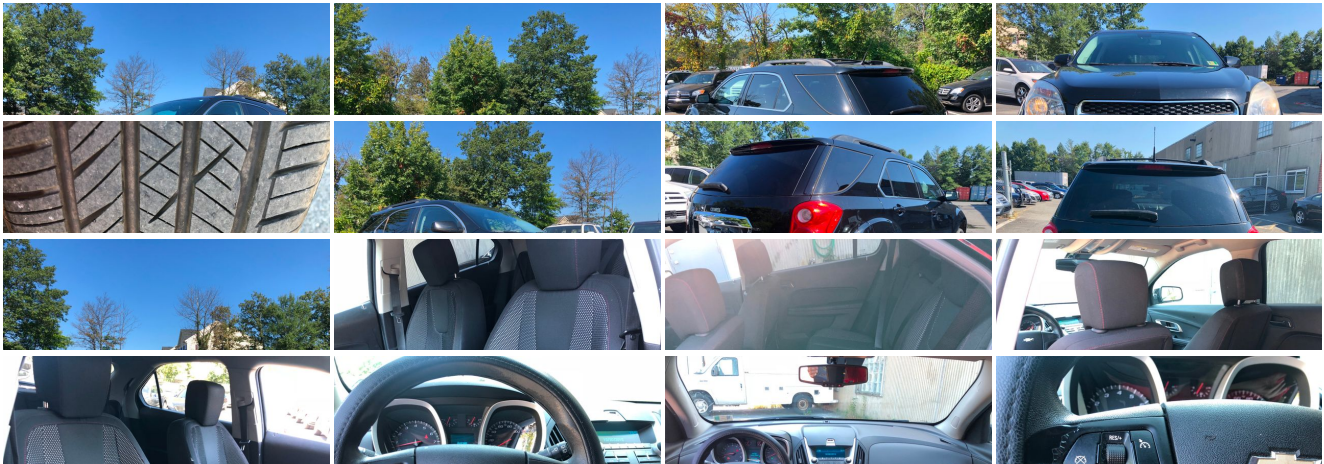
[571-313-1989](tel:571-313-1989)

9 Douglas Court Unit 101 , Sterling, VA 20166

Photos

Details

Contact





Specifications:

Year:	2010
VIN:	2CNFLEEEY3A6297623
Make:	Chevrolet
Stock:	297623
Model/Trim:	Equinox LT w/1LT
Condition:	Pre-Owned
Body:	SUV
Exterior:	Black Granite Metallic
Engine:	ENGINE, 3.0L DOHC, V6 SIDI (SPARK IGNITION DIRECT INJECTION)
Interior:	Cloth
Mileage:	147,163
Drivetrain:	All Wheel Drive
Economy:	City 17 / Highway 24

Vehicle Description

Installed Options

Interior

- Seats, Deluxe front bucket - LT Interior, Premium Cloth
- Seat adjuster front, driver 2-way fore/aft power lumbar and power 2-way height adjuster
- Floor mats, carpeted first and second row
- Steering wheel, comfort grip vinyl with integrated cruise controls
- Driver Information Center monitors 26 various systems including, Vehicle Information Menu (oil life, tire pressure, standard/metric units) and Trip Information Menu (trip 1, trip 2, fuel range, average fuel economy, instant fuel economy, average vehicle speed) (Includes compass display.)
- Door locks, power programmable with power lockout protection
- Remote Keyless Entry with 2 transmitters, panic button, content theft alarm activation verification and illuminated entry
- Cruise control, electronic with set and resume speed
- Theft-deterrent system, anti-theft alarm and engine immobilizer.
- Lighting, interior with theatre dimming, center-mounted dome, rear cargo area, dual front map lights, ambient lighting on center stack surround, and center console cupholders (Includes ambient lighting on instrument panel and center console.)
- Lighting, dual front map lights
- Seat adjuster rear, 2-way fore/aft adjustment with 60/40 split seatback and 3-way recline
- Console, center with armrest and concealed storage
- Armrest, rear center with dual cup holders - Steering column, tilt and telescopic
- Instrumentation includes speedometer, single trip odometer, fuel level, engine temperature and tachometer
- Compass display included in Driver Information Center (DIC) (Not available with (UE0) OnStar delete.)
- Windows, power with Express-Down on all 4 doors
- Air conditioning, single-zone manual climate control- Defogger, rear-window electric
- Cupholders, 2 front in center console and 2 rear in center armrest with 1 bottle holder in each door
- Power outlets, 4 auxiliary with covers, 12-volt includes 1 front of console, 1 in console, 1 in back of console and 1 in cargo area. (Additional power outlets in front center console.)
- Mirror, inside rearview manual day/night
- Visors, driver and front passenger illuminated vanity mirrors
- Assist handles, front passenger and rear outboards
- Map pocket, front seatback, driver and front passenger

Exterior

- Wheels, 17" (43.2 cm) painted aluminum (Not available with (LF1) 3.0L DOHC V6 SIDI engine)

Option Packages

Factory Installed Packages

ENGINE, 3.0L DOHC, V6 SIDI (SPARK IGNITION DIRECT INJECTION)	
with VVT (Variable Valve Timing) (264 hp [196.8 kW] @ 6950 rpm, 222 lb-ft [299.7 N-m] @ 5100 rpm)	\$1,500
<hr/>	
Option Packages Total	\$1,500

engine.)

- Tires, P225/65R17 all-season, blackwall (Included and only available with (PFF) 17" (43.2 cm) painted aluminum wheels.)
- Tire, compact spare with steel wheel- Luggage rack side rails, roof-mounted, Charcoal
- Bumpers, front and rear body-color with Charcoal lowers
- Moldings, Charcoal lower rocker- Grille, Charcoal with chrome surround
- Headlamps, halogen composite with automatic exterior lamp control
- Glass, deep-tinted (all windows except light-tinted glass on windshield and driver- and front passenger-side glass)
- Mirrors, outside heated power-adjustable, body-color
- Wipers, front variable-speed, intermittent with washer.
- Wiper, rear variable-speed, intermittent with washer
- Liftgate, rear manual with fixed glass- Door handles, body-color

Safety

- Seats, Deluxe front bucket - LT Interior, Premium Cloth
- Seat adjuster front, driver 2-way fore/aft power lumbar and power 2-way height adjuster
- Floor mats, carpeted first and second row
- Steering wheel, comfort grip vinyl with integrated cruise controls
- Driver Information Center monitors 26 various systems including, Vehicle Information Menu (oil life, tire pressure, standard/metric units) and Trip Information Menu (trip 1, trip 2, fuel range, average fuel economy, instant fuel economy, average vehicle speed) (Includes compass display.)
- Door locks, power programmable with power lockout protection
- Remote Keyless Entry with 2 transmitters, panic button, content theft alarm activation verification and illuminated entry
- Cruise control, electronic with set and resume speed
- Theft-deterrent system, anti-theft alarm and engine immobilizer.
- Lighting, interior with theatre dimming, center-mounted dome, rear cargo area, dual front map lights, ambient lighting on center stack surround, and center console cupholders (Includes ambient lighting on instrument panel and center console.)
- Lighting, dual front map lights
- Seat adjuster rear, 2-way fore/aft adjustment with 60/40 split seatback and 3-way recline
- Console, center with armrest and concealed storage
- Armrest, rear center with dual cup holders - Steering column, tilt and telescopic
- Instrumentation includes speedometer, single trip odometer, fuel level, engine temperature and tachometer
- Compass display included in Driver Information Center (DIC) (Not available with (UE0) OnStar delete.)
- Windows, power with Express-Down on all 4 doors
- Air conditioning, single-zone manual climate control- Defogger, rear-window electric
- Cupholders, 2 front in center console and 2 rear in center armrest with 1 bottle holder in each door
- Power outlets, 4 auxiliary with covers, 12-volt includes 1 front of console, 1 in console, 1 in back of console and 1 in cargo area. (Additional power outlets in front center console.)
- Mirror, inside rearview manual day/night
- Visors, driver and front passenger illuminated vanity mirrors
- Assist handles, front passenger and rear outboards
- Map pocket, front seatback, driver and front passenger

Mechanical

- Engine, 2.4L DOHC, 4-cylinder SIDI (Spark Ignition Direct Injection) with VVT (Variable Valve Timing) (182 hp [135.7 kW] @ 6700 rpm, 172 lb-ft [232.2 N-m] @ 4900 rpm) (Not available with (Q6D) 18" (45.7 cm) machined aluminum wheels.)
- Transmission, 6-speed automatic with overdrive (1LH26 or 1LK26 model only.)
- Steering, power-assist, electric-variable Alternator, 120 amps
- Axle, 3.53 final drive ratio (Requires all-wheel drive vehicles and (LAF) 2.4L DOHC 4-cylinder SIDI engine.)
- Drivetrain, all-wheel drive (1LK26 model only.)
- Battery, maintenance free with rundown protection, 525 CCA
- GVWR, 5070 lbs (2300 kg) (Requires all-wheel drive vehicles and (LAF) 2.4L DOHC 4-cylinder SIDI engine.)
- Suspension, front independent MacPherson strut with stabilizer bar, optimally-tuned shocks and hydraulic-ride bushings in front control arms
- Suspension, rear independent multi-link with hydraulic rear trailing arm links and stabilizer bar
- Suspension, Refined Ride- Brakes, 4-wheel antilock, 4-wheel disc Exhaust, single

Price excludes \$699.00 processing fee, registration fees and State and Local sales taxes. 3% surcharge will be added on all CC charges over \$500.00. Deposits are non-refundable. All our sales are based on first-come-first-serve policy. We work very hard to accurately describe our vehicles through text descriptions and elaborate photos. When you purchase a pre-owned vehicle it is not a new vehicle. Any used vehicle can have normal wear and blemishes. Please read the descriptions thoroughly and view all pictures.

Sterling Motorsport

Sterling Motorsport

View this car on our website at sterlingmotorsport.com/6519244

Website: sterlingmotorsport.com

Phone: [571-313-1989](tel:571-313-1989)

Map: [9 Douglas Court Unit 101, Sterling, VA 20166](#)

