

njtruckking.com
856-693-3181
1229 Broadway
Westville, New Jersey
08093

King of Cars and
Trucks

2017 FORD F450 CREW DRW PLATINUM 6.7L DIESEL 13K MILES 1-OWNER 4X4

View this car on our website at njtruckking.com/6515040/ebrochure



Our Price **\$73,900**

Specifications:

Year:	2017
VIN:	1FT8W4DTXHED62574
Make:	FORD F450 CREW DRW
Model/Trim:	PLATINUM 6.7L DIESEL 13K MILES 1-OWNER 4X4
Condition:	Pre-Owned
Body:	Pickup Truck
Exterior:	White
Engine:	ENGINE: 6.7L 4V OHV POWER STROKE V8 TURBO DIESEL B20
Interior:	Black Leather
Mileage:	13,987
Drivetrain:	4 Wheel Drive

~~HARD TO FIND F450 THAT IS LIKE BRAND NEW !
ONE OF A KIND

2017 FORD F450 CREW CAB DRW 4X4 CREW CAB

~PLATINUM~

6.7L POWERSTROKE DIESEL

AUTOMATIC TRANSMISSION

(ONLY 13,987 ORIGINAL / ACTUAL MILES)

1-OWNER

GARAGE KEPT SINCE DAY 1

BEST COLOR COMBO WHITE PLATINUM TRICOAT

ALL THE OPTIONS !

ORIGINAL OWNERS MANUALS

THIS TRUCK IS IN LIKE NEW CONDITION !

YOU WILL NOT FIND A NICER USED 450 ANYWHERE!

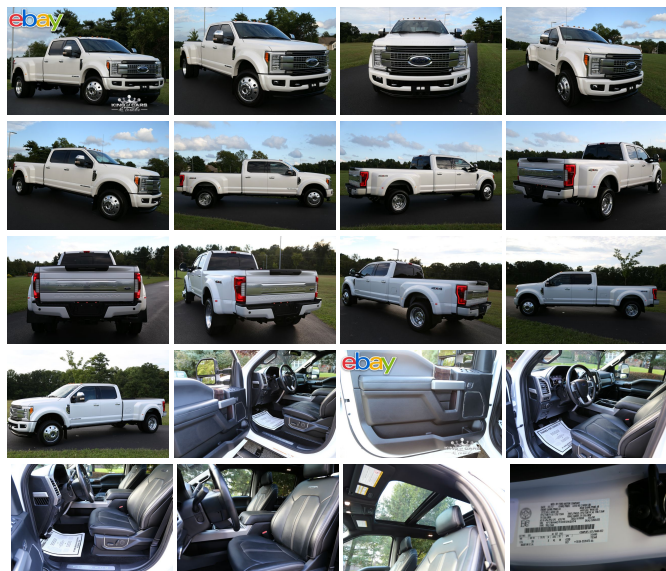
WILL NOT LAST !

BEST OF THE BEST

DON'T SNOOZE AND LOSE BECAUSE YOU WILL NOT FIND ANOTHER LIKE IT !

SAVE THOUSANDS OVER NEW !

\$73,900



Our Location :



2017 FORD F450 CREW DRW PLATINUM 6.7L DIESEL 13K MILES 1-OWNER 4X4

King of Cars and Trucks - 856-693-3181 - View this car on our website at njtruckking.com/6515040/ebrochure

Installed Options

Interior

- Cruise Control w/Steering Wheel Controls
- Driver And Passenger Visor Vanity Mirrors w/Driver And Passenger Illumination
- FOB Controls -inc: Trunk/Hatch/Tailgate and Remote Engine Start
- Flow-Through Console -inc: 110V/400W outlet in rear
- Full Carpet Floor Covering -inc: Carpet Front And Rear Floor Mats
- Gauges -inc: Speedometer, Odometer, Engine Coolant Temp, Tachometer, Turbo/Supercharger Boost, Transmission Fluid Temp, Engine Hour Meter, Trip Odometer and Trip Computer
- Power 1st Row Windows w/Driver And Passenger 1-Touch Up/Down
- Power Door Locks w/Autolock Feature- Power Rear Windows
- Proximity Key For Doors And Push Button Start
- Remote Keyless Entry w/Integrated Key Transmitter, Illuminated Entry and Panic Button
- Trip Computer
- Unique Platinum Leather 40/Console/40 Seats -inc: multi-contour, heated/cooled, 10-way power driver and passenger seats (includes power lumbar), memory, 4-way adjustable driver and passenger headrests and second row armrest
- Voice Activated Dual Zone Front w/Steering Wheel Controls
- 110V/400W Outlet -inc: 1 in-dash mounted outlet and 2nd outlet in the console
- 2 Seatback Storage Pockets- 4 12V DC Power Outlets- Air Filtration
- Day-Night Auto-Dimming Rearview Mirror- Delayed Accessory Power
- Door Mirrors, Steering Wheel and Pedals- Driver Seat- Fade-To-Off Interior Lighting
- Front And Rear Map Lights- Front Center Armrest- Front Cupholder- Full Cloth Headliner
- Full Overhead Console w/Storage and 4 12V DC Power Outlets- Garage Door Transmitter
- HVAC -inc: Underseat Ducts- Heated Leather Steering Wheel w/Auto Tilt-Away
- Illuminated Locking Glove Box
- Instrument Panel Bin, Covered Dashboard Storage, Driver / Passenger And Rear Door Bins
- Integrated Navigation System w/Voice Activation
- Interior Trim -inc: Metal-Look Instrument Panel Insert, Genuine Wood/Chrome Door Panel Insert, Genuine Wood/Leather Console Insert and Chrome/Metal-Look Interior Accents
- Keyed- Ignition Door Trim Insert- Manual Adjustable Rear Head Restraints

Option Packages

Factory Installed Packages

ENGINE: 6.7L 4V OHV POWER STROKE V8 TURBO DIESEL B20
-inc: 4 valve OHV, manual push-button engine-exhaust braking and intelligent oil-life monitor

- Keypad- Leather Door Trim Insert- Manual Adjustable Rear Head Restraints
- Outside Temp Gauge- Passenger Seat- Perimeter Alarm- Power Adjustable Pedals
- Power Tilt/Telescoping Steering Column- Rear Cupholder
- Securilock Anti-Theft Ignition (pats) Engine Immobilizer
- Split-Bench Front Facing Rear Seat- Systems Monitor
- Underhood And Pickup Cargo Box Lights- Urethane Gear Shift Knob

Exterior

- Fully Automatic Aero-Composite Led Low/High Beam Auto High-Beam Daytime Running Lights Preference Setting Headlamps w/Delay-Off
- Tailgate/Rear Door Lock Included w/Power Door Locks- Tires: 225/70Rx19.5G BSW A/S
- Aluminum Grille- Aluminum Panels
- Black Side Windows Trim and Black Front Windshield Trim
- Body-Colored Front Bumper w/2 Tow Hooks- Body-Colored Rear Step Bumper
- Cab Clearance Lights- Cargo Lamp w/High Mount Stop Light- Chrome Door Handles
- Chrome Power Heated Side Mirrors w/Convex Spotter, Power Folding and Turn Signal Indicator
- Clearcoat Paint- Deep Tinted Glass- Front Fog Lamps- Front License Plate Bracket
- Full-Size Spare Tire Stored Underbody w/Crankdown- LED Brakelights
- Perimeter/Approach Lights- Power Extendable Trailer Style Mirrors
- Power Rear Window w/Defroster- Power Running Boards
- Rain Detecting Variable Intermittent Wipers- Regular Box Style- Retractable Rear Step
- Steel Spare Wheel- Tailgate Rear Cargo Access
- Wheels: 19.5" Forged Polished Aluminum -inc: bright hub covers/center ornaments

Safety

- Cruise Control w/Steering Wheel Controls
- Driver And Passenger Visor Vanity Mirrors w/Driver And Passenger Illumination
- FOB Controls -inc: Trunk/Hatch/Tailgate and Remote Engine Start
- Flow-Through Console -inc: 110V/400W outlet in rear
- Full Carpet Floor Covering -inc: Carpet Front And Rear Floor Mats
- Gauges -inc: Speedometer, Odometer, Engine Coolant Temp, Tachometer, Turbo/Supercharger Boost, Transmission Fluid Temp, Engine Hour Meter, Trip Odometer and Trip Computer
- Power 1st Row Windows w/Driver And Passenger 1-Touch Up/Down
- Power Door Locks w/Autolock Feature- Power Rear Windows
- Proximity Key For Doors And Push Button Start
- Remote Keyless Entry w/Integrated Key Transmitter, Illuminated Entry and Panic Button
- Trip Computer
- Unique Platinum Leather 40/Console/40 Seats -inc: multi-contour, heated/cooled, 10-way power driver and passenger seats (includes power lumbar), memory, 4-way adjustable driver and passenger headrests and second row armrest
- Voice Activated Dual Zone Front w/Steering Wheel Controls
- 110V/400W Outlet -inc: 1 in-dash mounted outlet and 2nd outlet in the console
- 2 Seatback Storage Pockets- 4 12V DC Power Outlets- Air Filtration
- Day-Night Auto-Dimming Rearview Mirror- Delayed Accessory Power
- Door Mirrors, Steering Wheel and Pedals- Driver Seat- Fade-To-Off Interior Lighting
- Front And Rear Map Lights- Front Center Armrest- Front Cupholder- Full Cloth Headliner
- Full Overhead Console w/Storage and 4 12V DC Power Outlets- Garage Door Transmitter
- HVAC -inc: Underseat Ducts- Heated Leather Steering Wheel w/Auto Tilt-Away
- Illuminated Locking Glove Box
- Instrument Panel Bin, Covered Dashboard Storage, Driver / Passenger And Rear Door Bins
- Integrated Navigation System w/Voice Activation
- Interior Trim -inc: Metal-Look Instrument Panel Insert, Genuine Wood/Chrome Door Panel Insert, Genuine Wood/Leather Console Insert and Chrome/Metal-Look Interior Accents
- Keypad- Leather Door Trim Insert- Manual Adjustable Rear Head Restraints
- Outside Temp Gauge- Passenger Seat- Perimeter Alarm- Power Adjustable Pedals
- Power Tilt/Telescoping Steering Column- Rear Cupholder
- Securilock Anti-Theft Ignition (pats) Engine Immobilizer
- Split-Bench Front Facing Rear Seat- Systems Monitor
- Underhood And Pickup Cargo Box Lights- Urethane Gear Shift Knob

Mechanical

- Class V Towing Equipment -inc: Harness, Hitch, Brake Controller and Trailer Sway Control
- Transmission: TorqShift 6-Speed Automatic -inc: (6R140), SelectShift
- 4-Wheel Disc Brakes w/4-Wheel ABS, Front And Rear Vented Discs, Brake Assist and Hill Hold Control
- 48 Gal. Fuel Tank- 50-State Emissions System- 5320# Maximum Payload
- 78-Amp/Hr 750CCA Maintenance-Free Battery w/Run Down Protection
- Auto Locking Hubs- Dual Rear Wheels- Electronic Transfer Case
- Engine: 6.7L 4V OHV Power Stroke V8 Turbo Diesel B20 -inc: 4 valve OHV, manual push-button engine-exhaust braking and intelligent oil-life monitor

- Firm Suspension- Front And Rear Anti-Roll Bars- Front Suspension w/Coil Springs
- GVWR: 14,000 lb Payload Package- HD 332 Amp Alternator- HD Shock Absorbers
- Hydraulic Power-Assist Speed-Sensing Steering- Leaf Rear Suspension w/Leaf Springs
- Limited Slip w/4.30 Axle Ratio- Part-Time Four-Wheel Drive
- Single Stainless Steel Exhaust w/Chrome Tailpipe Finisher

King of Cars and Trucks

njtruckking.com

856-693-3181

1229 Broadway

Westville, New Jersey 08093

© 2024 AutoRevo - All rights reserved. - Powered by [AutoRevo](#)