

2018 Chevrolet Impala Premier

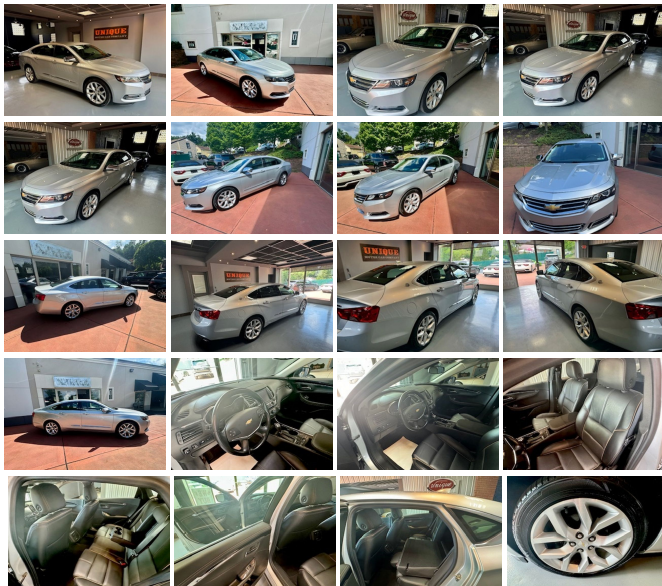
View this car on our website at uniquemotorcarsonline.com/6512753/ebrochure



Our Price **\$12,900**

Specifications:

Year:	2018
VIN:	2G1125S39J9113707
Make:	Chevrolet
Stock:	113707
Model/Trim:	Impala Premier
Condition:	Pre-Owned
Body:	Sedan
Exterior:	Silver Ice Metallic
Engine:	ENGINE, 3.6L DOHC V6 DI WITH VARIABLE VALVE TIMING (VVT)
Interior:	Jet Black Leather
Transmission:	TRANSMISSION, 6-SPEED AUTOMATIC, ELECTRONICALLY-CONTROLLED WITH OVERDRIVE
Mileage:	82,697
Drivetrain:	Front Wheel Drive
Economy:	City 18 / Highway 28



2018 Chevrolet Impala V-6 Premier sedan, silver ice metallic with the black leather interior, navigation, blind spot monitor, cross traffic alert, back up camera, HID headlamps, Bose sound, power heated front seats, power heated exterior mirrors, remote engine start, keyless entry, cruise control, electronic stability control, fog lamps, pass thru rear seat, rear defroster, smart device integration, wi-fi hotspot, homelink, leather steering wheel, daytime running lights, power windows, power locks, remote trunk release, turn signal mirrors, and many other Chevrolet amenities. Locally owned and traded. Call or email for more information. Visit us on the web at www.UniqueMotorCarsonline.com

2018 Chevrolet Impala Premier

Unique Motor Car Company - (412) 221-1700 - View this car on our website at uniquemotorcarsonline.com/6512753/ebrochure

Our Location :



2018 Chevrolet Impala Premier

Unique Motor Car Company - (412) 221-1700 - View this car on our website at uniquemotorcarsonline.com/6512753/ebrochure

Installed Options

Interior

- Seats, front bucket- Vent, rear console, air- Windows, power with Express-Down on all
- Air conditioning, dual-zone automatic climate control with individual climate settings for driver and front passenger
- Armrest, rear center- Assist handles, driver, front passenger and rear outboard
- Brake, park, electronic push button powered located on instrument panel left of steering wheel
- Cargo convenience net, trunk- Compass display, located in the Driver Information Center
- Cruise control, electronic with set and resume speed - Defogger, rear-window
- Driver Information Center, color display includes trip/fuel information, vehicle information and vehicle messages
- Floor mats, carpeted front- Floor mats, carpeted rear
- Head restraints, 4-way adjustable, up/down, fore/aft, front
- Head restraints, rear, adjustable, folding
- Instrumentation, analog with speedometer, tachometer, engine temperature and fuel gauge with color Driver Information Center
- Keyless Open- Keyless Start- Lamp, interior, ambient instrument panel
- Lamp, interior, ambient, door
- Lighting, interior with theater dimming, delayed entry/exit, glovebox and trunk
- Map pockets, driver and front passenger seatbacks
- Mirror, inside rearview manual day/night
- Power outlet, 1, auxiliary, 12-volt located inside console
- Power outlet, 120-volt, located on the rear of center console
- Power outlet, auxiliary, 12-volt located on rear of console - Remote vehicle starter system
- Seat adjuster, driver 8-way power- Seat adjuster, driver power lumbar
- Seat adjuster, front passenger 8-way power- Seat adjuster, front passenger power lumbar
- Seat trim, perforated leather-appointed- Seat, rear 60/40 split-folding
- Seats, heated driver and front passenger - Shift knob, leather-wrapped
- Steering column, manual tilt and telescopic- Steering wheel, 4-spoke leather-wrapped
- Storage compartment, front, uplevel with cover

Option Packages

Factory Installed Packages

ENGINE, 3.6L DOHC V6 DI WITH VARIABLE VALVE TIMING (VVT)
(305 hp [227.4 kW] @ 6800 rpm, 264 lb-ft of torque [356.4 N-m] @ 5200 rpm)

TRANSMISSION, 6-SPEED AUTOMATIC, ELECTRONICALLY-CONTROLLED WITH OVERDRIVE

STEERING COLUMN, POWER TILT AND TELESCOPIC

SILVER ICE METALLIC

PREMIER PREFERRED EQUIPMENT GROUP
includes Standard Equipment

AUDIO SYSTEM, CHEVROLET MYLINK RADIO WITH NAVIGATION AND 8" DIAGONAL COLOR TOUCH-SCREEN, AM/FM STEREO

with seek-and-scan and digital clock, includes CD player; Bluetooth streaming audio for music and select phones; voice-activated technology for radio and phone; featuring Android Auto and Apple CarPlay capability for compatible phone and Shop with the ability to browse, select and install apps to your vehicle. Apps include Pandora, iHeartRadio, The Weather Channel and more

LEFT REAR PERFORATED LEATHER-APPOINTED SEAT TRIM

- Storage, innovative, hidden behind 8" diagonal touch screen with valet-mode lockable, dedicated umbrella storage in front door and hidden storage in trunk
- Theft-deterrent system- Trunk opening touch pad
- Trunk release, power located inside on instrument panel left of steering wheel
- Universal Home Remote includes garage door opener, 3-channel programmable
- Visors, driver and front passenger illuminated vanity mirrors
- Window, power with driver Express-Up and Down

Exterior

- Tire, compact spare, T125/70R17- Wheel, compact spare, 17" (43.2 cm) steel
- Door handles, chrome with body-color strip
- Glass, acoustic, laminated front-side and windshield
- Headlamp control, automatic on and off- Headlamps, high intensity discharge
- Mirrors, outside heated power-adjustable manual-folding with integrated turn signal indicators and ground illumination (Chrome mirror caps.)
- Sill plates, front, chrome- Tires, P245/45R19 all-season, blackwall
- Wheels, 19" (48.3 cm) machined-face aluminum- Wipers, front intermittent

Safety

- Seats, front bucket- Vent, rear console, air- Windows, power with Express-Down on all
- Air conditioning, dual-zone automatic climate control with individual climate settings for driver and front passenger
- Armrest, rear center- Assist handles, driver, front passenger and rear outboard
- Brake, park, electronic push button powered located on instrument panel left of steering wheel
- Cargo convenience net, trunk- Compass display, located in the Driver Information Center
- Cruise control, electronic with set and resume speed - Defogger, rear-window
- Driver Information Center, color display includes trip/fuel information, vehicle information and vehicle messages
- Floor mats, carpeted front- Floor mats, carpeted rear
- Head restraints, 4-way adjustable, up/down, fore/aft, front
- Head restraints, rear, adjustable, folding
- Instrumentation, analog with speedometer, tachometer, engine temperature and fuel gauge with color Driver Information Center
- Keyless Open- Keyless Start- Lamp, interior, ambient instrument panel
- Lamp, interior, ambient, door
- Lighting, interior with theater dimming, delayed entry/exit, glovebox and trunk
- Map pockets, driver and front passenger seatbacks
- Mirror, inside rearview manual day/night
- Power outlet, 1, auxiliary, 12-volt located inside console
- Power outlet, 120-volt, located on the rear of center console
- Power outlet, auxiliary, 12-volt located on rear of console - Remote vehicle starter system
- Seat adjuster, driver 8-way power- Seat adjuster, driver power lumbar
- Seat adjuster, front passenger 8-way power- Seat adjuster, front passenger power lumbar
- Seat trim, perforated leather-appointed- Seat, rear 60/40 split-folding
- Seats, heated driver and front passenger - Shift knob, leather-wrapped
- Steering column, manual tilt and telescopic- Steering wheel, 4-spoke leather-wrapped
- Storage compartment, front, uplevel with cover
- Storage, innovative, hidden behind 8" diagonal touch screen with valet-mode lockable, dedicated umbrella storage in front door and hidden storage in trunk
- Theft-deterrent system- Trunk opening touch pad
- Trunk release, power located inside on instrument panel left of steering wheel
- Universal Home Remote includes garage door opener, 3-channel programmable
- Visors, driver and front passenger illuminated vanity mirrors
- Window, power with driver Express-Up and Down

Mechanical

- Alternator, 150 amps- Axle, 2.77 final drive ratio
- Battery, 70AH, maintenance free with rundown protection, heavy-duty 512 cold-cranking amps
- Brake lining, high-performance, noise and dust performance with FNC rotors
- Brakes, 4-wheel antilock, 4-wheel disc- Chassis equipment, front strut assembly
- Engine, 3.6L DOHC V6 DI with Variable Valve Timing (VVT) (305 hp [227.4 kW] @ 6800 rpm, 264 lb-ft of torque [356.4 N-m] @ 5200 rpm) (Includes E85 FlexFuel-capable with (FE9) Federal emissions. When ordering (NE1/YF5) Northeast/California emissions for E85 include (NC7) Federal emissions override for Fleet or Government order types only.)
- Exhaust, dual-outlet stainless-steel with bright tips integrated in fascia - Front wheel drive
- Hill Start Assist- Steering, power, variable assist, electric- Suspension, rear 4-link
- Transmission, 6-speed automatic, electronically-controlled with overdrive

GET DETAILS, PERFORATED LEATHER APPOINTED SEAT TRIM

TIRES, P245/45R19 ALL-SEASON, BLACKWALL

WHEELS, 19" (48.3 CM) MACHINED-FACE ALUMINUM

Unique Motor Car Company

uniquemotorcarsonline.com

(412) 221-1700

770 Bower Hill Rd.

Bridgeville, Pennsylvania 15017

© 2024 AutoRevo - All rights reserved. - Powered by [AutoRevo](#)