



## 1997 MERCEDES-BENZ S600 ORIGINAL 71K MLS VERY RARE LUXURY SEDAN

**Contact Sales 310-987-1212**

**Our Price \$17,990**

View this vehicle on our website at [boutiqueautosales.com](http://boutiqueautosales.com)

Boutique Auto Sales

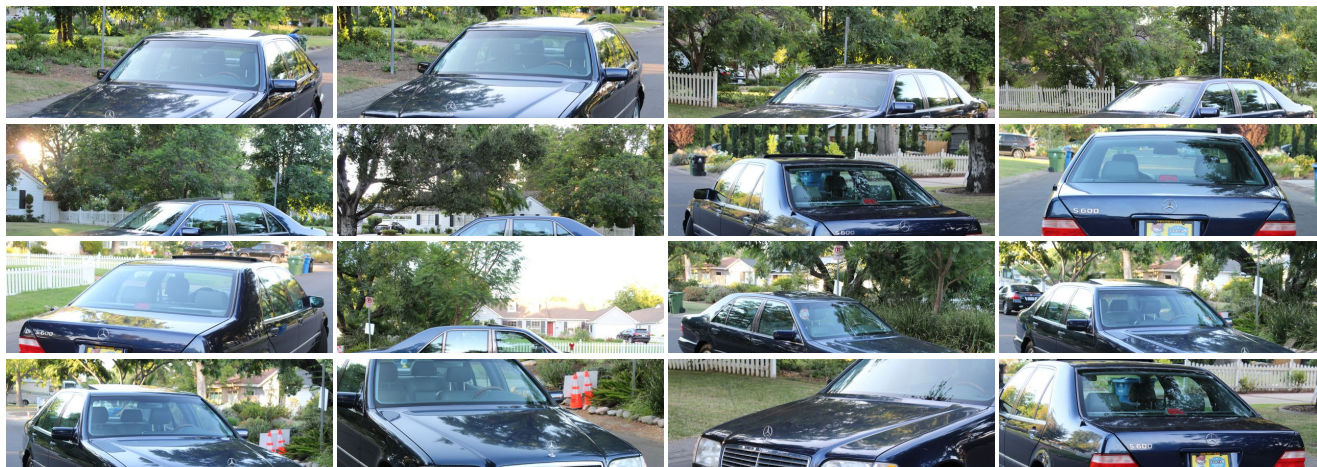
[310-987-1212](tel:310-987-1212)

5950 Laurel Canyon Blvd, North Hollywood, CA 91607

Photos

Details

Contact





# Specifications:

<b>Year:</b>	1997
<b>VIN:</b>	<a href="#">WDBG A57G4VA343955</a>
<b>Make:</b>	MERCEDES-BENZ
<b>Stock:</b>	3955
<b>Model/Trim:</b>	S600 ORIGINAL 71K MLS VERY RARE LUXURY SEDAN
<b>Condition:</b>	Pre-Owned
<b>Body:</b>	Sedan
<b>Exterior:</b>	Midnight Blue
<b>Engine:</b>	6.0L twin-DOHC SMPI 48-valve aluminum-alloy V12 engine
<b>Interior:</b>	Grey Leather
<b>Mileage:</b>	71,890
<b>Drivetrain:</b>	Rear Wheel Drive
<b>Economy:</b>	City 13 / Highway 19

# Vehicle Description

Installed Options	Option Packages						
<b>Interior</b> <ul style="list-style-type: none"> <li>- "Parking brake on" audible alert</li> <li>- 12-way pwr front adjustable seats w/pneumatically adjustable lumbar support, multi-contour front seats</li> <li>- 3 position memory for front seats/steering column/mirrors/headrests</li> <li>- AM/FM/weather band stereo radio w/auto-reverse cassette-inc: seek/scan, CD changer controls, anti-theft coding, speed compensated volume</li> <li>- Active charcoal climate control filter- Anti-theft alarm system-inc: starter interrupt</li> <li>- Auto dimming rearview mirror</li> <li>- Automatic climate control-inc: separate temp controls, air/dust filters, sun/smog sensors, engine heat recirculation feature</li> <li>- Automatic stereo/cellular antenna- Bose "Beta" sound system w/11-speakers</li> <li>- Burl walnut wood trim- Color-keyed leather-covered steering wheel- Cruise control</li> <li>- Door storage pockets- Dual front seat memory feature</li> <li>- Electrically heated front/rear seats- Electrically operated rear window sunshades</li> <li>- Electrically operated tilt/telescoping steering column w/memory</li> <li>- Electro-pneumatic door/trunk closing assist- Front courtesy light w/delayed shutoff</li> <li>- Front reading lamps- Front/rear center storage armrests</li> <li>- Front/rear door panel storage compartments- Front/rear illuminated visor vanity mirrors</li> <li>- Instrumentation-inc: speedometer, tachometer, fuel/coolant temp/oil pressure gauges, fuel economy indicator, electronic odometer, resettable tripmeter, analog quartz clock, digital outside temp indicator</li> <li>- Integrated portable cellular telephone (dealer installed)</li> <li>- Multi-tone exclusive Nappa leather upholstery</li> <li>- Pwr dual-pane side windows w/express up &amp; down</li> <li>- Rear compartment air conditioning w/dual temp controls- Rear courtesy light</li> <li>- Rear reading lamps</li> <li>- Remote infrared locking system-inc: remote window closing, remote trunk/fuel filler locking, auto interior light activation</li> <li>- Remote retractable rear head restraints- Remote trunk release w/valet lockout</li> <li>- Trunk mounted compact disc changer- Universal integrated garage door opener</li> <li>- Velour floor carpeting/mats- Walnut &amp; leather trim shift lever</li> <li>- Warning lights-inc: seat belt, exterior light failure, brake, parking brake on, air bag, traction control, check engine, fuel/oil/coolant/washer fluid levels</li> </ul>	<b>Factory Installed Packages</b> <hr/> <table> <tr> <td>FOUR PLACE ELECTRICALLY ADJUSTABLE SEATING</td><td>\$5,460</td></tr> </table> <hr/> <table> <tr> <td>PARKTRONIC SENSOR SYSTEM</td><td>\$960</td></tr> </table> <hr/> <table> <tr> <td>Option Packages Total</td><td>\$6,420</td></tr> </table>	FOUR PLACE ELECTRICALLY ADJUSTABLE SEATING	\$5,460	PARKTRONIC SENSOR SYSTEM	\$960	Option Packages Total	\$6,420
FOUR PLACE ELECTRICALLY ADJUSTABLE SEATING	\$5,460						
PARKTRONIC SENSOR SYSTEM	\$960						
Option Packages Total	\$6,420						
<b>Exterior</b> <ul style="list-style-type: none"> <li>- Auto dimming driver mirror- Automatic retracting trunk handle</li> <li>- Dual pwr-folding heated electric remote outside rearview mirrors</li> </ul>							

- Dual pwr locking heated electric remote outside rearview mirrors
- Dual-pane side windows
- Electrically operated sliding glass sunroof w/rear pop-up feature- Rear foglamp
- Tinted glass (all windows)
- Windshield wipers w/heated washer system, rain-sensing activation
- Xenon gas-discharge headlamps w/wipers & heated washers

## Safety

- "Parking brake on" audible alert
- 12-way pwr front adjustable seats w/pneumatically adjustable lumbar support, multi-contour front seats
- 3 position memory for front seats/steering column/mirrors/headrests
- AM/FM/weather band stereo radio w/auto-reverse cassette-inc: seek/scan, CD changer controls, anti-theft coding, speed compensated volume
- Active charcoal climate control filter- Anti-theft alarm system-inc: starter interrupt
- Auto dimming rearview mirror
- Automatic climate control-inc: separate temp controls, air/dust filters, sun/smog sensors, engine heat recirculation feature
- Automatic stereo/cellular antenna- Bose "Beta" sound system w/11-speakers
- Burl walnut wood trim- Color-keyed leather-covered steering wheel- Cruise control
- Door storage pockets- Dual front seat memory feature
- Electrically heated front/rear seats- Electrically operated rear window sunshades
- Electrically operated tilt/telescoping steering column w/memory
- Electro-pneumatic door/trunk closing assist- Front courtesy light w/delayed shutoff
- Front reading lamps- Front/rear center storage armrests
- Front/rear door panel storage compartments- Front/rear illuminated visor vanity mirrors
- Instrumentation-inc: speedometer, tachometer, fuel/coolant temp/oil pressure gauges, fuel economy indicator, electronic odometer, resettable tripmeter, analog quartz clock, digital outside temp indicator
- Integrated portable cellular telephone (dealer installed)
- Multi-tone exclusive Nappa leather upholstery
- Pwr dual-pane side windows w/express up & down
- Rear compartment air conditioning w/dual temp controls- Rear courtesy light
- Rear reading lamps
- Remote infrared locking system-inc: remote window closing, remote trunk/fuel filler locking, auto interior light activation
- Remote retractable rear head restraints- Remote trunk release w/valet lockout
- Trunk mounted compact disc changer- Universal integrated garage door opener
- Velour floor carpeting/mats- Walnut & leather trim shift lever
- Warning lights-inc: seat belt, exterior light failure, brake, parking brake on, air bag, traction control, check engine, fuel/oil/coolant/washer fluid levels

## Mechanical

- 16" X 7" aluminum-alloy wheels- 235/60HR16 all-season SBR tires
- 26.4 gallon fuel tank
- 5-speed electronically controlled automatic transmission-inc: "winter" mode, adaptive controls, OD
- 6.0L twin-DOHC SMPI 48-valve aluminum-alloy V12 engine- Adaptive damping system
- Anti-lock braking system (ABS)- Control area network data management system
- Electronic Stability Program vehicle control system- Front/rear brake proportioning
- Fully electronic ignition system w/knock sensor timing control
- Hydraulic 4-wheel pwr-assisted disc brakes (front/rear ventilated)
- Independent double wishbone front suspension w/gas shock absorbers, coil springs, anti-dive geometry, positive offset steering, stabilizer bar
- Independent five-link rear suspension w/anti-lift/anti-squat/alignment control geometry, coil springs, stabilizer bar, gas shock absorbers
- Monocoque body construction- Rear axle automatic level control- Rear wheel drive
- Speed-dependent pwr-assisted recirculating-ball steering- Variable intake valve timing

Boutique Auto Sales

Boutique Auto Sales

View this car on our website at [boutiqueautosales.com/6509686](http://boutiqueautosales.com/6509686)

Website: [boutiqueautosales.com](http://boutiqueautosales.com)

Phone: [310-987-1212](tel:310-987-1212)

Map: [5950 Laurel Canyon Blvd, North Hollywood, CA 91607](#)

