

## 2015 FORD F550 XLT JERR -DAN 2-CAR ROLLBACK 6.8L V10 LOW MILES 1-OWNER

View this car on our website at [njtruckking.com/6508908/ebrochure](http://njtruckking.com/6508908/ebrochure)



Our Price **\$39,900**

### Specifications:

<b>Year:</b>	2015
<b>VIN:</b>	1FDUF5GY1FEB40753
<b>Make:</b>	FORD F550 XLT JERR
<b>Model/Trim:</b>	-DAN 2-CAR ROLLBACK 6.8L V10 LOW MILES 1-OWNER
<b>Condition:</b>	Pre-Owned
<b>Body:</b>	Pickup Truck
<b>Exterior:</b>	White
<b>Engine:</b>	ENGINE: 6.8L 3-VALVE SOHC EFI NA V10
<b>Interior:</b>	Gray Cloth
<b>Mileage:</b>	156,327
<b>Drivetrain:</b>	Rear Wheel Drive

~~  
ULTRA RARE ROLLBACK OWNED BY CAR DEALER  
ONLY USED TO HAUL CARS TO LOCAL AUTO AUCTIONS

2015 FORD F550 2-CAR ROLLBACK

~XLT PACKAGE~

6.8L V10

AUTOMATIC TRANSMISSION

( 156,327 ORIGINAL MILES )

1-OWNER

1-DRIVER

METICULOUSLY MAINTAINED

JERR-DAN STEEL BED

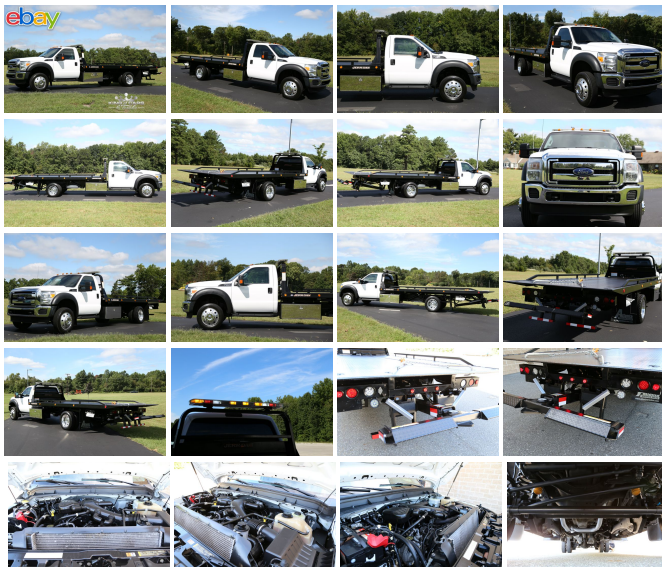
W/WHEELLIFT

STROBE LIGHT PACKAGE

DUAL TOOLBOX

ALCOA WHEELS

LED LIGHTS



BRAND NEW TIRES !!!BEST COLOR COMBO

ALL THE OPTIONS !

STROBE LIGHTS

THIS TRUCK IS IN EXCELLENT CONDITION !

TRUCK IS SPOTLESS!

YOU WILL NOT FIND A NICER USED ROLLBACK ANYWHERE IN THIS PRICE RANGE!

WILL NOT LAST !

SAVE THOUSANDS OVER NEW !!!

\$39,900

2015 FORD F550 XLT JERR -DAN 2-CAR ROLLBACK 6.8L V10 LOW MILES 1-OWNER

King of Cars and Trucks - 856-693-3181 - View this car on our website at [njtruckking.com/6508908/ebrochure](http://njtruckking.com/6508908/ebrochure)

#### Our Location :



2015 FORD F550 XLT JERR -DAN 2-CAR ROLLBACK 6.8L V10 LOW MILES 1-OWNER

King of Cars and Trucks - 856-693-3181 - View this car on our website at [njtruckking.com/6508908/ebrochure](http://njtruckking.com/6508908/ebrochure)

### Installed Options

#### Interior

- 4-Way Driver Seat -inc: Manual Recline, Fore/Aft Movement and Manual Lumbar Support
- Cloth 40/20/40 Split Bench Seat -inc: driver side manual lumbar support, 20% center under seat storage, center armrest, cupholder, storage and 4-way adjustable driver and passenger headrests
- Front Seats w/Manual Driver Lumbar
- Full Carpet Floor Covering -inc: Carpet Front Floor Mats - Power Door Locks

### Option Packages

#### Factory Installed Packages

ENGINE: 6.8L 3-VALVE SOHC EFI NA V10

- Full Carpet Floor Covering -inc: Carpet Front Floor Mats - Power Door Locks
- Remote Keyless Entry w/Integrated Key Transmitter, Illuminated Entry and Panic Button
- 3 12V DC Power Outlets
- 4-Way Passenger Seat -inc: Manual Recline and Fore/Aft Movement - Analog Display
- Cruise Control w/Steering Wheel Controls- Day-Night Rearview Mirror
- Delayed Accessory Power- Driver And Passenger Visor Vanity Mirrors
- Fade-To-Off Interior Lighting- Front Cupholder- Front Map Lights- Full Cloth Headliner
- Gauges -inc: Speedometer, Odometer, Oil Pressure, Engine Coolant Temp, Tachometer, Transmission Fluid Temp, Engine Hour Meter and Trip Odometer
- Glove Box- Instrument Panel Bin, Dashboard Storage, Driver And Passenger Door Bins
- Interior Trim -inc: Chrome Interior Accents - Manual Air Conditioning
- Manual Tilt/Telescoping Steering Column- Manual w/Tilt Front Head Restraints
- Outside Temp Gauge- Perimeter Alarm
- Power 1st Row Windows w/Driver And Passenger 1-Touch Up/Down
- Securilock Anti-Theft Ignition (pats) Engine Immobilizer- Systems Monitor
- Underhood Lights- Urethane Gear Shift Knob

## Exterior

- Black Power Heated Side Mirrors w/Convex Spotter, Manual Folding and Turn Signal Indicator
- Deep Tinted Glass- Tires: 225/70R19.5G BSW AS
- Wheels: 19.5" Argent Painted Steel -inc: Hub covers/center ornaments not included
- Aero-Composite Halogen Headlamps- Black Door Handles- Black Fender Flares
- Black Side Windows Trim and Black Front Windshield Trim - Cab Clearance Lights
- Chrome Front Bumper w/2 Tow Hooks- Chrome Grille- Clearcoat Paint
- Fixed Rear Window- Front License Plate Bracket- Fully Galvanized Steel Panels
- Manual Extendable Trailer Style Mirrors- Perimeter/Approach Lights
- Variable Intermittent Wipers

## Safety

- 4-Way Driver Seat -inc: Manual Recline, Fore/Aft Movement and Manual Lumbar Support
- Cloth 40/20/40 Split Bench Seat -inc: driver side manual lumbar support, 20% center under seat storage, center armrest, cupholder, storage and 4-way adjustable driver and passenger headrests
- Front Seats w/Manual Driver Lumbar
- Full Carpet Floor Covering -inc: Carpet Front Floor Mats - Power Door Locks
- Remote Keyless Entry w/Integrated Key Transmitter, Illuminated Entry and Panic Button
- 3 12V DC Power Outlets
- 4-Way Passenger Seat -inc: Manual Recline and Fore/Aft Movement - Analog Display
- Cruise Control w/Steering Wheel Controls- Day-Night Rearview Mirror
- Delayed Accessory Power- Driver And Passenger Visor Vanity Mirrors
- Fade-To-Off Interior Lighting- Front Cupholder- Front Map Lights- Full Cloth Headliner
- Gauges -inc: Speedometer, Odometer, Oil Pressure, Engine Coolant Temp, Tachometer, Transmission Fluid Temp, Engine Hour Meter and Trip Odometer
- Glove Box- Instrument Panel Bin, Dashboard Storage, Driver And Passenger Door Bins
- Interior Trim -inc: Chrome Interior Accents - Manual Air Conditioning
- Manual Tilt/Telescoping Steering Column- Manual w/Tilt Front Head Restraints
- Outside Temp Gauge- Perimeter Alarm
- Power 1st Row Windows w/Driver And Passenger 1-Touch Up/Down
- Securilock Anti-Theft Ignition (pats) Engine Immobilizer- Systems Monitor
- Underhood Lights- Urethane Gear Shift Knob

## Mechanical

- Transmission: TorqShift 5-Speed Automatic- 10986# Maximum Payload
- 175 Amp Alternator- 4-Wheel Disc Brakes w/4-Wheel ABS, Front And Rear Vented Discs
- 4.88 Axle Ratio- 40 Gal. Fuel Tank
- 78-Amp/Hr 750CCA Maintenance-Free Battery w/Run Down Protection
- Engine: 6.8L 3-Valve SOHC EFI NA V10- Firm Suspension
- Front And Rear Anti-Roll Bars- Front Suspension w/Coil Springs
- GVWR: 18,000 lbs Payload Package- HD Shock Absorbers
- Hydraulic Power-Assist Steering- Leaf Rear Suspension w/Leaf Springs
- Rear-Wheel Drive- Single Stainless Steel Exhaust
- Towing w/Harness and Brake Controller- Transmission w/Oil Cooler- Upfitter Switches

856-693-3181

1229 Broadway

Westville, New Jersey 08093

© 2024 AutoRevo - All rights reserved. - Powered by AutoRevo