

2016 RAM 5500 SLT 4X4 ROLLBACK 6.7L CUMMINS DIESEL LOW MILES 1-OWNER

View this car on our website at njtruckking.com/6501029/ebrochure



Our Price **\$43,900**

Specifications:

Year:	2016
VIN:	3C7WRNDL8GG153218
Make:	RAM 5500 SLT 4X4
Model/Trim:	ROLLBACK 6.7L CUMMINS DIESEL LOW MILES 1-OWNER
Condition:	Pre-Owned
Body:	Pickup Truck
Exterior:	White
Engine:	ENGINE: 6.7L I6 CUMMINS TURBO DIESEL
Interior:	Gray
Mileage:	183,125
Drivetrain:	4 Wheel Drive

~~THIS TRUCK WILL NOT LAST LONG !!

ULTRA RARE ROLLBACK OWNED BY TIRE DEALER
ONE OF A KIND

2016 RAM 5500 2-CAR ROLLBACK

4X4

~SLT PACKAGE~

6.7L CUMMINS TURBO DIESEL

AUTOMATIC TRANSMISSION

(183,125 MILES)

1-OWNER

1-DRIVER

METICULOUSLY MAINTAINED

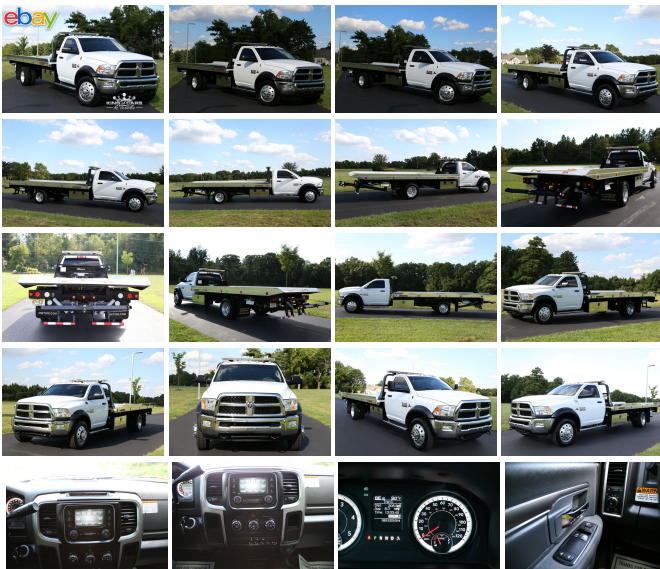
JERR-DAN ALUMINUM BED

W/WHEELLIFT

STROBE LIGHT PACKAGE

DUAL TOOLBOX

ALCOA WHEELS



LED LIGHTS

ALL CHAINS AND STRAPS INCLUDED ECT..

BEST COLOR COMBO

BRAND NEW GOOD YEAR TIRES

ALL THE OPTIONS !

STROBE LIGHTS

LED LIGHTS

ORIGINAL OWNERS MANUALS

THIS TRUCK IS IN EXCELLENT CONDITION !

ONLY USED TO HAUL CARS AND TIRES FOR SMALL TIRE DEALER!

TRUCK IS SPOTLESS!

YOU WILL NOT FIND A NICER USED ROLLBACK ANYWHERE IN THIS PRICE RANGE!

WILL NOT LAST !

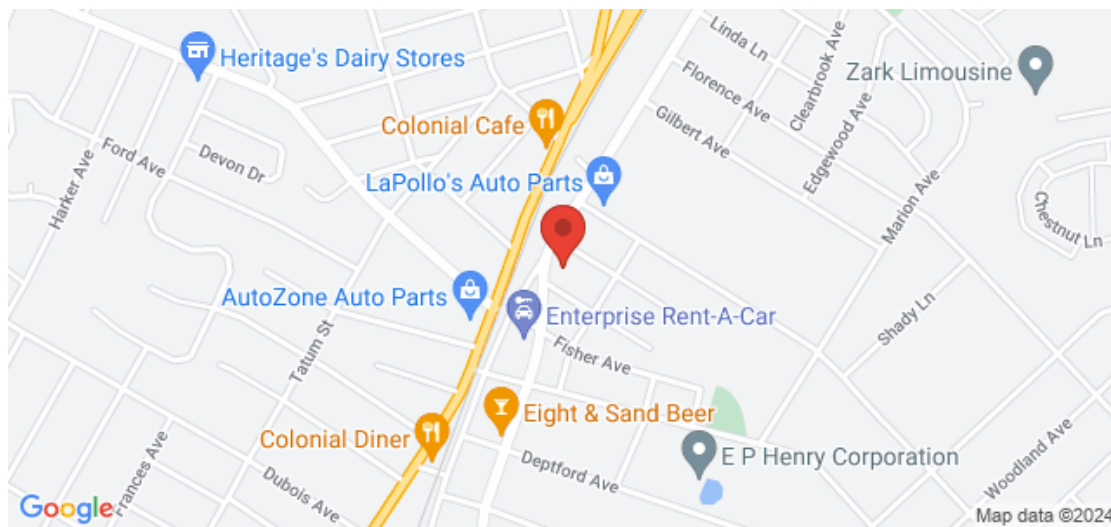
SAVE THOUSANDS OVER NEW !!!

\$43,900

2016 RAM 5500 SLT 4X4 ROLLBACK 6.7L CUMMINS DIESEL LOW MILES 1-OWNER

King of Cars and Trucks - 856-693-3181 - View this car on our website at njtruckking.com/6501029/ebrochure

Our Location :



2016 RAM 5500 SLT 4X4 ROLLBACK 6.7L CUMMINS DIESEL LOW MILES 1-OWNER

Installed Options

Interior

- 40/20/40 Split Bench Seat- Floor Covering Carpet -inc: Front Floor Mats
- Passenger Visor Vanity Mirror- 2 12V DC Power Outlets
- 4-Way Passenger Seat -inc: Manual Recline and Fore/Aft Movement - Analog Display
- Cruise Control w/Steering Wheel Controls- Day-Night Rearview Mirror
- Delayed Accessory Power- Electronically Controlled Throttle
- Fade-To-Off Interior Lighting- Front Center Armrest w/Storage- Front Cupholder
- Full Cloth Headliner
- Gauges -inc: Speedometer, Odometer, Voltmeter, Oil Pressure, Engine Coolant Temp, Tachometer, Oil Temperature, Transmission Fluid Temp, Engine Hour Meter and Trip Odometer
- Glove Box- Instrument Panel Bin, Dashboard Storage, Driver And Passenger Door Bins
- Manual Adjust Seats- Manual Adjustable Front Head Restraints- Manual Air Conditioning
- Manual Tilt Steering Column- Mini Floor Console- Redundant Digital Speedometer
- Sentry Key Engine Immobilizer- Systems Monitor- Urethane Gear Shift Knob

Exterior

- Tires: 225/70R19.5G All Position FT/RR Traction- Wheels: 19.5" x 6.0" Steel
- Black Door Handles- Black Fender Flares
- Black Side Windows Trim and Black Front Windshield Trim - Cab Clearance Lights
- Fixed Rear Window- Front Bumper w/2 Tow Hooks- Front License Plate Bracket
- Fully Automatic Aero-Composite Halogen Headlamps w/Delay-Off
- Fully Galvanized Steel Panels- Light Tinted Glass- Variable Intermittent Wipers

Safety

- 40/20/40 Split Bench Seat- Floor Covering Carpet -inc: Front Floor Mats
- Passenger Visor Vanity Mirror- 2 12V DC Power Outlets
- 4-Way Passenger Seat -inc: Manual Recline and Fore/Aft Movement - Analog Display
- Cruise Control w/Steering Wheel Controls- Day-Night Rearview Mirror
- Delayed Accessory Power- Electronically Controlled Throttle
- Fade-To-Off Interior Lighting- Front Center Armrest w/Storage- Front Cupholder
- Full Cloth Headliner
- Gauges -inc: Speedometer, Odometer, Voltmeter, Oil Pressure, Engine Coolant Temp, Tachometer, Oil Temperature, Transmission Fluid Temp, Engine Hour Meter and Trip Odometer
- Glove Box- Instrument Panel Bin, Dashboard Storage, Driver And Passenger Door Bins
- Manual Adjust Seats- Manual Adjustable Front Head Restraints- Manual Air Conditioning
- Manual Tilt Steering Column- Mini Floor Console- Redundant Digital Speedometer
- Sentry Key Engine Immobilizer- Systems Monitor- Urethane Gear Shift Knob

Mechanical

- Engine: 6.4L V8 Heavy Duty HEMI Due to overwhelming demand, we are no longer accepting DP orders with the 6.4L V8 gas engine (ESB).
- Transmission w/Driver Selectable Mode, Sequential Shift Control and Oil Cooler
- Transmission: 6-Speed Auto Aisin AS66RC- 10382# Maximum Payload
- 180 Amp Alternator- 4-Wheel Disc Brakes w/4-Wheel ABS, Front And Rear Vented Discs
- 4.44 Rear Axle Ratio- 50 State Emissions- 52 Gal. Fuel Tank
- 730CCA Maintenance-Free Battery w/Run Down Protection- Auto Locking Hubs
- Engine Oil Cooler- Front Anti-Roll Bar and Rear HD Anti-Roll Bar- GVWR: 18,000 lbs
- HD Shock Absorbers- Hydraulic Power-Assist Steering
- Leading Link Front Suspension w/Coil Springs- Leaf Rear Suspension w/Leaf Springs
- Manual Transfer Case- Mechanical Limited Slip Differential- Part-Time Four-Wheel Drive
- Single Stainless Steel Exhaust- Towing w/Harness and Trailer Sway Control
- Upfitter Switches

Option Packages

Factory Installed Packages

ENGINE: 6.7L I6 CUMMINS TURBO DIESEL

-inc: Cummins Turbo Diesel Badge, 87 mph Maximum Speed, Current Generation Engine Controller, Diesel Exhaust Brake, Selective Catalytic Reduction (Urea), RAM Active Air

\$7,400

Option Packages Total

\$7,400

King of Cars and Trucks
njtruckking.com
856-693-3181
1229 Broadway

Westville, New Jersey 08093

© 2024 AutoRevo - All rights reserved. - Powered by AutoRevo