

2008 GMC SIERRA 3500 SLT 6.6L DIESEL 35K ACTUAL MILES 1-OWNER 4X4 DRW

View this car on our website at njtruckking.com/6495063/ebrochure



Our Price **\$38,900**

Specifications:

Year:	2008
VIN:	1GTJK33698F145577
Make:	GMC SIERRA 3500 SLT
Model/Trim:	6.6L DIESEL 35K ACTUAL MILES 1-OWNER 4X4 DRW
Condition:	Pre-Owned
Body:	Pickup Truck
Exterior:	Gray
Engine:	ENGINE, DURAMAX 6.6L TURBO DIESEL V8
Interior:	Black Leather
Mileage:	35,092
Drivetrain:	4 Wheel Drive

~~THE HOLY GRAIL!

PRE-EMISSION DURAMAX DIESEL

2008 GMC SIERRA 3500HD SLT 4X4 DRW

DUALLY

~CREW CAB~

SLT PACKAGE

6.6L DURAMAX TURBO DIESEL

ALLISON AUTOMATIC TRANSMISSION

(35,092 ORIGINAL / ACTUAL MILES)

1-OWNER

TIME CAPSULE

GARAGE KEPT

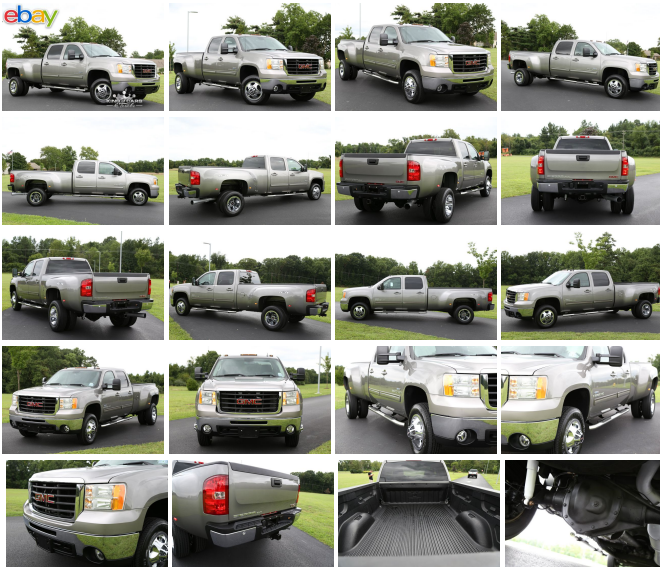
CLEAN CARFAX

NO PAINTWORK

NON SMOKER

METICULOUSLY MAINTAINED

BEST COLOR COMBO



MANY OPTIONS !

ORIGINAL OWNERS MANUALS

THIS TRUCK IS IN EXCELLENT CONDITION !

YOU WILL NOT FIND A NICER PRE-EMISSION DURAMAX ANYWHERE!

WILL NOT LAST !

BEST OF THE BEST

DON'T SNOOZE AND LOSE BECAUSE YOU WILL NOT FIND ANOTHER LIKE IT !

TRUCK IS AS CLOSE TO NEW AS YOU WILL FIND !

\$38900

2008 GMC SIERRA 3500 SLT 6.6L DIESEL 35K ACTUAL MILES 1-OWNER 4X4 DRW

King of Cars and Trucks - 609-504-8808 - View this car on our website at njtruckking.com/6495063/ebrochure

Our Location :



2008 GMC SIERRA 3500 SLT 6.6L DIESEL 35K ACTUAL MILES 1-OWNER 4X4 DRW

King of Cars and Trucks - 609-504-8808 - View this car on our website at njtruckking.com/6495063/ebrochure

Installed Options

Interior

- Console, floor with storage compartment, 2 auxiliary power outlets and dual cup holders
- Cruise control, electronic with set and resume speed, located on steering wheel
- Cup holders, front (Also includes rear cupholders on Extended and Crew Cab models)
- Defogger, rear-window electric (Not available with (A48) power sliding rear window.)

- Door locks, power
- Driver Information Center with odometer, trip odometer and message center (monitors numerous systems depending on vehicle equipment level including low fuel, turn signal "on", transmission temperature and oil change notification)
- Floor covering, color-keyed carpeting with rubberized vinyl floor mats (Extended and Crew Cab models also include rear floor mats)
- Headliner, Opal Gray-colored cloth with matching retainer moldings
- Instrumentation, analog with speedometer, fuel level, engine temperature, tachometer, voltmeter and oil pressure indicators
- Lighting, interior with dome and reading lights, illuminated entry feature and backlit instrument panel switches
- Mirror, inside rearview auto-dimming with 8-point compass and outside temperature display
- Power outlets, 2 auxiliary instrument panel-mounted with covers, 12-volt
- Remote vehicle starter prep package, includes Remote Keyless Entry (To enable remote start capability, new key fobs and vehicle reprogramming are required. Please see dealer for details. (Remote Keyless Entry does not lock/unlock tailgate when (PDF) EZ-Lift Tailgate Package is ordered)
- Seat adjuster, driver 10-way power- Seat adjuster, front passenger 10-way power
- Seat trim, Ultrasoft Leather-appointed
- Seat, rear 60/40 folding bench (folds up), 3-passenger, folding (includes child seat top tether anchor)
- Seats, front bucket includes 10-way power driver and front passenger seat adjusters, 2-way power lumbar control, heated seat cushions and seatbacks, 2-position driver memory, adjustable outboard head restraints, floor console and storage pockets
- Steering column, Tilt-Wheel, adjustable with brake/transmission shift interlock
- Steering wheel controls, mounted audio controls
- Steering wheel, leather-wrapped with theft-deterrent locking feature
- Visors, driver and front passenger, sliding, with clip and illuminated vanity mirror on driver and passenger-side, Opal Gray-colored
- Warning tones, headlamp on, key-in-ignition, driver and passenger buckle up reminder and turn signal on
- Windows, power with driver Express-Down (Includes front passenger Express-down)
- Coat hooks, rear driver and passenger side
- Audio system feature, Bose premium speaker system with sub-woofer in center console
- Audio system controls, rear with 2 headphone jacks (headphones not included), power outlet and controls for volume, station selection and media (Requires Crew Cab models)
- Assist handle, front passenger (Also includes rear assist handles in the headliner on Extended and Crew Cab models)
- Air conditioning, dual-zone automatic climate control with individual climate settings for driver and right-front passenger
- XM Satellite Radio. With a wide variety of programming, XM has something to excite any driver. Whether you want to be entertained or informed, to laugh, think, or sing, XM has the perfect channel for you - coast-to-coast, and in digital-quality sound. 3 trial months - no obligation (Available in the 48 contiguous United States. Required \$12.95 monthly subscription sold separately after 3 trial months. All fees and programming subject to change. Subscription subject to customer agreement. For more information, visit gm.xradio.com. Not available with (UE0) OnStar, delete.)

Exterior

- Wipers, front intermittent wet-arm with pulse washers
- Windshield washer fluid system, heated
- Wheels, 4 - 16" x 7.0" (40.6 cm x 17.8 cm) 8-lug steel (single rear wheel), Spare not included with (ZW9) pickup box delete unless a spare tire is ordered (Requires and only available with (C7W) 11,400 lbs. (5171 kg) GVWR (dual rear wheel).)
- Wheel trim, Chrome trim skins and chrome center caps (Requires (C7W) 11,400 lbs. (5171 kg) GVWR (dual rear wheel))
- Tires, LT225/75R17E all-season, blackwall (Requires (C7W) 11,400 lbs. (5171 kg) GVWR (dual rear wheel). Includes 7 tires with (E63) Wideside pickup box. Includes 6 tires with (ZW9) pickup box delete.)
- Tire carrier, outside spare, winch-type mounted under frame at rear (Orders with (ZW9) Pickup box delete will not include a Spare Tire Carrier unless a spare tire is ordered)
- Tailgate protection, top of tailgate protection cap - Moldings, bodyside, body-colored
- Mirrors, outside heated power-adjustable, Black, manual-folding Requires (C7W) 11,400 lbs. (5171 kg) GVWR (dual rear wheel)
- Lamps, dual cargo area lamps
- Lamps, Smoked Amber roof marker (Standard on (C7W) 11,400 lbs. (5171 kg) GVWR only. With (GED) 9700 lbs. GVWR (single rear wheel) or (C4M) 9900 lbs. GVWR (single rear wheel), not available with (YF5) California state emissions requirements.)
- Headlamps, dual halogen composite with automatic exterior lamp control and flash-to-pass feature
- Grille, chrome surround
- Glass, Solar-Ray deep-tinted (all windows except light-tinted glass on windshield and driver-and front passenger-side glass) (With Regular Cab models, includes rear window. With Extended Cab models, includes rear and rear quarter windows. With Crew Cab models or (C49) rear-window defogger, includes light-tinted rear window. Included with (PCM) Work Truck Preferred Package.)
- Fog lamps, front, halogen
- Bumper, rear chrome, step-style with pad (Not available with (ZW9) pickup box delete)
- Bumper, front chrome (Includes body-color bumper top caps) - Air dam, Black

Safety

- Console, floor with storage compartment, 2 auxiliary power outlets and dual cup holders
- Cruise control, electronic with set and resume speed, located on steering wheel
- Cup holders, front (Also includes rear cupholders on Extended and Crew Cab models)
- Defogger, rear-window electric (Not available with (A48) power sliding rear window.)
- Door locks, power
- Driver Information Center with odometer, trip odometer and message center (monitors numerous systems depending on vehicle equipment level including low fuel, turn signal "on", transmission temperature and oil change notification)
- Floor covering, color-keyed carpeting with rubberized vinyl floor mats (Extended and Crew Cab models also include rear floor mats)
- Headliner, Opal Gray-colored cloth with matching retainer moldings
- Instrumentation, analog with speedometer, fuel level, engine temperature, tachometer, voltmeter and oil pressure indicators
- Lighting, interior with dome and reading lights, illuminated entry feature and backlit instrument panel switches
- Mirror, inside rearview auto-dimming with 8-point compass and outside temperature display
- Power outlets, 2 auxiliary instrument panel-mounted with covers, 12-volt
- Remote vehicle starter prep package, includes Remote Keyless Entry (To enable remote start capability, new key fobs and vehicle reprogramming are required. Please see dealer for details. (Remote Keyless Entry does not lock/unlock tailgate when (PDF) EZ-Lift Tailgate Package is ordered)
- Seat adjuster, driver 10-way power- Seat adjuster, front passenger 10-way power
- Seat trim, Ultrasoft Leather-appointed
- Seat, rear 60/40 folding bench (folds up), 3-passenger, folding (includes child seat top tether anchor)
- Seats, front bucket includes 10-way power driver and front passenger seat adjusters, 2-way power lumbar control, heated seat cushions and seatbacks, 2-position driver memory, adjustable outboard head restraints, floor console and storage pockets
- Steering column, Tilt-Wheel, adjustable with brake/transmission shift interlock
- Steering wheel controls, mounted audio controls
- Steering wheel, leather-wrapped with theft-deterrent locking feature
- Visors, driver and front passenger, sliding, with clip and illuminated vanity mirror on driver and passenger-side, Opal Gray-colored
- Warning tones, headlamp on, key-in-ignition, driver and passenger buckle up reminder and turn signal on
- Windows, power with driver Express-Down (Includes front passenger Express-down)
- Coat hooks, rear driver and passenger side
- Audio system feature, Bose premium speaker system with sub-woofer in center console
- Audio system controls, rear with 2 headphone jacks (headphones not included), power outlet and controls for volume, station selection and media (Requires Crew Cab models)
- Assist handle, front passenger (Also includes rear assist handles in the headliner on Extended and Crew Cab models)
- Air conditioning, dual-zone automatic climate control with individual climate settings for driver and right-front passenger
- XM Satellite Radio. With a wide variety of programming, XM has something to excite any driver. Whether you want to be entertained or informed, to laugh, think, or sing, XM has the perfect channel for you - coast-to-coast, and in digital-quality sound. 3 trial months - no obligation (Available in the 48 contiguous United States. Required \$12.95 monthly subscription sold separately after 3 trial months. All fees and programming subject to change. Subscription subject to customer agreement. For more information, visit gm.xradio.com. Not available with (UE0) OnStar, delete.)

Mechanical

- Pickup box, Wideside- Rear axle, 3.73 ratio- Recovery hooks, front, frame-mounted
- Spare tire lock keyed cylinder lock that utilizes same key as ignition and door (Not available with (ZW9) pickup box delete or (VF7) rear bumper delete)
- Steering, power, recirculating ball
- Suspension Package, Handling/Trailing, heavy-duty includes 46 mm piston monotube shocks and 34mm front stabilizer bar
- Suspension, front independent, torsion bar- Suspension, rear 3-stage springs
- Transfer case, electronic shift with rotary dial controls (Requires 4WD models)
- Transmission, 6-speed automatic, heavy-duty, electronically controlled with overdrive and tow/haul mode (Requires (LY6) Vortec 6.0L V8 SFI engine)
- Air cleaner, high-capacity- Alternator, 125 amps
- Battery, heavy-duty 600 cold-cranking amps, maintenance-free with rundown protection and retained accessory power
- Cooling, auxiliary external transmission oil cooler, heavy-duty air-to-oil
- Cooling, external engine oil cooler, heavy-duty air-to-oil, integral to driver side of radiator tank
- Engine, Vortec 6.0L Variable Valve Timing V8 SFI (353 hp [262.8 kW] @ 5400 rpm, 373 lb-ft of torque [505.6 N-m] @ 4400 rpm) on (GED) 9700 lbs. (4400 kg) GVWR and (C4M) 9900 lbs. (4490 kg) GVWR)-(312 hp [232.3 kW] @ 4400 rpm, 373 lb-ft of torque [505.6 N-m] @ 4400 rpm on (C7W) 11,400 lbs. (5171 kg) GVWR)
- Exhaust, aluminized stainless-steel muffler and tailpipe- Four wheel drive
- Frame, hydroformed- GVWR, 11,400 lbs. (5171 kg) with dual rear wheels

Option Packages

Factory Installed Packages

-
ENGINE, DURAMAX 6.6L TURBO DIESEL
V8

B5-Diesel compatible (365 hp
[271.7 kW] @ 3200 rpm, 660
lb-ft of torque [894.6 N-m] @
1600 rpm) \$7,195

-
Option Packages Total
\$7,195

King of Cars and Trucks

njtruckking.com

609-504-8808

1022 N Evergreen Ave

Woodbury, New Jersey 08096

© 2019 AutoRevo - All rights reserved. - Powered by AutoRevo