

njtrucking.com
609-504-8808
1022 N Evergreen Ave
Woodbury, New Jersey
08096

King of Cars and
Trucks

2012 FORD F250 REG. CAB XL 8' BED 6.2L V8 67K MILES 4X4 LIFTED MINT

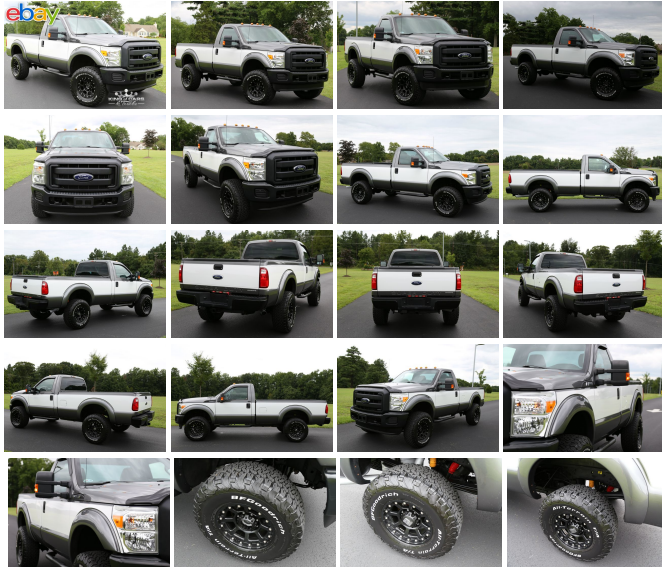
View this car on our website at njtrucking.com/6495046/ebrochure



Our Price **\$22,900**

Specifications:

Year: 2012
VIN: 1FTBF2B68CEB94627
Make: FORD F250 REG.
Model/Trim: CAB XL 8' BED 6.2L V8 67K MILES 4X4 LIFTED MINT
Condition: Pre-Owned
Body: Pickup Truck
Exterior: Gray
Engine: 6.2L SOHC 16-VALVE EFI NA V8 FLEX-FUEL ENGINE
Interior: Gray Cloth
Mileage: 67,294
Drivetrain: 4 Wheel Drive



~~
2012 FORD F250 REG. CAB LONG BED XL PACKAGE

4X4

6.2L V8

AUTOMATIC TRANSMISSION

(67,294 ORIGINAL MILES)

CLEAN CARFAX

POWER WINDOWS, LOCKS, MIRRORS !

2 TONE PAINT

4" LIFT KIT

XD WHEELS

BFG TIRES LIKE NEW

BEDLINER

RUNNING BOARDS

FENDER FLARES

UPFITTER SWITCHES

TRAILER BRAKE CONTROL

METICULOUSLY MAINTAINED

TRUCK IS SPOTLESS!

YOU WILL NOT FIND A NICER USED PICKUP ANYWHERE!

WILL NOT LAST !

\$22,900

2012 FORD F250 REG. CAB XL 8' BED 6.2L V8 67K MILES 4X4 LIFTED MINT

King of Cars and Trucks - 609-504-8808 - View this car on our website at njtruckking.com/6495046/ebrochure

Our Location :



2012 FORD F250 REG. CAB XL 8' BED 6.2L V8 67K MILES 4X4 LIFTED MINT

King of Cars and Trucks - 609-504-8808 - View this car on our website at njtruckking.com/6495046/ebrochure

Installed Options

Interior

- (2) aux pwr outlets in instrument panel - (4) air registers w/positive shut-off
- 3-blink lane change signal- 4-way adjustable driver/passenger headrests
- Accessory delay- Air conditioning w/chrome ringed black vents
- Cloth 40/20/40 split bench front seat -inc: center armrest, cupholder, storage, center underseat storage w/aux pwr outlet
- Color-keyed carpet full-floor covering- Color-keyed carpeted front floor mats
- Color-keyed cloth headliner
- Color-keyed door trim panel -inc: color-keyed soft armrest, pwr switch bezel, molded upper applique, upper & lower map pockets, grab handle & reflector
- Color-keyed scuff plates- Cruise control- Dash-top tray
- Door operated dome lamp w/time delay off & IP switch
- Driver & front passenger grab handles- Driver manual lumbar support
- Dual color-keyed coat hooks- Dual color-keyed vinyl sunvisors -inc: covered mirrors
- Front passenger-side roof ride handle- Glove box- Instrument panel mounted storage
- Map lamps
- Multifunction switch message center -inc: ice blue lighting, 3-button message control on steering wheel, outside temp display
- Oil minder system- Pwr door locks w/backlit switches
- Pwr windows w/driver one-touch-up/down & backlit switches
- Remote keyless entry & perimeter anti-theft alarm - SecuriLock anti-theft ignition
- Tilt/telescoping steering column

Exterior

- Manually telescoping pwr heated trailer tow mirrors -inc: turn signals, integrated clearance lights, heated convex spotter mirror
- Pickup box/cargo lights- Rear privacy glass
- Removable locking tailgate w/black handle & TailGate Assist - Solar tinted glass
- Underhood service light- Variable intermittent windshield wipers
- Grille w/medium platinum insert & chrome surround - Full-size spare tire w/lock & carrier

- Front/rear license plate brackets- Front fender vents- Dual beam jewel-effect headlamps
- Chrome rear bumper- Chrome front bumper w/grained top cover
- Box-rail & tailgate top-edge moldings- Black door handles
- 17" 5-spoke cast aluminum wheels -inc: bright center ornaments
- (5) LT245/75R17E all-season BSW tires

Safety

- (2) aux pwr outlets in instrument panel - (4) air registers w/positive shut-off
- 3-blink lane change signal- 4-way adjustable driver/passenger headrests
- Accessory delay- Air conditioning w/chrome ringed black vents
- Cloth 40/20/40 split bench front seat -inc: center armrest, cupholder, storage, center underseat storage w/aux pwr outlet
- Color-keyed carpet full-floor covering- Color-keyed carpeted front floor mats
- Color-keyed cloth headliner
- Color-keyed door trim panel -inc: color-keyed soft armrest, pwr switch bezel, molded upper applique, upper & lower map pockets, grab handle & reflector
- Color-keyed scuff plates- Cruise control- Dash-top tray
- Door operated dome lamp w/time delay off & IP switch
- Driver & front passenger grab handles- Driver manual lumbar support
- Dual color-keyed coat hooks- Dual color-keyed vinyl sunvisors -inc: covered mirrors
- Front passenger-side roof ride handle- Glove box- Instrument panel mounted storage
- Map lamps
- Multifunction switch message center -inc: ice blue lighting, 3-button message control on steering wheel, outside temp display
- Oil minder system- Pwr door locks w/backlit switches
- Pwr windows w/driver one-touch-up/down & backlit switches
- Remote keyless entry & perimeter anti-theft alarm- SecuriLock anti-theft ignition
- Tilt/telescoping steering column

Mechanical

- (2) front tow hooks- 12.5K trailer hitch receiver -inc: 2" hitch - 157-amp HD alternator
- 2-ton mechanical jack- 3.73 axle ratio (REQ: 996 Engine) - 4-wheel drive
- 6.2L SOHC 16-valve EFI NA V8 flex-fuel engine - 72 amp/hr (650 CCA) battery
- 8' pickup box -inc: (4) tie-down hooks, partitionable & stackable storage
- Front stabilizer bar- HD gas shock absorbers- Manual transfer case & hubs
- Mono-beam front axle w/coil spring suspension- Pwr steering w/steering damper
- Stationary elevated engine idle control (SEIC)
- TorqShift 6-speed automatic transmission w/tow/haul mode (REQ: 996 Engine)
- Trailer brake controller *Compatible w/select electric over hydraulic brakes* *w/66D Pickup Box Delete, 7 & 4 way combo trailer tow socket & bracket deleted*
- Trailer tow pkg -inc: 7-wire harness w/relays, 7/4 pin combination connector

Option Packages

Factory Installed Packages

- _____
6.2L SOHC 16-VALVE EFI NA V8 FLEX-FUEL ENGINE

King of Cars and Trucks

njtruckking.com

609-504-8808

1022 N Evergreen Ave

Woodbury, New Jersey 08096

© 2019 AutoRevo - All rights reserved. - Powered by AutoRevo