

njtrucking.com
609-504-8808
1022 N Evergreen Ave
Woodbury, New Jersey
08096

King of Cars and
Trucks

2004 CHEVROLET EXPRESS 3500 DRW UTILITY SERVICE 93K MILES 1-OWNER WOW

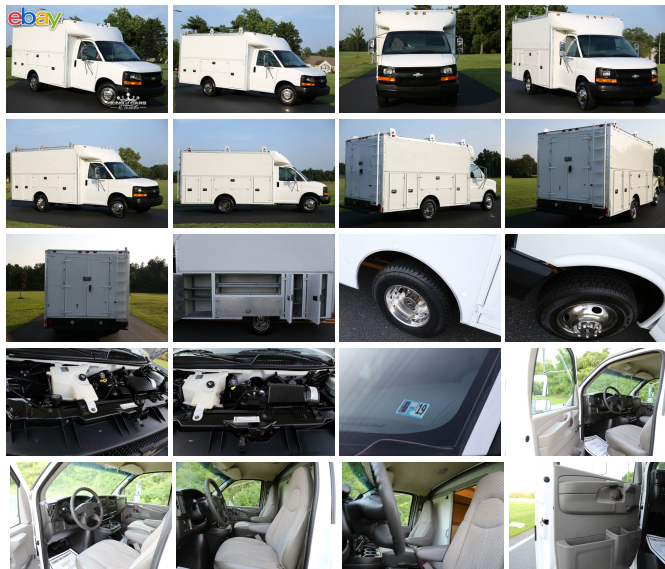
View this car on our website at njtrucking.com/6492691/ebrochure



Our Price **\$18,900**

Specifications:

Year: 2004
VIN: 1GBJG31U441239638
Make: CHEVROLET EXPRESS 3500
Model/Trim: DRW UTILITY SERVICE 93K MILES 1-OWNER WOW
Condition: Pre-Owned
Exterior: White
Engine: ENGINE, VORTEC 6000 V8 SFI (300 HP [223.8 KW] @ 4400 RPM, 360 LB.-FT. [486.6 N-M] @ 4000 RPM)
Interior: Gray
Mileage: 93,483
Drivetrain: Rear Wheel Drive



~~2004 CHEVROLET EXPRESS 3500 DRW

STEP UTILITY VAN

SPARTEN UTILITY / SERVICE VAN
 ALUMINUM BODY !! RARE FIND

6.0L V8

AUTOMATIC TRANSMISSION

(93,483 ORIGINAL / ACTUAL MILES)

CLEAN CARFAX

1-OWNER

1-DRIVER

GARAGE KEPT

ALWAYS SERVICED AND DETAILED

METICULOUSLY MAINTAINED

EXCELLENT CONDITION

TIRES EXCELLENT

ALL THE OPTIONS

RUNS AND DRIVES LIKE NEW!

EXTERIOR AND INTERIOR SPOTLESS

YOU WILL NOT FIND NICER USED TRUCK ANYWHERE !

THIS TRUCK IS IN MINT CONDITION !

WILL NOT LAST LONG

NONE NICER

\$18,900

Our Location :



2004 CHEVROLET EXPRESS 3500 DRW UTILITY SERVICE 93K MILES 1-OWNER WOW
King of Cars and Trucks - 609-504-8808 - View this car on our website at njtrucking.com/6492691/ebrochure

Installed Options

Interior

- Visors, padded, driver and passenger side with vinyl trim
- Warning tones, headlamp on, key-in-ignition- Tow/haul mode selector, IP mounted
- Theft-deterrent system, PASSlock
- Sound system, ETR AM/FM stereo, includes seek-and-scan and digital clock. Includes front door speakers (2)
- Seat, front vinyl reclining buckets, includes head restraints
- Power outlet, auxiliary, 2 covered, on engine console cover, 12-volt- Oil life monitor
- Lighting, interior, dome lamp, includes door handle-activated switches
- Instrumentation, analog, includes speedometer, odometer with trip odometer, fuel level, voltmeter, engine temperature and oil pressure
- Heater and defogger, includes front and side window defoggers
- Headliner, cloth, over driver and passenger- Floor covering, Black rubberized vinyl front
- Defogger, side window- Cupholders, 3, on engine console cover
- Assist handle, front passenger- Air conditioning, front manual

Exterior

- Wipers, intermittent, front wet-arm with pulse washers- Paint, solid
- Mirrors, outside rearview, not equipped- License plate bracket, front
- Grille, Black composite, with single rectangular halogen headlamps (Not available with (ZR7) Chrome Appearance Package.)
- Glass, Solar-Ray light tinted, all windows- Daytime running lamps
- Bumper, front, painted Black, includes step-pad (Not available with (ZR7) Appearance Package or (YF1) RV Package.)
- Body, standard

Safety

- Visors, padded, driver and passenger side with vinyl trim
- Warning tones, headlamp on, key-in-ignition- Tow/haul mode selector, IP mounted

- Theft-deterrent system, PASSlock
- Sound system, ETR AM/FM stereo, includes seek-and-scan and digital clock. Includes front door speakers (2)
- Seat, front vinyl reclining buckets, includes head restraints
- Power outlet, auxiliary, 2 covered, on engine console cover, 12-volt - Oil life monitor
- Lighting, interior, dome lamp, includes door handle-activated switches
- Instrumentation, analog, includes speedometer, odometer with trip odometer, fuel level, voltmeter, engine temperature and oil pressure
- Heater and defogger, includes front and side window defoggers
- Headliner, cloth, over driver and passenger- Floor covering, Black rubberized vinyl front
- Defogger, side window- Cupholders, 3, on engine console cover
- Assist handle, front passenger- Air conditioning, front manual

Mechanical

- Alternator, 145 amps
- Battery, 600 cold-cranking amps, includes rundown protection and retained accessory power
- Brake/transmission shift interlock, automatic transmission
- Brakes, 4-wheel antilock, 4-wheel disc
- Engine, Vortec 6000 V8 SFI (300 HP [223.8 kW] @ 4400 rpm, 360 lb.-ft. [486.6 N-m] @ 4000 rpm) (Includes external oil cooler.)
- Exhaust, aluminized stainless-steel muffler and tailpipe- Frame, ladder-type
- Fuel capacity, approximate, gallon (liters) 33 (125)
- GVWR, 10,000 lbs. (4536 kg) (Not available with (YF1) RV Package, Requires (R05) Dual rear wheels)
- Rear axle, 4.10 ratio (Please reference Engine/Axle page to verify availability.)
- Rear wheel drive- Steering, power
- Suspension, front, independent coil springs, and stabilizer bar
- Suspension, rear, hypoid drive axle with multi-leaf springs
- Tires, front LT225/75R16D, all-season, blackwall (Requires (R05) Wheels, dual rear, 6 - 16" x 6.5" (40.6 cm x 16.5 cm), steel painted Gray on CG33503 Models. -Standard on CG33803 and CG33903 Models only.)
- Tires, rear LT225/75R16D, all-season, blackwall (Requires (R05) Wheels, dual rear, 6 - 16" x 6.5" (40.6 cm x 16.5 cm), steel painted Gray on CG33503 Models. -Standard on CG33803 and CG33903 Models only.)
- Transmission, 4-speed automatic, heavy-duty, electronically controlled with overdrive, tow/haul mode and internal transmission oil cooler
- Wheels, dual rear, 6 - 16" x 6.5" (40.6 cm x 16.5 cm), steel painted Gray (Standard on CG33803 and CG33903 Models only. -Not available with (C6Y) GVWR, 9600 lbs. (4354 kg). Not available with (XHH) Tires, front LT245/75R16E, all-season, blackwall, (YHH) Tires, rear LT245/75R16E, all-season, blackwall or (ZHH) Tire, spare LT245/75R16E, all-season, blackwall)

Option Packages

Factory Installed Packages

-
 ENGINE, VORTEC 6000 V8 SFI (300 HP
 [223.8 kW] @ 4400 RPM, 360 LB.-FT.
 [486.6 N-M] @ 4000 RPM)
 (Includes external oil cooler.)

King of Cars and Trucks

njtruckking.com

609-504-8808

1022 N Evergreen Ave

Woodbury, New Jersey 08096

© 2019 AutoRevo - All rights reserved. - Powered by AutoRevo