



## 2005 CADILLAC XLR CONVERTIBLE 52K ACTUAL MILES RARE XENON BLUE MINT

**Our Price \$27,900**

View this vehicle on our website at [njtruckking.com](http://njtruckking.com)

King of Cars and Trucks

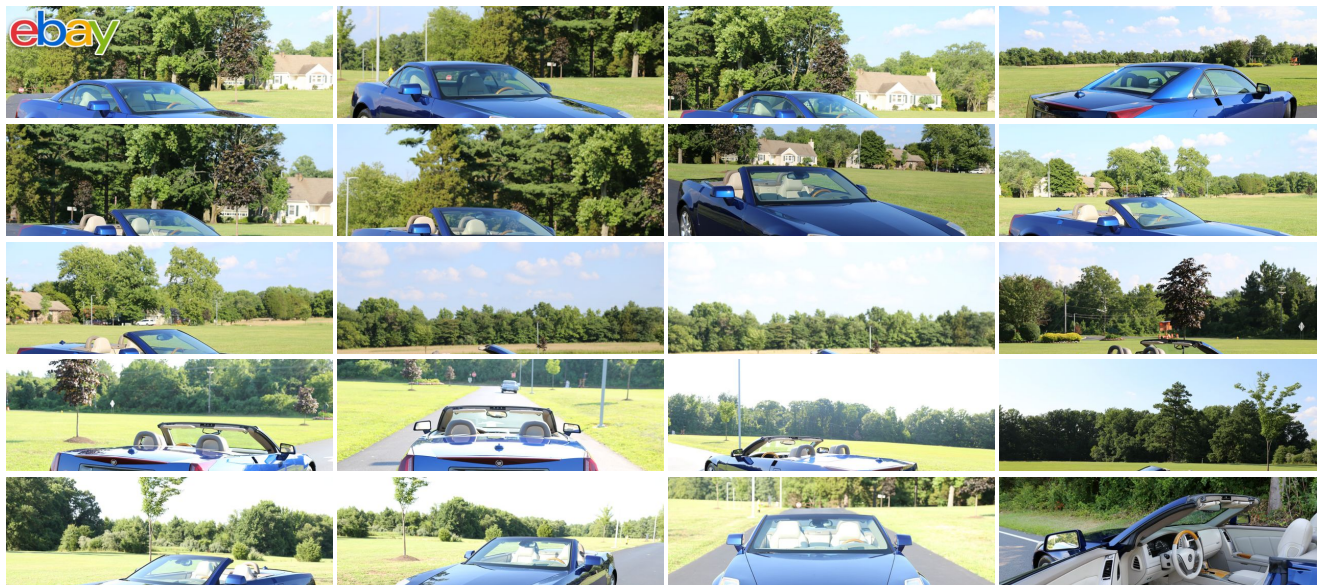
[856-693-3181](tel:856-693-3181)

1229 Broadway , Westville, New Jersey 08093

[Photos](#)

[Details](#)

[Contact](#)



Specifications:

|             |  |
|-------------|--|
| Year:       | 2005   |
| VIN:        | 1G6YV34A855603185  |
| Make:       | CADILLAC XLR CONVERTIBLE                                   |
| Model/Trim: | 52K ACTUAL MILES RARE XENON BLUE MINT                      |
| Condition:  | Pre-Owned  |
| Body:       | Convertible  |
| Exterior:   | Blue   |
| Engine:     | ENGINE, 4.6L DOHC V8, SFI VARIABLE VALVE TIMING, NORTHSTAR |
| Interior:   | Tan Leather  |
| Mileage:    | 52,550   |
| Drivetrain: | Rear Wheel Drive   |
| Economy:    | City 17 / Highway 25                                       |

Vehicle Description

~~ULTRA RARE XLR  
ONLY 52K ORIGINAL MILES  
  
2005 CADILLAC XLR  
\*\*\* HARDTOP CONVERTIBLE\*\*\*  
  
4.6L V8  
AUTOMATIC TRANSMISSION  
( 52,550 ORIGINAL / ACTUAL MILES )  
  
CLEAN CARFAX  
GARAGE KEPT  
NON SMOKER  
ALWAYS SERVICED AND DETAILED  
METICULOUSLY MAINTAINED  
SUPER RARE ( XENON BLUE )  
ALL THE OPTIONS  
NAVIGATION  
HEADS UP DISPLAY  
EXTERIOR AND INTERIOR SPOTLESS  
YOU WILL NOT FIND NICER XLR ANYWHERE !  
WILL NOT LAST LONG  
NONE NICER  
RARE FIND  
  
\$27,900

Installed Options

Interior

- Cruise control, adaptive, sophisticated radar transceiver automatically adjusts speed to

Option Packages

Factory Installed Packages

- maintain preset following distance, includes telltale in head-up display
- Door locks, power programmable, includes lockout protection
- Driver Information Center, 20 character display including tire pressure, 4 language capability (English, French, German, Spanish)
- Head-Up Display, includes digital readouts for vehicle speed, selected gear, adaptive cruise indicator, radio information, high-beam indicator, fuel level, 4 languages available (English, French, German, Spanish)
- Keyless Access, includes 2 BVLGARI remote transmitters which enable automatic door unlock and open by touching door switch
- Memory Personalization, memory presets for two drivers, includes power driver seat, outside mirrors with parallel park assist, steering column, climate control, sound system and driver information center
- Mirror, inside rearview, electrochromic (light-sensitive auto dimming), includes OnStar controls
- OnStar, 1-year Directions & Connections Service, includes Driving Directions, Information/Convenience Services, RideAssist, Automatic Notification of Air Bag Deployment, Stolen-Vehicle Tracking, Emergency Services, Roadside Assistance, Remote Door Unlock, Remote Horn and Lights, GM Goodwrench Remote Diagnostics, AccidentAssist and Online Concierge. Drivers can also obtain the available voice-activated, hands-free Personal Calling service and Virtual Advisor that provides location-based traffic and weather reports and other personalized information. (Visit [www.onstar.com](http://www.onstar.com) for system information and details.)
- Seats, front bucket, leather seating surfaces, adjustable upper and lower lumbar support, 8-way power adjuster driver and passenger, easy exit seat position, cooled and heated seat cushions and seat backs and integrated audio system
- Sound system, ETR AM/FM stereo with 6-disc in dash CD changer, Bose premium 9-speaker system, DVD navigation, 6.5" LCD color display touch screen, voice recognition, Radio Data System, weather band, digital clock and TheftLock
- Steering wheel accessory controls, cruise control, voice recognition and audio system
- Tire pressure monitor system, air pressure sensors in each tire. Pressure display in Driver Information Center
- Accents, interior, aluminum on center console, left-hand and right-hand door armrest, left-hand and right-hand door switch bezel, center air outlet, climate control, radio and steering wheel
- Air filtration system, includes pollen filter - Antenna, integral
- Cargo convenience net, trunk
- Climate control, dual-zone, automatic, includes individual climate settings for driver and right front passenger
- Console, floor, includes ashtray with cigar lighter, auxiliary power outlet, 2 cupholders, coin holder and accessible storage compartments in console and between seat backs
- Decklid, power, push button, open and close
- Defogger, rear-window, electric, front and side window outlets, driver and right front passenger
- Floormats, carpeted- Fuel filler door release, power
- Glovebox, lockable, passenger side, illuminated
- Instrumentation, electronic, analog, BVLGARI-designed
- Lighting, illuminated entry and exit, includes courtesy lamps and entrance lamps in base of door
- Map pockets, door storage- Parking brake release, automatic
- Rear Parking Assist, Ultrasonic, includes rearview LED light bar and audible warning
- Steering column, power tilt and telescopic
- Steering wheel, leather-wrapped rim with wood trim- Theft-deterrent system, audible
- Universal transmitter, HomeLink, includes garage door opener, 3-channel programmable
- Visors, illuminated vanity mirrors, driver and front passenger
- Windows, integrated automatic indexing seal system
- Windows, power, includes express up/down driver and passenger

## Exterior

- Daytime running lamps
- Mirrors, outside rearview, power heated, memory, manual folding, driver side electrochromic (light sensitive, automatic dimming)
- Fog lamps, front, integral- Glass, Solar-Ray light tinted- Hardtop, retractable, power
- Headlamps, bi-functional high-intensity discharge with headlamp washers and Twilight Sentinel automatic lamp control
- Tail lamps, LED illumination- Wipers, intermittent, front, with Rainsense feature

## Safety

- Cruise control, adaptive, sophisticated radar transceiver automatically adjusts speed to maintain preset following distance, includes telltale in head-up display
- Door locks, power programmable, includes lockout protection
- Driver Information Center, 20 character display including tire pressure, 4 language capability (English, French, German, Spanish)
- Head-Up Display, includes digital readouts for vehicle speed, selected gear, adaptive cruise indicator, radio information, high-beam indicator, fuel level, 4 languages available (English, French, German, Spanish)
- Keyless Access, includes 2 BVLGARI remote transmitters which enable automatic door unlock and open by touching door switch
- Memory Personalization, memory presets for two drivers, includes power driver seat,

## ENGINE, 4.6L DOHC V8, SFI VARIABLE VALVE TIMING, NORTHSTAR

(320 HP [ 238.7 kW] @ 6400 rpm, 310 lb.-ft  
[418.5 N-m] @ 4400 rpm)

- outside mirrors with parallel park assist, steering column, climate control, sound system and driver information center
- Mirror, inside rearview, electrochromic (light-sensitive auto dimming), includes OnStar controls
- OnStar, 1-year Directions & Connections Service, includes Driving Directions, Information/Convenience Services, RideAssist, Automatic Notification of Air Bag Deployment, Stolen-Vehicle Tracking, Emergency Services, Roadside Assistance, Remote Door Unlock, Remote Horn and Lights, GM Goodwrench Remote Diagnostics, AccidentAssist and Online Concierge. Drivers can also obtain the available voice-activated, hands-free Personal Calling service and Virtual Advisor that provides location-based traffic and weather reports and other personalized information. (Visit [www.onstar.com](http://www.onstar.com) for system information and details.)
- Seats, front bucket, leather seating surfaces, adjustable upper and lower lumbar support, 8-way power adjuster driver and passenger, easy exit seat position, cooled and heated seat cushions and seat backs and integrated audio system
- Sound system, ETR AM/FM stereo with 6-disc in dash CD changer, Bose premium 9-speaker system, DVD navigation, 6.5" LCD color display touch screen, voice recognition, Radio Data System, weather band, digital clock and TheftLock
- Steering wheel accessory controls, cruise control, voice recognition and audio system
- Tire pressure monitor system, air pressure sensors in each tire. Pressure display in Driver Information Center
- Accents, interior, aluminum on center console, left-hand and right-hand door armrest, left-hand and right-hand door switch bezel, center air outlet, climate control, radio and steering wheel
- Air filtration system, includes pollen filter - Antenna, integral
- Cargo convenience net, trunk
- Climate control, dual-zone, automatic, includes individual climate settings for driver and right front passenger
- Console, floor, includes ashtray with cigar lighter, auxiliary power outlet, 2 cupholders, coin holder and accessible storage compartments in console and between seat backs
- Decklid, power, push button, open and close
- Defogger, rear-window, electric, front and side window outlets, driver and right front passenger
- Floor mats, carpeted- Fuel filler door release, power
- Glovebox, lockable, passenger side, illuminated
- Instrumentation, electronic, analog, BVLGARI-designed
- Lighting, illuminated entry and exit, includes courtesy lamps and entrance lamps in base of door
- Map pockets, door storage- Parking brake release, automatic
- Rear Parking Assist, Ultrasonic, includes rearview LED light bar and audible warning
- Steering column, power tilt and telescopic
- Steering wheel, leather-wrapped rim with wood trim- Theft-deterrent system, audible
- Universal transmitter, HomeLink, includes garage door opener, 3-channel programmable
- Visors, illuminated vanity mirrors, driver and front passenger
- Windows, integrated automatic indexing seal system
- Windows, power, includes express up/down driver and passenger

## Mechanical

- Brakes, 4-wheel antilock, 4-wheel disc- Ignition, keyless, engaged with push button start
- StabiliTrak, four-channel electronic vehicle stability enhancement system
- Traction control, all-speed, electronic
- Transmission, 5-speed automatic, electronically controlled with overdrive and Driver Shift Control
- Alternator, 150 amps- Battery, maintenance free, includes rundown protection
- Engine, 4.6L DOHC V8, SFI variable valve timing, Northstar (320 HP [ 238.7 kW] @ 6400 rpm, 310 lb.-ft [418.5 N-m] @ 4400 rpm)
- Exhaust outlets, dual chrome-plated tips
- Fuel capacity, approximate, 18 gallon (69 liters) - Rear axle, 2.93 ratio- Rear wheel drive
- Steering, power, Magnasteer, speed-sensitive, rack and pinion
- Suspension, 4-wheel independent, with Magnetic Ride Control
- Tires, P235/50R18, extended mobility, W-rated blackwall
- Wheels, 18" (45.7 cm) aluminum, polished

King of Cars and Trucks

King of Cars and Trucks

View this car on our website at [njtruckking.com/6480795](http://njtruckking.com/6480795)

Website: [njtruckking.com](http://njtruckking.com)

Phone: 856-693-3181

Map: [1229 Broadway, Westville, New Jersey 08093](#)

