

2013 Ford F-150 XLT

View this car on our website at carbuffs.com/6464121/ebrochure

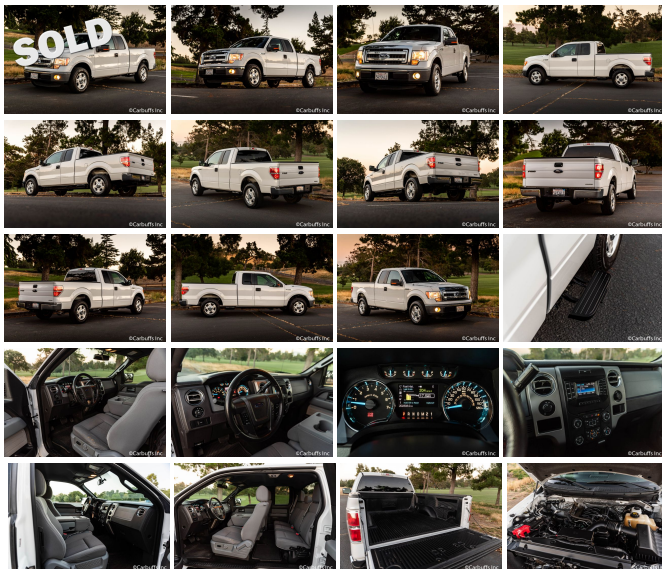


Our Price **\$0**

Specifications:

Year:	2013
VIN:	1FTFX1CF1DFA68239
Make:	Ford
Model/Trim:	F-150 XLT
Condition:	Pre-Owned
Body:	Pickup Truck
Exterior:	Oxford White
Engine:	5.0L V8 FFV ENGINE
Interior:	Steel Gray Cloth
Transmission:	6-SPEED ELECTRONIC AUTOMATIC TRANSMISSION W/OD & TOW/HAUL MODE
Mileage:	202,300
Drivetrain:	Rear Wheel Drive
Economy:	City 15 / Highway 21

1 owner California truck! Oxford white exterior with gray cloth interior. Powerful 5.0L V8 engine with automatic transmission. XLT package - inc: power heated exterior mirrors w/integrated turn signals & driver side auto-dimming function, auto-dimming rearview mirror, power adjustable pedals, SYNC voice activated communications & entertainment system w/Bluetooth capability, steering wheel audio controls, USB port, audio input jack, 911 assist, vehicle health report, Applink, MyFord w/5-way steering wheel control switch, 4.2" LCD audio/climate control screen in center stack, 4.2" LCD productivity screen message center w/trip computer, leather-wrapped steering wheel and 6-way power driver seat. Bedliner. Box side steps. 3:55 electronic lock rear axle. 7100# gvwv package. 202k freeway miles. Clean title and Carfax report. Runs, drives and looks excellent.



Our Location :



2013 Ford F-150 XLT

Carbuffs - (925) 671-2010 - View this car on our website at carbuffs.com/6464121/ebrochure

Installed Options

Interior

- Rear pwr point- Remote keyless entry key- 60/40 flip-up rear split bench seat
- Black urethane steering wheel- Chrome ring w/obsidian vanes air conditioning registers
- Cloth 40/20/40 split bench front seat w/manual driver lumbar
- Color-coordinated carpet -inc: carpeted front/rear floor mats- Compass- Cruise control
- Customer info display- Delayed accessory pwr
- Deployable cupholder under center portion of seat
- Display center -inc: warning messages & text functions - Dome light
- Driver & front passenger door scuff plates
- Driver & passenger covered visor vanity mirrors
- Driver side SecuriCode keyless entry keypad- Fade-to-off interior lighting
- Front passenger side A-pillar grab handle- Front pwr point
- Gauges -inc: fuel gauge, voltmeter, oil pressure, engine coolant temp, speedometer, tachometer, odometer
- Illuminated entry- Manual air conditioning- Outside temp gauge- Overhead console
- Perimeter alarm- Pwr 1st & 2nd row windows- Pwr door locks w/autolock feature
- SecuriLock passive anti-theft system (PATS)- Tilt steering column

Exterior

- 17" machined aluminum wheels w/painted accents
- Autolamp -inc: automatic on/off headlamps - Black door & tailgate handles
- Black front/rear stone cuffs- Black pwr side mirrors- Body-color front bumper fascia
- Cargo lamp integrated w/high mount stop light- Chrome front/rear step bumper
- Chrome grille surround w/chrome "two-bar style" insert - Fixed rear window- Fog lamps
- Full size spare tire- P235/75R17 all-terrain BSW tires- Rear privacy tint glass
- Removable tailgate w/key lock & lift assist
- Under frame winch-type spare tire carrier w/safety catch & lock - Variable interval wipers

Safety

- Rear pwr point- Remote keyless entry key- 60/40 flip-up rear split bench seat
- Black urethane steering wheel- Chrome ring w/obsidian vanes air conditioning registers
- Cloth 40/20/40 split bench front seat w/manual driver lumbar
- Color-coordinated carpet -inc: carpeted front/rear floor mats- Compass- Cruise control
- Customer info display- Delayed accessory pwr
- Deployable cupholder under center portion of seat
- Display center -inc: warning messages & text functions - Dome light
- Driver & front passenger door scuff plates
- Driver & passenger covered visor vanity mirrors
- Driver side SecuriCode keyless entry keypad- Fade-to-off interior lighting
- Front passenger side A-pillar grab handle- Front pwr point
- Gauges -inc: fuel gauge, voltmeter, oil pressure, engine coolant temp, speedometer, tachometer, odometer
- Illuminated entry- Manual air conditioning- Outside temp gauge- Overhead console
- Perimeter alarm- Pwr 1st & 2nd row windows- Pwr door locks w/autolock feature
- SecuriLock passive anti-theft system (PATS)- Tilt steering column

Mechanical

- 3.73 axle ratio (REQ: 99M Engine)- 3.7L V6 FFV engine
- 6700# GVWR, 1600# maximum payload- (4) pickup box tie-down hooks- 2-ton jack
- 6-speed electronic automatic transmission w/OD & tow/haul mode- 6.5' pickup box
- 78-amp/hr (750CCA) maintenance-free battery- Easy Fuel capless fuel filler system
- Gas shock absorbers - Leaf spring rear suspension w/2-stage variable rear springs
- Long-spindle double wishbone front suspension w/coil-over-shock IFS
- Pwr front/rear disc brakes- Pwr rack & pinion steering- Rear wheel drive
- Trailer sway control

Option Packages

Factory Installed Packages

5.0L V8 FFV ENGINE

\$1,000

6-SPEED ELECTRONIC AUTOMATIC TRANSMISSION W/OD & TOW/HAUL MODE

ALL WEATHER RUBBER FLOOR MATS

\$95

FRONT LICENSE PLATE BRACKET

PICKUP BED ACCESS STEPS

\$325

SIRIUSXM SATELLITE RADIO

\$195

TRAILER TOW PKG

-inc: class IV trailer hitch receiver, 7-pin wiring harness, upgraded radiator, aux trans oil cooler, SelectShift auto trans

\$375

XLT CONVENIENCE PKG

-inc: pwr heated exterior mirrors w/integrated turn signals & driver side auto-dimming function, auto-dimming rearview mirror, pwr adjustable pedals, SYNC voice activated communications & entertainment system w/Bluetooth capability, steering wheel audio controls, USB port, audio input jack, 911 assist, vehicle health report, Applink, MyFord w/5-way steering wheel control switch, 4.2" LCD audio/climate control screen in center stack, 4.2" LCD productivity screen message center w/trip computer, leather-wrapped steering wheel, 6-way pwr driver seat

\$740

3.55 ELECTRONIC-LOCKING REAR AXLE RATIO

\$470

CALIFORNIA EMISSIONS SYSTEM

OXFORD WHITE

STEEL GRAY, CLOTH 40/20/40 SPLIT BENCH FRONT SEAT

P235/75R17 ALL-TERRAIN BSW TIRES

Option Packages Total

\$3,200

Carbuffs

carbuffs.com

(925) 671-2010

2281-A Via De Mercados

Concord, CA 94520

© 2024 AutoRevo - All rights reserved. - Powered by AutoRevo