

2009 GMC 3500HD EXTENDED CAB MASON DUMP 6.0L V8 48K ACTUAL MILES

View this car on our website at njtruckking.com/6463023/ebrochure



Our Price **\$23,900**

Specifications:

Year:	2009
VIN:	1GDJC79K39E113204
Make:	GMC 3500HD EXTENDED
Model/Trim:	CAB MASON DUMP 6.0L V8 48K ACTUAL MILES
Condition:	Pre-Owned
Body:	Pickup Truck
Exterior:	Red
Engine:	ENGINE, VORTEC 6.0L VARIABLE VALVE TIMING V8 SFI
Interior:	Gray
Mileage:	48,204
Drivetrain:	Rear Wheel Drive

~~

2009 GMC SIERRA 3500HD

~EXTENDED CAB~

6.0L V8

AUTOMATIC TRANSMISSION

(48,204 ORIGINAL / ACTUAL MILES)

1-OWNER

1-DRIVER

CLEAN CARFAX

METICULOUSLY MAINTAINED

READING MASON DUMP

TOOLBOX

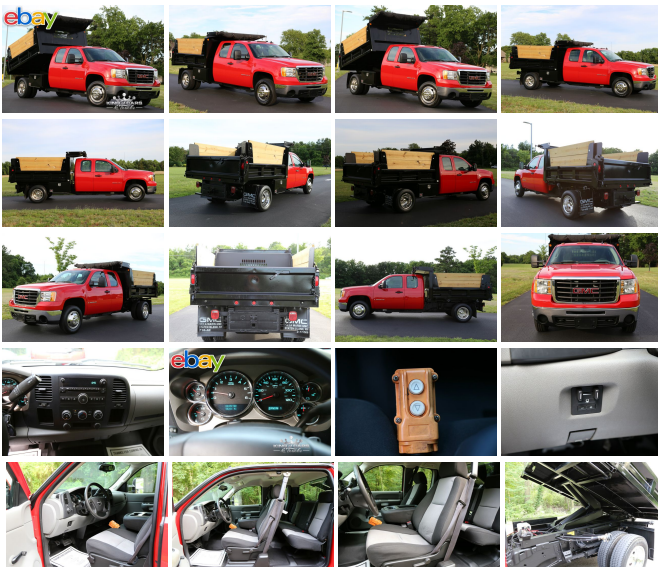
** W/TARP **

EXCELLENT TIRES

BEST COLOR COMBO

ORIGINAL OWNERS MANUALS

THIS TRUCK IS IN GREAT CONDITION !



YOU WILL NOT FIND A NICER USED DUMP ANYWHERE IN THIS PRICE RANGE!

WHY SPEND 80K PLUS ON A NEW TRUCK WHEN YOU CAN OWN THIS 1/4 ?!?!

WILL NOT LAST !

BEST OF THE BEST

DON'T SNOOZE AND LOSE BECAUSE YOU WILL NOT FIND ANOTHER LIKE IT !

\$23,900

2009 GMC 3500HD EXTENDED CAB MASON DUMP 6.0L V8 48K ACTUAL MILES

King of Cars and Trucks - 856-693-3181 - View this car on our website at njtruckking.com/6463023/ebrochure

Our Location :



2009 GMC 3500HD EXTENDED CAB MASON DUMP 6.0L V8 48K ACTUAL MILES

King of Cars and Trucks - 856-693-3181 - View this car on our website at njtruckking.com/6463023/ebrochure

Installed Options

Interior

- Power outlets, 2 auxiliary instrument panel-mounted with covers, 12-volt
- Seats, front 40/20/40 split-bench, 3-passenger, driver and front passenger manual reclining with outboard head restraints and center fold-down armrest with storage
- Air conditioning, single-zone manual front climate control (Standard on Extended Cab models only.)
- Assist handle, front passenger (Also includes rear assist handles in the headliner on Extended Cab Models.)
- Coat hooks, rear driver and passenger side
- Cup holders, front (Also includes rear cupholders on Extended Cab models.)

Option Packages

Factory Installed Packages

ENGINE, VORTEC 6.0L VARIABLE VALVE TIMING V8 SFI
(312 hp [232.6 kW] @ 4400 rpm, 373 lb.-ft. [503.5 N-m] @ 4400 rpm)

- Driver Information Center with odometer, trip odometer and message center (monitors numerous systems depending on vehicle equipment level including low fuel, turn signal "on", transmission temperature and oil change notification) (Driver Information Center controls are operated through the trip button unless (UK3) steering wheel mounted audio controls is ordered. On 3SA, includes 8-point compass and outside temperature.)
- Floor covering, Black rubberized vinyl
- Instrumentation, analog with speedometer, fuel level, engine temperature, tachometer, voltmeter and oil pressure indicators
- Lighting, interior with dome and reading lights, backlit instrument panel switches and door handle-activated illuminated entry
- Mirror, inside rearview manual day/night
- Seat, rear bench (folds up), full width, folding, 3-passenger (includes child seat top tether anchor) (Standard on Extended Cab models only.)
- Steering column, Tilt-Wheel, adjustable with brake/transmission shift interlock
- Steering wheel includes theft-deterrent locking feature
- Visors, driver and front passenger, sliding with clip and passenger side vanity mirror with cover, Opal Gray-colored
- Warning tones headlamp on, key-in-ignition, driver and passenger buckle up reminder and turn signal on
- Windows, fixed, rear access door (Standard on Extended Cab models only.)

Exterior

- Tires, LT225/75R17E all-season, blackwall (Includes 6 tires with (ZW9) pickup box delete.)
- Wheels, 6 - 17" x 6.5" (43.2 cm x 16.5 cm) 8-lug painted steel includes painted center caps
- Air dam, Black- Bumper, front chrome- Door handles, Black
- Glass, Solar-Ray light-tinted, all windows- Grille, chrome surround
- Headlamps, dual halogen composite with automatic exterior lamp control and flash-to-pass feature
- Lamps, Smoked Amber roof marker- Mirrors, outside manual, Black, manual folding
- Wipers, front intermittent wet-arm with pulse washers

Safety

- Power outlets, 2 auxiliary instrument panel-mounted with covers, 12-volt
- Seats, front 40/20/40 split-bench, 3-passenger, driver and front passenger manual reclining with outboard head restraints and center fold-down armrest with storage
- Air conditioning, single-zone manual front climate control (Standard on Extended Cab models only.)
- Assist handle, front passenger (Also includes rear assist handles in the headliner on Extended Cab Models.)
- Coat hooks, rear driver and passenger side
- Cup holders, front (Also includes rear cupholders on Extended Cab models.)
- Driver Information Center with odometer, trip odometer and message center (monitors numerous systems depending on vehicle equipment level including low fuel, turn signal "on", transmission temperature and oil change notification) (Driver Information Center controls are operated through the trip button unless (UK3) steering wheel mounted audio controls is ordered. On 3SA, includes 8-point compass and outside temperature.)
- Floor covering, Black rubberized vinyl
- Instrumentation, analog with speedometer, fuel level, engine temperature, tachometer, voltmeter and oil pressure indicators
- Lighting, interior with dome and reading lights, backlit instrument panel switches and door handle-activated illuminated entry
- Mirror, inside rearview manual day/night
- Seat, rear bench (folds up), full width, folding, 3-passenger (includes child seat top tether anchor) (Standard on Extended Cab models only.)
- Steering column, Tilt-Wheel, adjustable with brake/transmission shift interlock
- Steering wheel includes theft-deterrent locking feature
- Visors, driver and front passenger, sliding with clip and passenger side vanity mirror with cover, Opal Gray-colored
- Warning tones headlamp on, key-in-ignition, driver and passenger buckle up reminder and turn signal on
- Windows, fixed, rear access door (Standard on Extended Cab models only.)

Mechanical

- Transmission, 6-speed automatic, heavy-duty, electronically controlled with overdrive and tow/haul mode (Requires (LY6) Vortec 6.0L V8 SFI engine.)
- Air cleaner, high-capacity- Alternator, 125 amps
- Battery, heavy-duty 600 cold-cranking amps, maintenance-free with rundown protection and retained accessory power (Not standard with (LMM) Duramax 6.6L Turbo Diesel V8 engine.)
- Body, Chassis Cab, includes (VF7) bumper delete- Brakes, 4-wheel antilock, 4-wheel disc
- Cooling auxiliary external transmission oil cooler, heavy-duty air-to-oil
- Cooling external engine oil cooler, heavy-duty air-to-oil, integral to driver-side of radiator tank
- Engine, Vortec 6.0L Variable Valve Timing V8 SFI (312 hp [232.6 kW] @ 4400 rpm, 373 lb-ft. [503.5 N-m] @ 4400 rpm)
- Exhaust, aluminized stainless-steel muffler and tailpipe- Frame, hydroformed

- GVWR, 11,400 lbs. (5171 kg) (Standard with 2WD models only.) - Rear axle, 3.73 ratio
- Rear axle, 66" (167.6 cm) wide- Rear wheel drive- Recovery hooks, front, frame-mounted
- Steering, power, recirculating ball
- Suspension Package, Handling/Trailing, heavy-duty includes 46 mm piston monotube shocks and 34mm front stabilizer bar
- Suspension, front independent, torsion bar- Suspension, rear 3-stage springs

King of Cars and Trucks

njtruckking.com

856-693-3181

1229 Broadway

Westville, New Jersey 08093

© 2024 AutoRevo - All rights reserved. - Powered by [AutoRevo](#)