



1999 FORD F550 XLT JERR -DAN ROLLBACK 7.3L DIESEL 41K ACTUAL MILES WOW

Our Price \$39,500

View this vehicle on our website at njtruckking.com

King of Cars and Trucks

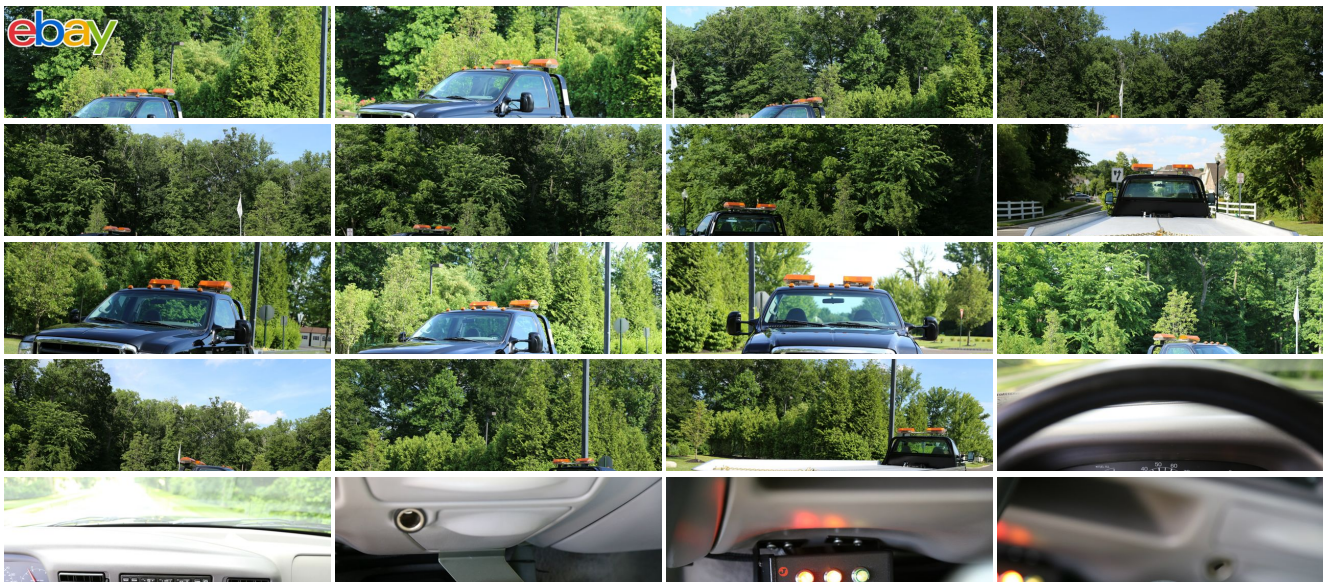
[856-693-3181](tel:856-693-3181)

1229 Broadway , Westville, New Jersey 08093

[Photos](#)

[Details](#)

[Contact](#)



Specifications:

Year:	1999
VIN:	1FDAF56F0XEB79645
Make:	FORD F550 XLT JERR
Model/Trim:	-DAN ROLLBACK 7.3L DIESEL 41K ACTUAL MILES WOW
Condition:	Pre-Owned
Body:	Pickup Truck
Exterior:	Black
Engine:	7.3L (444) DI V8 TURBO-DIESEL ENGINE
Interior:	Gray
Mileage:	41,173
Drivetrain:	Rear Wheel Drive

Vehicle Description

~~THIS IS THE BY FAR THE RAREST & MOST POPULAR ROLLBACK ON THE INTERNET !

ONE OF A KIND

!! THE HOLY GRAIL !!

1999 FORD F550 2-CAR ROLLBACK

~XLT~

7.3L POWERSTROKE TURBO DIESEL

6-SPEED MANUAL TRANSMISSION

(41,173 ORIGINAL / ACTUAL MILES)

1-OWNER

1-DRIVER

GARAGE KEPT TRUCK SINCE NEW !

RUST FREE TRUCK !

METICULOUSLY MAINTAINED

19' JERR-DAN ALUMINUM BED

W/WHEELLIFT

ALL CHAINS AND STRAPS INCLUDED

BEST COLOR COMBO

2 SETS OF KEYS

ALL THE OPTIONS !

CD PLAYER

EXCELLENT TIRES !!

THIS TRUCK IS IN PRISTINE CONDITION !

OWNED BY A SMALL CAR DEALERSHIP/MECHANIC SHOP SINCE DAY ONE STORED IN THE GARAGE

YOU WILL NOT FIND A NICER USED ROLLBACK ANYWHERE!

WHY SPEND 75K PLUS ON A NEW TRUCK WHEN YOU CAN OWN THIS ONE FOR HALF AND IT WILL LAST LONGER THEN ANY OF THE NEW TRUCKS OUT TODAY ! PRE-EMISSION DIESEL ! NO DEF FLUID ! NO CDL REQUIRED !

WILL NOT LAST !

BEST OF THE BEST

DON'T SNOOZE AND LOSE BECAUSE YOU WILL NOT FIND ANOTHER LIKE IT !

THIS IS AN EXTREMELY RARE OPPORTUNITY !

\$39,500

Installed Options

Interior

- Electronic AM/FM stereo-inc: digital clock, dual door-mounted speakers
- HD vinyl bench seat w/outboard seating position integral headrests
- (4) air registers w/positive shut-off- 11.5" day/night rearview mirror- Auxiliary pwr point
- Black vinyl full floor covering- Black vinyl steering wheel- Cigar lighter
- Color-keyed door trim panel-inc: hard armrest, grab handle, reflector
- Color-keyed instrument panel w/dual cupholders- Color-keyed molded cloth headliner
- Color-keyed scuff plates- Dual front color-keyed coat hooks
- Front door operated dome lamp w/time delay off- Front passenger assist handle
- Gray fabric back panel cover- Inside hood release
- Instrumentation-inc: tachometer, voltmeter, trip odometer, oil pressure/ coolant temp/fuel gauges, indicator lights
- Vinyl sun visors

Exterior

- Argent grille- Argent painted front bumper- Black door handles
- Black manual fold-away trailer tow mirrors- Fixed interval wipers- Roof clearance lights
- Sealed beam halogen headlights- Solar tinted glass

Safety

- Electronic AM/FM stereo-inc: digital clock, dual door-mounted speakers
- HD vinyl bench seat w/outboard seating position integral headrests
- (4) air registers w/positive shut-off- 11.5" day/night rearview mirror- Auxiliary pwr point
- Black vinyl full floor covering- Black vinyl steering wheel- Cigar lighter
- Color-keyed door trim panel-inc: hard armrest, grab handle, reflector
- Color-keyed instrument panel w/dual cupholders- Color-keyed molded cloth headliner
- Color-keyed scuff plates- Dual front color-keyed coat hooks
- Front door operated dome lamp w/time delay off- Front passenger assist handle
- Gray fabric back panel cover- Inside hood release
- Instrumentation-inc: tachometer, voltmeter, trip odometer, oil pressure/ coolant temp/fuel gauges, indicator lights
- Vinyl sun visors

Mechanical

- (6) 225/70R19.5F all-season SBR BSW tires
- 4-speed electronic automatic transmission w/OD- 6.8L (415) SOHC SEFI V10 engine
- Pwr 4-wheel anti-lock disc brakes- (6) 19.5" x 6.0" 8-hole styled steel wheels
- 11,420# maximum payload- 141" WB
- 17,500# GVWR (5600 front/13,500 rear), springs (5600 front/13,500 rear), axles (6000 front/13,500 rear)
- 36 gallon fuel tank-inc: auxiliary fuel tap - 4-pin trailer tow wiring- 4.88 rear axle ratio
- 72 amp/hr (650 CCA) maintenance-free battery- 95 amp alternator- Front stabilizer bar
- HD gas shock absorbers- Mono-beam front axle- Pwr steering- Rear wheel drive

Option Packages

Factory Installed Packages

7.3L (444) DI V8 TURBO-DIESEL ENGINE

-inc: 6000# front axle/springs, 130 amp alt, dual 78 amp/hr batteries, engine block heater, exhaust back pressure valve	\$4,250
---	---------

Option Packages Total

\$4,250

King of Cars and Trucks

King of Cars and Trucks

View this car on our website at njtruckking.com/6462869

Website: njtruckking.com

Phone: 856-693-3181

Map: [1229 Broadway, Westville, New Jersey 08093](#)

