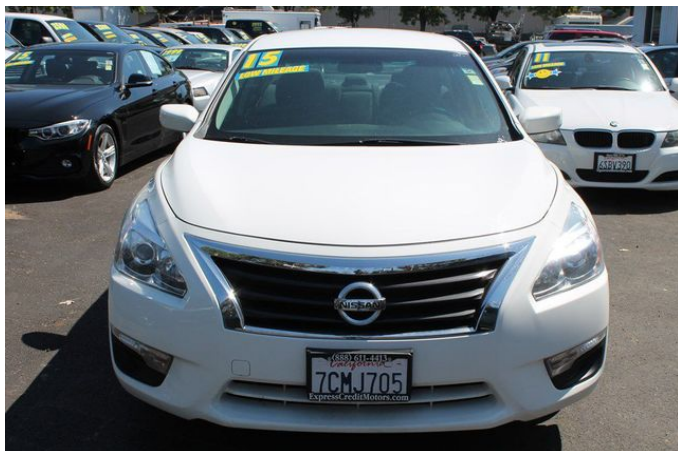


## 2015 Nissan Altima 2.5

View this car on our website at [expresscreditmotors.com/6460183/ebrochure](http://expresscreditmotors.com/6460183/ebrochure)



Our Price **\$0**

### Specifications:

<b>Year:</b>	2015
<b>VIN:</b>	1N4AL3AP2FN882735
<b>Make:</b>	Nissan
<b>Stock:</b>	50957
<b>Model/Trim:</b>	Altima 2.5
<b>Condition:</b>	Pre-Owned
<b>Body:</b>	Sedan
<b>Exterior:</b>	WHITE
<b>Engine:</b>	Engine: 2.5L DOHC 16-Valve I-4
<b>Interior:</b>	Cloth
<b>Mileage:</b>	32,983
<b>Drivetrain:</b>	Front Wheel Drive
<b>Economy:</b>	City 27 / Highway 38

---

2015 Nissan Altima 2.5

Express Credit Motors - 408-288-8001 - View this car on our website at [expresscreditmotors.com/6460183/ebrochure](http://expresscreditmotors.com/6460183/ebrochure)

## Our Location :



2015 Nissan Altima 2.5

Express Credit Motors - 408-288-8001 - View this car on our website at [expresscreditmotors.com/6460183/ebrochure](http://expresscreditmotors.com/6460183/ebrochure)

## Installed Options

### Interior

- Front Bucket Seats -inc: 6-way manual adjustable driver's seat and 4-way manual adjustable passenger's seat
- 60-40 Folding Bench Front Facing Fold Forward Seatback Rear Seat
- Manual Tilt/Telescoping Steering Column
- Gauges -inc: Speedometer, Odometer, Engine Coolant Temp, Tachometer, Trip Odometer and Trip Computer
- Power Rear Windows- Front Cupholder- Rear Cupholder- Front Cigar Lighter(s)- Ashtray
- Proximity Key For Push Button Start Only - Valet Function
- Remote Keyless Entry w/Integrated Key Transmitter, 2 Door Curb/Courtesy, Illuminated Ignition Switch and Panic Button
- Remote Releases -Inc: Power Cargo Access and Mechanical Fuel
- Manual Air Conditioning- HVAC -inc: Underseat Ducts- Illuminated Locking Glove Box
- Driver Foot Rest
- Interior Trim -inc: Metal-Look Instrument Panel Insert, Metal-Look Door Panel Insert, Metal-Look Console Insert and Chrome Interior Accents
- Full Cloth Headliner- Cloth Door Trim Insert- Urethane Gear Shift Knob- Cloth Seat Trim
- Day-Night Rearview Mirror- Driver And Passenger Visor Vanity Mirrors
- Full Floor Console w/Covered Storage, Mini Overhead Console w/Storage and 2 12V DC Power Outlets
- Front And Rear Map Lights- Regular Dome Lighting- Full Carpet Floor Covering
- Carpet Floor Trim and Carpet Trunk Lid/Rear Cargo Door Trim
- Cargo Area Concealed Storage- Cargo Space Lights
- FOB Controls -inc: Trunk/Hatch/Tailgate- Driver / Passenger And Rear Door Bins
- Power 1st Row Windows w/Driver 1-Touch Up/Down- Delayed Accessory Power
- Power Door Locks w/Autolock Feature- Systems Monitor- Trip Computer
- Outside Temp Gauge- Analog Display
- Manual Adjustable Front Head Restraints and Fixed Rear Head Restraints
- Front Center Armrest w/Storage and Rear Center Armrest- 1 Seatback Storage Pocket
- Perimeter Alarm- Engine Immobilizer- 2 12V DC Power Outlets

## Exterior

- Wheels: 16" x 7.0" Steel w/Full Covers- Tires: P215/60TR16 AS- Steel Spare Wheel
- Compact Spare Tire Mounted Inside Under Cargo- Clearcoat Paint
- Body-Colored Front Bumper- Body-Colored Rear Bumper
- Chrome Side Windows Trim and Black Front Windshield Trim - Chrome Door Handles
- Body-Colored Power Side Mirrors- Fixed Rear Window w/Defroster- Light Tinted Glass
- Speed Sensitive Variable Intermittent Wipers- Front Windshield -inc: Sun Visor Strip
- Galvanized Steel/Aluminum Panels- Black Grille w/Chrome Surround
- Trunk Rear Cargo Access- Auto Off Projector Beam Halogen Headlamps w/Delay-Off

## Safety

- Front Bucket Seats -inc: 6-way manual adjustable driver's seat and 4-way manual adjustable passenger's seat
- 60-40 Folding Bench Front Facing Fold Forward Seatback Rear Seat
- Manual Tilt/Telescoping Steering Column
- Gauges -inc: Speedometer, Odometer, Engine Coolant Temp, Tachometer, Trip Odometer and Trip Computer
- Power Rear Windows- Front Cupholder- Rear Cupholder- Front Cigar Lighter(s)- Ashtray
- Proximity Key For Push Button Start Only - Valet Function
- Remote Keyless Entry w/Integrated Key Transmitter, 2 Door Curb/Courtesy, Illuminated Ignition Switch and Panic Button
- Remote Releases -Inc: Power Cargo Access and Mechanical Fuel
- Manual Air Conditioning- HVAC -inc: Underseat Ducts- Illuminated Locking Glove Box
- Driver Foot Rest
- Interior Trim -inc: Metal-Look Instrument Panel Insert, Metal-Look Door Panel Insert, Metal-Look Console Insert and Chrome Interior Accents
- Full Cloth Headliner- Cloth Door Trim Insert- Urethane Gear Shift Knob- Cloth Seat Trim
- Day-Night Rearview Mirror- Driver And Passenger Visor Vanity Mirrors
- Full Floor Console w/Covered Storage, Mini Overhead Console w/Storage and 2 12V DC Power Outlets
- Front And Rear Map Lights- Regular Dome Lighting- Full Carpet Floor Covering
- Carpet Floor Trim and Carpet Trunk Lid/Rear Cargo Door Trim
- Cargo Area Concealed Storage- Cargo Space Lights
- FOB Controls -inc: Trunk/Hatch/Tailgate- Driver / Passenger And Rear Door Bins
- Power 1st Row Windows w/Driver 1-Touch Up/Down- Delayed Accessory Power
- Power Door Locks w/Autolock Feature- Systems Monitor- Trip Computer
- Outside Temp Gauge- Analog Display
- Manual Adjustable Front Head Restraints and Fixed Rear Head Restraints
- Front Center Armrest w/Storage and Rear Center Armrest- 1 Seatback Storage Pocket
- Perimeter Alarm- Engine Immobilizer- 2 12V DC Power Outlets

## Mechanical

- Engine: 2.5L DOHC 16-Valve I-4- Transmission: Xtronic CVT (Continuously Variable)
- Front-Wheel Drive- 4.83 Axle Ratio
- 550CCA Maintenance-Free Battery w/Run Down Protection- 110 Amp Alternator
- 4211# Gwvr- Gas-Pressurized Shock Absorbers- Front And Rear Anti-Roll Bars
- Electric Power-Assist Speed-Sensing Steering- 18 Gal. Fuel Tank
- Quasi-Dual Stainless Steel Exhaust w/Chrome Tailpipe Finisher
- Strut Front Suspension w/Coil Springs- Multi-Link Rear Suspension w/Coil Springs
- 4-Wheel Disc Brakes w/4-Wheel ABS, Front Vented Discs, Brake Assist and Hill Hold Control

Express Credit Motors

[expresscreditmotors.com](http://expresscreditmotors.com)

408-288-8001

1334 South 1st Street

SAN JOSE, CA 95110

© 2019 AutoRevo - All rights reserved. - Powered by AutoRevo