

# 2004 Lexus SC 430 Convertible

View this car on our website at [carbuffs.com/6454887/ebrochure](http://carbuffs.com/6454887/ebrochure)

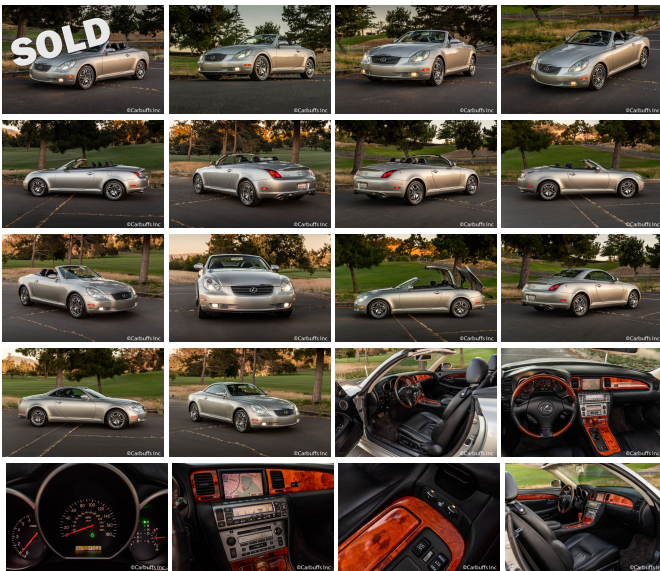


Our Price **\$0**

## Specifications:

<b>Year:</b>	2004
<b>VIN:</b>	JTHFN48Y840058973
<b>Make:</b>	Lexus
<b>Model/Trim:</b>	SC 430 Convertible
<b>Condition:</b>	Pre-Owned
<b>Body:</b>	Convertible
<b>Exterior:</b>	Millennium Silver Metallic
<b>Engine:</b>	4.3L DOHC SFI 32-valve V8 engine-inc: continuously variable valve timing w/intelligence (VVT-i)
<b>Interior:</b>	Black Leather
<b>Transmission:</b>	Automatic
<b>Mileage:</b>	1
<b>Drivetrain:</b>	Rear Wheel Drive
<b>Economy:</b>	City 18 / Highway 23

Senior owned! Excellent color combo of millenium silver exterior with black leather interior. Smooth and powerful 300hp 4.3L engine with automatic transmission. Factory navigation with Mark Levinson premium sound. Heated seats. Power convertible top. Only 55k miles. The owner took the car to Lexus of Concord to be inspected before bringing it to me to sell it. The resulting service included: replacement of timing belt and waterpump, new front and rear brake pads, oil service, brake fluid flush and new rear trunk struts. The service cost \$2,600 and the receipts are available. Runs and drives excellent. Clean title.



2004 Lexus SC 430 Convertible

Carbuffs - (925) 671-2010 - View this car on our website at [carbuffs.com/6454887/ebrochure](http://carbuffs.com/6454887/ebrochure)

**Our Location :**



2004 Lexus SC 430 Convertible  
 Carbuffs - (925) 671-2010 - View this car on our website at [carbuffs.com/6454887/ebrochure](http://carbuffs.com/6454887/ebrochure)

**Installed Options**

**Interior**

- 3-spoke wood/leather-wrapped pwr tilt/telescopic steering wheel w/auto tilt-away, audio/cruise controls
- Four-sensor tire pressure warning system
- Key-integrated multi-function remote entry system w/audible lock/2-stage unlock confirmation, trunk release, panic function
- (2) front cup holders w/wood cover panel
- 10-way leather heated pwr front seats w/adjustable headrests & pwr lumbar
- 2-level center console w/lockable lower box
- 2-position memory system-inc: side mirrors, steering wheel, driver/passenger seat settings (excluding pwr lumbar)
- Auto 3-position pwr mast antenna & FM diversity RDS antenna
- Automatic climate control-inc: lap vents, soft-touch controls, LCD display
- Birds eye maple or walnut wood trim-inc: center console, doors, instrument panel
- Covered coin case- Cruise control- Cut pile carpeting
- DVD navigation system-inc: 3-position tilt-screen, pwr wood cover panel- Digital clock
- Digital odometer w/(2) trip meters- Driver/passenger illuminated vanity mirrors w/cover
- Electrochromic rearview mirror- Electronic programmable garage door opener
- FM sub-antenna imprinted in windshield glass - Floor mats- Front individual map lights
- Front seatback pockets- Full trunk trim w/cut pile carpeting
- Illuminated entry/exit system-inc: dome, door courtesy, ignition
- Illuminated glove box, trunk, ashtray- Illuminated scuff plates
- Instrumentation-inc: 8,000-rpm tachometer, 180-mph speedometer, coolant temp, fuel/coolant/oil level gauges, compass
- Integrated rear seat headrests
- Mark Levinson 240-watt AM/FM audio system-inc: in-dash 6-disc CD changer, auto-reverse cassette, (9) speakers w/subwoofer, radio data system (RDS), automatic sound levelizer (ASL), separate EQ settings for top up/down
- Net pocket located by the front passenger lap vent - Outside temp gauge
- Prewired for cell phone, transceiver & command module
- Push-open ashtray & cigarette lighter

**Option Packages**

**Factory Installed Packages**

CARGO NET	\$59
LEATHER TRIM	
<b>Option Packages Total</b>	<b>\$59</b>

- Pwr door locks-inc: two-turn driver door unlock, anti-lockout- Pwr fuel filler door release
- Pwr trunk release w/valet lockout- Pwr windows w/auto-up/down
- Rear window defogger w/auto-off timer- Theft deterrent w/engine-immobilizer system
- Trip computer
- Valet lock-out functions-inc: trunk, glove box, lower center console box, convertible roof operation
- Warning lights-inc: oil pressure, battery, engine, parking brake, ABS, air bag, door ajar, seat belt disconnect, tail lamp bulb failure
- Wood shift knob

---

## Exterior

- Daytime running lamps- Chrome accents-inc: grille, door handles, side mirrors
- Color-keyed bumpers, door handles, side mirrors
- Electrochromic heated pwr mirrors w/timed defoggers, reverse auto-tilt down
- Fog lamps integrated into lower air intake- Independent halogen high beam lamps
- No key cylinder for the passenger side door or trunk
- Projector-type high-intensity discharge (HID) automatic headlamps w/washer
- Pwr retractable aluminum hardtop- Rear wind deflector- Tinted glass w/UV reduction
- Variable-intermittent semi-concealed windshield wipers w/mist cycle, graphite coated blades
- Water-repellent door glass

---

## Safety

- 3-spoke wood/leather-wrapped pwr tilt/telescopic steering wheel w/auto tilt-away, audio/cruise controls
- Four-sensor tire pressure warning system
- Key-integrated multi-function remote entry system w/audible lock/2-stage unlock confirmation, trunk release, panic function
- (2) front cup holders w/wood cover panel
- 10-way leather heated pwr front seats w/adjustable headrests & pwr lumbar
- 2-level center console w/lockable lower box
- 2-position memory system-inc: side mirrors, steering wheel, driver/passenger seat settings (excluding pwr lumbar)
- Auto 3-position pwr mast antenna & FM diversity RDS antenna
- Automatic climate control-inc: lap vents, soft-touch controls, LCD display
- Birds eye maple or walnut wood trim-inc: center console, doors, instrument panel
- Covered coin case- Cruise control- Cut pile carpeting
- DVD navigation system-inc: 3-position tilt-screen, pwr wood cover panel- Digital clock
- Digital odometer w/(2) trip meters- Driver/passenger illuminated vanity mirrors w/cover
- Electrochromic rearview mirror- Electronic programmable garage door opener
- FM sub-antenna imprinted in windshield glass - Floor mats- Front individual map lights
- Front seatback pockets- Full trunk trim w/cut pile carpeting
- Illuminated entry/exit system-inc: dome, door courtesy, ignition
- Illuminated glove box, trunk, ashtray- Illuminated scuff plates
- Instrumentation-inc: 8,000-rpm tachometer, 180-mph speedometer, coolant temp, fuel/coolant/oil level gauges, compass
- Integrated rear seat headrests
- Mark Levinson 240-watt AM/FM audio system-inc: in-dash 6-disc CD changer, auto-reverse cassette, (9) speakers w/subwoofer, radio data system (RDS), automatic sound levelizer (ASL), separate EQ settings for top up/down
- Net pocket located by the front passenger lap vent - Outside temp gauge
- Prewired for cell phone, transceiver & command module
- Push-open ashtray & cigarette lighter
- Pwr door locks-inc: two-turn driver door unlock, anti-lockout- Pwr fuel filler door release
- Pwr trunk release w/valet lockout- Pwr windows w/auto-up/down
- Rear window defogger w/auto-off timer- Theft deterrent w/engine-immobilizer system
- Trip computer
- Valet lock-out functions-inc: trunk, glove box, lower center console box, convertible roof operation
- Warning lights-inc: oil pressure, battery, engine, parking brake, ABS, air bag, door ajar, seat belt disconnect, tail lamp bulb failure
- Wood shift knob

---

## Mechanical

- Anti-lock brake system (ABS)- T145/70R17 temporary spare tire
- 18" x 8" 5-spoke aluminum alloy wheels - 19.8 gallon fuel tank w/cap tether
- 4.3L DOHC SFI 32-valve V8 engine-inc: continuously variable valve timing w/intelligence (VVT-i)
- 5-speed automatic electronically controlled transmission w/intelligence (ECT-i)-inc: OD, liquid-cooled transmission oil cooler
- Acoustic control induction system II (ACIS-II)
- Aerodynamic underbody covers-inc: engine, floor, front, rear- Brake assist (BA)

- Computer controlled ignition system w/(2) knock sensors
- Dual stainless steel exhaust w/chrome tips - Electronic brake force distribution (EBD)
- Electronic throttle control system w/intelligence (ETCS-i)
- Engine speed-sensing progressive pwr rack & pinion steering
- Fluid-filled hydraulic rear sub-frame mounts
- Front/rear independent double wishbone suspension w/coil springs, gas-filled shock absorbers
- Front/rear stabilizer bars- Hood struts- P245/40ZR18 summer tires
- Pwr ventilated front/solid rear disc brakes- Rear wheel drive- Tool kit
- Torque-activated powertrain control- Traction control (TRAC)
- Vehicle skid control (VSC) w/on/off switch

---

## Carbuffs

[carbuffs.com](https://carbuffs.com)

(925) 671-2010

2281-A Via De Mercados

Concord, CA 94520

© 2024 AutoRevo - All rights reserved. - Powered by AutoRevo