

njtruckking.com
856-693-3181
1229 Broadway
Westville, New Jersey
08093

King of Cars and
Trucks

2011 FORD F250 SUPER CAB XL 8' BED 6.2L V8 LOW MILES 4X4 1-OWNER

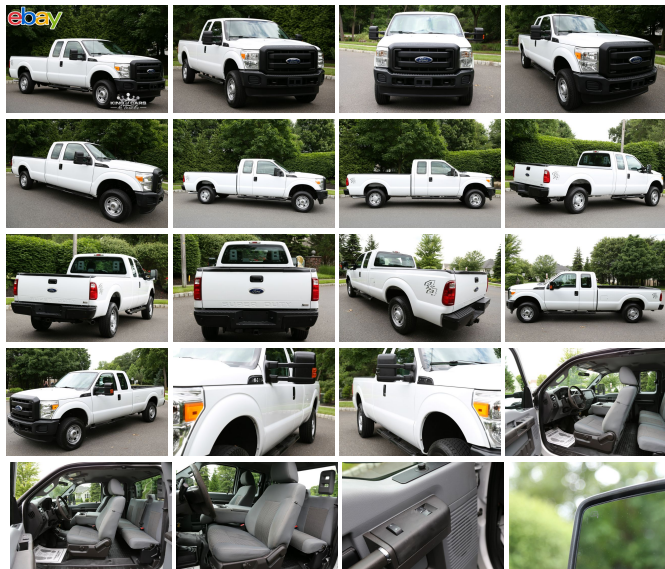
View this car on our website at njtruckking.com/6454183/ebrochure



Our Price **\$17,900**

Specifications:

Year: 2011
VIN: 1FT7X2B69BEC58403
Make: FORD F250 SUPERCAB XL
Model/Trim: 8' BED 6.2L V8 LOW MILES 4X4 1-OWNER
Condition: Pre-Owned
Body: Pickup Truck
Exterior: White
Engine: 6.2L SOHC 16-VALVE EFI NA V8 FLEX-FUEL ENGINE
Interior: Gray
Mileage: 137,291
Drivetrain: 4 Wheel Drive



2011 FORD F250 SUPERCAB LONG BED XL PACKAGE
 4X4

6.2L V8

AUTOMATIC TRANSMISSION

(137,291 ORIGINAL MILES)

1-OWNER

CLEAN CARFAX

BRAND NEW TIRES

BEDLINER

RUNNING BOARDS

TRAILER BRAKE CONTROL

UPFITTER SWITCHES

METICULOUSLY MAINTAINED

TRUCK IS SPOTLESS!

YOU WILL NOT FIND A NICER USED PICKUP ANYWHERE!

WILL NOT LAST !

\$17,900

2011 FORD F250 SUPERCAB XL 8' BED 6.2L V8 LOW MILES 4X4 1-OWNER

King of Cars and Trucks - 856-693-3181 - View this car on our website at njtruckking.com/6454183/ebrochure

Our Location :



2011 FORD F250 SUPERCAB XL 8' BED 6.2L V8 LOW MILES 4X4 1-OWNER

King of Cars and Trucks - 856-693-3181 - View this car on our website at njtruckking.com/6454183/ebrochure

Installed Options

Interior

- Air conditioning
- HD vinyl 40/20/40 split bench front seat -inc: center armrest, cupholder, storage
- (2) aux pwr outlets in instrument panel - (4) air registers w/positive shut-off
- 3-blink lane change signal- Black vinyl full-floor covering- Color-keyed cloth headliner
- Color-keyed molded door trim panel-inc: hard armrest, grab handle, reflector
- Color-keyed scuff plates- Dash-top tray- Driver & front passenger grab handles
- Driver manual lumbar support- Dual color-keyed coat hooks
- Dual color-keyed vinyl sunvisors-inc: driver-side pocket, passenger-side mirror insert
- Front door operated dome lamp w/time delay off & IP switch - Front map lamps
- Front passenger-side roof ride handle- Glove box
- Instrument panel mounted storage bin & trash bag hook
- Multifunction switch message center -inc: ice blue lighting, 3-button message control on steering wheel
- Oil minder system
- Overhead console -inc: storage bins for garage door opener & sunglasses
- SecurILock anti-theft ignition- Tilt/telescoping steering column
- Vinyl 60/40 fold-up rear split bench seat

Exterior

- (5) LT245/75R17E all-season BSW tires- Full-size spare tire w/lock & carrier
- 17" argent painted steel wheels -inc: painted hub covers & center ornaments
- Black door handles- Black molded-in-color grille- Black painted rear bumper
- Black painted steel front bumper w/grained molded-in-color top cover & black lower air dam
- Box-rail & tailgate top-edge moldings- Dual beam jewel-effect headlamps
- Dual rear access doors- Flip-out rear quarter windows- Front fender vents
- Front/rear license plate brackets- Interval windshield wipers
- Manual telescoping trailer tow mirrors w/manual glass- Pickup box/cargo lights
- Removable locking tailgate w/black handle & TailGate Assist - Solar tinted glass
- Underhood service light

Safety

- Air conditioning
- HD vinyl 40/20/40 split bench front seat -inc: center armrest, cupholder, storage
- (2) aux pwr outlets in instrument panel - (4) air registers w/positive shut-off
- 3-blink lane change signal- Black vinyl full-floor covering- Color-keyed cloth headliner
- Color-keyed molded door trim panel-inc: hard armrest, grab handle, reflector
- Color-keyed scuff plates- Dash-top tray- Driver & front passenger grab handles
- Driver manual lumbar support- Dual color-keyed coat hooks
- Dual color-keyed vinyl sunvisors-inc: driver-side pocket, passenger-side mirror insert
- Front door operated dome lamp w/time delay off & IP switch - Front map lamps
- Front passenger-side roof ride handle- Glove box
- Instrument panel mounted storage bin & trash bag hook
- Multifunction switch message center -inc: ice blue lighting, 3-button message control on steering wheel
- Oil minder system
- Overhead console -inc: storage bins for garage door opener & sunglasses
- SecurILock anti-theft ignition- Tilt/telescoping steering column
- Vinyl 60/40 fold-up rear split bench seat

Mechanical

- 12.5K trailer hitch receiver -inc: 2" hitch
- TorqShift 6-speed automatic transmission w/tow/haul mode (REQ: 996 Engine)
- (2) front tow hooks- 157-amp HD alternator- 2-ton mechanical jack
- 3.73 axle ratio (REQ: 996 Engine)- 4-wheel drive
- 6.2L SOHC 16-valve EFI NA V8 flex-fuel engine -inc: engine idle meter
- 72 amp/hr (650 CCA) battery
- 8' pickup box -inc: (6) tie-down hooks, partitionable & stackable storage
- Front stabilizer bar- HD gas shock absorbers - Manual transfer case & hubs
- Mono-beam front axle w/coil spring suspension- Pwr 4-wheel disc brakes w/vacuum boost
- Pwr steering w/steering damper- Stationary elevated engine idle control (SEIC)
- Trailer tow pkg -inc: 7-wire harness w/relays, 7/4 pin combination connector

Option Packages

Factory Installed Packages

6.2L SOHC 16-VALVE EFI NA V8 FLEX-FUEL ENGINE
-inc: engine idle meter

King of Cars and Trucks

njtrucking.com

856-693-3181

1229 Broadway

Westville, New Jersey 08093

© 2024 AutoRevo - All rights reserved. - Powered by AutoRevo