

2017 RAM 5500 SLT VULCAN ROLLBACK 6.7L TURBO DIESEL 6K MILES 1-OWNER

View this car on our website at njtruckking.com/6434765/ebrochure



Our Price **\$69,900**

Specifications:

Year:	2017
VIN:	3C7WRMDL3HG551948
Make:	RAM 5500 SLT VULCAN
Model/Trim:	ROLLBACK 6.7L TURBO DIESEL 6K MILES 1-OWNER
Condition:	Pre-Owned
Body:	Pickup Truck
Exterior:	White
Engine:	ENGINE: 6.7L I6 CUMMINS TURBO DIESEL
Interior:	Gray
Mileage:	6,011
Drivetrain:	Rear Wheel Drive

~~ULTRA RARE ROLLBACK PRIVATELY OWNED !!

ONE OF A KIND

2017 RAM 5500 2-CAR ROLLBACK

~SLT PACKAGE~

6.7L CUMMINS TURBO DIESEL

AUTOMATIC TRANSMISSION

(6,011 ORIGINAL / ACTUAL MILES)

1-OWNER

1-DRIVER

METICULOUSLY MAINTAINED

VULCAN STEEL BED

W/WHEELLIFT

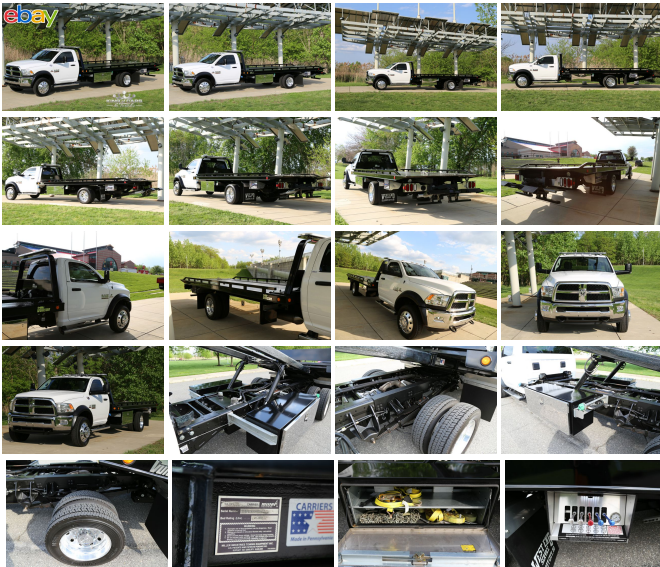
STROBE LIGHT PACKAGE

DUAL TOOLBOX

ALCOA WHEELS

LED LIGHTS

ALL CHAINS AND STRAPS INCLUDED ECT..



BEST COLOR COMBO

ALL THE OPTIONS !

STROBE LIGHTS

LED LIGHTS

ORIGINAL OWNERS MANUALS

ORIGINAL PAPERWORK

THIS TRUCK IS IN LIKE BRAND NEW !

ONLY USED TO HAUL CARS FOR SMALL PRIVATE AUTO DEALER!

TRUCK IS IMMACULATE LIKE BRAND NEW!

NON SMOKER..NO PAINTWORK

LOOKS , RUNS , DRIVES , AND SMELLS NEW !

YOU WILL NOT FIND A NICER USED ROLLBACK ANYWHERE!

WILL NOT LAST !

BEST OF THE BEST

DON'T SNOOZE AND LOSE BECAUSE YOU WILL NOT FIND
ANOTHER LIKE IT !

SAVE THOUSANDS OVER NEW !!!

\$69,900

2017 RAM 5500 SLT VULCAN ROLLBACK 6.7L TURBO DIESEL 6K MILES 1-OWNER

King of Cars and Trucks - 856-693-3181 - View this car on our website at njtruckking.com/6434765/ebrochure

Our Location :



Installed Options

Interior

- 40/20/40 Split Bench Seat- Floor Covering Carpet -inc: Front Floor Mats
- Passenger Visor Vanity Mirror- 2 12V DC Power Outlets
- 4-Way Passenger Seat -inc: Manual Recline and Fore/Aft Movement - Analog Display
- Cruise Control w/Steering Wheel Controls- Day-Night Rearview Mirror
- Delayed Accessory Power- Electronically Controlled Throttle
- Fade-To-Off Interior Lighting- Front Center Armrest w/Storage- Front Cupholder
- Full Cloth Headliner
- Gauges -inc: Speedometer, Odometer, Voltmeter, Oil Pressure, Engine Coolant Temp, Tachometer, Oil Temperature, Transmission Fluid Temp, Engine Hour Meter and Trip Odometer
- Glove Box- Instrument Panel Bin, Dashboard Storage, Driver And Passenger Door Bins
- Manual Adjust Seats- Manual Adjustable Front Head Restraints- Manual Air Conditioning
- Manual Tilt Steering Column- Redundant Digital Speedometer
- Sentry Key Engine Immobilizer- Systems Monitor- Urethane Gear Shift Knob

Exterior

- Tires: 225/70R19.5G All Position- Wheels: 19.5" x 6.0" Steel- Black Door Handles
- Black Fender Flares- Black Manual Side Mirrors w/Convex Spotter and Manual Folding
- Black Side Windows Trim and Black Front Windshield Trim - Cab Clearance Lights
- Fixed Rear Window- Front Bumper w/2 Tow Hooks- Front License Plate Bracket
- Fully Automatic Aero-Composite Halogen Headlamps w/Delay-Off
- Fully Galvanized Steel Panels- Light Tinted Glass
- Manual Extendable Trailer Style Mirrors- Variable Intermittent Wipers

Safety

- 40/20/40 Split Bench Seat- Floor Covering Carpet -inc: Front Floor Mats
- Passenger Visor Vanity Mirror- 2 12V DC Power Outlets
- 4-Way Passenger Seat -inc: Manual Recline and Fore/Aft Movement - Analog Display
- Cruise Control w/Steering Wheel Controls- Day-Night Rearview Mirror
- Delayed Accessory Power- Electronically Controlled Throttle
- Fade-To-Off Interior Lighting- Front Center Armrest w/Storage- Front Cupholder
- Full Cloth Headliner
- Gauges -inc: Speedometer, Odometer, Voltmeter, Oil Pressure, Engine Coolant Temp, Tachometer, Oil Temperature, Transmission Fluid Temp, Engine Hour Meter and Trip Odometer
- Glove Box- Instrument Panel Bin, Dashboard Storage, Driver And Passenger Door Bins
- Manual Adjust Seats- Manual Adjustable Front Head Restraints- Manual Air Conditioning
- Manual Tilt Steering Column- Redundant Digital Speedometer
- Sentry Key Engine Immobilizer- Systems Monitor- Urethane Gear Shift Knob

Mechanical

- Engine: 6.4L V8 Heavy Duty HEMI
- Transmission w/Driver Selectable Mode, Sequential Shift Control and Oil Cooler
- Transmission: 6-Speed Auto Aisin AS66RC HD - 10758# Maximum Payload
- 180 Amp Alternator- 4-Wheel Disc Brakes w/4-Wheel ABS, Front And Rear Vented Discs
- 4.44 Axle Ratio- 50 State Emissions- 52 Gal. Fuel Tank
- 730CCA Maintenance-Free Battery w/Run Down Protection- Engine Oil Cooler
- Front Anti-Roll Bar and Rear HD Anti-Roll Bar- GVWR: 18,000 lbs- HD Shock Absorbers
- Hydraulic Power-Assist Steering- Leading Link Front Suspension w/Coil Springs
- Leaf Rear Suspension w/Leaf Springs- Mechanical Limited Slip Differential
- Rear-Wheel Drive- Single Stainless Steel Exhaust
- Towing w/Harness and Trailer Sway Control- Uppfitter Switches

Option Packages

Factory Installed Packages

ENGINE: 6.7L I6 CUMMINS TURBO DIESEL

-inc: Cummins Turbo Diesel Badge, 87 mph Maximum Speed, Current Generation Engine Controller, Smart Diesel Exhaust Brake, Selective Catalytic Reduction (Urea), RAM Active Air	\$7,345
--------------------------------------------------------------------------------------------------------------------------------------------------------------------------------	---------

Option Packages Total

\$7,345

856-693-3181

1229 Broadway

Westville, New Jersey 08093

© 2024 AutoRevo - All rights reserved. - Powered by AutoRevo