

2015 Buick LaCrosse Premium II

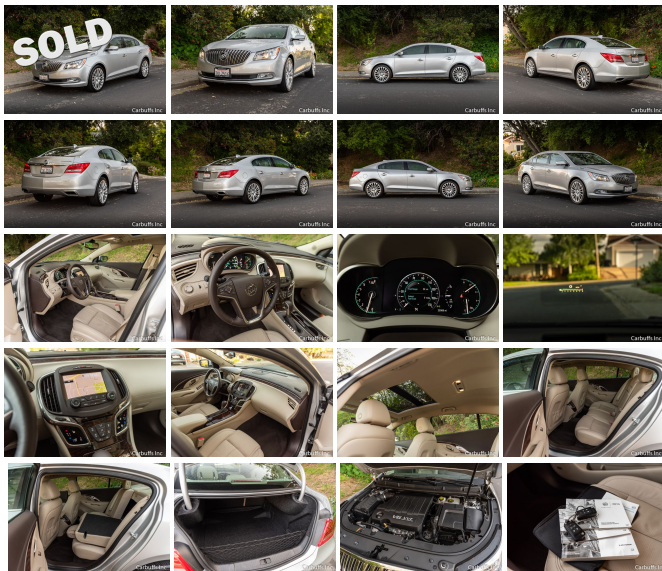
View this car on our website at carbuffs.com/6429430/ebrochure



Our Price **\$0**

Specifications:

Year:	2015
VIN:	1G4GF5G38FF317178
Make:	Buick
Model/Trim:	LaCrosse Premium II
Condition:	Pre-Owned
Body:	Sedan
Exterior:	Quicksilver Metallic
Engine:	ENGINE, 3.6L SIDI DOHC V6 VVT
Interior:	Light Neutral Leather
Transmission:	TRANSMISSION, 6-SPEED AUTOMATIC, ELECTRONICALLY CONTROLLED WITH OVERDRIVE
Mileage:	26,500
Drivetrain:	Front Wheel Drive
Economy:	City 18 / Highway 28



Beautiful luxury sedan! Quicksilver metallic exterior with light tan leather interior. 3.6L V6 engine with automatic transmission. Driver confidence package #1 includes (UKC) Side Blind Zone Alert with Lane Change Alert, (UFG) Rear Cross-Traffic Alert, (UFL) Lane Departure Warning, (UEU) Forward Collision Alert, (UE4) Following Distance Sensor Indicator, (UV6) Head-Up Display, (T3U) front halogen fog lamps and (T4F) Xenon Highintensity Discharge (HID) articulating headlamps. Also includes heated and cooled front seats, oversized power moonroof, rear backup camera plus parking sensors, navigation, head-up display, split folddown rear seats and more. California car. Only 26k miles. Clean title and Carfax report. Still under the full 4 year 50,000 mile factory warranty.

Our Location :



2015 Buick LaCrosse Premium II
 Carbuffs - (925) 671-2010 - View this car on our website at carbuffs.com/6429430/ebrochure

Installed Options

Interior

- Floor mats, carpeted front with anchors - Floor mats, carpeted rear- Power outlet, 120-volt
- Seat adjuster, driver 8-way power- Seat adjuster, front passenger 8-way power
- Theft-deterrent system, content theft alarm
- Theft-deterrent system, electrical, unauthorized entry
- Universal Home Remote includes garage door opener, 3-channel programmable
- Visors, driver and front passenger illuminated vanity mirrors, sliding
- Windows, power, rear with Express-Down
- Air conditioning, dual-zone automatic climate control with individual climate settings for driver and right-front passenger
- Air filtration system with Charcoal filter- Air vents, rear, heating/cooling
- Armrest, rear center with 2 integral cup holders
- Assist handles, front passenger and rear outboard with coat hooks on rear passenger assist handles
- Brake, parking, electronic- Cargo net- Compass display- Cruise control
- Cup holders, 2 front console, covered, 2 rear armrest- Defogger, rear-window electric
- Display, enhanced driver instrument information , 8" multi-color configurable
- Door locks, power programmable with lockout protection
- E-Z Key Passive Entry System, extended range with (BTM) keyless start and automatic door lock/unlock features
- Head restraints, 4-way adjustable, front, up/down, fore/aft
- Headrests, rear, outboard seats, adjustable (up/down), folds back onto rear package shelf
- Lighting, custom interior front and rear reading, front and rear door and console Ice Blue ambient lighting, front foot well, puddle lights and instrument panel light pipe
- Memory settings includes "presets" for 2 drivers, 8-way power driver/passenger seat with easy exit driver seat and outside mirrors
- Mirror, inside rearview auto-dimming
- Personalization features includes driver memory, 2 specific Remote Keyless Entry fob controls for the driver identification greeting, audio system settings, station presets, content theft, automatic door locks, activation verification, perimeter lighting, delayed locking and (UD7) Ultrasonic Rear Parking Assist

Option Packages

Factory Installed Packages

ENGINE, 3.6L SIDI DOHC V6 VVT
 (304 hp [226.7 kW] @ 6800 rpm, 264 lb-ft of torque [356.4 N-m] @ 5300 rpm)

TRANSMISSION, 6-SPEED AUTOMATIC, ELECTRONICALLY CONTROLLED WITH OVERDRIVE
 includes Driver Shift Control

DRIVER CONFIDENCE PACKAGE #1
 includes (UKC) Side Blind Zone Alert with Lane Change Alert, (UFG) Rear Cross-Traffic Alert, (UFL) Lane Departure Warning, (UEU) Forward Collision Alert, (UE4) Following Distance Sensor Indicator, (UV6) Head-Up Display, (T3U) front halogen fog lamps and (T4F) Xenon Highintensity Discharge (HID) articulating headlamps

\$2,125

FORWARD COLLISION ALERT

HEAD-UP DISPLAY

HEADLAMPS, ARTICULATING

HEADLAMPS, HIGH INTENSITY DISCHARGE (HID), XENON PROJECTOR LAMPS WITH ADAPTIVE FORWARD LIGHTING, FLASH-TO-PASS FEATURE
 automatic on and off, automatic delay and

- Power outlet, front auxiliary, 12-volt- Power outlet, rear auxiliary, 12-volt
- QuietTuning, Buick process to reduce, block and absorb noise and vibration to create a quiet interior cabin
- Remote vehicle starter system
- Retained accessory power power windows, audio system and sunroof remain operational after ignition is switched off for 10 minutes or until a door is opened
- Seat adjuster, driver 4-way power lumbar- Seat trim, perforated leather-appointed seating
- Seat, rear split-folding- Seat, ventilated driver- Seat, ventilated passenger, front
- Seats, front bucket with seatback map pockets - Seats, heated driver and front passenger
- Sensor, humidity and windshield temperature- Shift knob, leather-wrapped
- Sill plates, front, bright- Steering column, tilt and telescopic, manual
- Steering wheel controls, mounted audio and cruise controls- Steering wheel, heated
- Steering wheel, leather-wrapped, 4-spoke- Sunshade, power, rear
- Windows, power with driver Express-Up/Down
- Windows, power with front passenger Express-Up/Down

Exterior

- Tire, compact spare, T125/70R17, blackwall- Wheel, compact spare, 17" (43.2 cm) steel
- Door handles, body-color with chrome strips- Glass, Solar-Ray light-tinted
- Glass, acoustic, laminated front-side and windshield- Grille, chrome waterfall
- Headlamp control, automatic on and off
- Headlamps, halogen composite with flash-to-pass feature automatic on and off, automatic delay and warning buzzer
- Lamp, LED center high-mounted stop/brake (CHMSL)- Lamps, rear stop tail, LED
- Mirrors, outside heated power-adjustable, manual-folding with integrated turn signal indicators, ground illumination and driver-side memory and auto-dimming feature
- Moldings, bodyside, bright- Shutters, front lower grille, active
- Tires, P245/40R20 all-season, blackwall
- Wheels, 20" (50.8 cm) machine-faced Silver painted aluminum
- Windshield, solar absorbing- Wipers, front intermittent, structure-less wiper blades

Safety

- Floor mats, carpeted front with anchors- Floor mats, carpeted rear- Power outlet, 120-volt
- Seat adjuster, driver 8-way power- Seat adjuster, front passenger 8-way power
- Theft-deterrent system, content theft alarm
- Theft-deterrent system, electrical, unauthorized entry
- Universal Home Remote includes garage door opener, 3-channel programmable
- Visors, driver and front passenger illuminated vanity mirrors, sliding
- Windows, power, rear with Express-Down
- Air conditioning, dual-zone automatic climate control with individual climate settings for driver and right-front passenger
- Air filtration system with Charcoal filter- Air vents, rear, heating/cooling
- Armrest, rear center with 2 integral cup holders
- Assist handles, front passenger and rear outboard with coat hooks on rear passenger assist handles
- Brake, parking, electronic- Cargo net- Compass display- Cruise control
- Cup holders, 2 front console, covered, 2 rear armrest- Defogger, rear-window electric
- Display, enhanced driver instrument information , 8" multi-color configurable
- Door locks, power programmable with lockout protection
- E-Z Key Passive Entry System, extended range with (BTM) keyless start and automatic door lock/unlock features
- Head restraints, 4-way adjustable, front, up/down, fore/aft
- Headrests, rear, outboard seats, adjustable (up/down), folds back onto rear package shelf
- Lighting, custom interior front and rear reading, front and rear door and console Ice Blue ambient lighting, front foot well, puddle lights and instrument panel light pipe
- Memory settings includes "presets" for 2 drivers, 8-way power driver/passenger seat with easy exit driver seat and outside mirrors
- Mirror, inside rearview auto-dimming
- Personalization features includes driver memory, 2 specific Remote Keyless Entry fob controls for the driver identification greeting, audio system settings, station presets, content theft, automatic door locks, activation verification, perimeter lighting, delayed locking and (UD7) Ultrasonic Rear Parking Assist
- Power outlet, front auxiliary, 12-volt- Power outlet, rear auxiliary, 12-volt
- QuietTuning, Buick process to reduce, block and absorb noise and vibration to create a quiet interior cabin
- Remote vehicle starter system
- Retained accessory power power windows, audio system and sunroof remain operational after ignition is switched off for 10 minutes or until a door is opened
- Seat adjuster, driver 4-way power lumbar- Seat trim, perforated leather-appointed seating
- Seat, rear split-folding- Seat, ventilated driver- Seat, ventilated passenger, front
- Seats, front bucket with seatback map pockets - Seats, heated driver and front passenger
- Sensor, humidity and windshield temperature- Shift knob, leather-wrapped
- Sill plates, front, bright- Steering column, tilt and telescopic, manual

automatic on and off, automatic delay and warning buzzer

LICENSE PLATE BRACKET, FRONT

\$15

LPO, LED FOG LAMP KIT

\$570

MOONROOF, POWER, OVERSIZED

\$1,195

REAR CROSS-TRAFFIC ALERT

SEAT TRIM, SEMI ANILINE PERFORATED LEATHER SEATING

SENSOR INDICATOR, FOLLOWING DISTANCE

SIDE BLIND ZONE ALERT WITH LANE CHANGE ALERT

AXLE, 2.77 FINAL DRIVE RATIO

EMISSIONS, CALIFORNIA STATE REQUIREMENTS

QUICKSILVER METALLIC

PREMIUM II PREFERRED EQUIPMENT GROUP
includes standard equipment

AUDIO SYSTEM, BUICK INTELLILINK RADIO WITH NAVIGATION
AM/FM stereo and CD player, includes USB port
and Bluetooth streaming for audio and select
phones

LIGHT NEUTRAL, PERFORATED LEATHER-APPOINTED SEAT
TRIM
includes Cocoa interior accents

SEATS, FRONT BUCKET
with seatback map pockets

Option Packages Total

\$3,905

- Steering wheel controls, mounted audio and cruise controls- Steering wheel, heated
- Steering wheel, leather-wrapped, 4-spoke- Sunshade, power, rear
- Windows, power with driver Express-Up/Down
- Windows, power with front passenger Express-Up/Down

Mechanical

- Alternator, 150 amps- Axle, 2.77 final drive ratio
 - Battery, 70AH, maintenance free with rundown protection, heavy-duty 512 cold-cranking amps
 - Chassis continuously variable real time damping- Driver Shift Controls, tap-up/tap-down
 - Drivetrain, front wheel drive
 - Engine, 3.6L SIDI DOHC V6 VVT (304 hp [226.7 kW] @ 6800 rpm, 264 lb-ft of torque [356.4 N-m] @ 5300 rpm) (E85 FlexFuel capability is not available in CA, CT, DE, MA, MD, ME, NJ, NY, OR, PA, RI, VT and WA)
 - Exhaust, dual-outlet stainless-steel with bright tips integrated in fascia
 - Keyless start, push button- Sport Mode Selectivity- Steering, power
 - Suspension, front, HiPer Strut- Suspension, rear H-arm- Tool kit, road emergency
 - Transmission, 6-speed automatic, electronically controlled with overdrive includes Driver Shift Control
-

Carbuffs

carbuffs.com

(925) 671-2010

2281-A Via De Mercados

Concord, CA 94520

© 2024 AutoRevo - All rights reserved. - Powered by AutoRevo