



## 2012 CHEVROLET CORVETTE C6 Z16 GRAND SPORT 6.2L V8 AUTO 12K MILES RARE CARLISLE BLUE 2LT

**Our Price \$39,900**

View this vehicle on our website at [njtruckking.com](http://njtruckking.com)

King of Cars and Trucks

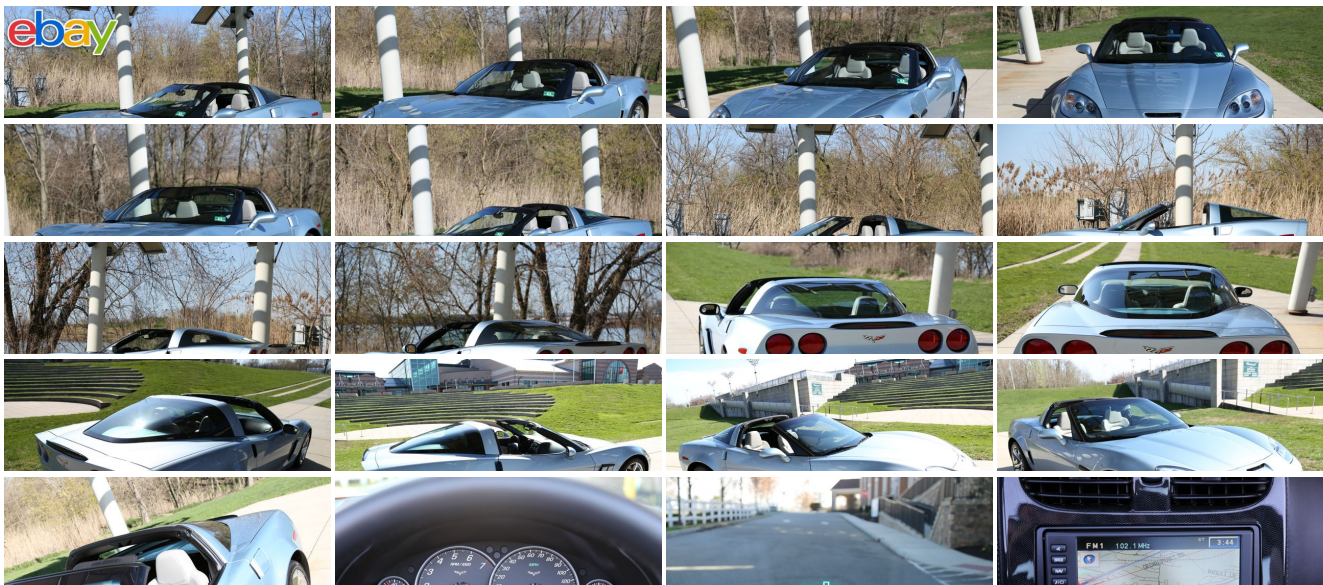
[856-693-3181](tel:856-693-3181)

1229 Broadway , Westville, New Jersey 08093

[Photos](#)

[Details](#)

[Contact](#)



Specifications:

Year:	2012
VIN:	1G1YV2DW4C5106160
Make:	CHEVROLET CORVETTE C6 Z16
Model/Trim:	GRAND SPORT 6.2L V8 AUTO 12K MILES RARE CARLISLE BLUE 2LT
Condition:	Pre-Owned
Body:	Coupe
Exterior:	Blue
Engine:	ENGINE, 6.2L (376 CI) V8 SFI
Interior:	White Leather
Transmission:	TRANSMISSION, 6-SPEED PADDLE SHIFT WITH AUTOMATIC MODES
Mileage:	12,975
Drivetrain:	Rear Wheel Drive
Economy:	City 15 / Highway 25

Vehicle Description

~~ULTRA RARE CARLISLE BLUE ONLY 12K ORIGINAL MILES

2012 CHEVROLET CORVETTE COUPE

~C6 Z16 GRAND SPORT~

6.2L V8

AUTOMATIC TRANSMISSION

( 12,975 ORIGINAL / ACTUAL MILES )

GARAGE KEPT

NON SMOKER

METICULOUSLY MAINTAINED

RUNS , DRIVES, LOOKS , AND SMELLS NEW!

ALL THE OPTIONS

CHROME WHEELS

NAVIGATION

HEADS UP DISPLAY

TO MUCH TO LIST ...

EXTERIOR AND INTERIOR SPOTLESS

YOU WILL NOT FIND NICER VETTE ANYWHERE !

WILL NOT LAST LONG

NONE NICER

RARE FIND

\$39,900

Installed Options	Option Packages
<div>Interior</div> <div><div><div>- Door locks, power programmable with lockout protection</div><div>Must have Accessory Package to get start and Stop auto transmission that enable automatic</div></div></div>	<div>Factory Installed Packages</div> <div></div>

- Keyless Access with push button start and 2 remote transmitters that enable automatic door unlock and open by touching door switch
- OnStar Turn-by-Turn Navigation
- Seats, front bucket with leather seating surfaces includes back angle adjustment
- Stolen Vehicle Assistance
- Air conditioning, dual-zone automatic climate control with individual climate settings for driver and right-front passenger and outside temperature display
- Air filtration system with pollen filter- Cargo net and luggage shade
- Console, floor 2 covered cup holders, ashtray with cigar lighter, auxiliary power outlet and CD storage
- Cruise control, electronic with set and resume speed - Defogger, rear-window, electric
- Floor mats, carpeted- Hatch release, push button open with power hatch pulldown
- Head-Up Display with dot-matrix readouts for street mode, track mode with g-meter, vehicle speed, engine rpm and readings from key gauges including water temperature and oil pressure
- Instrumentation, electronic analog with Driver Information Center and 2-line display
- Lighting, interior with courtesy, cargo and glovebox
- Mirror, inside rearview auto-dimming with compass, includes dual reading lights
- Oil life monitoring system- Seat adjuster, driver 6-way power
- Seat adjuster, front passenger 6-way power - Steering column, Tilt-Wheel, manual
- Steering wheel controls, mounted audio controls
- Steering wheel, 3-spoke leather-wrapped
- Storage, with lockable glovebox, center console and 2 rear compartments with covers (Only includes 1 rear storage compartment with manual transmission.)
- Visors, driver and front passenger illuminated vanity mirrors
- Windows, power with driver and passenger Express-Down

### Exterior

- Roof panel, 1-piece body-color, removable
- Tires, front P275/35ZR18 Eagle F1 Supercar and rear P325/30ZR19 Eagle F1 Supercar run flat
- Wheels, Grand Sport Silver painted aluminum 18" x 9.5" (45.7 cm x 24.1 cm) front and 19" x 12" (48.3 cm x 30.48 cm) rear
- Fog lamps, front, integral in front fascia- Glass, Solar-Ray light-tinted
- Headlamps, dual projector lamps, Xenon, High-Intensity Discharge (HID) low-beam tungsten-halogen high-beam with automatic exterior lamp control
- Mirrors, outside heated power-adjustable and driver-side auto-dimming, body- color
- Wipers, front intermittent

### Safety

- Door locks, power programmable with lockout protection
- Keyless Access with push button start and 2 remote transmitters that enable automatic door unlock and open by touching door switch
- OnStar Turn-by-Turn Navigation
- Seats, front bucket with leather seating surfaces includes back angle adjustment
- Stolen Vehicle Assistance
- Air conditioning, dual-zone automatic climate control with individual climate settings for driver and right-front passenger and outside temperature display
- Air filtration system with pollen filter- Cargo net and luggage shade
- Console, floor 2 covered cup holders, ashtray with cigar lighter, auxiliary power outlet and CD storage
- Cruise control, electronic with set and resume speed - Defogger, rear-window, electric
- Floor mats, carpeted- Hatch release, push button open with power hatch pulldown
- Head-Up Display with dot-matrix readouts for street mode, track mode with g-meter, vehicle speed, engine rpm and readings from key gauges including water temperature and oil pressure
- Instrumentation, electronic analog with Driver Information Center and 2-line display
- Lighting, interior with courtesy, cargo and glovebox
- Mirror, inside rearview auto-dimming with compass, includes dual reading lights
- Oil life monitoring system- Seat adjuster, driver 6-way power
- Seat adjuster, front passenger 6-way power - Steering column, Tilt-Wheel, manual
- Steering wheel controls, mounted audio controls
- Steering wheel, 3-spoke leather-wrapped
- Storage, with lockable glovebox, center console and 2 rear compartments with covers (Only includes 1 rear storage compartment with manual transmission.)
- Visors, driver and front passenger illuminated vanity mirrors
- Windows, power with driver and passenger Express-Down

### Mechanical

- Rear axle, 3.42 ratio, limited slip (Included and only available with (MZ6) 6-speed manual transmission.)
- Transmission, 6-speed manual, short-throw includes launch control, specific gearing and quicker ratios
- Brakes, 4-wheel antilock, 4-wheel disc- Calipers, Silver

ENGINE, 6.2L (376 CI) V8 SFI  
(430 hp [320.6 kW] @ 5900 rpm, 424 lb-ft of torque [572.4 N-m] @ 4600 rpm)

TRANSMISSION, 6-SPEED PADDLE SHIFT WITH AUTOMATIC MODES

\$1,250

2LT PREFERRED EQUIPMENT GROUP  
includes Standard Equipment

\$2,145

Option Packages Total

\$3,395

- Engine access, rear-opening hood
- Engine, 6.2L (376 ci) V8 SFI (430 hp [320.6 kW] @ 5900 rpm, 424 lb-ft of torque [572.4 N-m] @ 4600 rpm)
- Exhaust, aluminized stainless-steel with 3" polished stainless-steel tips
- Performance Package includes dry sump oil system, rear-mounted battery and differential cooler (Deleted when (MYC) 6-speed paddle shift, automatic transmission is ordered.)
- Rear wheel drive- Steering, power, speed-sensitive rack-and-pinion, variable ratio

King of Cars and Trucks

King of Cars and Trucks

View this car on our website at [njtruckking.com/6425621](http://njtruckking.com/6425621)

Website: [njtruckking.com](http://njtruckking.com)

Phone: [856-693-3181](tel:856-693-3181)

Map: [1229 Broadway, Westville, New Jersey 08093](#)

