

2015 FORD F650 XCAB ROLLBACK 6.7L CUMMINS DIESEL LOW MILES 1OWNER

View this car on our website at njtruckking.com/6425230/ebrochure



Our Price **\$64,900**

Specifications:

Year:	2015
VIN:	3FRNX6FC6FV524990
Make:	FORD F650 XCAB ROLLBACK
Model/Trim:	6.7L CUMMINS DIESEL LOW MILES 1OWNER
Condition:	Pre-Owned
Body:	Pickup Truck
Exterior:	Red
Interior:	Gray
Mileage:	109,838
Drivetrain:	Rear Wheel Drive

~~
ULTRA RARE ROLLBACK IN EXCELLENT CONDITION !!
LAST YEAR OF THE FORD F650 WITH THE CUMMINS
ONE OF A KIND

2015 FORD F650 SUPERCAB 2-CAR ROLLBACK

~HARD LOADED~

6.7L CUMMINS TURBO DIESEL

AUTOMATIC TRANSMISSION

(109,838 ORIGINAL / ACTUAL MILES)

1-OWNER

1-DRIVER

CLEAN CARFAX

NO PAINTWORK

RUST FREE TRUCK !

METICULOUSLY MAINTAINED

BRAND NEW MICHELIN TIRES !!!

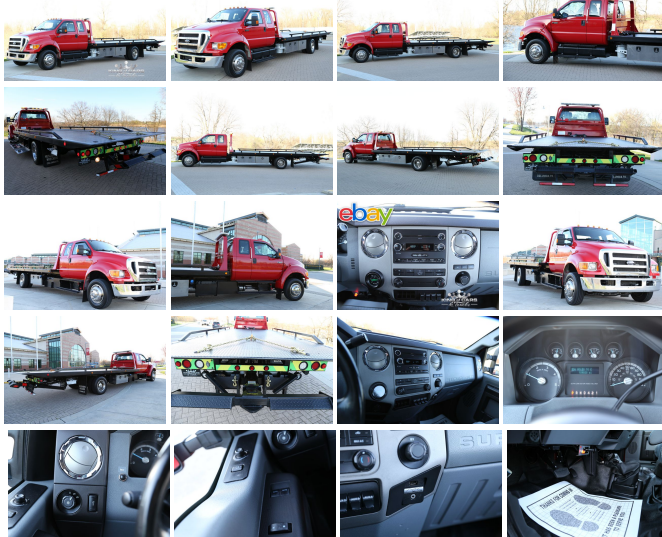
GARAGE KEPT

22" JERR-DAN STEEL BED WITH REMOVABLE RAILS

EXTRA TOOL BOX'S STORAGE BIN CAN AND .11 IMPER SHOT



eBay



EXTRA TOOLS, STORAGE BIN, CAT, AND SOME OTHER CABLES

ALL CHAINS AND STRAPS INCLUDED

BEST COLOR COMBO

ALL THE OPTIONS !

ORIGINAL OWNERS MANUALS

TRUCK IS IMMACULATE !

YOU WILL NOT FIND A NICER USED ROLLBACK ANYWHERE!

WILL NOT LAST !

BEST OF THE BEST

DON'T SNOOZE AND LOSE BECAUSE YOU WILL NOT FIND ANOTHER LIKE IT !

ULTRA RARE FIND PRICED TO SELL !

THIS TRUCK NEW IS \$100K WITH THE UNDERPOWERED POWERSTROKE SAVE \$35K NOW AND HAVE IT WITH THE NOTORIOUS CUMMINS !!!!!!!

\$64,900

2015 FORD F650 XCAB ROLLBACK 6.7L CUMMINS DIESEL LOW MILES 1OWNER

King of Cars and Trucks - 609-504-8808 - View this car on our website at njtruckking.com/6425230/ebrochure

Our Location :



2015 FORD F650 XCAB ROLLBACK 6.7L CUMMINS DIESEL LOW MILES 1OWNER

King of Cars and Trucks - 609-504-8808 - View this car on our website at njtruckking.com/6425230/ebrochure

Installed Options

Interior

- 2 12V DC Power Outlets
- 60-40 Folding Bench Front Facing Fold-Up Cushion Vinyl Rear Seat - Analog Display
- Ashtray- Cruise Control w/Steering Wheel Controls- Delay Off Interior Lighting
- Driver And Front Passenger Armrests- Front Cigar Lighter(s)- Front Cupholder
- Front Map Lights- Full Cloth Headliner- Full Vinyl/Rubber Floor Covering
- Gauges -inc: Speedometer, Odometer, Oil Pressure, Engine Coolant Temp, Tachometer, Trip Odometer and Trip Computer
- Glove Box- Horn- Instrument Panel Bin and Dashboard Storage
- Manual 1st Row Windows- Manual Air Conditioning- Manual Tilt Steering Column
- Mini Overhead Console w/Storage and 2 12V DC Power Outlets
- Passenger Visor Vanity Mirror- Trip Computer
- Two Person Bench Folding Mid Back Passenger Seat w/2 Way Direction Control -inc: Fixed Headrest
- Urethane Gear Shift Knob- Vented Rear Windows
- Vinyl Front Seats w/Carpet Back Material- w/4 Way Direction Control -inc: Fixed Headrest
- 0-Way Passenger Seat- 0-Way Driver Seat

Exterior

- White Steel Disc Front Wheels and White Steel Disc Rear Wheels
- Variable Intermittent Wipers- Tires, Rear Four 11R22.5G Continental HSR2 (498 rev/mile)
- Tires, Front Two 11R22.5G Continental HSR2 (498 rev/mile)- Side Steps
- Sealed Beam Halogen Headlamps- Reverse Opening Rear Doors- Light Tinted Glass
- Hood Grille Mount- Front Splash Guards- Fixed Rear Window
- Composite/Galvanized Steel Panels- Chrome Grille- Chrome Front Bumper
- Cab Clearance Lights
- Black Side Windows Trim, Black Front Windshield Trim and Black Rear Window Trim
- Black Door Handles

Safety

- 2 12V DC Power Outlets
- 60-40 Folding Bench Front Facing Fold-Up Cushion Vinyl Rear Seat - Analog Display
- Ashtray- Cruise Control w/Steering Wheel Controls- Delay Off Interior Lighting
- Driver And Front Passenger Armrests- Front Cigar Lighter(s)- Front Cupholder
- Front Map Lights- Full Cloth Headliner- Full Vinyl/Rubber Floor Covering
- Gauges -inc: Speedometer, Odometer, Oil Pressure, Engine Coolant Temp, Tachometer, Trip Odometer and Trip Computer
- Glove Box- Horn- Instrument Panel Bin and Dashboard Storage
- Manual 1st Row Windows- Manual Air Conditioning- Manual Tilt Steering Column
- Mini Overhead Console w/Storage and 2 12V DC Power Outlets
- Passenger Visor Vanity Mirror- Trip Computer
- Two Person Bench Folding Mid Back Passenger Seat w/2 Way Direction Control -inc: Fixed Headrest
- Urethane Gear Shift Knob- Vented Rear Windows
- Vinyl Front Seats w/Carpet Back Material- w/4 Way Direction Control -inc: Fixed Headrest
- 0-Way Passenger Seat- 0-Way Driver Seat

Mechanical

- Allison 2500 6-Speed, RDS Series On-Off -inc: 5th Generation Controls; Wide Ratio, 6-Speed, With Double Overdrive; With PTO Provision, Less Retarder, With 33,000-lb GVW & GCW Max, On/Off Hwy, RDS Series On-Off, Synthetic Transmission Oil; 20 thru 28 Pints
- Meets Allison TES295 Specification, GVWR Limit: 33,000 lbs
- Chassis
- Cummins (6.7L) ISB 200 HP @ 2300 RPM, Governed @ 2600 RPM -inc: Borg Warner SA75 viscous screw on type fan clutch, Donaldson single stage dry type air cleaner w/restriction indicator, Fleetguard FS19557, w/electric type heater and primer pump - engine mounted fuel/water separator, 520 lb-ft torque @ 1600 RPM, 2600 RPM governed speed, 200 peak HP (Max), Component-manufacturer warranty applies, Subject to change by manufacturer without notice, Starting Motor - 12-Volt, 38 MT, Delco-Remy America Inc. Type 300 Less thermal overcrank protection
- Dual Rear Wheels- Hydraulic Power-Assist Steering- Leaf Front Suspension
- Leaf Rear Suspension w/Multi-Leaf Springs- Rear-Wheel Drive
- Single Aluminized Steel Exhaust- Standard Rear Differential
- Steering Column Lever Mounted Gearshift
- Steering Wheel - Two Spoke, Black PVC, 15.5" Dia. -inc: tilt and cruise controls
- w/4-Wheel ABS

King of Cars and Trucks

njtrucking.com

609-504-8808

1022 N Evergreen Ave

Woodbury, New Jersey 08096

© 2019 AutoRevo - All rights reserved. - Powered by [AutoRevo](#)