



2011 BMW 550i

Our No-Haggle Price \$15,987

Book Retail Value \$18,900

View this vehicle on our website at leesburgautoimport.com

Leesburg Auto Import

Toll Free: 1-866-249-5348, Local: 703-771-7600

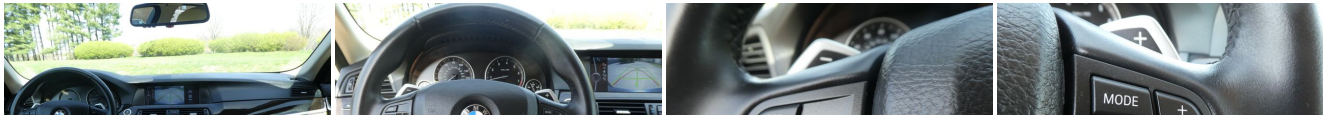
2 Fairfax St SE , Leesburg, Virginia 20175

Photos

Details

Contact





Specifications:

Year:	2011
VIN:	WBAFR9C58BC617687
Make:	BMW
Stock:	617687
Model/Trim:	550i
Condition:	Pre-Owned
Body:	Sedan
Exterior:	Deep Sea Blue Metallic
Engine:	4.4L 32-valve twin-turbocharged V8 engine -inc: 4-overhead camshafts, piezo direct fuel injection, double-VANOS steplessly variable valve timing
Interior:	Leather
Mileage:	70,129
Drivetrain:	Rear Wheel Drive
Economy:	City 15 / Highway 22

Vehicle Description

Welcome to Leesburg Auto Import, the home of the best used cars in the east coast. We pride ourselves on our competitive and unbeatable prices. We buy cars and accept trade in.

Installed Options

Interior

- 10-way power-adjustable front bucket seats -inc: dual 4-way lumbar support, driver seat memory
- Dakota leather upholstery & door trim -inc: seat surfaces, armrests in center console & doors, headrests for front seats & outer rear seats, gear shift lever boot
- 3-spoke leather-wrapped multi-function steering wheel -inc: controls for audio system, cruise control, Bluetooth wireless communication for hands-free mobile phone
- Remote keyless entry security alarm system -inc: selective unlocking & double-lock feature (programmed at BMW center), remote trunk opening, interior motion detector, panic feature, engine immobilizer
- Dynamic cruise control
- Anti-theft alarm system -inc: keyhead remote operation, interior motion detector
- Dual-zone automatic climate control -inc: separate left/right temperature & air distribution controls, automatic air recirculation
- Power outlet in front passenger footwell, front center console storage compartment, rear center console, trunk
- Additional 12-V pwr sockets (Start of production 9-1-10) - Dark wood interior trim
- Fully finished trunk w/interior & remote trunk release - Fold-up rear seat center armrest
- Floor mats
- Power tilt & telescopic steering wheel -inc: automatic tilt-up for easy entry & exit, steering wheel memory
- Electronic analog speedometer & tachometer
- iDrive system -inc: on-board computer, controller, (8) programmable memory buttons
- Condition-based service display w/additional functions accessible through iDrive system
- Service interval indicator & expanded check control vehicle monitor system
- Power windows -inc: key-off & "one touch" up & down operation both front & rear, anti-trapping feature, opening from remote, closing from exterior lock
- Vehicle & key memory- Integrated 3-button universal garage door opener
- Hard drive-based navigation system -inc: voice feedback, voice command system, real time traffic information, online information services
- Micro-filter ventilation system -inc: replaceable active-charcoal filters
- Rear window defroster- Glove compartment Dual cupholders in front & rear
- Open storage compartments in all doors & front seatback storage
- Auto-dimming interior rearview mirror- Dual front sun visors w/illuminated mirrors
- Front map lights & rear reading lights w/separate controls for the left & right

- Interior courtesy lights w/auto-dimming function- Interior ambiance lighting

Exterior

- 18" x 8.0" star-spoke light alloy wheels (style 330) -inc: P245/45R18 run-flat all-season tires
- 2-way pwr moonroof -inc: remote expanded "one-touch" operation, anti-trapping feature, sliding interior sunshade
- Xenon headlights -inc: dynamic auto-leveling, LED corona headlight-rings, cornering lights
- Adaptive headlight control- Automatic headlight on/off control- Front foglights
- Adaptive brake lights
- Power adjustable heated folding body-color sideview mirrors -inc: mirror memory, automatic tilt-down of passenger side mirror (when car is shifted into reverse gear)
- Auto-dimming exterior sideview mirrors
- Rain-sensing windshield wipers w/adjustable speed

Safety

- 10-way power-adjustable front bucket seats -inc: dual 4-way lumbar support, driver seat memory
- Dakota leather upholstery & door trim -inc: seat surfaces, armrests in center console & doors, headrests for front seats & outer rear seats, gear shift lever boot
- 3-spoke leather-wrapped multi-function steering wheel -inc: controls for audio system, cruise control, Bluetooth wireless communication for hands-free mobile phone
- Remote keyless entry security alarm system -inc: selective unlocking & double-lock feature (programmed at BMW center), remote trunk opening, interior motion detector, panic feature, engine immobilizer
- Dynamic cruise control
- Anti-theft alarm system -inc: keyhead remote operation, interior motion detector
- Dual-zone automatic climate control -inc: separate left/right temperature & air distribution controls, automatic air recirculation
- Power outlet in front passenger footwell, front center console storage compartment, rear center console, trunk
- Additional 12-V pwr sockets (Start of production 9-1-10) - Dark wood interior trim
- Fully finished trunk w/interior & remote trunk release - Fold-up rear seat center armrest
- Floor mats
- Power tilt & telescopic steering wheel -inc: automatic tilt-up for easy entry & exit, steering wheel memory
- Electronic analog speedometer & tachometer
- iDrive system -inc: on-board computer, controller, (8) programmable memory buttons
- Condition-based service display w/additional functions accessible through iDrive system
- Service interval indicator & expanded check control vehicle monitor system
- Power windows -inc: key-off & "one touch" up & down operation both front & rear, anti-trapping feature, opening from remote, closing from exterior lock
- Vehicle & key memory- Integrated 3-button universal garage door opener
- Hard drive-based navigation system -inc: voice feedback, voice command system, real time traffic information, online information services
- Micro-filter ventilation system -inc: replaceable active-charcoal filters
- Rear window defroster- Glove compartment Dual cupholders in front & rear
- Open storage compartments in all doors & front seatback storage
- Auto-dimming interior rearview mirror- Dual front sun visors w/illuminated mirrors
- Front map lights & rear reading lights w/separate controls for the left & right
- Interior courtesy lights w/auto-dimming function- Interior ambiance lighting

Mechanical

- 6-speed manual transmission
- 4.4L 32-valve twin-turbocharged V8 engine -inc: 4-overhead camshafts, piezo direct fuel injection, double-VANOS steplessly variable valve timing
- Direct ignition system w/knock control- Engine start/stop button
- Electronic limited-slip differential- Rear wheel drive
- Electronically controlled engine cooling (map cooling)
- Front multi-link double-wishbone aluminum suspension
- Rear multi-link integral-V aluminum suspension
- Twin-tube gas-pressure shock absorbers
- Vehicle-speed-sensitive variable-assist (Servotronic) variable-ratio power steering
- Brake energy regeneration system

Price excludes \$599.00 processing fee, registration fees and state and local sales taxes. 3% surcharge will be added on all CC charges over \$500.00. Deposits are non-refundable. All our sales are based on first-come-first-serve policy. We work very hard to accurately describe our vehicles through text descriptions and elaborate photos. When you purchase a pre-owned vehicle it is not a new vehicle. Any used vehicle can have normal wear and blemishes. Please read the descriptions thoroughly and view all pictures.

Leesburg Auto Import

View this car on our website at leesburgautoimport.com/6423234

Website: leesburgautoimport.com

Phone: Toll Free: 1-866-249-5348, Local: 703-771-7600

Map: 2 Fairfax St SE, Leesburg, Virginia 20175

