



2017 Cadillac Escalade PLATINUM * 22's * DVD * WHAM BAM THANK YOU MA'AM

Our Price \$0

View this vehicle on our website at texasautowholesale.net

Lone Star Cars, Inc

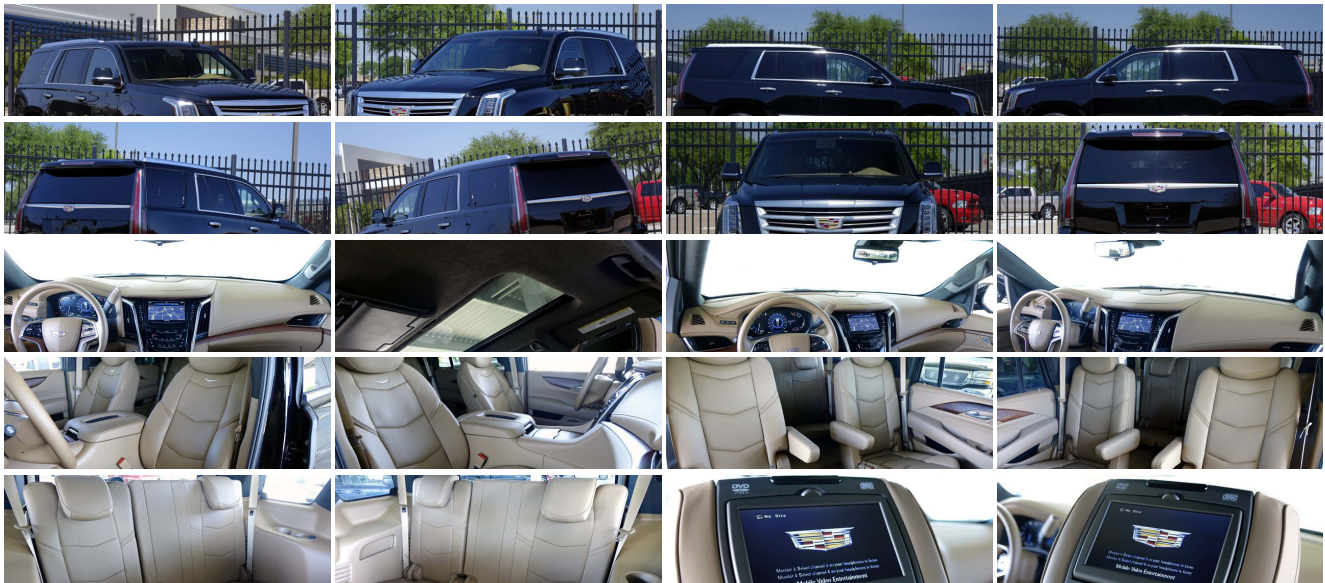
[214.566.1411](tel:214.566.1411)

1200 Commerce Drive , Plano, Texas 75093

[Photos](#)

[Details](#)

[Contact](#)



Specifications:

Year:	2017
VIN:	1GYS3DKJ8HR271242
Make:	Cadillac
Model/Trim:	Escalade PLATINUM * 22's * DVD * WHAM BAM THANK YOU MA'AM
Condition:	Pre-Owned
Body:	SUV
Exterior:	Black Raven
Engine:	ENGINE, 6.2L V8 WITH ACTIVE FUEL MANAGEMENT
Interior:	Tuscan Brown Leather
Transmission:	TRANSMISSION, 8-SPEED AUTOMATIC, 8L90
Mileage:	2,601
Drivetrain:	Rear Wheel Drive

Vehicle Description

2017
Cadillac
Escalade
PLATINUM
Black Raven
Tuscon Brown Interior
3,000 Miles

THIS BABY HAS EVERYTHING!
(and then some)

Triple DVD Screens
Navigation
Sunroof
22-Inch Wheels
Heads-Up Display
Power Running Boards
Surround Vision
Drivers Assistance Package
Heated & Cooled Seats
Heated Steering Wheel

Heated 2nd Row Bucket Seats

Automatic Park Assist

Back-Up Camera

LED Headlamps

Blind Zone Alert

Rear Cross Traffic Alert

Lane Keep Assist

WiFi

Center Console Cooler

Keyless Access

w/ Push Button Start

BOSE Premium Audio

Power 3rd Row Seating

Illuminated Door Handles

Illuminated Running Boards

Power Liftgate

Tow Package

Chrome Exhaust Tip

Clear Bra

ORIGINAL MSRP was \$93,850

This vehicle is exceptional in mechanical and cosmetic aspects. As far as we can tell, there has been no paint or bodywork done on this car. We have both master keyfobs, all of the owners manuals, and the original window sticker. Even the wireless headphones are still in the box.

We we go folks. This is a 2017 Platinum Escalade. Everything about the truck is awesome. The original MSRP was \$93,850. We are offering this Escalade at almost \$20,000 off of the original MSRP. With only 3,000 miles; That is one heck of a deal!

PLEASE NOTE: I have been driving this as my demo for the past couple of days. So please understand it will have a few more mile on it than listed.

Feel Free to Email or Call Blake with ANY Questions

214-566-1411

Installed Options

Interior

- Accents, interior, piano black and chrome finish - Adaptive Remote Start

Option Packages

Factory Installed Packages

- Cargo net, rear
- Climate control, tri-zone automatic with individual climate settings for driver, front passenger and rear passengers
- Console, cooled with covered storage, large and small storage bins, dual cup holders, electronic climate controls and second row heated seat controls (inside console: auxiliary power outlet, two USB ports and auxiliary audio port), 110-volt outlet and auxiliary power outlet on the backside of console
- Console, overhead- Cruise control, adaptive, full-speed range
- Defogger, rear-window electric
- Door locks, power programmable includes lockout protection and delayed locking
- Driver Information Center with programmable personalization features such as door locking and unlocking, a trip computer with trip odometer and individual tire pressure read outs, fuel information such as range, average mpg, gallons used and oil life, and a message center that displays dozens of warning messages such as low fuel and door ajar
- Floor covering, color-keyed carpeting
- Floor mats, color-keyed carpeted first and second row
- Gauge cluster, 12" color, reconfigurable with Driver Information Center
- Head-Up Display, 4-color, reconfigurable
- Lighting, interior, door handle release, door storage, console and footwell
- Lighting, interior, with theater dimming- Lock control, side door, electric
- Memory settings includes two "presets" for driver seat adjuster, outside rearview mirrors, power tilt/telescoping steering column and power-adjustable pedals
- Pedals, power-adjustable for accelerator and brake- Power outlet, 110-volt
- Rear Camera Mirror- Remote Keyless Entry, passive entry, extended range
- Seat adjuster, front passenger 12-way power
- Seats, front bucket with leather seating surfaces, driver and front passenger, 12-way power seat adjusters including 4-way power lumbar control, independently heated driver and front passenger seat cushions and seatbacks (three settings) and 2-position driver memory (Semi-Aniline leather seats, 18-way, including driver-side 3-mode massage setting (front passenger seat includes 2-mode massage setting).)
- Seats, heated and cooled driver and front passenger - Seats, heated second row
- Seats, second row bucket, power configurable (May substitute (ATT) second row 60/40 split-folding bench seats.)
- Seats, third row 60/40 split-bench, power, fold flat - Sensor, inclination
- Sensor, vehicle interior movement will detect movement within the cabin of the vehicle
- Steering column, power tilt and telescoping
- Steering wheel controls, mounted audio and Driver Information Center controls
- Steering wheel, heated
- Steering wheel, power-tilt, color-keyed with wood and leather-wrapped rim, locking
- Theft-deterrent alarm system, content theft alarm, self-powered horn
- Theft-deterrent system, unauthorized entry, engine immobilizer
- Tow/haul mode selector, button located at end of shift lever
- Universal Home Remote includes garage door opener, 3-channel programmable
- Windows, power all doors, comfort open (auto express down via key fob)
- Windows, power, with driver and front passenger Express-Up/Down and rear passengers Express-Down
- Wireless Charging located on the top of the center console (Requires separately purchased adapter.)

Exterior

- Assist steps, power-retractable, running side board with LED lighting
- Door handles, illuminated- Glass, acoustic, laminated, windshield and front door glass
- Glass, deep-tinted (all windows, except light-tinted glass on windshield and driver- and front passenger-side glass)
- Headlamps, IntelliBeam, automatic high beam on/off
- Headlamps, LED high beam/low beam, light pipe- Headlamps, automatic on/off
- Lamps, front cornering- Liftgate, power, hands free open and close, programmable
- Luggage rack, roof-mounted, chrome
- Mirrors, outside heated power-adjustable, power-folding and driver-side auto-dimming, color-keyed with integrated turn signal indicators, ground illumination and programmable to provide curb view when in reverse
- Moldings, bodyside, chrome- Shutters, front active aero- Spare tire lock, hoist shaft
- Sunroof, power, tilt-sliding with express-open/-close and wind deflector (Not included when (A4K) sunroof delete is ordered.)
- Tail lamps, LED illumination- Tire, spare P265/70R17 all-season, blackwall
- Tires, P285/45R22 all-season, blackwall- Wheel, full-size spare, 17" (43.2 cm) steel
- Wheels, 22" x 9" (55.9 cm x 22.9 cm) premium painted with chrome inserts (Upgradeable to (RPT) 22" x 9" 6-spoke chrome multi-featured design wheels or (SMI) 22" x 9" 6-spoke chrome wheels.)
- Windshield, solar absorbing- Wiper, rear intermittent with washer
- Wipers, front intermittent, Rainsense

Safety

- Accents, interior, piano black and chrome finish - Adaptive Remote Start

ENGINE, 6.2L V8 WITH ACTIVE FUEL MANAGEMENT

Spark Ignition Direct Injection (SIDi) and Variable Valve Timing (VVT), includes aluminum block construction (420 hp [313.2 kW] @ 5600 rpm, 460 lb-ft of torque [621 N-m] @ 4100 rpm)

TRANSMISSION, 8-SPEED AUTOMATIC, 8L90

SEATS, SECOND ROW BUCKET, POWER CONFIGURABLE

LICENSE PLATE BRACKET, FRONT, BLACK

\$15

LPO, ALL-WEATHER CARGO MAT

\$85

LPO, ALL-WEATHER FLOOR MATS, 1ST, 2ND AND 3RD ROW

\$225

LPO, INTERIOR PROTECTION PACKAGE

includes (VAV) all-weather floor mats, LPO and (VLI) all-weather cargo mat, LPO

\$250

LPO, POLISHED EXHAUST TIP

\$135

REAR AXLE, 3.23 RATIO

EMISSIONS, FEDERAL REQUIREMENTS

BLACK RAVEN

PLATINUM PREFERRED EQUIPMENT GROUP

Includes Standard Equipment

CADILLAC CUE INFORMATION AND MEDIA CONTROL SYSTEM WITH EMBEDDED NAVIGATION

8" diagonal color information display featuring touch response, haptic feedback, gesture recognition, Natural Voice Recognition, Phone Integration for Apple CarPlay and Android Auto capability for compatible phone, Collection and Teen Driver. Five USB ports, including one in the articulating storage door/bin and auxiliary audio port

TUSCAN BROWN, SEMI-ANILINE FULL LEATHER SEATS

with mini-perforated inserts

SEATS, FRONT BUCKET

with leather seating surfaces, driver and front passenger, 12-way power seat adjusters including 4-way power lumbar control, independently heated driver and front passenger seat cushions and seatbacks (three settings) and 2-position driver memory

WHEELS, 22" X 9" (55.9 CM X 22.9 CM) PREMIUM PAINTED

with chrome inserts

Option Packages Total

\$710

- Cargo net, rear
- Climate control, tri-zone automatic with individual climate settings for driver, front passenger and rear passengers
- Console, cooled with covered storage, large and small storage bins, dual cup holders, electronic climate controls and second row heated seat controls (inside console: auxiliary power outlet, two USB ports and auxiliary audio port), 110-volt outlet and auxiliary power outlet on the backside of console
- Console, overhead- Cruise control, adaptive, full-speed range
- Defogger, rear-window electric
- Door locks, power programmable includes lockout protection and delayed locking
- Driver Information Center with programmable personalization features such as door locking and unlocking, a trip computer with trip odometer and individual tire pressure read outs, fuel information such as range, average mpg, gallons used and oil life, and a message center that displays dozens of warning messages such as low fuel and door ajar
- Floor covering, color-keyed carpeting
- Floor mats, color-keyed carpeted first and second row
- Gauge cluster, 12" color, reconfigurable with Driver Information Center
- Head-Up Display, 4-color, reconfigurable
- Lighting, interior, door handle release, door storage, console and footwell
- Lighting, interior, with theater dimming- Lock control, side door, electric
- Memory settings includes two "presets" for driver seat adjuster, outside rearview mirrors, power tilt/telescoping steering column and power-adjustable pedals
- Pedals, power-adjustable for accelerator and brake- Power outlet, 110-volt
- Rear Camera Mirror- Remote Keyless Entry, passive entry, extended range
- Seat adjuster, front passenger 12-way power
- Seats, front bucket with leather seating surfaces, driver and front passenger, 12-way power seat adjusters including 4-way power lumbar control, independently heated driver and front passenger seat cushions and seatbacks (three settings) and 2-position driver memory (Semi-Aniline leather seats, 18-way, including driver-side 3-mode massage setting (front passenger seat includes 2-mode massage setting).)
- Seats, heated and cooled driver and front passenger - Seats, heated second row
- Seats, second row bucket, power configurable (May substitute (ATT) second row 60/40 split-folding bench seats.)
- Seats, third row 60/40 split-bench, power, fold flat - Sensor, inclination
- Sensor, vehicle interior movement will detect movement within the cabin of the vehicle
- Steering column, power tilt and telescoping
- Steering wheel controls, mounted audio and Driver Information Center controls
- Steering wheel, heated
- Steering wheel, power-tilt, color-keyed with wood and leather-wrapped rim, locking
- Theft-deterrent alarm system, content theft alarm, self-powered horn
- Theft-deterrent system, unauthorized entry, engine immobilizer
- Tow/haul mode selector, button located at end of shift lever
- Universal Home Remote includes garage door opener, 3-channel programmable
- Windows, power all doors, comfort open (auto express down via key fob)
- Windows, power, with driver and front passenger Express-Up/Down and rear passengers Express-Down
- Wireless Charging located on the top of the center console (Requires separately purchased adapter.)

Mechanical

- Air cleaner, high-capacity- Alternator, 170 amps- Automatic load leveling, rear
- Brake, parking, electronic powered- Brakes, 4-wheel antilock, 4-wheel disc
- Brakes, DuraLife rotors- Brakes, VAC power, 17" disc, with Adaptive Cruise Control
- Cooling, external engine oil cooler, heavy-duty
- Cooling, external transmission oil cooler, heavy-duty air-to-oil
- Differential, heavy-duty locking rear
- Engine, 6.2L V8 with Active Fuel Management Spark Ignition Direct Injection (SIDI) and Variable Valve Timing (VVT), includes aluminum block construction (420 hp [313.2 kW] @ 5600 rpm, 460 lb-ft of torque [621 N-m] @ 4100 rpm)
- Fueling system, capless- GVWR, 7100 lbs. (3221 kg) (2WD models only.)
- Keyless start, push button- Rear axle, 3.23 ratio- Rear wheel drive
- Steering, Electronic Power Steering (EPS)
- Suspension, Magnetic Ride Control with selectable sport mode
- Trailering equipment, heavy-duty includes trailering hitch platform, 7-wire harness with independent fused trailering circuits and 7-way sealed connector
- Transmission, 8-speed automatic, 8L90

Texas Auto Wholesale is not a Dealer. This is a website to feature the Wholesale Inventory for Lone Star Cars, Inc. This website is provided as a service to our Clients, Prospective Clients, and the General Consumer who are interested in today’s Automotive Market.

Lone Star Cars, Inc

Lone Star Cars, Inc

View this car on our website at texasautowholesale.net/6416985

Website: texasautowholesale.net

Phone: 214.566.1411

Map: 1200 Commerce Drive, Plano, Texas 75093

