



2015 Cadillac ESCALADE PLATINUM AWD 35K ORIGINAL MILES 1-OWNER

Our Price \$59,900

View this vehicle on our website at njtruckking.com

King of Cars and Trucks

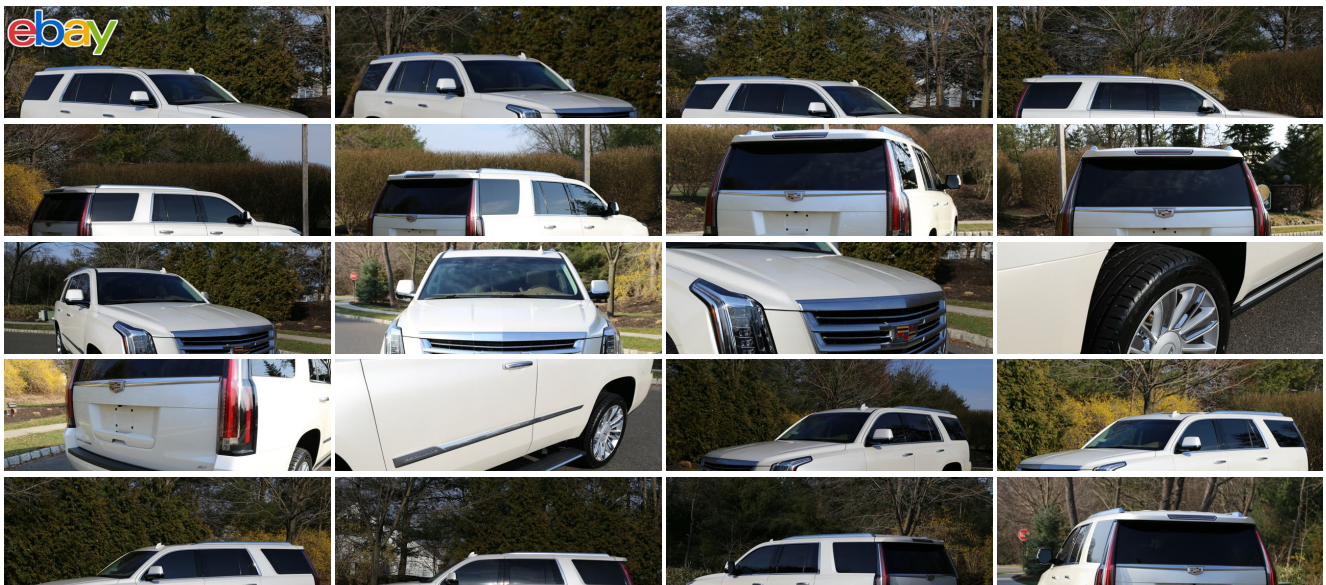
[856-693-3181](tel:856-693-3181)

1229 Broadway , Westville, New Jersey 08093

Photos

Details

Contact



Specifications:

Year:	2015
VIN:	1GYS4PKJ3FR642643
Make:	Cadillac ESCALADE PLATINUM
Model/Trim:	AWD 35K ORIGINAL MILES 1-OWNER
Condition:	Pre-Owned
Body:	SUV
Exterior:	White
Engine:	ENGINE, 6.2L V8 WITH ACTIVE FUEL MANAGEMENT
Interior:	Tan Leather
Mileage:	35,647
Economy:	City 15 / Highway 21

Vehicle Description

~~2015 CADILLAC ESCALADE AWD
~PLATINUM~
6.2L V8
35,647 MILES
WHITE DIAMOND TRI COAT EXTERIOR
LOADED WITH EVERY OPTION
NO FOOD KIDS OR PETS !
NON SMOKER
NO PAINTWORK
BRAND NEW TIRES
ORIGINAL OWNERS MANUALS
2 KEYS
FACTORY FLOOR MATS INCLUDED
PRISTINE CONDITION !
WILL NOT LAST !
BEST OF THE BEST
DON'T SNOOZE AND LOSE BECAUSE THEY ARE HARD TO FIND ESPECIALLY IN THIS CONDITION!
NONE NICER

\$59,900

Installed Options

Interior

- Climate control, tri-zone automatic with individual climate settings for driver, front passenger and rear passengers
- Console, cooled with covered storage, large and small storage bins, dual cup holders, electronic climate controls and second row heated seat controls (inside console: auxiliary power outlet, two USB ports, SD card slot and auxiliary audio port), 110-volt outlet and auxiliary power outlet on the backside of console
- Cruise control, adaptive, full-speed range
- Door locks, power programmable includes lockout protection and delayed locking
- Driver Information Center with programmable personalization features such as door

Option Packages

Factory Installed Packages

ENGINE, 6.2L V8 WITH ACTIVE FUEL MANAGEMENT
Spark Ignition Direct Injection (SIDI) and Variable Valve Timing (VVT), includes aluminum block construction (420 hp [313.2 kW] @ 5600 rpm, 460 lb-ft of torque [621 N-m] @ 4100 rpm)

locking and unlocking, a trip computer with trip odometer and individual tire pressure read outs, fuel information such as range, average mpg, gallons used and oil life, and a message center that displays dozens of warning messages such as low fuel and door ajar

- Floor mats, color-keyed carpeted first and second row - Keyless start, push button
- Lock control, side door, electric
- Memory settings includes two "presets" for driver seat adjuster, outside rearview mirrors, power tilt/telescoping steering column and power-adjustable pedals
- Pedals, power-adjustable for accelerator and brake
- Remote Keyless Entry, passive entry, extended range
- Seat adjuster, front passenger 12-way power
- Seats, front bucket with full Semi-Aniline leather Nappa seats, driver and front passenger, 18-way seat adjusters including 4-way power lumbar control and driver-side 3-mode massage setting (front passenger seat includes 2-mode massage setting), independently heated driver and front passenger seat cushions and seatbacks (three settings) and 2-position driver memory
- Seats, heated and cooled driver and front passenger - Seats, heated second row
- Seats, second row bucket, power configurable (May substitute (ATT) second row 60/40 split-folding bench seats.)
- Seats, third row 60/40 split-bench, power, fold flat
- Sensor, vehicle inclination, will detect vehicle being towed or jacked up
- Sensor, vehicle interior movement, will detect movement within the cabin of the vehicle
- Steering column, power tilt and telescoping
- Steering wheel, power-tilt, color-keyed with wood and leather-wrapped rim, locking
- Theft-Deterrent Package includes (UTR) self-powered horn, (UTV) interior movement sensor and (UTU) vehicle inclination sensors, door lock shields and glass break sensors in rear quarter glass and liftgate window
- Theft-deterrent alarm system, content theft alarm, self-powered horn
- Theft-deterrent system, unauthorized entry, engine immobilizer
- Windows, power all doors, comfort open (auto express down via key fob)
- Windows, power, with driver and front passenger Express-Up/Down and rear passengers Express-Down
- Accents, interior, piano black and chrome finish - Active Noise Cancellation
- Adaptive Remote Start- Cargo net, rear- Defogger, rear-window electric
- Floor covering, color-keyed carpeting
- Gauge cluster, 12" color, reconfigurable with Driver Information Center
- Head-Up Display, 4-color, reconfigurable
- Lighting, interior, door handle release, door storage, console and footwell
- Lighting, interior, with theater dimming
- Mirror, inside rearview auto-dimming, includes OnStar controls- Power outlet, 110-volt
- Steering wheel controls, mounted audio and Driver Information Center controls
- Steering wheel, heated- Tow/haul mode selector, button located at end of shift lever
- Universal Home Remote includes garage door opener, 3-channel programmable
- Wireless Charging located on the top of the center console (Requires separately purchased adapter.)

Exterior

- Assist steps, running side board
- Sunroof, power, tilt-sliding with express-open/-close and wind deflector (Not included when (A4K) sunroof delete is ordered.)
- Tire, spare P265/70R17 all-season, blackwall
- Wheel, full-size spare, 17" (43.2 cm) steel
- Wheels, 22" x 9" (55.9 cm x 22.9 cm) premium painted with chrome inserts (Upgradeable to (RPT) 22" x 9" 6-spoke chrome multi-featured design wheels.)
- Door handles, illuminated- Glass, acoustic, laminated, windshield and front door glass
- Glass, deep-tinted (all windows, except light-tinted glass on windshield and driver- and front passenger-side glass)
- Headlamps, IntelliBeam, automatic high beam on/off
- Headlamps, LED high beam/low beam, light pipe- Headlamps, automatic on/off
- Lamps, front cornering
- Liftgate, body equipment, power, hands free open and close, programmable
- Luggage rack, roof-mounted, chrome
- Mirrors, outside heated power-adjustable, power-folding and driver-side auto-dimming, color-keyed with integrated turn signal indicators, ground illumination and programmable to provide curb view when in reverse
- Moldings, bodyside, chrome- Shutters, front active aero- Spare tire lock, hoist shaft
- Tail lamps, LED illumination- Tires, P285/45R22 all-season, blackwall
- Windshield, solar absorbing- Wiper, rear intermittent with washer
- Wipers, front intermittent, Rainsense

Safety

- Climate control, tri-zone automatic with individual climate settings for driver, front passenger and rear passengers
- Console, cooled with covered storage, large and small storage bins, dual cup holders, electronic climate controls and second row heated seat controls (inside console: auxiliary

power outlet, two USB ports, SD card slot and auxiliary audio port), 110-volt outlet and auxiliary power outlet on the backside of console

- Cruise control, adaptive, full-speed range
- Door locks, power programmable includes lockout protection and delayed locking
- Driver Information Center with programmable personalization features such as door locking and unlocking, a trip computer with trip odometer and individual tire pressure read outs, fuel information such as range, average mpg, gallons used and oil life, and a message center that displays dozens of warning messages such as low fuel and door ajar
- Floor mats, color-keyed carpeted first and second row - Keyless start, push button
- Lock control, side door, electric
- Memory settings includes two "presets" for driver seat adjuster, outside rearview mirrors, power tilt/telescoping steering column and power-adjustable pedals
- Pedals, power-adjustable for accelerator and brake
- Remote Keyless Entry, passive entry, extended range
- Seat adjuster, front passenger 12-way power
- Seats, front bucket with full Semi-Aniline leather Nappa seats, driver and front passenger, 18-way seat adjusters including 4-way power lumbar control and driver-side 3-mode massage setting (front passenger seat includes 2-mode massage setting), independently heated driver and front passenger seat cushions and seatbacks (three settings) and 2-position driver memory
- Seats, heated and cooled driver and front passenger - Seats, heated second row
- Seats, second row bucket, power configurable (May substitute (ATT) second row 60/40 split-folding bench seats.)
- Seats, third row 60/40 split-bench, power, fold flat
- Sensor, vehicle inclination, will detect vehicle being towed or jacked up
- Sensor, vehicle interior movement, will detect movement within the cabin of the vehicle
- Steering column, power tilt and telescoping
- Steering wheel, power-tilt, color-keyed with wood and leather-wrapped rim, locking
- Theft-Deterrent Package includes (UTR) self-powered horn, (UTV) interior movement sensor and (UTU) vehicle inclination sensors, door lock shields and glass break sensors in rear quarter glass and liftgate window
- Theft-deterrent alarm system, content theft alarm, self-powered horn
- Theft-deterrent system, unauthorized entry, engine immobilizer
- Windows, power all doors, comfort open (auto express down via key fob)
- Windows, power, with driver and front passenger Express-Up/Down and rear passengers Express-Down
- Accents, interior, piano black and chrome finish - Active Noise Cancellation
- Adaptive Remote Start- Cargo net, rear- Defogger, rear-window electric
- Floor covering, color-keyed carpeting
- Gauge cluster, 12" color, reconfigurable with Driver Information Center
- Head-Up Display, 4-color, reconfigurable
- Lighting, interior, door handle release, door storage, console and footwell
- Lighting, interior, with theater dimming
- Mirror, inside rearview auto-dimming, includes OnStar controls- Power outlet, 110-volt
- Steering wheel controls, mounted audio and Driver Information Center controls
- Steering wheel, heated- Tow/haul mode selector, button located at end of shift lever
- Universal Home Remote includes garage door opener, 3-channel programmable
- Wireless Charging located on the top of the center console (Requires separately purchased adapter.)

Mechanical

- Brakes, 4-wheel antilock, 4-wheel disc
- Brakes, VAC power, 17" disc, with Adaptive Cruise Control and Automatic Collision Preparation
- Transmission, 8-speed automatic, 8L90- Air cleaner, high-capacity
- Alternator, 170 amps- Automatic load leveling, rear- Brake, parking, electronic powered
- Brakes, DuraLife rotors- Brakes, Hill Start-Assist/Hill hold
- Cooling, external engine oil cooler, heavy-duty
- Cooling, external transmission oil cooler, heavy-duty air-to-oil
- Differential, heavy-duty locking rear
- Engine, 6.2L V8 with Active Fuel Management Spark Ignition Direct Injection (SIDI) and Variable Valve Timing (VVT), includes aluminum block construction (420 hp [313.2 kW] @ 5600 rpm, 460 lb-ft of torque [621 N-m] @ 4100 rpm)
- Four wheel drive- Fueling system, capless
- GVWR, 7300 lbs. (3311 kg) (4WD models only.) - Rear axle, 3.23 ratio
- Steering, Electronic Power Steering (EPS)
- Suspension, Magnetic Ride Control with selectable sport mode
- Trailing equipment, heavy-duty includes trailing hitch platform, 7-wire harness with independent fused trailing circuits and 7-way sealed connector
- Transfer case, active, 2-speed with Neutral for dinghy/flat towing (4WD models only.)

King of Cars and Trucks

View this car on our website at njtruckking.com/6411039

Website: njtruckking.com

Phone: [856-693-3181](tel:856-693-3181)

Map: [1229 Broadway, Westville, New Jersey 08093](#)

