



2018 Ford F-150 NEW 6 INCH LIFT

Our Price \$45,000

Retail Value \$52,324

View this vehicle on our website at f685cdd6-5ee8-4098-8591-c55a3a61574c.autorevo-websites.com

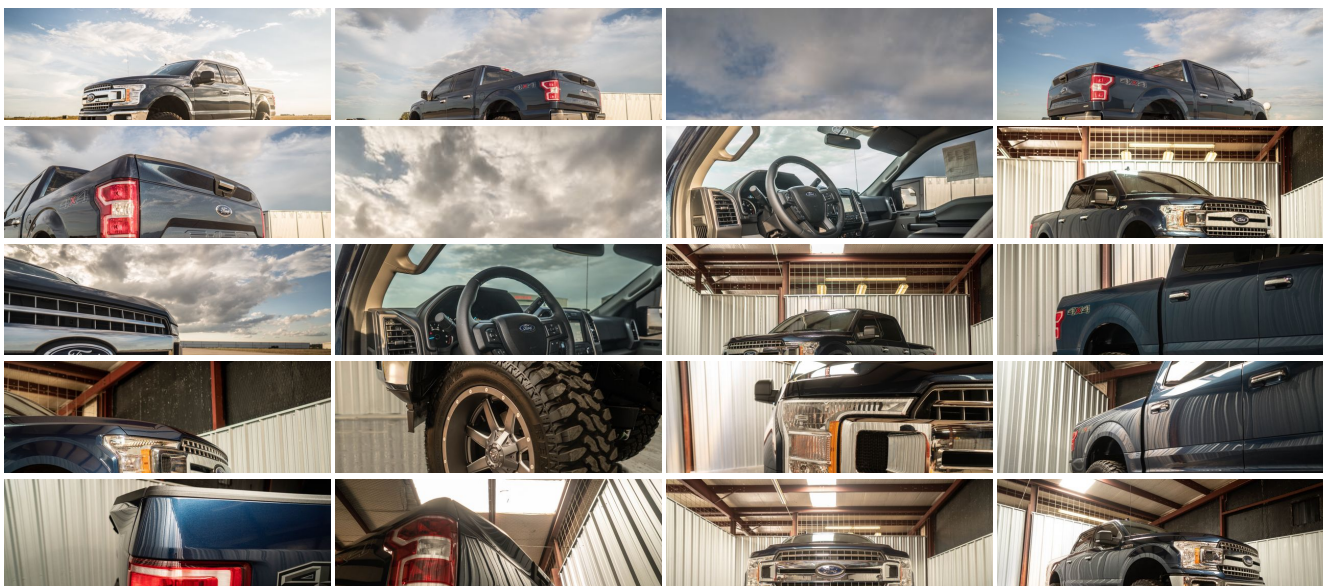
[830-632-5096](tel:830-632-5096)

3185 S Interstate Hwy 35, New Braunfels, TX 78130

Photos

Details

Contact



Specifications:

Year:

2018

VIN:	1FTEW1EG8JKC24221
Make:	Ford
Stock:	o221
Model/Trim:	F-150 NEW 6 INCH LIFT
Condition:	Pre-Owned
Body:	Pickup Truck
Exterior:	Blue Jeans Metallic
Engine:	ENGINE: 3.5L V6 ECOBOOST
Interior:	Medium Earth Gray Cloth
Mileage:	3,300
Drivetrain:	4 Wheel Drive
Economy:	City 17 / Highway 23

Vehicle Description

210 Auto Haus offers only the very best lifted trucks and lifted jeeps . We speacillize in lifted trucks and lifted jeeps in the New Braunfels areaMost of our lifted trucks and jeeps come certified and come with a 3 month or 3000 mile warranty. We also do full customizaion from lift kits , wheel & tire packages and custom stereos. Give us a call at 512-905 5467 or text 512 905 5467 , email 210autohaus@gmail.com, or stop by and visit us at 3185 S Interstate Hwy 35, New Braunfels, TX 78130.

PRACTICALLY BRAND NEW TRUCK

BRAND NEW 7.5 INCH LIFT

BRAND NEW 20 INCH FUEL MAVERICKS WHEELS

BRAND NEW 35 INCH TIRES

FULLY LOADED

TEXT OR CALL 512 905 5467

Vehicle History Report : as Of 09/19/2024

CARFAX

Snapshot

2018 FORD F-150 XLT



No accidents or damage reported to CARFAX



17 Service history records



3 Previous owners



Personal vehicle



Last owned in Louisiana



83,376 Last reported odometer reading



Installed Options

Interior

- Cloth 40/20/40 Front Seat -inc: 4-way adjustable driver/passenger headrests, manual driver/passenger lumbar and armrest w/storage
- 2 Seatback Storage Pockets- 3 12V DC Power Outlets
- 4-Way Driver Seat -inc: Manual Recline and Fore/Aft Movement
- 4-Way Passenger Seat -inc: Manual Recline and Fore/Aft Movement
- 60-40 Folding Split-Bench Front Facing Fold-Up Cushion Rear Seat - Analog Display
- Cruise Control w/Steering Wheel Controls- Day-Night Rearview Mirror
- Delayed Accessory Power- Driver And Passenger Visor Vanity Mirrors
- Fade-To-Off Interior Lighting- Front And Rear Map Lights- Front Cupholder
- Full Carpet Floor Covering -inc: Carpet Front And Rear Floor Mats - Full Cloth Headliner
- Gauges -inc: Speedometer, Odometer, Voltmeter, Oil Pressure, Engine Coolant Temp, Tachometer, Transmission Fluid Temp and Trip Odometer
- Glove Box- HVAC -inc: Underseat Ducts
- Instrument Panel Bin, Dashboard Storage, Driver / Passenger And Rear Door Bins and 1st Row Underseat Storage
- Interior Trim -inc: Metal-Look Instrument Panel Insert, Cabback Insulator and Chrome Interior Accents
- Keypad- Manual Adjustable Rear Head Restraints- Manual Air Conditioning
- Manual Tilt/Telescoping Steering Column- Outside Temp Gauge- Perimeter Alarm
- Pickup Cargo Box Lights
- Power 1st Row Windows w/Driver And Passenger 1-Touch Up/Down
- Power Door Locks w/Autolock Feature- Power Rear Windows- Rear Cupholder
- Remote Keyless Entry w/Integrated Key Transmitter, Illuminated Entry and Panic Button
- Securilock Anti-Theft Ignition (pats) Engine Immobilizer- Urethane Gear Shift Knob

Exterior

- Full-Size Spare Tire Stored Underbody w/Crankdown
- Fully Automatic Aero-Composite Halogen Daytime Running Lights Preference Setting Headlamps w/Delay-Off
- Tailgate/Power Door Lock Included w/Power Door Locks - Tires: P265/70R17 OWL AT

FREE CARFAX Report

See the full CARFAX Report for additional information

*carfax Snapshot is a reflection of available information on the date the report was pulled. carfax is constantly being updated with new information and is subject to change at any time.

- Tailgate/Rear Door Lock Included w/Power Door Locks- Tires: P265/70R17 OWL AT
- Wheels: 17" Silver Painted Aluminum- Aluminum Panels- Black Door Handles
- Black Power Side Mirrors w/Convex Spotter and Manual Folding
- Black Side Windows Trim and Black Front Windshield Trim
- Cargo Lamp w/High Mount Stop Light
- Chrome Front Bumper w/Body-Colored Rub Strip/Fascia Accent and 2 Tow Hooks
- Chrome Grille- Chrome Rear Step Bumper- Clearcoat Paint- Deep Tinted Glass
- Fixed Rear Window- Front Fog Lamps- Perimeter/Approach Lights- Regular Box Style
- Steel Spare Wheel- Tailgate Rear Cargo Access- Variable Intermittent Wipers

Safety

- Cloth 40/20/40 Front Seat -inc: 4-way adjustable driver/passenger headrests, manual driver/passenger lumbar and armrest w/storage
- 2 Seatback Storage Pockets- 3 12V DC Power Outlets
- 4-Way Driver Seat -inc: Manual Recline and Fore/Aft Movement
- 4-Way Passenger Seat -inc: Manual Recline and Fore/Aft Movement
- 60-40 Folding Split-Bench Front Facing Fold-Up Cushion Rear Seat - Analog Display
- Cruise Control w/Steering Wheel Controls- Day-Night Rearview Mirror
- Delayed Accessory Power- Driver And Passenger Visor Vanity Mirrors
- Fade-To-Off Interior Lighting- Front And Rear Map Lights- Front Cupholder
- Full Carpet Floor Covering -inc: Carpet Front And Rear Floor Mats - Full Cloth Headliner
- Gauges -inc: Speedometer, Odometer, Voltmeter, Oil Pressure, Engine Coolant Temp, Tachometer, Transmission Fluid Temp and Trip Odometer
- Glove Box- HVAC -inc: Underseat Ducts
- Instrument Panel Bin, Dashboard Storage, Driver / Passenger And Rear Door Bins and 1st Row Underseat Storage
- Interior Trim -inc: Metal-Look Instrument Panel Insert, Cabback Insulator and Chrome Interior Accents
- Keypad- Manual Adjustable Rear Head Restraints- Manual Air Conditioning
- Manual Tilt/Telescoping Steering Column- Outside Temp Gauge- Perimeter Alarm
- Pickup Cargo Box Lights
- Power 1st Row Windows w/Driver And Passenger 1-Touch Up/Down
- Power Door Locks w/Autolock Feature- Power Rear Windows- Rear Cupholder
- Remote Keyless Entry w/Integrated Key Transmitter, Illuminated Entry and Panic Button
- Securilock Anti-Theft Ignition (pats) Engine Immobilizer- Urethane Gear Shift Knob

Mechanical

- Engine: 3.3L V6 PDFI -inc: auto start-stop technology and flex-fuel capability
- 1680# Maximum Payload- 200 Amp Alternator- 26 Gal. Fuel Tank- 3.73 Axle Ratio
- 4-Wheel Disc Brakes w/4-Wheel ABS, Front And Rear Vented Discs, Brake Assist, Hill Hold Control and Electric Parking Brake
- 70-Amp/Hr 610CCA Maintenance-Free Battery w/Run Down Protection
- Auto Locking Hubs- Double Wishbone Front Suspension w/Coil Springs
- Electric Power-Assist Speed-Sensing Steering- Electronic Transfer Case
- Front Anti-Roll Bar- GVWR: 6,500 lbs Payload Package
- Gas-Pressurized Shock Absorbers- Leaf Rear Suspension w/Leaf Springs
- Part-Time Four-Wheel Drive- Single Stainless Steel Exhaust
- Towing w/Harness and Trailer Sway Control
- Transmission w/SelectShift Sequential Shift Control
- Transmission: Electronic 6-Speed Automatic -inc: selectable drive modes: normal/tow-haul/sport

Option Packages

Factory Installed Packages

ENGINE: 3.5L V6 ECOBOOST -inc: auto start-stop technology, 3.31 Axle Ratio, GVWR: 6,750 lbs Payload Package	\$2,595
---	---------

50 STATE EMISSIONS

8-WAY POWER DRIVER'S SEAT W/POWER LUMBAR	\$350
--	-------

ALL-WEATHER RUBBER FLOOR MATS	\$135
-------------------------------	-------

BACKUP ALARM SYSTEM	\$125
<hr/>	
FRONT LICENSE PLATE BRACKET	
-inc: Standard in states requiring 2 license plates, optional to all others	
<hr/>	
FX4 OFF-ROAD PACKAGE	\$770
-inc: Hill Descent Control, Off-Road Tuned Front Shock Absorbers, Skid Plates (Fleet), fuel tank, transfer case and front differential, 4x4 FX4 Off-Road Bodyside Decal	
<hr/>	
MAX TRAILER TOW PACKAGE	\$1,295
-inc: max towing capability up to 13,200 lbs, and upgraded rear bumper, Higher-Capacity Radiator, Class IV Trailer Hitch Receiver, towing capability up to 5,000 lbs, on 3.3L V6 PFDI engine (99B) and 2.7L EcoBoost engine (99P) or up to 7,000 lbs, on 3.5L EcoBoost engine (99G) and 5.0L V8 engine (995), smart trailer tow connector and 4-pin/7-pin wiring harness, Integrated Trailer Brake Controller, Pro Trailer Backup Assist, Electronic Locking w/3.55 Axle Ratio, Higher-Power Cooling Fans, Upgraded Front Stabilizer Bar, Extended Range 36 Gallon Fuel Tank	
<hr/>	
POWER GLASS HEATED SIDEVIEW MIRRORS	\$190
-inc: manual folding, turn signal and black skull caps, Auto-Dimming Rearview Mirror	
<hr/>	
POWER-SLIDING REAR WINDOW	\$350
-inc: privacy glass, overhead console, dome lamp replacement and front and back map lamps, Rear Window Defroster	
<hr/>	
RADIO: SINGLE-CD/SIRIUSXM W/7 SPEAKERS	\$195
-inc: 7 speakers and a 6-month prepaid subscription, Service is not available in Alaska and Hawaii, Subscriptions to all SiriusXM services are sold by SiriusXM after trial period, If you decide to continue service after your trial, the subscription plan you choose will automatically renew thereafter and you will be charged according to your chosen payment method at then-current rates, Fees and taxes apply, To cancel you must call SiriusXM at 1-866-635-2349, See SiriusXM Customer Agreement for complete terms at www.siriusxm.com , All fees and programming subject to change, Sirius, XM and all related marks and logos are trademarks of Sirius XM Radio Inc	
<hr/>	
REAR WINDOW DEFROSTER	\$220
<hr/>	
REMOTE START SYSTEM	\$195
<hr/>	
REVERSE SENSING SYSTEM	\$275
<hr/>	
SKID PLATES	\$160
<hr/>	
SPRAY-IN BEDLINER (PRE-INSTALLED)	\$495
-inc: Custom Accessory	
<hr/>	
STOWABLE LOADING RAMPS (PRE-INSTALLED)	\$595
-inc: Custom Accessory	
<hr/>	
SYNC 3	\$450
-inc: enhanced voice recognition	

communications and entertainment system, 8" LCD touchscreen in center stack w/swiping and pinch-to-zoom capabilities, pinch-to-zoom capability included when equipped w/available voice activated touchscreen navigation system, AppLink, 911 Assist, Apple CarPlay and Android Auto and 2 smart charging USB ports, Note: SYNC AppLink lets you control some of your favorite compatible mobile apps w/your voice, It is compatible w/select smartphone platforms, Commands may vary by phone and AppLink software

SYNC CONNECT

-inc: Remotely start, lock and unlock vehicle, schedule specific times to remotely start vehicle, locate parked vehicle, check vehicle status all included in service for 5 years from the vehicle sale date as recorded by the dealer, Wi-Fi hotspot connects up to 10 devices includes a trial subscription of 3 months or 3 gigabytes whichever comes first, wireless service plan required after trial subscription ends

\$235

TAILGATE STEP W/TAILGATE LIFT ASSIST

\$375

TRAILER TOW PACKAGE

-inc: Towing capability up to 11,100 lbs, Class IV Trailer Hitch Receiver, towing capability up to 5,000 lbs, on 3.3L V6 PFDI engine (99B) and 2.7L EcoBoost engine (99P) or up to 7,000 lbs, on 3.5L EcoBoost engine (99G) and 5.0L V8 engine (995), smart trailer tow connector and 4-pin/7-pin wiring harness, Pro Trailer Backup Assist, Upgraded Front Stabilizer Bar

\$995

VOICE-ACTIVATED TOUCHSCREEN NAVIGATION

-inc: pinch-to-zoom capability, SiriusXM Traffic and Travel Link, Note: SiriusXM Traffic and Travel Link includes a 5-year prepaid subscription, SiriusXM Traffic and Travel Link service is not available in Alaska or Hawaii, SiriusXM audio and data services each require a subscription sold separately, or as a package, by Sirius XM Radio Inc, If you decide to continue service after your trial, the subscription plan you choose will automatically renew thereafter and you will be charged according to your chosen payment method at then-current rates, Fees and taxes apply, To cancel you must call SiriusXM at 1-866-635-2349, See SiriusXM customer agreement for complete terms at www.siriusxm.com, All fees and programming subject to change, Sirius, XM and all related marks and logos are the trademarks of Sirius XM Radio Inc

\$795

XLT CHROME APPEARANCE PACKAGE

-inc: 2 chrome front tow hooks, Tires: P275/65R18 OWL A/S, Chrome Step Bars, 2-Bar Style Grille w/Chrome 2 Minor Bars, silver painted surround and black background mesh, Chrome Door & Tailgate Handles w/Body-Color Bezel, bezel on side doors and black on tailgate, Wheels: 18" Chrome-Like PVD, Single-Tip Chrome Exhaust

\$1,695

XLT SPECIAL EDITION PACKAGE

-inc: headlamps w/dark housing, unique console top, unique fender and tailgate badging, unique interior finish on instrument panel and doors, unique single-tip exhaust and unique steering wheel, Body-Color Surround Grille w/Black Mesh Insert, Box Side Decal, Wheels: 20" Unique Premium Tarnished Dark Painted, Black Running Boards, Unique Bodyside & Hood Decals, Tires: P275/55R20 BSW AT, 275/65R18 OWL all-season/all-terrain spare tire

\$1,995

3.31 AXLE RATIO

EQUIPMENT GROUP 302A LUXURY

-inc: 4.2" Productivity Screen in Instrument Cluster, Reverse Sensing System, Class IV Trailer Hitch Receiver, towing capability up to 5,000 lbs, on 3.3L V6 PFDI engine (99B) and 2.7L EcoBoost engine (99P) or up to 7,000 lbs, on 3.5L EcoBoost engine (99G) and 5.0L V8 engine (995), smart trailer tow connector and 4-pin/7-pin wiring harness, Rear Window Defroster, XLT Chrome Appearance Package, 2 chrome front tow hooks, Tires: P275/65R18 OWL A/S, Chrome Step Bars, 2-Bar Style Grille w/Chrome 2 Minor Bars, silver painted surround and black background mesh, Chrome Door & Tailgate Handles w/Body-Color Bezel, bezel on side doors and black on tailgate, Wheels: 18" Chrome-Like PVD, Single-Tip Chrome Exhaust, Rear Under-Seat Storage, SYNC 3, enhanced voice recognition communications and entertainment system, 8" LCD touchscreen in center stack w/swiping and pinch-to-zoom capabilities,

\$4,520

BLUE JEANS METALLIC

MEDIUM EARTH GRAY, CLOTH 40/CONSOLE/40 FRONT SEATS

-inc: 4-way adjustable driver/passenger headrests, flow-through console w/column shift and 2nd outlet in console when ordered w/110V/400W outlet (91V)

\$295

WHEELS: 20" CHROME-LIKE PVD

\$1,095

Option Packages Total

\$20,395

210 Auto Haus

210 Auto Haus

View this car on our website at f685cdd6-5ee8-4098-8591-c55a3a61574c.autorevo-websites.com/6407292

Website: f685cdd6-5ee8-4098-8591-c55a3a61574c.autorevo-websites.com

Phone: [830-632-5096](tel:830-632-5096)

Map: [3185 S Interstate Hwy 35, New Braunfels, TX 78130](#)

