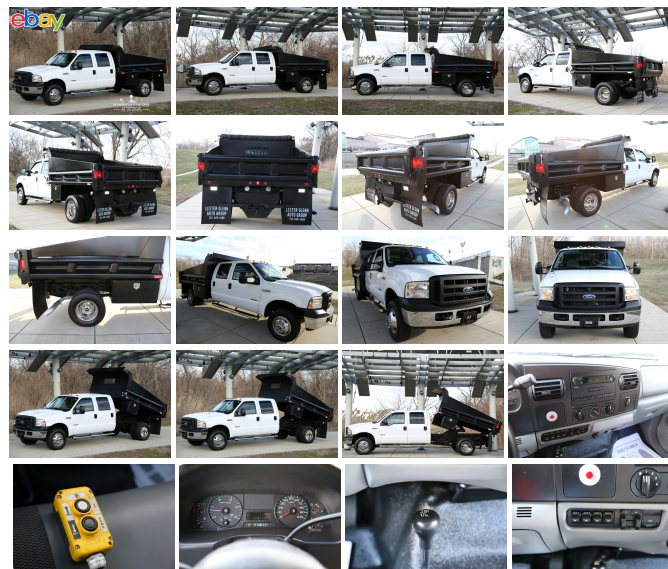


njtruckking.com  
856-693-3181  
1229 Broadway  
Westville, New Jersey  
08093

King of Cars and  
Trucks

## 2007 FORD F350 CREW CAB MASON DUMP TURBO DIESEL 48K ACTUAL MILES 4X4

View this car on our website at [njtruckking.com/6404166/ebrochure](http://njtruckking.com/6404166/ebrochure)



Our Price **\$32,500**

## Specifications:

**Year:** 2007  
**VIN:** 1FDWW37P17EA52890  
**Make:** FORD F350 CREW CAB  
**Model/Trim:** MASON DUMP TURBO DIESEL 48K  
 ACTUAL MILES 4X4  
**Condition:** Pre-Owned  
**Body:** Pickup Truck  
**Exterior:** White  
**Engine:** 6.0L DI V8 POWERSTROKE TURBO-  
 DIESEL ENGINE  
**Interior:** Gray  
**Mileage:** 48,173

~~2007 FORD F350 SUPERDUTY 4X4

~CREW CAB~

6.0L POWERSTROKE TURBO DIESEL

AUTOMATIC TRANSMISSION

( 48,173 ORIGINAL / ACTUAL MILES )

OWNER DRIVEN / OPERATED!

METICULOUSLY MAINTAINED

HEIL MASON DUMP

\*\* W/TARP & DUAL TOOLBOX'S \*\*

BEST COLOR COMBO

ALL THE OPTIONS !

ORIGINAL OWNERS MANUALS

THIS TRUCK IS IN EXCELLENT CONDITION !

YOU WILL NOT FIND A NICER USED DUMP ANYWHERE!

WHY SPEND 80K PLUS ON A NEW TRUCK WHEN YOU CAN OWN  
 THIS ONE FOR UNDER HALF ?!?!

WILL NOT LAST !

BEST OF THE BEST

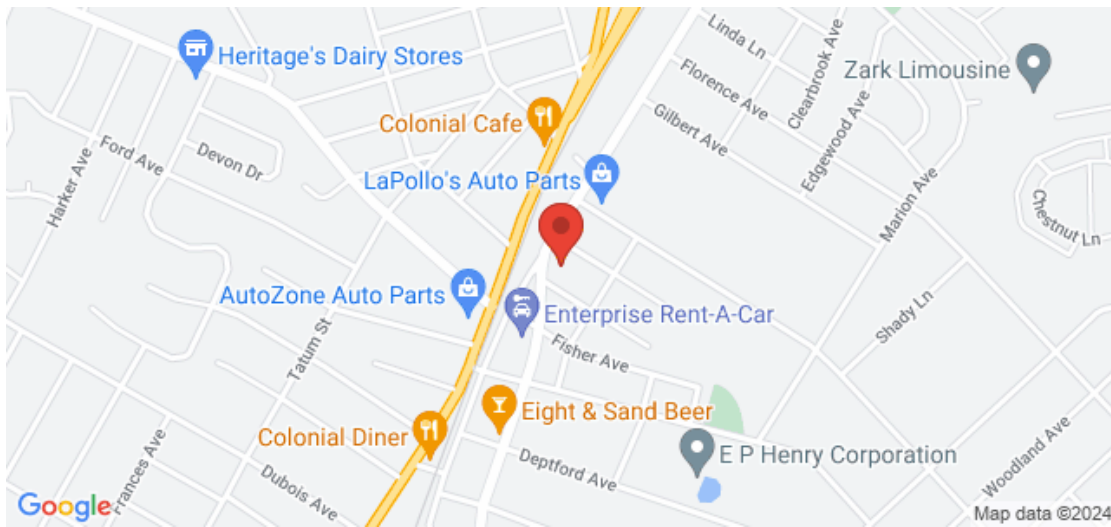
DON'T SNOOZE AND LOSE BECAUSE YOU WILL NOT FIND  
 ANOTHER LIKE IT !

\$32,500

2007 FORD F350 CREW CAB MASON DUMP TURBO DIESEL 48K ACTUAL MILES 4X4

King of Cars and Trucks - 856-693-3181 - View this car on our website at [njtruckking.com/6404166/ebrochure](http://njtruckking.com/6404166/ebrochure)

## Our Location :



2007 FORD F350 CREW CAB MASON DUMP TURBO DIESEL 48K ACTUAL MILES 4X4

King of Cars and Trucks - 856-693-3181 - View this car on our website at [njtruckking.com/6404166/ebrochure](http://njtruckking.com/6404166/ebrochure)

## Installed Options

### Interior

- AM/FM stereo-inc: digital clock, (2) speakers- HD vinyl reclining bench seat
- 11.5" day/night rearview mirror- Auxiliary pwr point
- Black instrument cluster w/black gauges & white graphics - Black vinyl full floor covering
- Black vinyl steering wheel
- Color-coordinated cloth sun visors-inc: LH map strap, RH vanity mirror
- Color-coordinated door trim panel-inc: armrest, grab handle, reflector
- Color-coordinated instrument panel w/glove box, dual cup holders, (4) air registers w/positive shutoff, ashtray & cigar lighter & (4) upfitter switches
- Color-coordinated molded cloth headliner- Color-coordinated scuff plates
- Door activated dome lamp w/delay, I/P switch operation
- Dual color-coordinated coat hooks- Dual front grab handles- Dual map lights
- Front/rear passenger roof ride handles- Inside hood release
- Instrumentation-inc: tachometer, voltmeter, oil pressure/coolant temp/fuel gauges, indicator lights, message center w/odometer & trip meter, engine hour meter, warning messages
- Rear fold-forward bench seat

### Exterior

- Argent painted grille- Argent painted steel front bumper w/grained MIC top cover
- Black door handles- Dual rear access doors
- Manual telescoping trailer tow mirrors w/manual glass & 2-way fold- Roof clearance lights
- Sealed beam halogen headlights- Solar tinted glass
- Variable intermittent windshield wipers

### Safety

- AM/FM stereo-inc: digital clock, (2) speakers- HD vinyl reclining bench seat
- 11.5" day/night rearview mirror- Auxiliary pwr point
- Black instrument cluster w/black gauges & white graphics - Black vinyl full floor covering
- Black vinyl steering wheel
- Color-coordinated cloth sun visors-inc: LH map strap, RH vanity mirror
- Color-coordinated door trim panel-inc: armrest, grab handle, reflector
- Color-coordinated instrument panel w/glove box, dual cup holders, (4) air registers w/positive shutoff, ashtray & cigar lighter & (4) upfitter switches
- Color-coordinated molded cloth headliner- Color-coordinated scuff plates
- Door activated dome lamp w/delay, I/P switch operation
- Dual color-coordinated coat hooks- Dual front grab handles- Dual map lights
- Front/rear passenger roof ride handles- Inside hood release
- Instrumentation-inc: tachometer, voltmeter, oil pressure/coolant temp/fuel gauges, indicator lights, message center w/odometer & trip meter, engine hour meter, warning messages
- Rear fold-forward bench seat

### Mechanical

- (6) LT245/75R17E all-season BSW Continental tires- 4-wheel anti-lock brakes
- 6-speed manual transmission w/OD-inc: PTO provision
- 6.8L 30-valve SOHC EFI Triton V10 engine - Dual rear wheels- (2) front tow hooks
- (6) 17" steel wheels- 115-amp HD alternator- 176" wheelbase- 4.10 axle ratio
- 7-wire trailer tow harness w/relays, blunt cut & labeled- 78 amp/hr battery
- Engine block heater \*STD in AK, CO, IA, ME, MN, MT, ND, SD, WI & WY\*
- Four wheel drive- Front/rear stabilizer bar- HD gas shock absorbers
- Manual transfer case & hubs- Mono-beam front axle w/coil spring suspension
- Pwr 4-wheel disc brakes w/hydro-boost- Pwr steering w/steering damper
- Stationary elevated idle control

## Option Packages

### Factory Installed Packages

<b>6.0L DI V8 POWERSTROKE TURBO-DIESEL ENGINE</b>	
-inc: 110-amp HD alternator, dual 78 amp/hr 750 CCA battery, I/P air filter minder, turbo boost gauge	<b>\$4,950</b>
<hr/>	
<b>Option Packages Total</b>	<b>\$4,950</b>

King of Cars and Trucks

[njtruckking.com](http://njtruckking.com)

856-693-3181

1229 Broadway

Westville, New Jersey 08093

© 2024 AutoRevo - All rights reserved. - Powered by AutoRevo