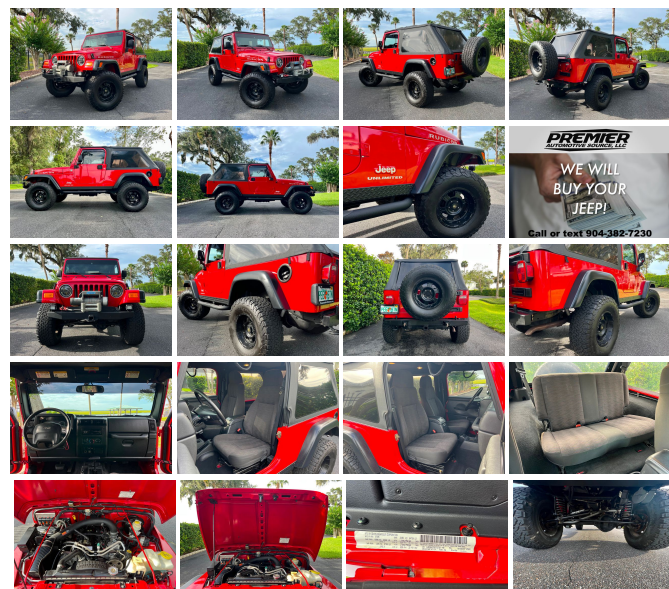


3075 Leon Rd
Jacksonville , FL 32246

2005 Jeep Wrangler Rubicon Unlimited

Nolan Hill

View this car on our website at premierautomotivesource.com/6395683/ebrochure



Our Price **\$0**

Specifications:

Year:	2005
VIN:	1J4FA64S75P372739
Make:	Jeep
Model/Trim:	Wrangler Rubicon Unlimited
Condition:	Pre-Owned
Body:	SUV
Exterior:	Flame Red
Engine:	4.0L SMPI I6 "POWER TECH" ENGINE
Interior:	Dark Slate Gray Cloth
Transmission:	4-SPEED AUTOMATIC TRANSMISSION
Mileage:	108,000
Drivetrain:	4 Wheel Drive
Economy:	City 14 / Highway 18

LIFTED 2005 JEEP WRANGLER RUBICON UNLIMITED LJ

- CLEAN SOUTHERN JEEP -

- FLAME RED -

- LEGENDARY 4.0 INLINE 6 CYL ENGINE -

- AUTOMATIC TRANSMISSION -

- FACTORY DANA 44'S FRONT & REAR -

- FACTORY 4.10 GEARS -

- FACTORY LOCKERS -

- 4" RUBICON EXPRESS SUSPENSION LIFT -

- 9500 LB WINCH -

- UPGRADED LED HEADLIGHTS -

- UPGRADED SPEAKERS & SONY RADIO -

CUSTOM STEEL BUMPER

- CUSTOM STEEL BUMPERS -

- 305/70/16 BFG K02 A/T TIRES -

- PRO-COMP WHEELS -

- CLEAN CARFAX HISTORY -

- TRADES WELCOME -

- CALL OR TEXT NOLAN @ 904-382-7230 -

- WALK AROUND VIDEO AVAILABLE -

Lifted 2005 LJ Jeep Wrangler Rubicon Unlimited, Flame Red, Black interior, Automatic, Bestop Soft Top, 4" Rubicon Express suspension lift, Pro-Comp wheels with 305/70/16 BFG K02 A/T tires. Custom Steel Bumpers, Ramsey 9500 lb. winch. Tinted windows, upgraded radio, speakers, and HID headlights. Factory DANA 44s, factory 4:10 gears, factory locking differentials, Factory four wheel disc brakes, LED fog lights, cold A/C. The legendary 4.0L inline six cylinder runs great, the transmission shifts as it should, and the 4WD engages easily as well as the lockers. Brand new Catalytic Converters and recent service. The Carfax history reports no accidents or issues. This hard to find Flame Red Unlimited Rubicon runs, drives, and looks great! Sale includes one key, front mats, winch controller, and original window sticker.

Call or text Nolan: 904-382-7230. We can also set up a time to do a live video call while we walk-around the vehicle and you can see the vehicle and ask questions. ALL INVENTORY IS STORED INDOORS AND SHOWN BY APPOINTMENT. Trades accepted. All applicable sales tax, title, registration and a \$299 document fees apply.

For financing we recommend LightStream, they offer low-interest financing to people with good credit. LightStream has an easy online application process, and provides a quick response during business hours. This is a confidential process between you and LightStream. For more information go to

LightStream. For more information go to

<http://lightstream.com/?fact=14755&irad=391622&irmp=3040226>

(Please note, we may receive a referral fee from LightStream through this link.)

2005 Jeep Wrangler Rubicon Unlimited

Premier Automotive Source LLC - - View this car on our website at premierautomotivesource.com/6395683/ebrochure

Our Location :



2005 Jeep Wrangler Rubicon Unlimited

Premier Automotive Source LLC - - View this car on our website at premierautomotivesource.com/6395683/ebrochure

Installed Options

Interior

- AM/FM stereo w/CD player-inc: changer control
- Cloth reclining high-back front bucket seats - (7) speakers w/subwoofer- Air conditioning
- Aux 12-volt pwr outlet- Black diamond plate sill guards- Cargo tie down loops
- Courtesy/underhood lamps- Easy access tip/slide driver seat- Fixed long mast antenna
- Folding rear seat- Front/rear seat/wheelhouse/cargo area carpeting
- Full length floor console- Glove box w/lock- Sport bar w/full padding- Tilt steering column
- Tip & slide passenger seat

Exterior

- Folding soft top- Variable intermittent windshield wipers- Deep tint sunscreen glass
- Fog lamps- Fold away exterior mirrors- Front door light tinted windows
- Premium fender flares

Safety

- AM/FM stereo w/CD player-inc: changer control
- Cloth reclining high-back front bucket seats - (7) speakers w/subwoofer- Air conditioning
- Aux 12-volt pwr outlet- Black diamond plate sill guards- Cargo tie down loops
- Courtesy/underhood lamps- Easy access tip/slide driver seat- Fixed long mast antenna
- Folding rear seat- Front/rear seat/wheelhouse/cargo area carpeting
- Full length floor console- Glove box w/lock- Sport bar w/full padding- Tilt steering column
- Tip & slide passenger seat

Mechanical

- (5) 16" x 8" "Moab" aluminum wheels - Full size spare tire w/outside carrier
- HD 6-speed manual transmission- Matching spare wheel- 117-amp alternator
- 19 gallon fuel tank- 4-wheel pwr disc brakes- 4.0L SMPI I6 "Power Tech" engine
- 4.11 axle ratio- 4750# GVWR- 4:1 Rocktrac HD part-time 4WD system
- 600-CCA maintenance free battery- Front/rear stabilizer bars
- HD Dana 44/226MM rear axle- HD Dana M44/216MM front axle
- High pressure gas-charged shock absorbers- LT245/75R16 on/off road BSW tires
- Next generation engine controller- Pwr steering- Skid plates-inc: transfer case, fuel tank
- Tethered gas cap- Tow hooks-inc: (2) front, (1) rear- Tru-lok front/rear differential

Option Packages

Factory Installed Packages

4.0L SMPI I6 "POWER TECH" ENGINE

4-SPEED AUTOMATIC TRANSMISSION

-inc: lock-up torque converter \$825

Option Packages Total

\$825

DEALER POLICIES: Please review all photos carefully and ask questions prior to making an offer if there is anything you are not sure about. We welcome pre-sale inspections. Any descriptions we make of vehicles shall not be construed as any type of warranty. Our pictures are as thorough and precise as we can make them. Please be advised that this is not a brand new vehicle. It is a pre-owned vehicle and has previously been driven, so therefore with respect to the miles there will most likely be average wear and tear, such as minor scratches, minor dings, or small rock chips. We do our best to disclose any substantial blemishes in our photos and descriptions. If our vehicles include manuals, service records or extra sets of keys, it will be shown in the pictures and noted in the description. The advertised mileage is a round number and may vary slightly from the exact mileage due to demo and test drives. Once a vehicle leaves our premises, no refunds, credits, or adjustments, will be issued. All Vehicles are conveyed AS-IS. Dealer neither makes nor implies any warranty on this or any vehicle. Any dispute that may arise shall take place under the laws of the state of Florida, in the state of Florida and all sales are subject to binding Arbitration under the rules of the American Arbitration Association. All applicable sales tax, tag and title fees apply. When we receive a vehicle into our inventory, sometimes the title is being held by a bank or lender as collateral for the previous loan or payoff. Occasionally there is a delay in receiving the title from these lending institutions after payoff of the loan for up to two weeks. While we usually have the titles in our possession, there are instances where we may be waiting for the title to arrive. We guarantee clean titles on our vehicles unless otherwise noted. In some cases we may hold titles until cashiers checks or other funds are cleared or unless other arrangements were agreed upon. Titles will be sent via Fedex for proper tracking. Thank you for your patience and understanding.

Premier Automotive Source LLC

premierautomotivesource.com

3075 Leon Rd

Jacksonville , FL 32246

© 2024 AutoRevo - All rights reserved. - Powered by AutoRevo