



2017 Chevrolet Silverado 2500 Duramax Diesel Every Option LTZ 26x14 specialty forged wheels on 37s!!

Our Price \$73,900

View this vehicle on our website at njtruckking.com

King of Cars and Trucks

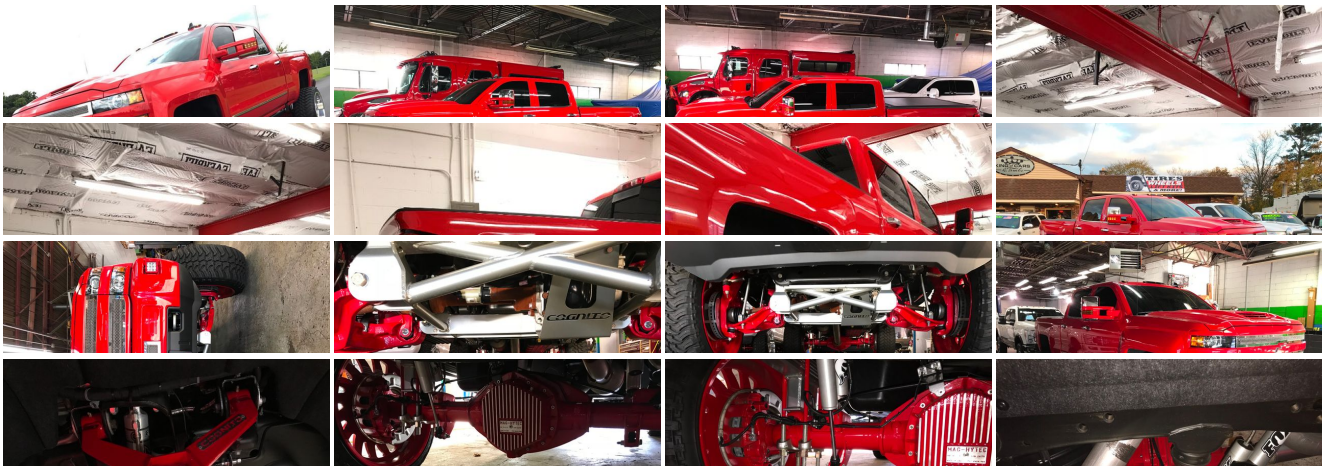
[856-693-3181](tel:856-693-3181)

1229 Broadway , Westville, New Jersey 08093

Photos

Details

Contact





Specifications:

Year:	2017
VIN:	1GC1KWEY8HF118404
Make:	Chevrolet
Model/Trim:	Silverado 2500 Duramax Diesel Every Option LTZ 26x14 specialty forged wheels on 37s!!
Condition:	Pre-Owned
Body:	Pickup Truck
Exterior:	Red Hot
Engine:	ENGINE, DURAMAX 6.6L TURBO DIESEL V8, B20-DIESEL COMPATIBLE
Interior:	Jet Black Leather
Mileage:	1,426

Vehicle Description

Installed Options

Interior

- Cruise control, steering wheel-mounted- Defogger, rear-window electric
- Door locks, power
- Floor covering, color-keyed carpeting with rubberized vinyl floor mats (Double Cab and Crew Cabs include second row floor mats)
- Remote Keyless Entry- Seat trim, Leather-appointed front seats
- Seating, heated driver and front passenger Only available on Crew Cab and Double Cab models.
- Seats, front 40/20/40 leather-appointed split-bench, 3-passenger with (KA1) heated seat cushions and seat backs. Includes 10-way power driver and front passenger seat adjusters, including driver/front passenger power recline, driver/front passenger power lumbar, 2-position driver memory and adjustable outboard head restraints. (Upgradeable to (AN3) front full-featured leather-appointed bucket seats.)
- Steering wheel audio controls
- Steering wheel, leather-wrapped with audio and cruise controls
- Universal Home Remote (Removed when (TRW) provisions for roof mounted lamp or (VYU) Snow Plow Prep Package is ordered.)
- Window, power, rear sliding with rear defogger on Crew Cab or Double Cab models (If (TRW) Provision for cab roof-mounted lamp or (VYU) Snow Plow Prep Package is ordered (A48) will be deleted.)
- Air conditioning, dual-zone automatic climate control Only available on Crew Cab and Double Cab models.
- Assist handle, front passenger and driver on A-pillars
- Driver Information Center, 4.2-inch diagonal color display includes driver personalization, warning messages and vehicle information
- Instrumentation, 6-gauge cluster featuring speedometer, fuel level, engine temperature, tachometer, voltage and oil pressure
- Mirror, inside rearview auto-dimming- Power outlet, 110-volt AC
- Remote vehicle starter system
- Seat, rear 60/40 folding bench (folds up), 3-passenger (includes child seat top tether anchor)
- Steering column, manual Tilt-Wheel and telescoping
- Theft-deterrent system, unauthorized entry
- Visors, driver and front passenger illuminated vanity mirrors
- Windows, power with driver express up and down and express down on all other windows

Exterior

- Mirrors, outside chrome cap, heated power-adjustable, power-folding and driver-side auto-dimming with integrated turn signal indicators and puddle lamps (includes driver's side spotter mirror)
- Tires, LT265/70R18E all-season, blackwall (Upgradeable to (QGM) LT265/70R18E all-terrain, blackwall tires or (QFC) LT265/60R20E all-terrain, blackwall tires.)
- Wheels, 18" (45.7 cm) chromed aluminum includes 18" x 8" (45.7 cm x 20.3 cm) steel spare wheel. Spare not included with (ZW9) pickup box delete unless a spare tire is

Option Packages

Factory Installed Packages

ENGINE, DURAMAX 6.6L TURBO DIESEL V8, B20-DIESEL
COMPATIBLE

(445 hp [332 kW] @ 2800 rpm, 910 lb-ft of
torque [1220 Nm] @ 1600 rpm)

- ordered. (Upgradeable to (Q7R) 20" (50.8 cm) 6-spoke polished aluminum wheels.)
- Bumper, front chrome
- Bumper, rear chrome with bumper CornerSteps (Requires (E63) pickup box.)
- CornerStep, rear bumper (Requires (E63) pickup box.) - Door handles, chrome
- Fog lamps, front, halogen- Glass, deep-tinted- Grille surround, chrome
- Headlamps, halogen projector-beam
- Lamps, cargo area, cab mounted with switch on center switch bank
- Mirror caps, chrome- Moldings, bodyside, chrome- Remote Locking Tailgate
- Tailgate and bed rail protection caps, top
- Tailgate, EZ-Lift and Lower (Deleted with (ZW9) pickup box delete is ordered.)
- Tire carrier lock keyed cylinder lock that utilizes same key as ignition and door (Not included when (ZW9) pickup box delete or (9J4) rear bumper delete is ordered.)
- Wheelhouse liners, rear (Deleted with (ZW9) pickup box delete is ordered.)

Safety

- Cruise control, steering wheel-mounted- Defogger, rear-window electric
- Door locks, power
- Floor covering, color-keyed carpeting with rubberized vinyl floor mats (Double Cab and Crew Cabs include second row floor mats)
- Remote Keyless Entry- Seat trim, Leather-appointed front seats
- Seating, heated driver and front passenger Only available on Crew Cab and Double Cab models.
- Seats, front 40/20/40 leather-appointed split-bench, 3-passenger with (KA1) heated seat cushions and seat backs. Includes 10-way power driver and front passenger seat adjusters, including driver/front passenger power recline, driver/front passenger power lumbar, 2-position driver memory and adjustable outboard head restraints. (Upgradeable to (AN3) front full-featured leather-appointed bucket seats.)
- Steering wheel audio controls
- Steering wheel, leather-wrapped with audio and cruise controls
- Universal Home Remote (Removed when (TRW) provisions for roof mounted lamp or (VYU) Snow Plow Prep Package is ordered.)
- Window, power, rear sliding with rear defogger on Crew Cab or Double Cab models (If (TRW) Provision for cab roof-mounted lamp or (VYU) Snow Plow Prep Package is ordered (A48) will be deleted.)
- Air conditioning, dual-zone automatic climate control Only available on Crew Cab and Double Cab models.
- Assist handle, front passenger and driver on A-pillars
- Driver Information Center, 4.2-inch diagonal color display includes driver personalization, warning messages and vehicle information
- Instrumentation, 6-gauge cluster featuring speedometer, fuel level, engine temperature, tachometer, voltage and oil pressure
- Mirror, inside rearview auto-dimming- Power outlet, 110-volt AC
- Remote vehicle starter system
- Seat, rear 60/40 folding bench (folds up), 3-passenger (includes child seat top tether anchor)
- Steering column, manual Tilt-Wheel and telescoping
- Theft-deterrent system, unauthorized entry
- Visors, driver and front passenger illuminated vanity mirrors
- Windows, power with driver express up and down and express down on all other windows

Mechanical

- Engine, Vortec 6.0L Variable Valve Timing V8 SFI, E85-compatible, FlexFuel capable of running on unleaded or up to 85% ethanol (360 hp [268.4 kW] @ 5400 rpm, 380 lb-ft of torque [515.0 N-m] @ 4200 rpm) (Does not include E85 capability with (ZW9) pickup box delete.)
- Recovery hooks, front, frame-mounted, black (Not available with (PCH) Duramax Plus Package.)
- Steering, Digital Steering Assist (Requires Double Cab models and (L5P) Duramax 6.6L Turbo Diesel V8 engine or Crew Cab models.)
- Steering, Recirculating Ball with smart flow power steering system
- Trailering equipment Trailering hitch platform 2.5" with a 2.0" insert for HD, 7-wire harness with independent fused trailering circuits mated to a 7-way sealed connector to hook up parking lamps, backup lamps, right and left turn signals, an electric brake lead, battery and a ground, The trailer connector also includes the 4-way for use on trailers without brakes - park, brake/turn lamps (Will be deleted if (ZW9) pickup box delete or (9J4) rear bumper delete is ordered.) (Not available with (ZW9) pickup box delete or (9J4) rear bumper delete.)
- Transmission, 6-speed automatic, heavy-duty, electronically controlled with overdrive and tow/haul mode. Includes Cruise Grade Braking and Powertrain Grade Braking (Requires (L96) Vortec 6.0L V8 SFI engine.)
- Air cleaner, high-capacity- Alternator, 150 amps
- Battery, heavy-duty 720 cold-cranking amps/80 Amp-hr, maintenance-free with rundown protection and retained accessory power
- Brakes, 4-wheel antilock, 4-wheel disc with DuraLife brake rotors
- Capless Fuel Fill (Gas engine only. Not available with (ZW9) pickup box delete.)
- Cooling, auxiliary external transmission oil cooler- Cooling, external engine oil cooler

- Differential, heavy-duty locking rear
- Exhaust, aluminized stainless-steel muffler and tailpipe- Four wheel drive
- Frame, fully-boxed, hydroformed front section
- GVWR, 9500 lbs. (4309 kg) (Requires (L96) Vortec 6.0L V8 SFI engine. Not available with CK25943 or CC25903 model.)
- Pickup box- Rear axle, 4.10 ratio (Requires (L96) Vortec 6.0L V8 SFI engine.)
- Suspension Package, Standard includes 51mm twin tube shock absorbers and 33mm front stabilizer bar
- Trailer brake controller, integrated (Standard with (E63) pickup box. Available to order with (ZW9) pickup box delete.)
- Transfer case, electronic shift with rotary dial controls (Requires 4WD models.)

King of Cars and Trucks

King of Cars and Trucks

View this car on our website at njtruckking.com/6375600

Website: njtruckking.com

Phone: 856-693-3181

Map: [1229 Broadway, Westville, New Jersey 08093](#)

